

A woman with long blonde hair in a ponytail, wearing a grey blazer and a blue jacket, is holding a white tablet. She is looking upwards and to the left with a smile. The background is a blurred industrial setting with orange and grey structural elements.

PHILIPS

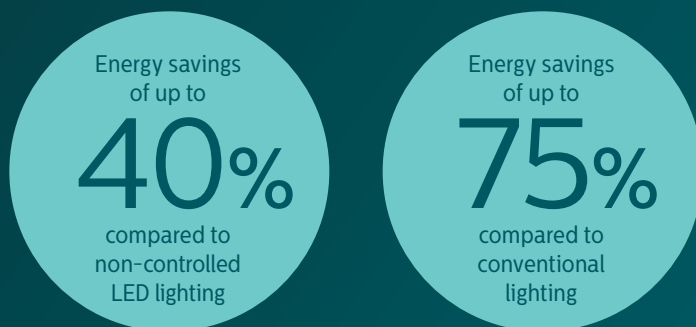
MasterConnect

Master connected lighting

Connected lighting in no time, **anytime**

Connected lighting made simple, scalable, and standardized

Taking the first steps into connected lighting can be challenging and complex, until now. Philips MasterConnect and its growing portfolio of components offer a simple and smart way to add connectivity to your portfolio.



The Philips MasterConnect system empowers you to create connected lighting installations that are simple and scalable, with no hassle during installation and commissioning. Our reliable wireless platform and associated products provide you with the opportunity to tap into all the benefits of connected lighting – **like automation, human-centric lighting and energy efficient solutions**. What's more, Philips MasterConnect combined with LED lighting offers significant savings: up to 40% compared to non-controlled LED lighting and up to 75% compared to conventional lighting. Making it also a more sustainable choice.

Philips MasterConnect
Connected lighting in no time, anytime

Helping to achieve seamless connectivity

Philips MasterConnect is an innovative solution for seamlessly connecting lighting components together to deliver the benefits of lighting automation. It ensures the reliable interoperability of luminaires, drivers, sensors, switches and even gateways.

An easy to use and install lighting network

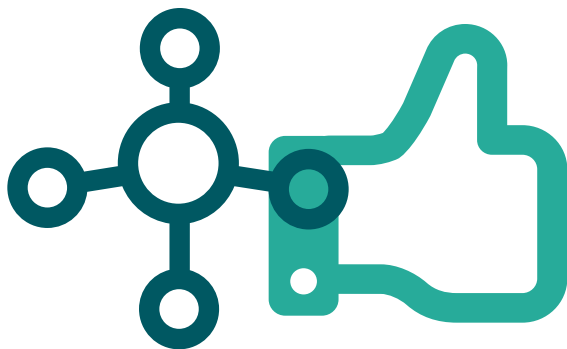
Master Connect is easy to install, add and commission luminaires just by using our mobile app. No specific tooling or extensive training is needed saving time and money by enabling installers to configure a wireless connected network in the field without any IT hassles. Once it's set up, the solution works independently and requires no manual input.

Open standards, more choices

We're committed to pioneering new advances in the connected lighting industry. That's why our solution is based on Open Source standards like BLE and Zigbee. This allows us to work with a wide range of third-party products like wireless switches to extend the Philips MasterConnect system.

Future-ready installations

We are continually adding new features to the Master Connect System and improving the performance of our mobile app over-the air (OTA) updates, allowing you to upgrade the components to deliver the the latest features. Which means you can enhance the system without the need to exchange hardware.



Get more control

using a stand-alone
lighting network with
granular dimming

Master Connect offers an extra degree of control over your lighting system, valuable energy savings and a more comfortable lighting experience.

Solution features

- ✓ **Motion detection**
to switch lights on & off
or adjust up & down with a
Philips EasySense SNS/SNH 21x
sensor in every luminaire.
- ✓ **Touchless dimming control**
per individual, group,
or subgroups for optimal
visual comfort.
- ✓ **Maximum energy savings**
with motion detection
and daylight harvesting.

Applications

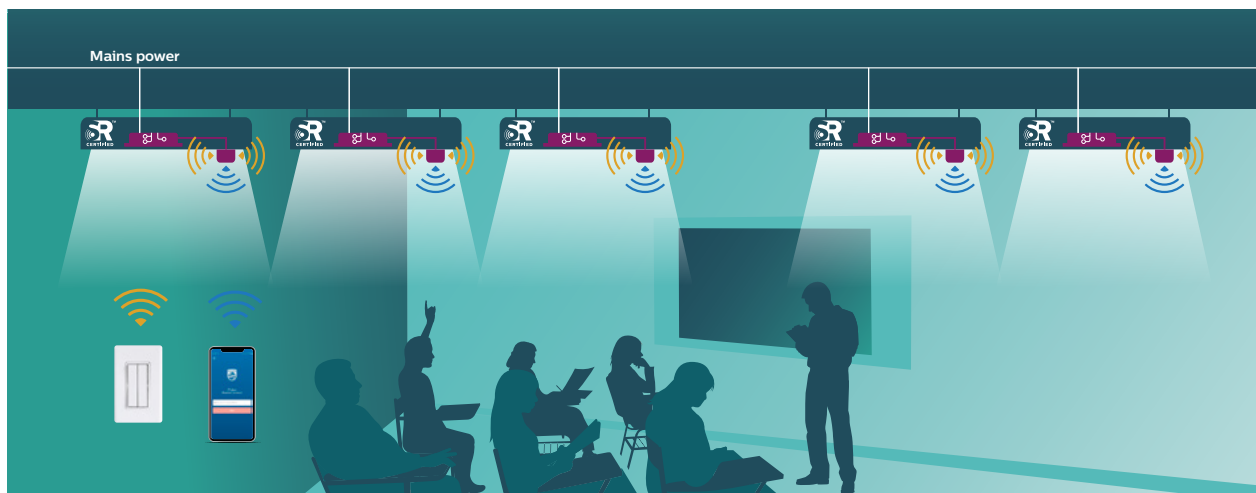
- ✓ **Offices**
(corridors, conference rooms),
- ✓ **Schools**
(classrooms, cafeteria, restrooms)
- ✓ **Hospitals**
(wards, reception)
- ✓ **Retail**
(displays, stock rooms)
- ✓ **Industrial**
(warehouses, manufacturing floors)



Access energy reports
via the mobile app

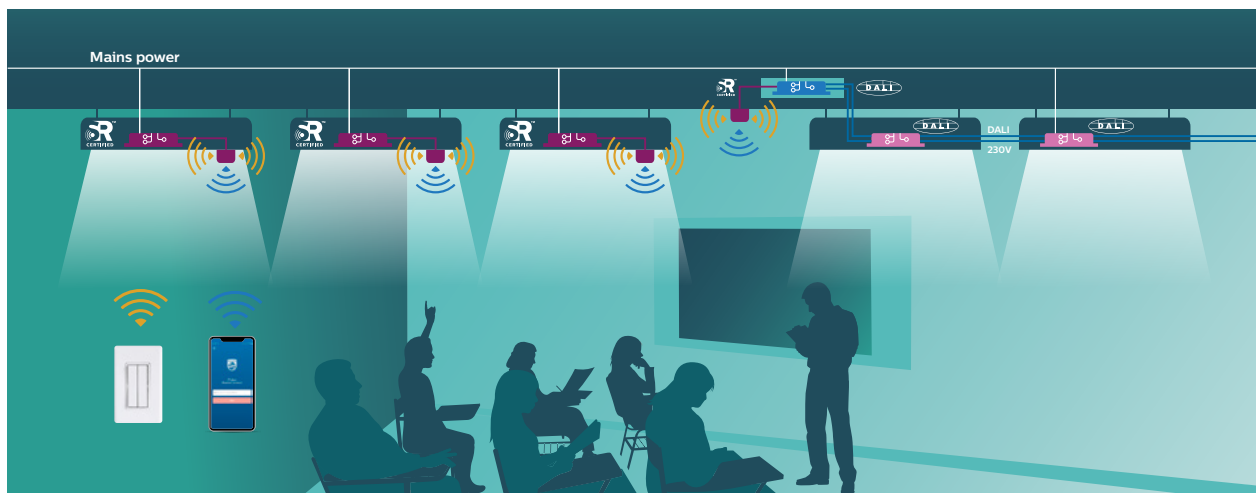
Want a room based control with occupancy sensing and daylight harvesting?

Just add EasySense SNS21x sensors to every SR-powered luminaire in your network.



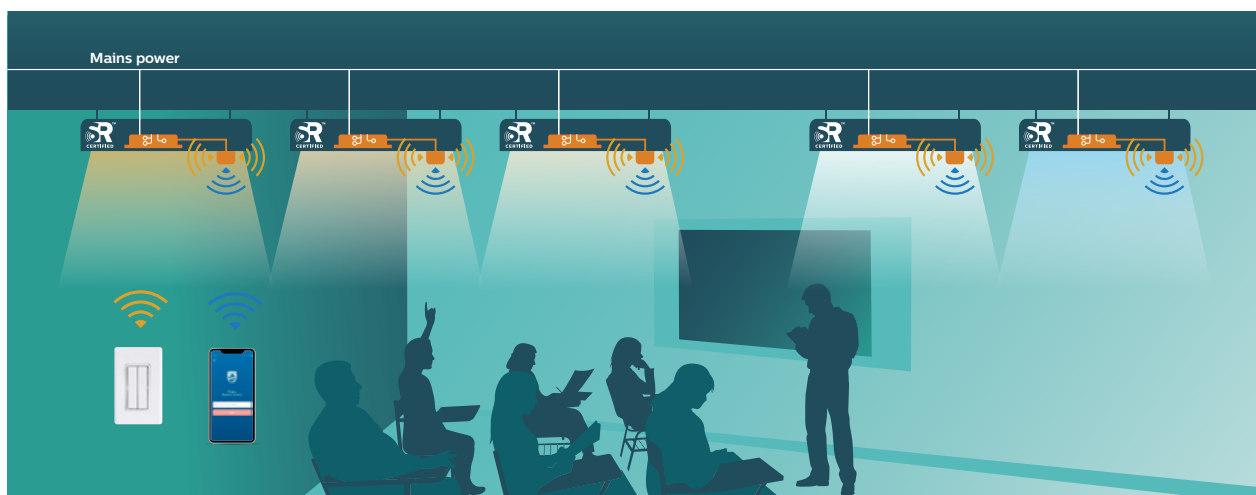
Using existing wired 0-10V luminaires?

Simple. Add them into the Network using the SR bridge.



Need more ambiance?

Create a tunable white system using a Xitanium SR FlexTune driver & EasySense SNS21x sensor.



- Xitanium SR driver
- Xitanium SR bridge
- Xitanium SR FlexTune
- Any 0-10V driver
- Zigbee
- Bluetooth
- Sensor/wireless node

Portfolio

Sensors

For more flexibility, our latest firmware makes it possible to use Philips MasterConnect in larger group sizes (up to 100 luminaires). Also, our sensors are pre-configured with basic functionality to work out-of-the-box. This reduces the time between installing and commissioning connected luminaires using the Philips MasterConnect app.



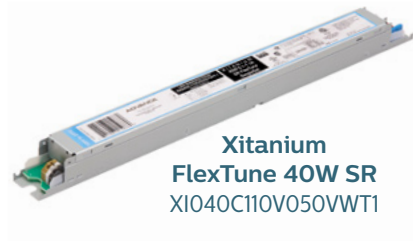
EasySense*
SNS21x MC



EasySense*
SNH21x MC

Compatible SR Drivers

The EasySense SNS21x MC and SNH21x MC sensors are compatible with Xitanium SR drivers. To find the SR driver that fits your application needs and for product specifications, please visit us online at www.Signify.com/xitaniumsr.



**Xitanium
FlexTune 40W SR**
XI040C110V050VVT1



**Xitanium
95W SR**
XI095C275V054VSF2



**Xitanium
20W SR**
XI020C056V054VPT1



**Xitanium
40W SR**
XI040C110V054VPT2



**Xitanium
75W SR**
XI075C200V054VPT3

Switches



**Philips
SWS200**
Zigbee Green
Power Switch
Scene Selector



**Illumra
ZBT-S1AWH**
Zigbee Self-Powered
Single Rocker Wireless
Light Switch



**Illumra
ZBT-S2AWH**
Zigbee Self-Powered
Dual Rocker Wireless
Light Switch



**Philips Hue
FOH-DSWH**
Battery-free &
Wireless Dimmer
Light Switch

SR Bridges



SRB-BS2



SRB-LD2



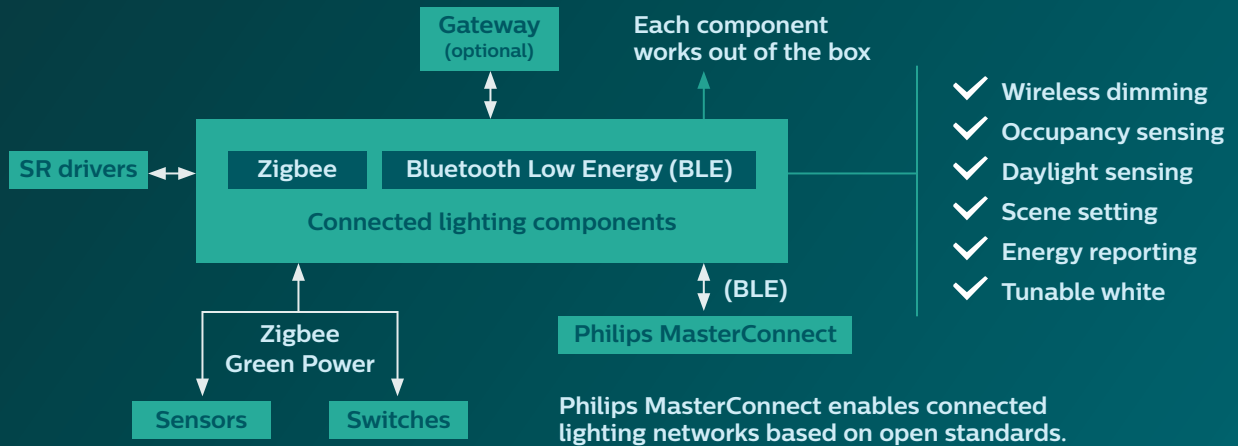
SMB-50



CMP

* SNS21xMC, where the "x" refers to our latest version of the EasySense sensor.
Contact your sales representation to obtain the latest model number of our EasySense sensor.

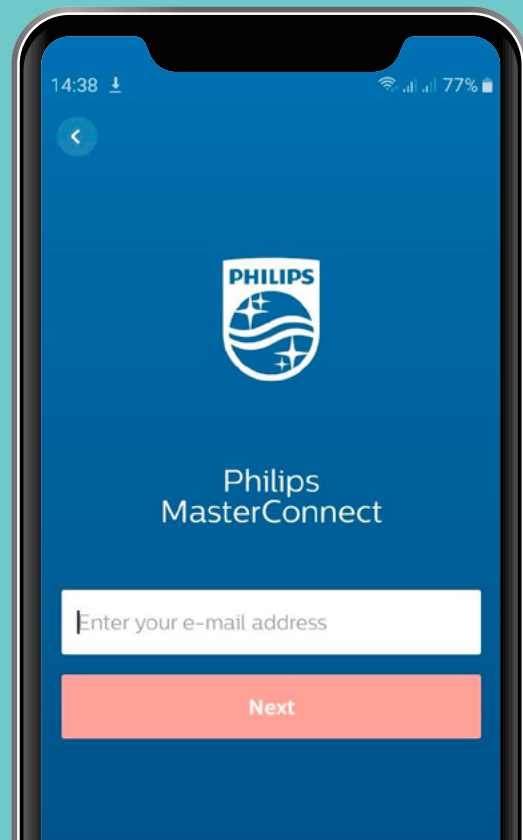
All open standards within one connected lighting network



New features, new name and new applications

Download the app today. The Philips MasterConnect mobile app has been rebranded from the previously named Philips field app. Its new name also comes with new features and new applications.

Take the next steps toward simple, scalable, standardized connected lighting. To learn more about lighting components that are compatible with Philips MasterConnect in a wide range of applications, visit us online at: www.philips.com/masterconnectsystem or download the Philips MasterConnect mobile app and get connected now.





© 2023 Signify Holding. All rights reserved. The information provided herein is subject to change, without notice. Signify does not give any representation or warranty as to the accuracy or completeness of the information included herein and shall not be liable for any action in reliance thereon. The information presented in this document is not intended as any commercial offer and does not form part of any quotation or contract, unless otherwise agreed by Signify.

PLt-2320BR 08/23 philips.com/LEDlamps

Signify North America Corporation
400 Crossing Blvd, Suite 600
Bridgewater, NJ 08807
Telephone: 855-486-2216

Signify Canada Ltd.
281 Hillmount Road,
Markham, ON, Canada L6C 2S3
Telephone: 800-668-9008

Philips and the Philips Shield Emblem are registered trademarks of Koninklijke Philips N.V. All other trademarks are owned by Signify Holding or their respective owners.