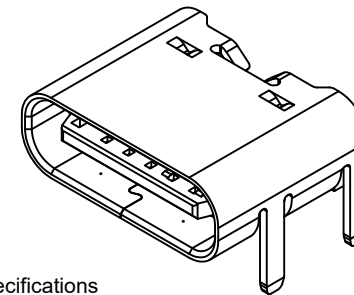


| Pin | Signal | Mating Sequence |
|-------|--------|-----------------|
| A5 | CC1 | Second |
| A9 | Vbus | First |
| A12 | GND | First |
| B5 | CC2 | Second |
| B9 | Vbus | First |
| B12 | GND | First |
| SHELL | GND | |



Specifications

Material

Insulator: LCP, UL 94V-0, Black
 Contact: Copper Alloy
 Shell: Stainless Steel
 Middle plate: Stainless Steel

Plating

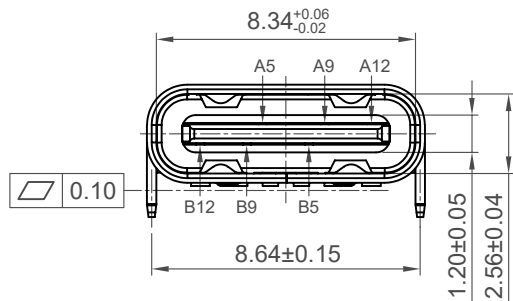
Contact: Gold Flash All Over
 Shell: 50µ" min. Nickel
 Middle plate: Clear

Electrical

Current Rating: 3.00A collectively for Vbus pins
 4.25A collectively for GND pins
 1.25A for A5/B5 pin
 Voltage Rating: 48V DC
 Contact Resistance: 40mΩ max initial.
 50mΩ max after test
 Dielectric Withstanding Voltage: 100V AC
 Insulation Resistance 100MΩ min

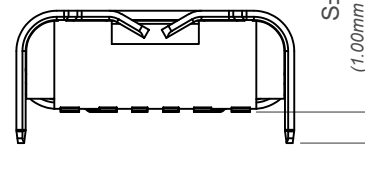
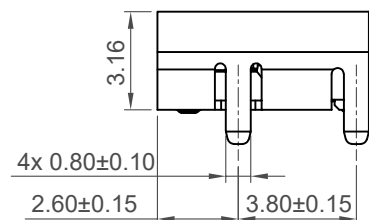
Mechanical & Environmental

Operating Temperature: -30°C to +85°C
 Mating Force: 5 to 20 N.
 Unmated Force: 6 to 20 N after test
 Durability: 20,000 cycles

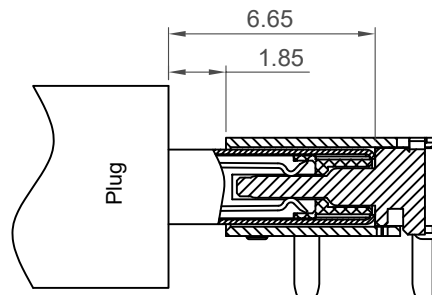
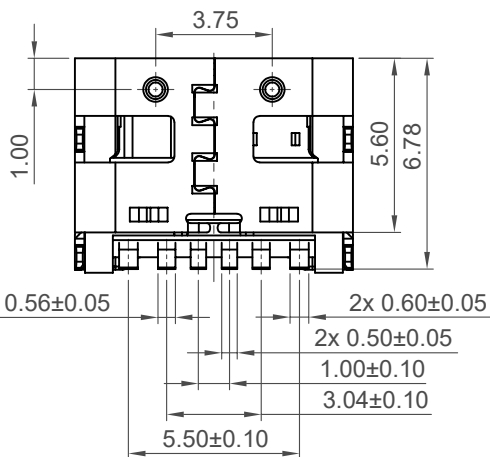


Recommended PCB Layout
 Thickness 1.00±0.10mm
 Tolerance: ±0.05mm

▨ Solder Area □ Component Outline

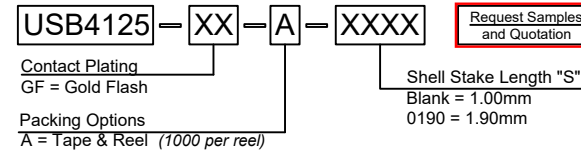


S±0.25
 (1.00mm stake shown)



Plug and Receptacle Mating View

Ordering Grid



| | | | |
|--------------|-----------------|--|-------------|
| Part Number | | Product Description | |
| USB4125 | | Type C Receptacle, Horizontal, SMT, For Power Charging Only | |
| Drawing Date | | 28th September 2020 | |
| By | KY | Tolerances (Except as Noted) | Units: |
| Detail | Drawing Release | Length X.X ± 0.30 X.XX ± 0.25 X.XXX ± 0.10 | Metric (mm) |
| Revision | A4 | Angle | - |
| Date | 02/09/24 | 3rd Angle Projection | |

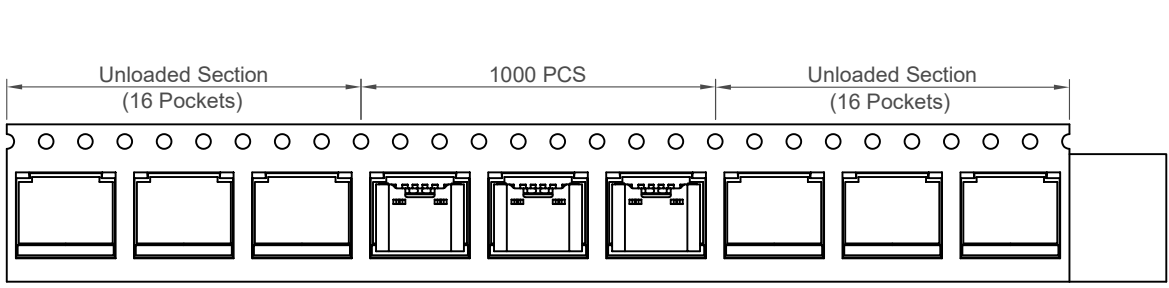


This drawing is confidential and copyright of Global Connector Technology, Ltd (GCT). This drawing must not be copied or disclosed without written consent. E & OE

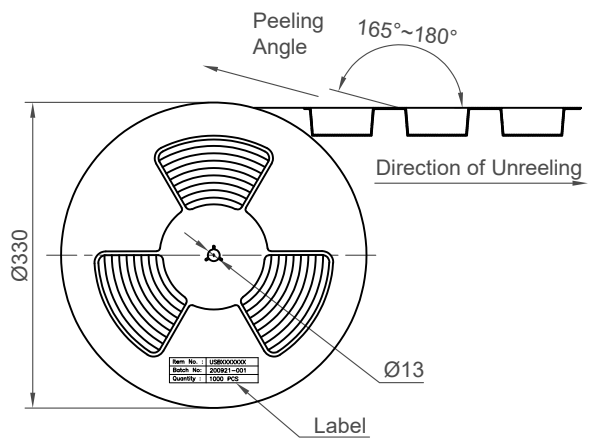


Not to Scale Drawn By CC Sheet No. 1/2

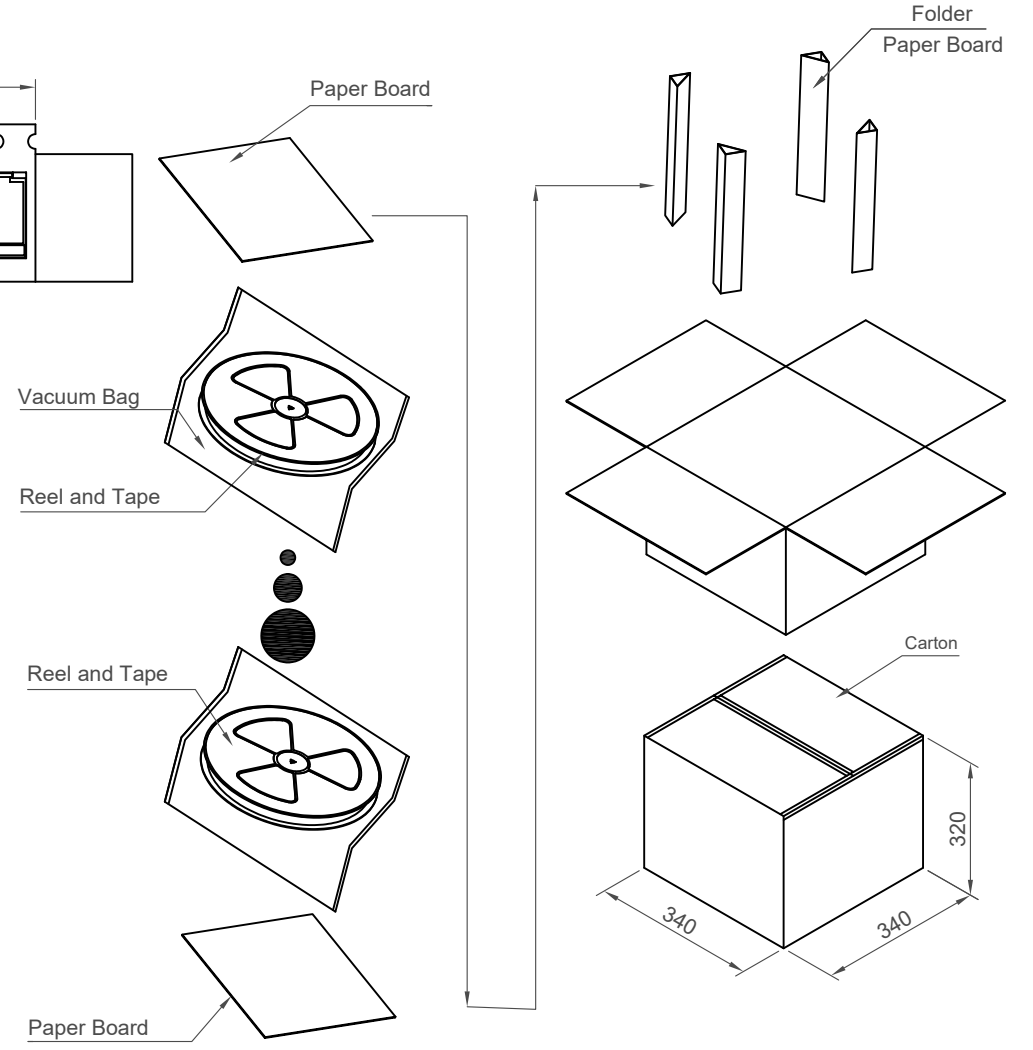
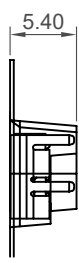
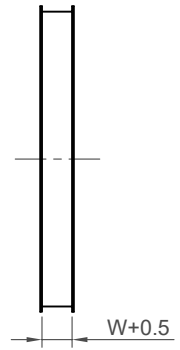
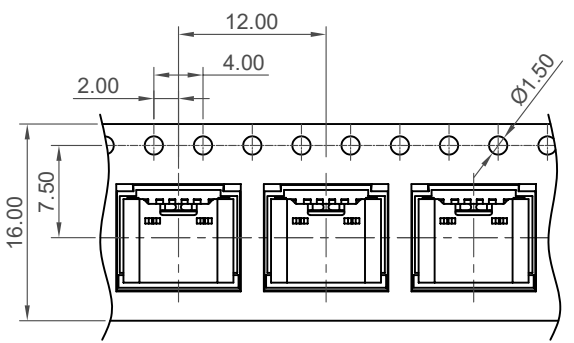
H
G
F
E
D
C
B
A



Direction of Unreeling →



Direction of Unreeling →



| Pcs / Reel | Reels / Carton | Total Quantity |
|------------|----------------|----------------|
| 1000 | 13 | 13,000 pcs |

| | | | |
|--------------|-----------------|--|----------------------|
| Part Number | | Product Description | |
| USB4125 | | Type C Receptacle, Horizontal, SMT, For Power Charging Only | |
| Drawing Date | | 28th September 2020 | |
| By | KY | Tolerances (Except as Noted) | Units: |
| Detail | Drawing Release | Length | Metric (mm) |
| Revision | A4 | Angle | 3rd Angle Projection |
| Date | 02/09/24 | | |



This drawing is confidential and copyright of Global Connector Technology, Ltd (GCT). This drawing must not be copied or disclosed without written consent. E & OE



Not to Scale
Drawn By CC
Sheet No. 2/2

1 2 3 4 5 6 7 8