



QR18: PRODUCT CHANGE NOTICE

This document shall be issued upon changes to the design of a GCT Product.
It shall be distributed to all Interested Parties and shall be made available on the GCT Website.

Date of Notice: (DD/MM/YYYY) **26/04/2023** Product Change Notice Number: **USB4085 B PCN 20230426**

Product Identifier: **USB4085-XX-A**

Drawing Revision Letter: **B** Effective from date code/batch code: **230401-XXX***

Description of Changes: with diagrams if relevant

1. Current rating is now 5A (was 3A).
2. Voltage rating is now 48Vdc (was 20Vdc).
3. Solder tails plating is now Gold Flash (was Matte Tin).
4. Durability is now 20,000 mating cycles (was 10,000).
5. Slight difference in internal construction.

Reason for Change:

Retooled to offer superior performance.

Anticipated Impact on Form, Fit, Function or Reliability:

None: There is no impact on form, fit, function or reliability.

Required Inventory Action:

None.

Transition from Revision A to Revision B:

This will be a running change from Revision A4 to Revision B. To facilitate this running change GCT will undertake the following activities to minimise the impacts of the change on our customers:

- Provide free-of-charge verification samples of Revision B parts. Please contact your Account Manager to access these samples.
- Continue to supply Revision A4 until 10th May 2023
- Switch supply over to Revision B from 11th May 2023
- GCT Account Managers will contact all customers to discuss impacts of this switchover, and approaches to mitigate these impacts, such as:
 - Where customers require extended period to verify Revision B samples, GCT will continue to supply Revision A4 after 10th May 2023 for a limited period and while existing stock of Revision A4 are available.

****Please note that Revision A4 will have batch code no later than 31st March 2023 (230331-XXX). Revision B will have batch code no earlier than 1st April 2023 (230401-XXX). Additionally, and at least until the end of Q3 2023, all cartons of Revision B shall have affixed a label to indicate that the parts contained are to Revision B.***

Contact Information(s): (if blank, please visit www.gct.co or use the regional details below).

GCT Europe (UK) +44 (0)1707 321122 sales@gct-europe.com	GCT Americas (USA) +1 978 208 1618 sales@gct-americas.com	GCT Asia-Pacific (HK) +852 2578 9030 sales@gct-apac.com

QR18 Version 1.2

Prepared by: MJC

Reviewed by: ST

Approved by: ST

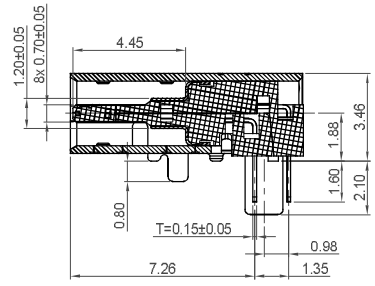
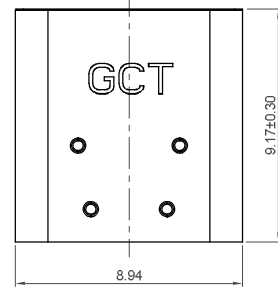
Prepared: 06/04/2017

Reviewed: 06/04/2017

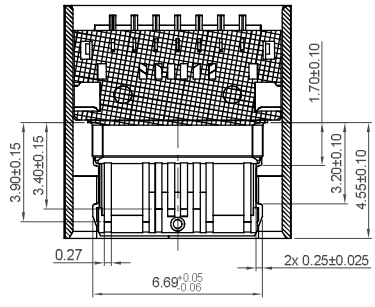
Approved: 06/04/2017

This advisory relates to the following GCT part:

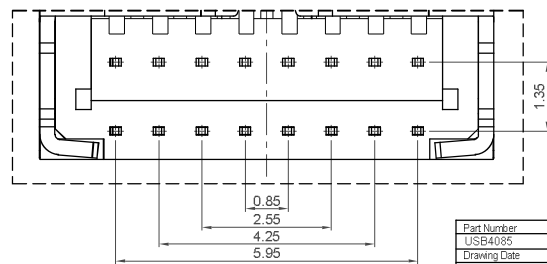
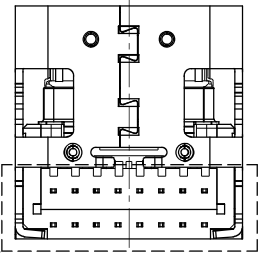
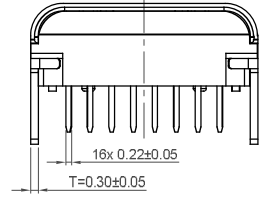
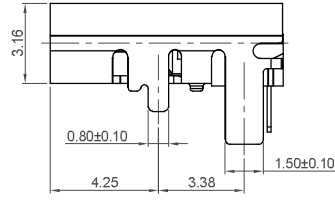
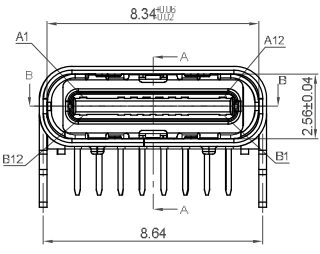
USB4085-GF-A



Section A-A



Section B-B



Detail C
Scale 2:1

Pin	Signal	Mating Sequence	Pin	Signal	Mating Sequence
A1	GND	First	B12	GND	First
A4	Vbus	First	B9	Vbus	First
A5	CC1	Second	B8	SBU2	Second
A6	Dp1	Second	B7	Dn2	Second
A7	Dn1	Second	B6	Dp2	Second
A8	SBU1	Second	B5	CC2	Second
A9	Vbus	First	B4	Vbus	First
A12	GND	First	B1	GND	First
SHELL	GND		SHELL	GND	

Specifications

Material
 Insulator: LCP, UL 94V-0, Black
 Contact: Copper Alloy (T=0.15mm)
 Shell: Stainless steel (T=0.30mm)
 Inner Ground Cover Shell: Stainless Steel (T=0.10mm)
 Mid-Plate: Stainless Steel (T=0.15mm)

Plating

Contact:
 Contact Area: See Ordering Grid
 Solder Tails: Gold Flash
 Underplating: 50µ" min. Nickel
 Shell: 50µ" min. Nickel
 Inner Ground Cover Shell & Mid-Plate: Clear

Electrical

Current Rating: 5.00A collectively for Vbus pins
 6.25A collectively for GND pins
 1.25A for A5/B5 pin
 0.25A per pin for all other pins
Voltage Rating: 48V DC
Power Rating: 240W
Contact Resistance: 40mΩ max initial.
 50mΩ max after test
Dielectric Withstanding Voltage: 100V AC
Insulation Resistance: 100MΩ min

Mechanical & Environmental

Operating Temperature: -40°C to 85°C
Mating Force: 5 to 20 N
Unmated Force: 6 to 20 N after test
Durability: 20,000 cycles

Ordering Grid

USB4085 - XX - A Request Samples and Quotation

Contact Plating:
 GF = Gold Flash (Standard)
 30 = 30µ" Gold

Packing Options:
 A = Tape & Reel (700 per reel)

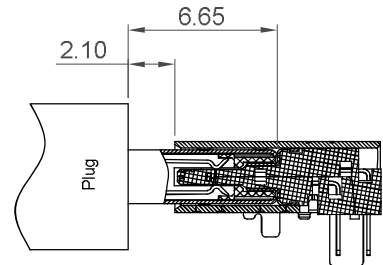
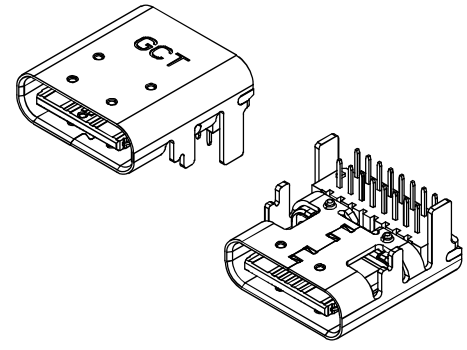
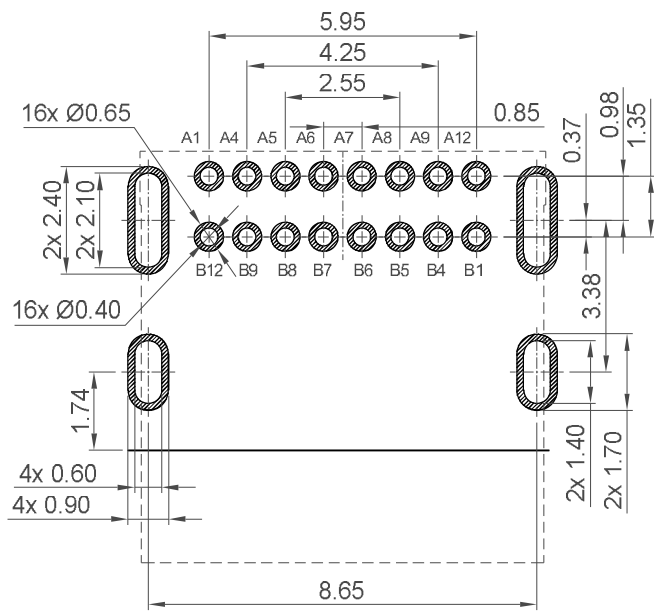
Part Number		Product Description	
USB4085		USB 2.0 Type C Receptacle	
Drawing Date		Dip Type, PCB Top Mount	
9th April 2018			
By	CC	Tolerances/Except as noted	Units:
Detail	USB4085 B PCN	X ± 0.50 X.X ± 0.03 X.XX ± 0.20 X.XXX ± 0.10	Metric (mm)
Revision	B		± 2°
Date	28/03/23		Single Precision



The drawing is confidential and copyright of Global Connector Technology, Ltd (GCT). This drawing must not be copied or disclosed without written consent. E & OE





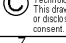
Not to Scale Drawn By CC Sheet No. 1/3

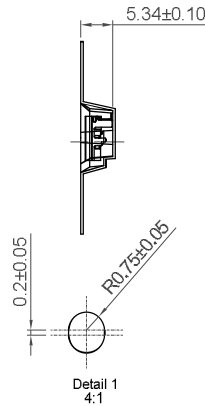
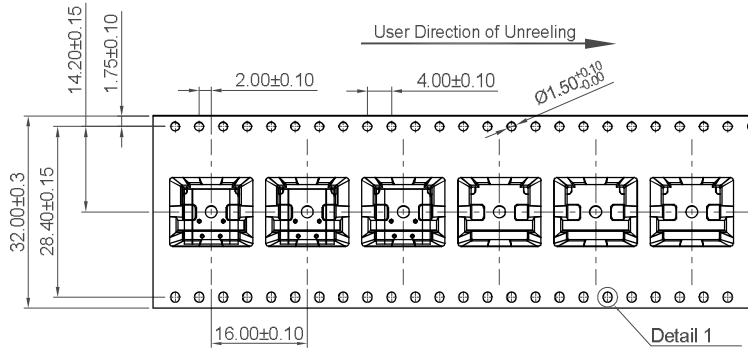
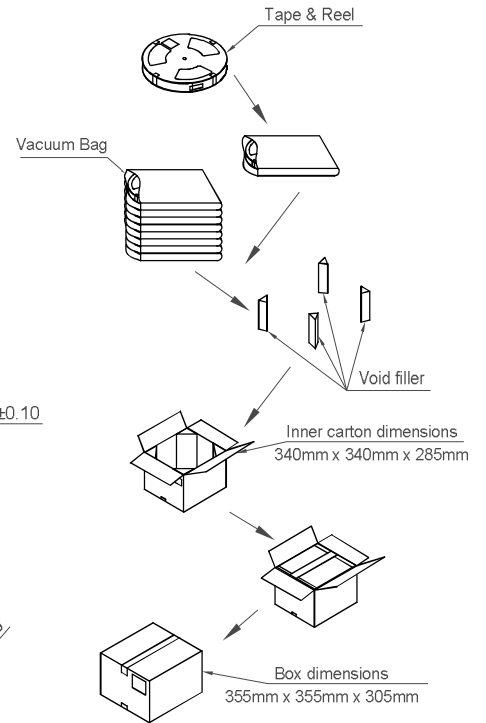
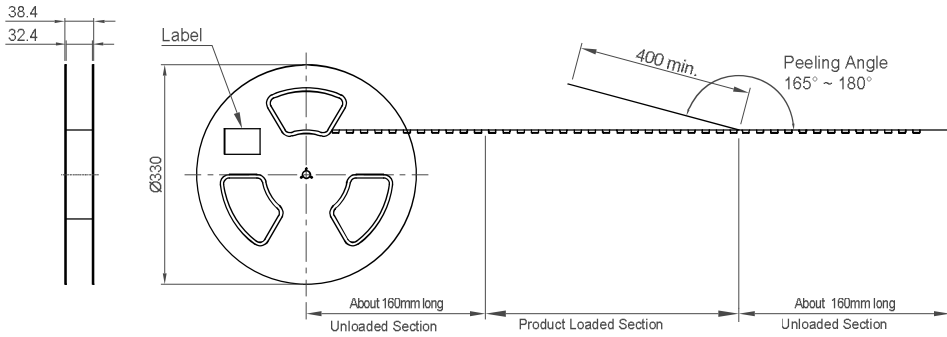


Recommended PCB Layout
As viewed from component side Tolerance: ±0.05mm

▨ Solder Area ▭ Component Outline

Plug and Receptacle Mating View

Part Number USB4085		Product Description USB 2.0 Type C Receptacle Dip Type, PCB Top Mount			 www.gct.co
Drawing Date 9th April 2018		Tolerances/Except as noted Length X ± 0.50 X.X ± 0.30 X.XX ± 0.20 X.XXX ± 0.10			
By Detail	CC USB4085 B PCN	Units Metric (mm)	Angle ± 2°	 	
Revision Date	B 28/09/23	This drawing is confidential and copyright of Global Connector Technology, Ltd (GCT). This drawing must not be copied or disclosed without written consent. E & OE			Not to Scale Drawn By CC Sheet No. 2/3



Notes:
Peeling off force of top tape: 0.1-1.3N (Peeling direction as shown)

Materials:
Carrier Tape: Polystyrene (PS)
Top Tape: PE
Reel Tape: Polystyrene (PS)
Bag: PE

Pcs / Reel	Reels / Carton	Total Quality
700	7	4,900 pcs

Part Number USB4085		Product Description USB 2.0 Type C Receptacle Dip Type, PCB Top Mount		 www.gct.co
Drawing Date 9th April 2018				
By Detail	CC USB4085 B PCN	Tolerances/Except as noted Length X ± 0.50 X.X ± 0.30 X.XX ± 0.20 X.XXX ± 0.10	Angle ± 2°	Units Metric (mm)
Revision Date	B 28/09/23	 This drawing is confidential and copyright of Global Connector Technology, Ltd (GCT). This drawing must not be copied or disclosed without written consent. E & OE		Not to Scale Drawn By CC Sheet No. 3/3