



3810 Shutterfly Road, Ste. 200, Charlotte, NC 28217 // Office: (704) 424-5448 // www.norcomp.net

**(Product Change Notification)**

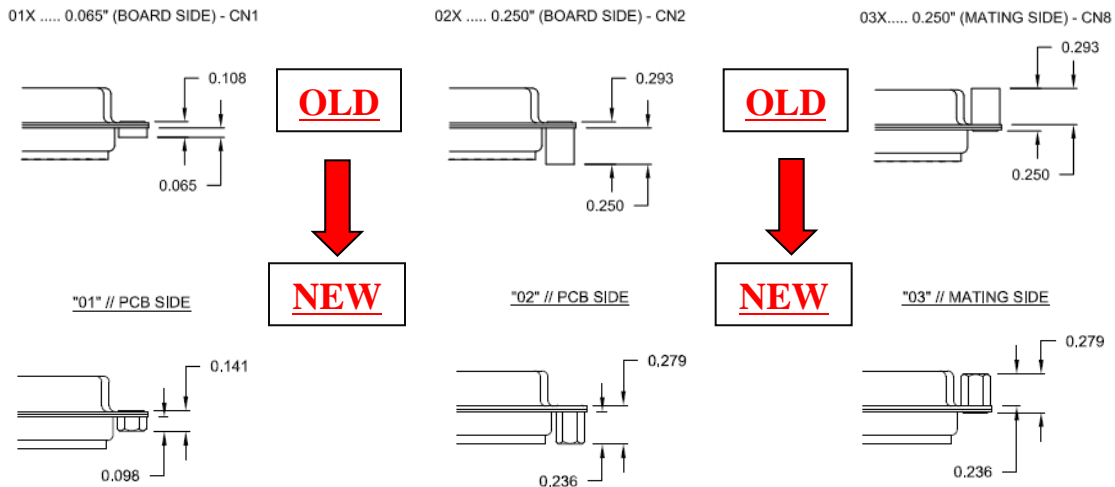
Monday, January 23<sup>rd</sup>, 2023

PCN# 071621

To Whom It May Concern:

In efforts to improve our quality and match industry standards NorComp has changed the geometry of the hardware associated with the part numbers listed on the subsequent page.

The hardware change pertains to shape and length for the following hardware options shown below. The illustrations below provide a better understanding of the change (all units are in inches). If you have any technical questions, please reach out to [eng@norcomp.net](mailto:eng@norcomp.net).



The last date to purchase the old variation will be Tuesday, February 28<sup>th</sup>, 2023. All orders placed on/after Wednesday March 1<sup>st</sup>, 2023 will use the new variant shown above.

You are receiving this notification as our records show that you have purchased some of these products in the last 5 years. We appreciate your understanding as we strive to offer you the most current information regarding our product.

Please confirm receipt & acceptance of product change notification by responding to this email. If you have any questions or concerns, please feel free to contact us at [sales@norcomp.net](mailto:sales@norcomp.net).

Regards,

Joshua Kadel  
Engineering Team Lead

172-009-103R011
172-009-103R021
172-009-103R031
172-009-113R011
172-009-113R021
172-009-113R031
172-009-143R011
172-009-143R021
172-009-143R031
172-009-203R011
172-009-203R021
172-009-203R031
172-009-213R011
172-009-213R021
172-009-213R031
172-009-243R011
172-009-243R021
172-009-243R031
172-015-103R011
172-015-103R021
172-015-103R031
172-015-113R011
172-015-113R021
172-015-113R031
172-015-143R011
172-015-143R021
172-015-143R031
172-015-203R011
172-015-203R021
172-015-203R031
172-015-213R011
172-015-213R021
172-015-213R031
172-015-243R011
172-015-243R021
172-015-243R031

172-025-103R011
172-025-103R021
172-025-103R031
172-025-113R011
172-025-113R021
172-025-113R031
172-025-143R011
172-025-143R021
172-025-143R031
172-025-203R011
172-025-203R021
172-025-203R031
172-025-213R011
172-025-213R021
172-025-213R031
172-025-243R011
172-025-243R021
172-025-243R031
172-037-103R011
172-037-103R021
172-037-103R031
172-037-113R011
172-037-113R021
172-037-113R031
172-037-143R011
172-037-143R021
172-037-143R031
172-037-203R011
172-037-203R021
172-037-203R031
172-037-213R011
172-037-213R021
172-037-213R031
172-037-243R011
172-037-243R021
172-037-243R031

172-050-103R011
172-050-103R021
172-050-103R031
172-050-113R011
172-050-113R021
172-050-113R031
172-050-143R011
172-050-143R021
172-050-143R031
172-050-203R011
172-050-203R021
172-050-203R031
172-050-213R011
172-050-213R021
172-050-213R031
172-050-243R011
172-050-243R021
172-050-243R031







172-050-143R001	<a href="https://content.norcomp.net/rohspdfs/Connectors/17Y/172/172-YYY-143RYY1.pdf">https://content.norcomp.net/rohspdfs/Connectors/17Y/172/172-YYY-143RYY1.pdf</a>
172-050-143R011	<a href="https://content.norcomp.net/rohspdfs/Connectors/17Y/172/172-YYY-143RYY1.pdf">https://content.norcomp.net/rohspdfs/Connectors/17Y/172/172-YYY-143RYY1.pdf</a>
172-050-143R021	<a href="https://content.norcomp.net/rohspdfs/Connectors/17Y/172/172-YYY-143RYY1.pdf">https://content.norcomp.net/rohspdfs/Connectors/17Y/172/172-YYY-143RYY1.pdf</a>
172-050-143R031	<a href="https://content.norcomp.net/rohspdfs/Connectors/17Y/172/172-YYY-143RYY1.pdf">https://content.norcomp.net/rohspdfs/Connectors/17Y/172/172-YYY-143RYY1.pdf</a>
172-050-143R051	<a href="https://content.norcomp.net/rohspdfs/Connectors/17Y/172/172-YYY-143RYY1.pdf">https://content.norcomp.net/rohspdfs/Connectors/17Y/172/172-YYY-143RYY1.pdf</a>
172-050-143R911	<a href="https://content.norcomp.net/rohspdfs/Connectors/17Y/172/172-YYY-143RYY1.pdf">https://content.norcomp.net/rohspdfs/Connectors/17Y/172/172-YYY-143RYY1.pdf</a>
172-050-203R001	<a href="https://content.norcomp.net/rohspdfs/Connectors/17Y/172/172-YYY-203RYY1.pdf">https://content.norcomp.net/rohspdfs/Connectors/17Y/172/172-YYY-203RYY1.pdf</a>
172-050-203R011	<a href="https://content.norcomp.net/rohspdfs/Connectors/17Y/172/172-YYY-203RYY1.pdf">https://content.norcomp.net/rohspdfs/Connectors/17Y/172/172-YYY-203RYY1.pdf</a>
172-050-203R021	<a href="https://content.norcomp.net/rohspdfs/Connectors/17Y/172/172-YYY-203RYY1.pdf">https://content.norcomp.net/rohspdfs/Connectors/17Y/172/172-YYY-203RYY1.pdf</a>
172-050-203R031	<a href="https://content.norcomp.net/rohspdfs/Connectors/17Y/172/172-YYY-203RYY1.pdf">https://content.norcomp.net/rohspdfs/Connectors/17Y/172/172-YYY-203RYY1.pdf</a>
172-050-213R001	<a href="https://content.norcomp.net/rohspdfs/Connectors/17Y/172/172-YYY-213RYY1.pdf">https://content.norcomp.net/rohspdfs/Connectors/17Y/172/172-YYY-213RYY1.pdf</a>
172-050-213R011	<a href="https://content.norcomp.net/rohspdfs/Connectors/17Y/172/172-YYY-213RYY1.pdf">https://content.norcomp.net/rohspdfs/Connectors/17Y/172/172-YYY-213RYY1.pdf</a>
172-050-213R021	<a href="https://content.norcomp.net/rohspdfs/Connectors/17Y/172/172-YYY-213RYY1.pdf">https://content.norcomp.net/rohspdfs/Connectors/17Y/172/172-YYY-213RYY1.pdf</a>
172-050-213R031	<a href="https://content.norcomp.net/rohspdfs/Connectors/17Y/172/172-YYY-213RYY1.pdf">https://content.norcomp.net/rohspdfs/Connectors/17Y/172/172-YYY-213RYY1.pdf</a>
172-050-213R051	<a href="https://content.norcomp.net/rohspdfs/Connectors/17Y/172/172-YYY-213RYY1.pdf">https://content.norcomp.net/rohspdfs/Connectors/17Y/172/172-YYY-213RYY1.pdf</a>
172-050-213R911	<a href="https://content.norcomp.net/rohspdfs/Connectors/17Y/172/172-YYY-213RYY1.pdf">https://content.norcomp.net/rohspdfs/Connectors/17Y/172/172-YYY-213RYY1.pdf</a>
172-050-243R001	<a href="https://content.norcomp.net/rohspdfs/Connectors/17Y/172/172-YYY-243RYY1.pdf">https://content.norcomp.net/rohspdfs/Connectors/17Y/172/172-YYY-243RYY1.pdf</a>
172-050-243R011	<a href="https://content.norcomp.net/rohspdfs/Connectors/17Y/172/172-YYY-243RYY1.pdf">https://content.norcomp.net/rohspdfs/Connectors/17Y/172/172-YYY-243RYY1.pdf</a>
172-050-243R021	<a href="https://content.norcomp.net/rohspdfs/Connectors/17Y/172/172-YYY-243RYY1.pdf">https://content.norcomp.net/rohspdfs/Connectors/17Y/172/172-YYY-243RYY1.pdf</a>
172-050-243R031	<a href="https://content.norcomp.net/rohspdfs/Connectors/17Y/172/172-YYY-243RYY1.pdf">https://content.norcomp.net/rohspdfs/Connectors/17Y/172/172-YYY-243RYY1.pdf</a>
172-050-243R051	<a href="https://content.norcomp.net/rohspdfs/Connectors/17Y/172/172-YYY-243RYY1.pdf">https://content.norcomp.net/rohspdfs/Connectors/17Y/172/172-YYY-243RYY1.pdf</a>
172-050-243R911	<a href="https://content.norcomp.net/rohspdfs/Connectors/17Y/172/172-YYY-243RYY1.pdf">https://content.norcomp.net/rohspdfs/Connectors/17Y/172/172-YYY-243RYY1.pdf</a>

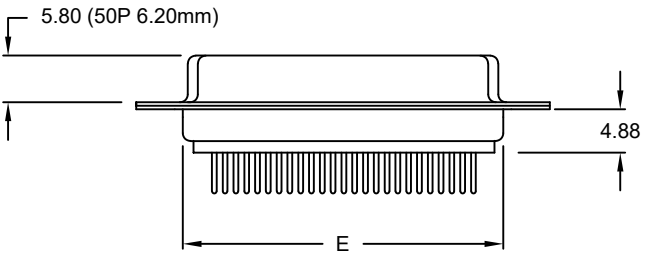
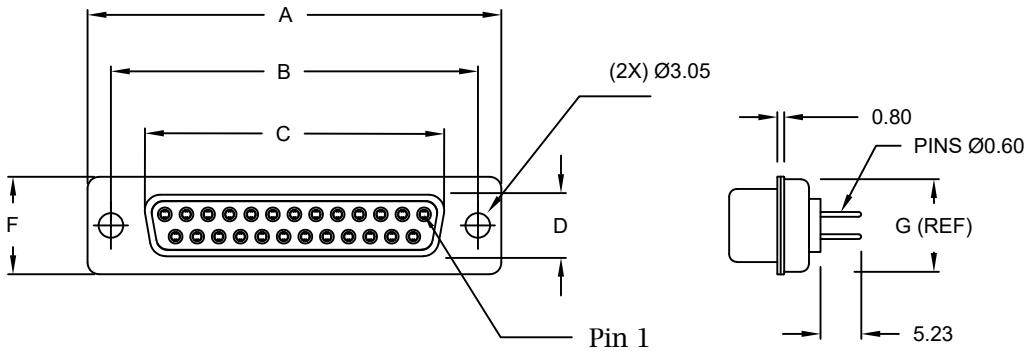
DIMENSIONS(mm)							
SIZE	A <sup>±.36</sup>	B <sup>±.10</sup>	C <sup>±.15</sup>	D <sup>±.15</sup>	E <sup>±.38</sup>	F <sup>±.25</sup>	G (REF)
9	30.80	24.99	16.30	8.00	19.20	12.60	10.75
15	39.15	33.32	24.60	8.00	27.70	12.60	10.75
25	53.04	47.04	38.40	8.00	41.10	12.60	10.75
37	69.32	63.50	54.80	8.00	57.30	12.60	10.75
50	66.93	61.11	52.30	10.80	55.10	15.20	13.30

**MATERIAL:**

SHELL: STEEL, NICKEL PLATED  
 INSULATOR: PA6T, UL94 V-0  
 PROCESS TEMP.: 260°C  
 CONTACT: BRASS (FLOATING CONTACTS)

**ELECTRICAL:**

CURRENT RATING: 5 AMPS  
 CONTACT RESISTANCE: 15 mOhms Max.  
 INSULATION RESISTANCE: 1,000 MOhms Min.  
 VOLTAGE: 500VAC FOR 1 MINUTE  
 TEMPERATURE: -50° C TO 100° C



**172-YYY-213RYY1**

- SERIES \_\_\_\_\_
- POSITIONS \_\_\_\_\_
- 009 \_\_\_\_\_
- 015 \_\_\_\_\_
- 025 \_\_\_\_\_
- 037 \_\_\_\_\_
- 050 \_\_\_\_\_
- GENDER \_\_\_\_\_
- 2 = FEMALE \_\_\_\_\_
- TERMINATION \_\_\_\_\_
- 1 = DIP SOLDER \_\_\_\_\_
- SHELL PLATING \_\_\_\_\_
- 3 = NICKEL \_\_\_\_\_
- HARDWARE OPTIONS \_\_\_\_\_
- 00 = NO HARDWARE \_\_\_\_\_
- 01 = .098" NUT (PCB SIDE) \_\_\_\_\_
- 02 = .236" NUT (PCB SIDE) \_\_\_\_\_
- 03 = .236" NUT (MATING SIDE) \_\_\_\_\_
- 05 = .237" 4-40 BOARD LOCK \_\_\_\_\_
- 90 = .237" 4-40 BOARD LOCK \_\_\_\_\_
- FOR 0.093" BOARD MAX. \_\_\_\_\_
- 91 = .237" 4-40 SPACER/ BOARD LOCK \_\_\_\_\_
- 92 = .237" 4-40 SPACER/ BOARD LOCK \_\_\_\_\_
- FOR 0.093" BOARD MAX. \_\_\_\_\_
- PLATING OPTIONS \_\_\_\_\_
- 1 = GOLD FLASH \_\_\_\_\_
- 2 = 30MICRO-INCH GOLD \_\_\_\_\_

RoHS COMPLIANT

UNITS = mm

DO NOT SCALE FROM DRAWING

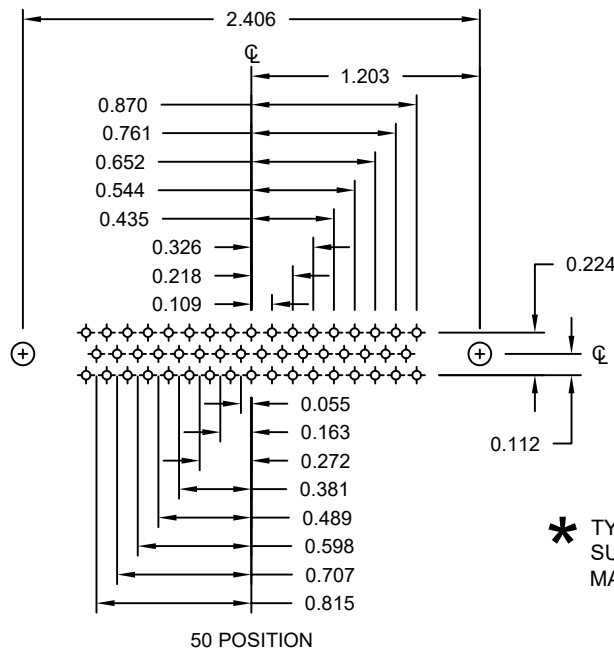
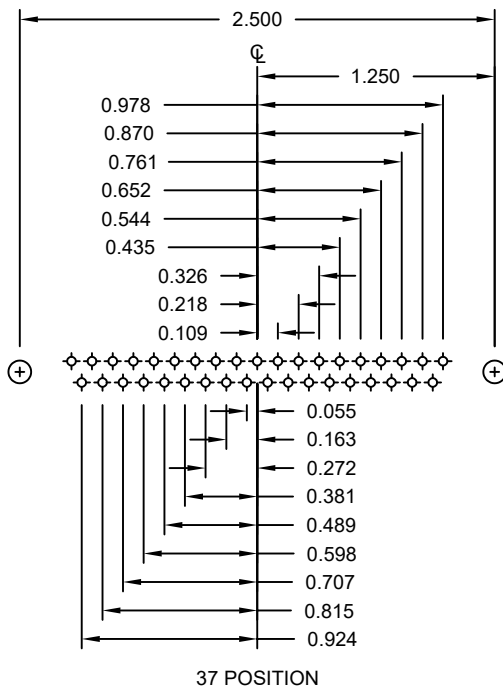
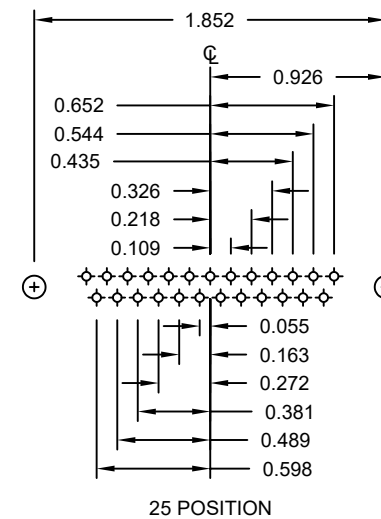
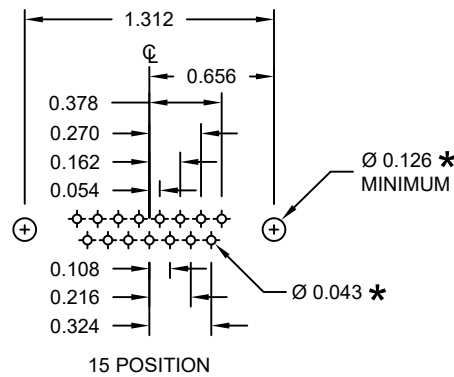
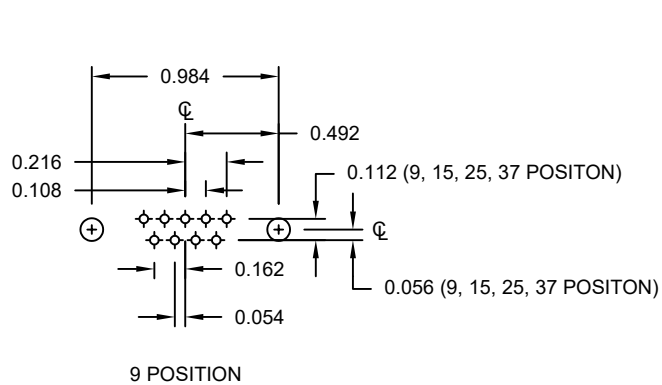


THESE DRAWINGS AND SPECIFICATIONS ARE THE PROPERTY OF NorComp AND SHALL NOT BE REPRODUCED, COPIED OR USED AS THE BASIS FOR THE MANUFACTURE OR SALE OF APPARATUS WITHOUT WRITTEN PERMISSION.

DRAWN: P. JENKINS  
 DATE: 09/12/2005

NorComp

SCALE: NTS	SHEET 1 OF 3	REV 23
DWG NO. 172-YYY-213RYY1		



\* TYP.  
SUGGESTED SIZE  
MAY NOT BE SUITABLE FOR ALL APPLICATIONS

RoHS COMPLIANT

UNITS = inch

DO NOT SCALE FROM DRAWING



THESE DRAWINGS AND SPECIFICATIONS ARE THE PROPERTY OF NorComp AND SHALL NOT BE REPRODUCED, COPIED OR USED AS THE BASIS FOR THE MANUFACTURE OR SALE OF APPARATUS WITHOUT WRITTEN PERMISSION.

DRAWN:  
P. JENKINS

DATE:  
09/12/2005

NorComp

SCALE:  
NTS

SHEET OF  
2 3

REV  
23

DWG NO.

172-YYY-213RYY1

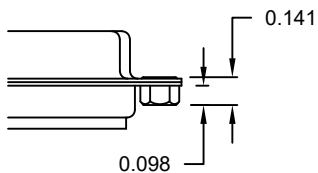


**TOLERANCE:**  
 ALL DIMENSIONS ARE ±0.010  
 UNLESS OTHERWISE  
 SPECIFIED

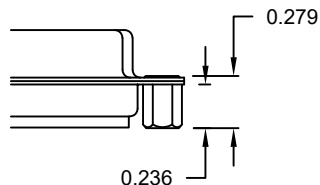
**ALL CLINCH-NUTS ARE 4-40 INTERNAL THREADS**

**\*\*NOTE: 90 & 92 OPTION FOR 0.093" MAX. BOARD THICKNESS**

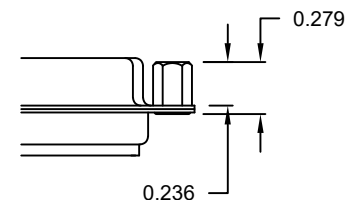
"01" // PCB SIDE



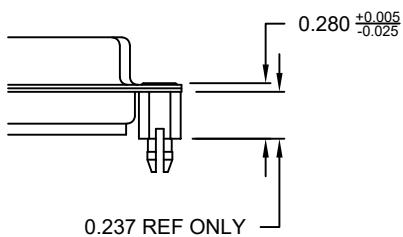
"02" // PCB SIDE



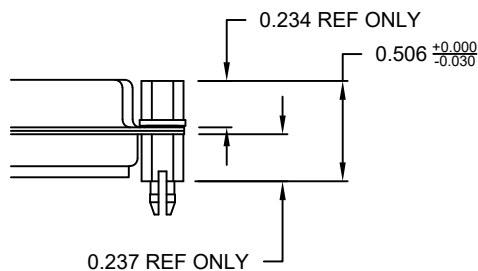
"03" // MATING SIDE



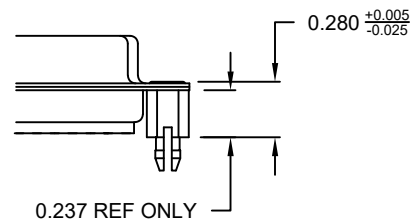
"05" // PCB SIDE



"91" // PCB SIDE

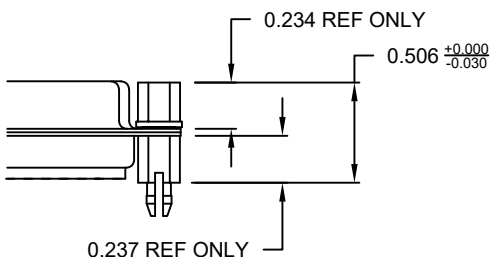


"90" // PCB SIDE \*\*



NOTE: 4-40 FEMALE SCREW LOCK IS REMOVABLE

"92" // PCB SIDE \*\*



RoHS COMPLIANT

UNITS = inch

DO NOT SCALE FROM DRAWING



THESE DRAWINGS AND SPECIFICATIONS ARE THE PROPERTY OF NorComp AND SHALL NOT BE REPRODUCED, COPIED OR USED AS THE BASIS FOR THE MANUFACTURE OR SALE OF APPARATUS WITHOUT WRITTEN PERMISSION.

DRAWN:  
 P. JENKINS

DATE:  
 09/12/2005

**NorComp**

SCALE:  
 NTS

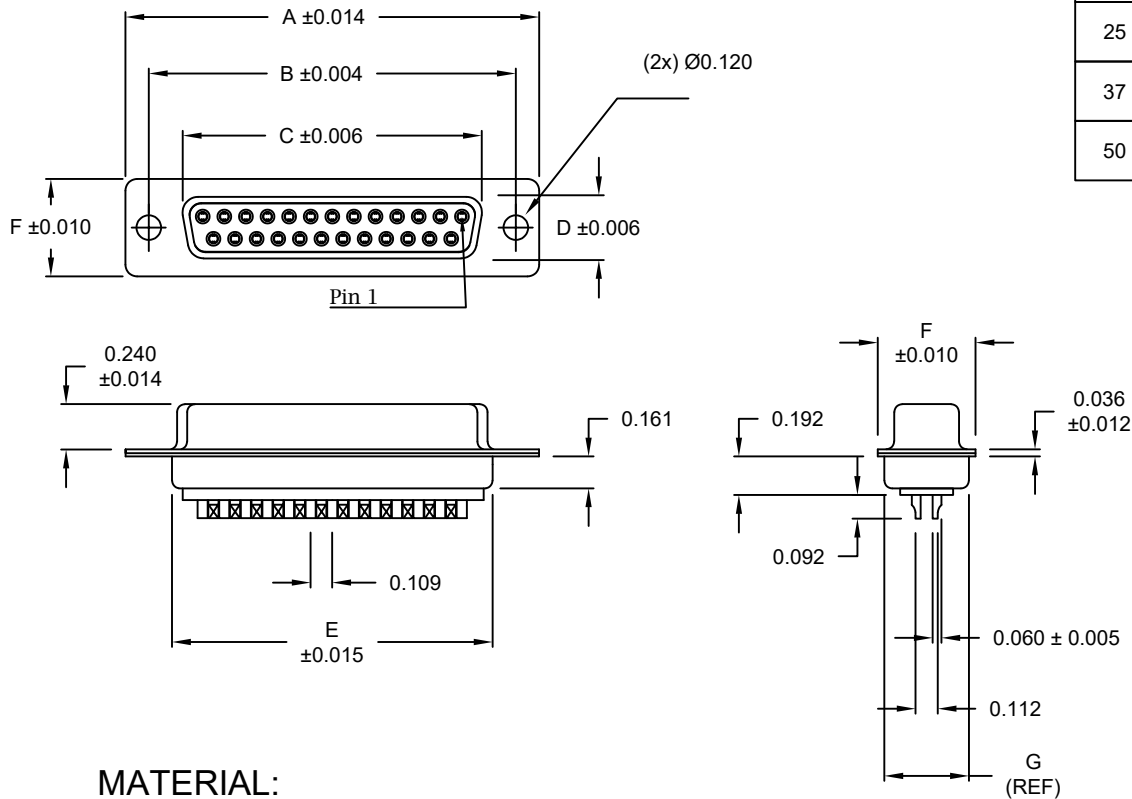
SHEET 3 OF 3

REV 23

DWG NO.

172-YYY-213RYY1

WILL ACCEPT 26-20 AWG WIRE



**MATERIAL:**

SHELL: STEEL, NICKEL PLATED  
 INSULATOR: PA6T, UL94 V-0  
 PROCESS TEMP.: 260°C  
 CONTACT: BRASS

**ELECTRICAL:**

CURRENT RATING: 5 AMPS  
 CONTACT RESISTANCE: 15 mOhms Max.  
 INSULATION RESISTANCE: 1,000 MOhms Min.  
 VOLTAGE: 500VAC FOR 1 MINUTE  
 TEMPERATURE: -50° C TO 100° C

		DIMENSIONS						
No. OF PINS	UNITS	A	B	C	D	E	F	G
9	inch	1.213	0.984	0.642	0.315	0.760	0.496	0.423
	mm	30.80	24.99	16.30	8.00	19.30	12.60	10.75
15	inch	1.541	1.312	0.969	0.315	1.083	0.496	0.423
	mm	39.15	33.32	24.60	8.00	27.51	12.60	10.75
25	inch	2.088	1.852	1.512	0.315	1.630	0.496	0.423
	mm	53.04	47.04	38.40	8.00	41.40	12.60	10.75
37	inch	2.729	2.500	2.157	0.315	2.276	0.496	0.423
	mm	69.32	63.50	54.80	8.00	57.81	12.60	10.75
50	inch	2.635	2.406	2.059	0.425	2.182	0.598	0.524
	mm	66.93	61.11	52.30	10.80	55.42	15.20	13.30

172-YYY-203RYY1

SERIES \_\_\_\_\_  
 POSITIONS \_\_\_\_\_  
 009 \_\_\_\_\_  
 015 \_\_\_\_\_  
 025 \_\_\_\_\_  
 037 \_\_\_\_\_  
 050 \_\_\_\_\_  
 GENDER \_\_\_\_\_  
 2 = FEMALE  
 TERMINATION \_\_\_\_\_  
 0 = SOLDER CUP  
 SHELL PLATING \_\_\_\_\_  
 3 = NICKEL  
 HARDWARE OPTIONS \_\_\_\_\_  
 00 = NO HARDWARE  
 01 = .098" CLINCH NUT (SOLDER SIDE)  
 02 = .236" CLINCH NUT (SOLDER SIDE)  
 03 = .236" CLINCH NUT (MATING SIDE)  
 05 = .237" 4-40 BOARD LOCK  
 91 = .237" 4-40 SPACER/ BOARD LOCK  
 PLATING OPTIONS \_\_\_\_\_  
 1 = GOLD FLASH  
 2 = 30MICRO-INCH GOLD

RoHS COMPLIANT

UNITS = inch

DO NOT SCALE FROM DRAWING



THESE DRAWINGS AND SPECIFICATIONS ARE THE PROPERTY OF NorComp AND SHALL NOT BE REPRODUCED, COPIED OR USED AS THE BASIS FOR THE MANUFACTURE OR SALE OF APPARATUS WITHOUT WRITTEN PERMISSION.

DRAWN:  
P. JENKINS

DATE:  
08/24/1998

NorComp

SCALE:  
NTS

SHEET OF  
1 2

REV  
17

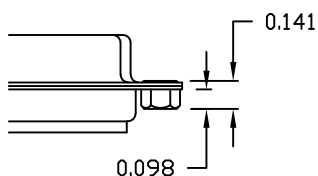
DWG NO.

172-YYY-203RYY1

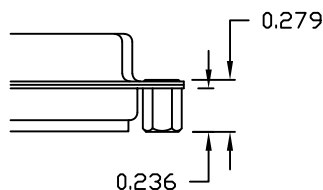
**TOLERANCE:**  
 ALL DIMENSIONS ARE  $\pm 0.010$   
 UNLESS OTHERWISE  
 SPECIFIED

ALL CLINCH-NUTS ARE 4-40 INTERNAL THREADS

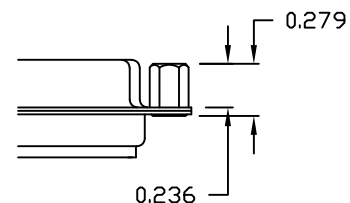
"01" // SOLDER SIDE



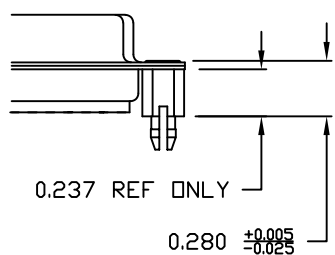
"02" // SOLDER SIDE



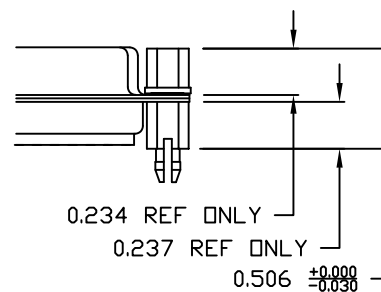
"03" // MATING SIDE



"05" // PCB SIDE



"91" // PCB SIDE



NOTE: 4-40 FEMALE SCREW LOCK IS REMOVABLE

RoHS COMPLIANT

UNITS = inch

DO NOT SCALE FROM DRAWING



THESE DRAWINGS AND SPECIFICATIONS ARE THE PROPERTY OF NorComp AND SHALL NOT BE REPRODUCED, COPIED OR USED AS THE BASIS FOR THE MANUFACTURE OR SALE OF APPARATUS WITHOUT WRITTEN PERMISSION.

DRAWN:  
 P. JENKINS

DATE:  
 08/24/1998

**NorComp**

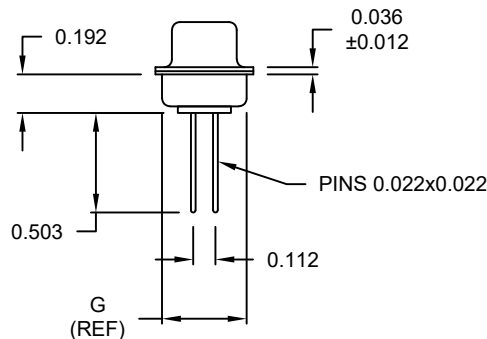
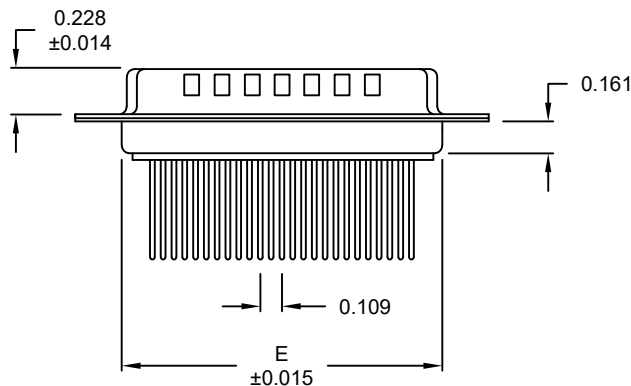
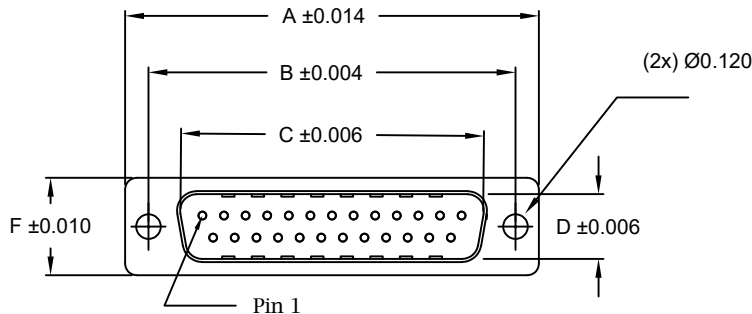
SCALE:  
 NTS

SHEET OF  
 2 2

REV  
 17

DWG NO.

172-YYY-203RYY1



No. OF PINS	UNITS	DIMENSIONS						
		A	B	C	D	E	F	G
9	inch	1.213	0.984	0.669	0.331	0.760	0.496	0.423
	mm	30.80	24.99	17.00	8.40	19.30	12.60	10.75
15	inch	1.541	1.312	0.996	0.331	1.083	0.496	0.423
	mm	39.15	33.32	25.30	8.40	27.51	12.60	10.75
25	inch	2.088	1.852	1.535	0.331	1.630	0.496	0.423
	mm	53.04	47.04	39.00	8.40	41.40	12.60	10.75
37	inch	2.729	2.500	2.181	0.331	2.276	0.496	0.423
	mm	69.32	63.50	55.40	8.40	57.81	12.60	10.75
50	inch	2.635	2.406	2.079	0.437	2.182	0.598	0.524
	mm	66.93	61.11	52.80	11.10	55.42	15.20	13.30

172-YYY-143RYY1

- SERIES \_\_\_\_\_
- POSITIONS \_\_\_\_\_
- 009 \_\_\_\_\_
- 015 \_\_\_\_\_
- 025 \_\_\_\_\_
- 037 \_\_\_\_\_
- 050 \_\_\_\_\_
- GENDER \_\_\_\_\_
- 1 = MALE \_\_\_\_\_
- TERMINATION \_\_\_\_\_
- 4 = WIRE WRAP \_\_\_\_\_
- SHELL PLATING \_\_\_\_\_
- 3 = NICKEL (GROUND INDENTS) \_\_\_\_\_
- HARDWARE OPTIONS \_\_\_\_\_
- 00 = NO HARDWARE \_\_\_\_\_
- 01 = .098" CLINCH NUT (PCB SIDE) \_\_\_\_\_
- 02 = .236" CLINCH NUT (PCB SIDE) \_\_\_\_\_
- 03 = .236" CLINCH NUT (MATING SIDE) \_\_\_\_\_
- 05 = .237" 4-40 BOARD LOCK \_\_\_\_\_
- 91 = .237" 4-40 SPACER/ BOARD LOCK \_\_\_\_\_
- PLATING OPTIONS \_\_\_\_\_
- 1 = GOLD FLASH \_\_\_\_\_
- 2 = 30MICRO-INCH GOLD \_\_\_\_\_

**MATERIAL:**

SHELL: STEEL, NICKEL PLATED  
 INSULATOR: PA6T, UL94 V-0  
 PROCESS TEMP.: 260°C  
 CONTACT: BRASS

**ELECTRICAL:**

CURRENT RATING: 5 AMPS  
 CONTACT RESISTANCE: 15 mOhms Max.  
 INSULATION RESISTANCE: 1,000 MOhms Min.  
 VOLTAGE: 500VAC FOR 1 MINUTE  
 TEMPERATURE: -50° C TO 100° C

RoHS COMPLIANT

UNITS = inch

DO NOT SCALE FROM DRAWING



THESE DRAWINGS AND SPECIFICATIONS ARE THE PROPERTY OF NorComp AND SHALL NOT BE REPRODUCED, COPIED OR USED AS THE BASIS FOR THE MANUFACTURE OR SALE OF APPARATUS WITHOUT WRITTEN PERMISSION.

DRAWN:  
P. JENKINS

DATE:  
11/23/2005

NorComp

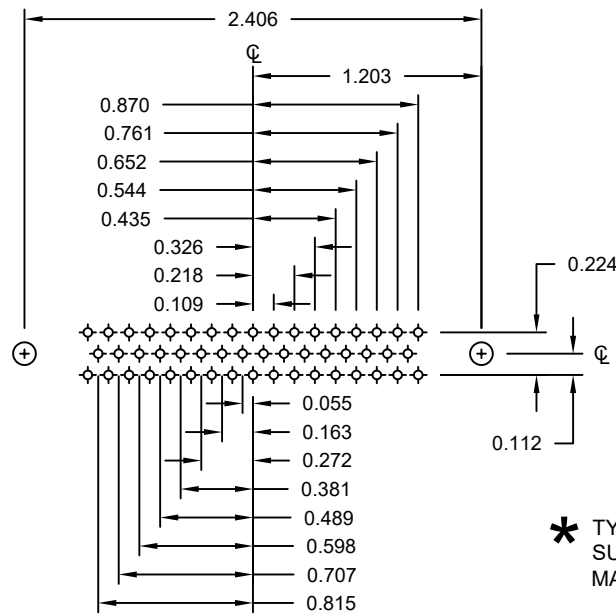
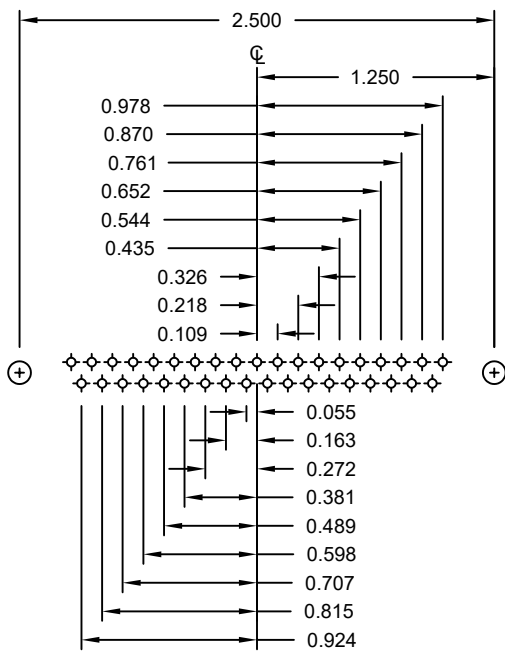
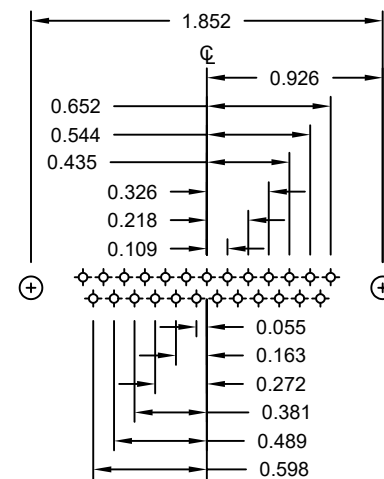
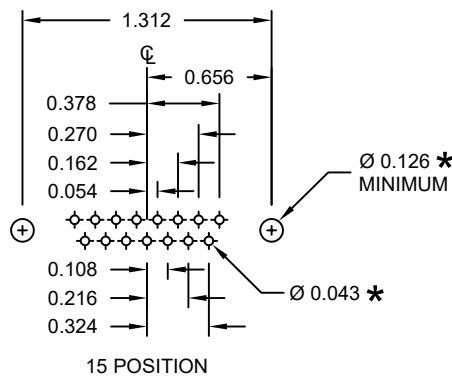
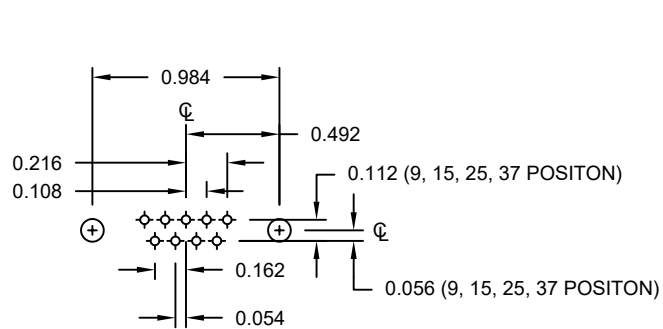
SCALE:  
NTS

SHEET OF  
1 3

REV  
15

DWG NO.

172-YYY-143RYY1



\* TYP. SUGGESTED SIZE MAY NOT BE SUITABLE FOR ALL APPLICATIONS

RoHS COMPLIANT

UNITS = inch

DO NOT SCALE FROM DRAWING



THESE DRAWINGS AND SPECIFICATIONS ARE THE PROPERTY OF NorComp AND SHALL NOT BE REPRODUCED, COPIED OR USED AS THE BASIS FOR THE MANUFACTURE OR SALE OF APPARATUS WITHOUT WRITTEN PERMISSION.

DRAWN:  
P. JENKINS

DATE:  
11/23/2005

NorComp

SCALE:  
NTS

SHEET OF  
2 3

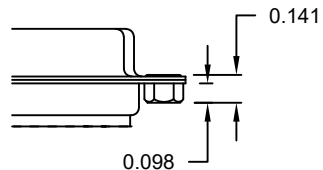
REV  
15

DWG NO.

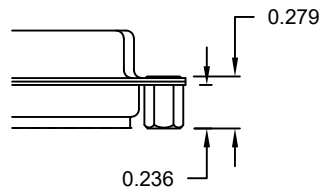
172-YYY-143RYY1

ALL CLINCH-NUTS ARE 4-40 INTERNAL THREADS

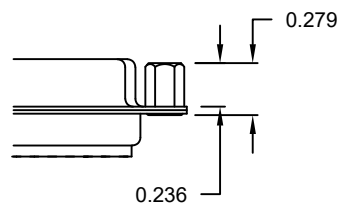
01X ..... 0.098" (PCB SIDE)



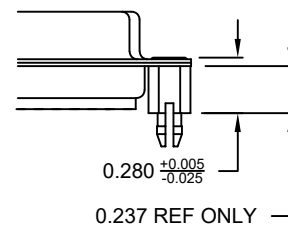
02X ..... 0.236" (PCB SIDE)



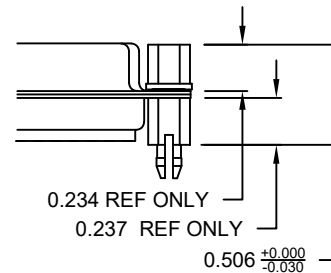
03X..... 0.236" (MATING SIDE)



05X ..... 0.237" (BOARD SIDE)



91X ..... 0.237" (BOARD SIDE)



**TOLERANCE:**  
ALL DIMENSIONS ARE  $\pm 0.010$   
UNLESS OTHERWISE  
SPECIFIED

NOTE: 4-40 FEMALE SCREW LOCK IS REMOVABLE

RoHS COMPLIANT

UNITS = inch

DO NOT SCALE FROM DRAWING



THESE DRAWINGS AND SPECIFICATIONS ARE THE PROPERTY OF NorComp AND SHALL NOT BE REPRODUCED, COPIED OR USED AS THE BASIS FOR THE MANUFACTURE OR SALE OF APPARATUS WITHOUT WRITTEN PERMISSION.

DRAWN:  
P. JENKINS

DATE:  
11/23/2005

NorComp

SCALE:  
NTS

SHEET 3 OF 3

REV 15

DWG NO.

172-YYY-143RYY1

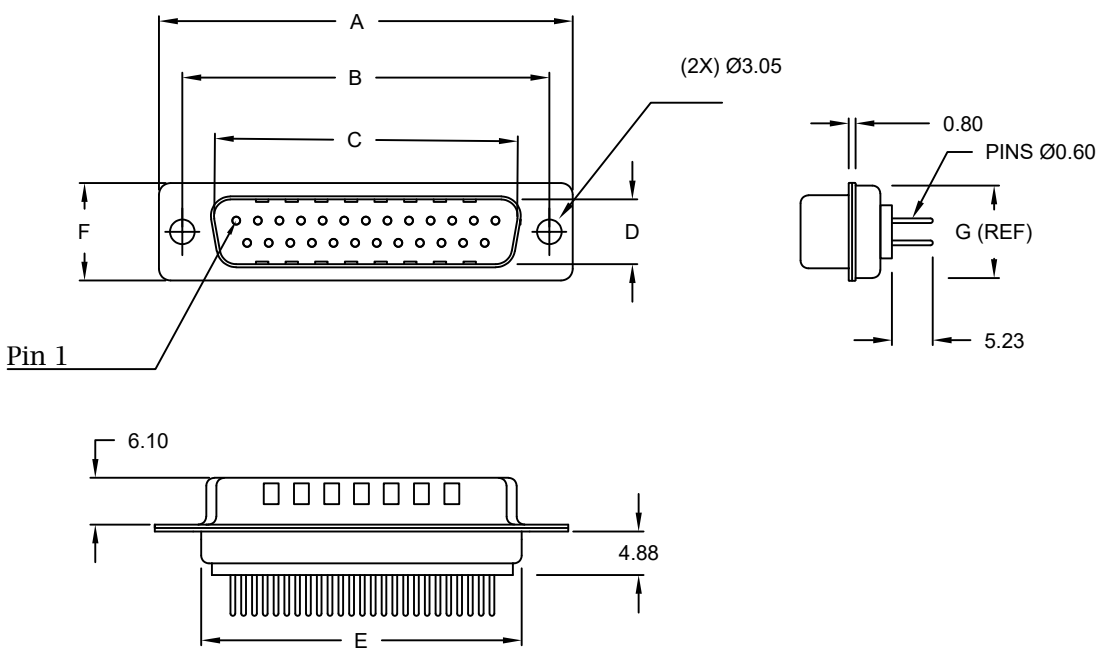
DIMENSIONS(mm)							
SIZE	A±.36	B±.10	C±.15	D±.15	E±.38	F±.25	G (REF)
9	30.80	24.99	17.00	8.40	19.20	12.60	10.75
15	39.15	33.32	25.30	8.40	27.70	12.60	10.75
25	53.04	47.04	39.00	8.40	41.10	12.60	10.75
37	69.32	63.50	55.40	8.40	57.30	12.60	10.75
50	66.93	61.11	52.80	11.10	55.10	15.20	13.30

**MATERIAL:**

SHELL: STEEL, NICKEL PLATED  
 INSULATOR: PA6T, UL94 V-0  
 PROCESS TEMP.: 260°C  
 CONTACT: BRASS (FLOATING CONTACTS)

**ELECTRICAL:**

CURRENT RATING: 5 AMPS  
 CONTACT RESISTANCE: 15 mOhms Max.  
 INSULATION RESISTANCE: 1,000 MOhms Min.  
 VOLTAGE: 500VAC FOR 1 MINUTE  
 TEMPERATURE: -50° C TO 100° C



**172-YYY-113RYY1**

- SERIES \_\_\_\_\_
- POSITIONS \_\_\_\_\_
- 009 \_\_\_\_\_
- 015 \_\_\_\_\_
- 025 \_\_\_\_\_
- 037 \_\_\_\_\_
- 050 \_\_\_\_\_
- GENDER \_\_\_\_\_
- 1 = MALE
- TERMINATION \_\_\_\_\_
- 1 = DIP SOLDER
- SHELL PLATING \_\_\_\_\_
- 3 = NICKEL (GROUND INDENTS)
- HARDWARE OPTIONS \_\_\_\_\_
- 00 = NO HARDWARE
- 01 = .098" NUT (PCB SIDE)
- 02 = .236" NUT (PCB SIDE)
- 03 = .236" NUT (MATING SIDE)
- 05 = .237" 4-40 BOARD LOCK
- 90 = .237" 4-40 BOARD LOCK
- FOR 0.093" BOARD MAX.
- 91 = .237" 4-40 SPACER/ BOARD LOCK
- 92 = .237" 4-40 SPACER/ BOARD LOCK
- FOR 0.093" BOARD MAX.
- PLATING OPTIONS \_\_\_\_\_
- 1 = GOLD FLASH
- 2 = 30MICRO-INCH GOLD

RoHS COMPLIANT

UNITS = mm

DO NOT SCALE FROM DRAWING

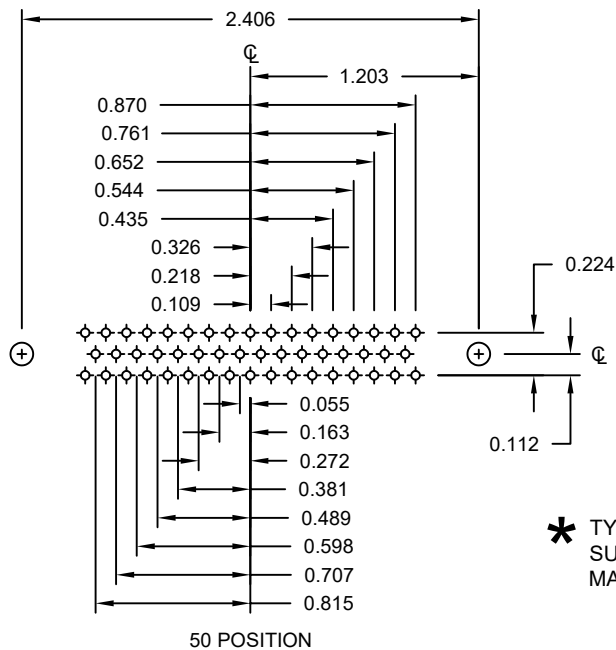
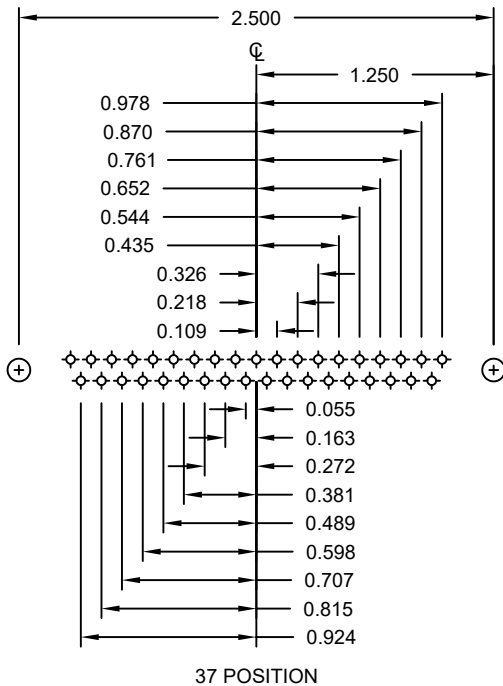
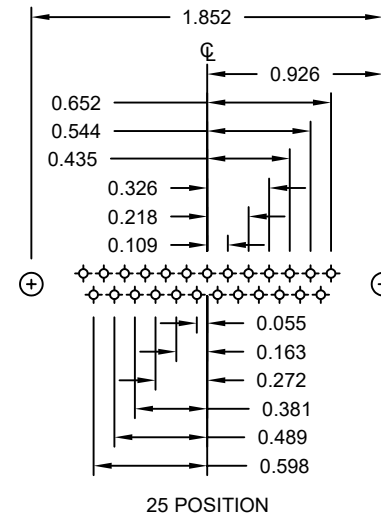
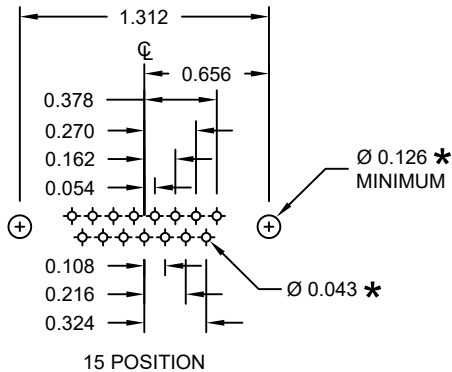
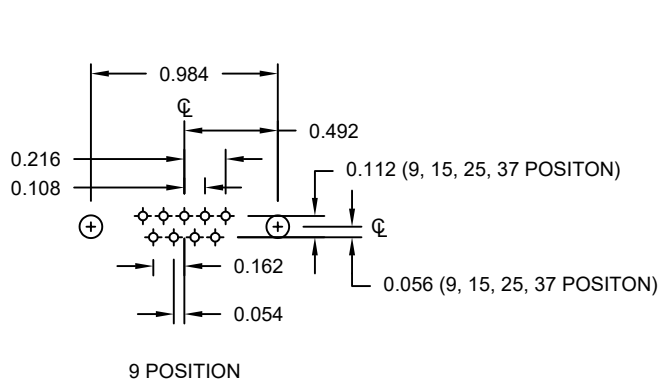


THESE DRAWINGS AND SPECIFICATIONS ARE THE PROPERTY OF NorComp AND SHALL NOT BE REPRODUCED, COPIED OR USED AS THE BASIS FOR THE MANUFACTURE OR SALE OF APPARATUS WITHOUT WRITTEN PERMISSION.

DRAWN: P. JENKINS  
 DATE: 09/12/2005

**NorComp**

SCALE: NTS	SHEET 1 OF 3	REV 21
DWG NO. 172-YYY-113RYY1		



\* TYP. SUGGESTED SIZE MAY NOT BE SUITABLE FOR ALL APPLICATIONS

RoHS COMPLIANT

UNITS = inch

DO NOT SCALE FROM DRAWING



THESE DRAWINGS AND SPECIFICATIONS ARE THE PROPERTY OF NorComp AND SHALL NOT BE REPRODUCED, COPIED OR USED AS THE BASIS FOR THE MANUFACTURE OR SALE OF APPARATUS WITHOUT WRITTEN PERMISSION.

DRAWN: P. JENKINS

DATE: 09/12/2005

NorComp

SCALE: NTS

SHEET 2 OF 3

REV 21

DWG NO.

172-YYY-113RYY1

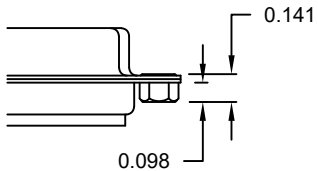


**TOLERANCE:**  
 ALL DIMENSIONS ARE  $\pm 0.010$   
 UNLESS OTHERWISE  
 SPECIFIED

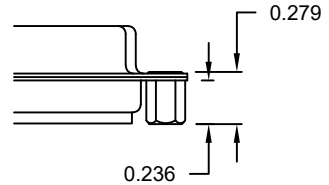
**ALL CLINCH-NUTS ARE 4-40 INTERNAL THREADS**

**\*\*NOTE: 90 & 92 OPTION FOR 0.093" MAX. BOARD THICKNESS**

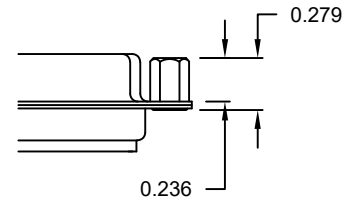
"01" // PCB SIDE



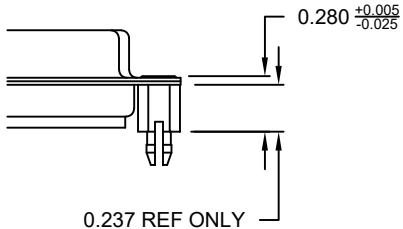
"02" // PCB SIDE



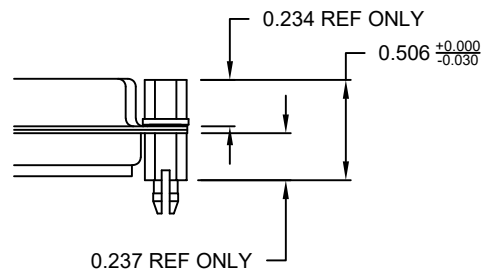
"03" // MATING SIDE



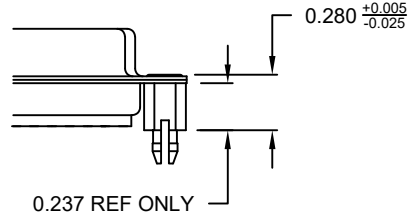
"05" // PCB SIDE



"91" // PCB SIDE

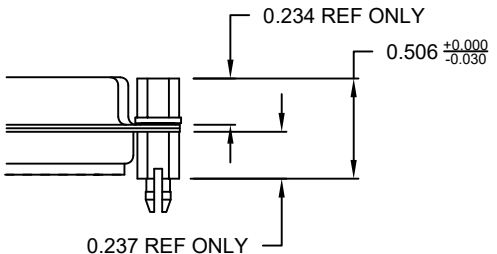


"90" // PCB SIDE \*\*



NOTE: 4-40 FEMALE SCREW LOCK IS REMOVABLE

"92" // PCB SIDE \*\*



RoHS COMPLIANT

UNITS = inch

DO NOT SCALE FROM DRAWING



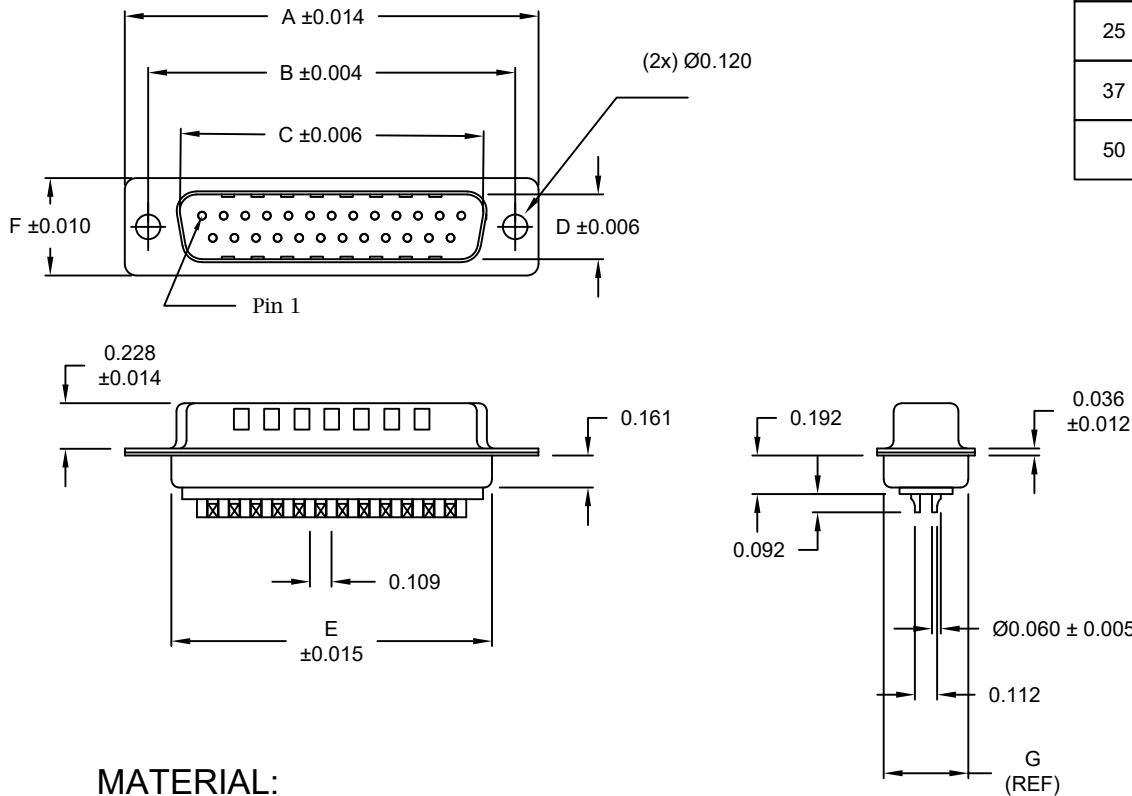
THESE DRAWINGS AND SPECIFICATIONS ARE THE PROPERTY OF NorComp AND SHALL NOT BE REPRODUCED, COPIED OR USED AS THE BASIS FOR THE MANUFACTURE OR SALE OF APPARATUS WITHOUT WRITTEN PERMISSION.

DRAWN:  
**P. JENKINS**  
 DATE:  
**09/12/2005**

**NorComp**

SCALE: NTS	SHEET 3	OF 3	REV 21
DWG NO. <b>172-YYY-113RYY1</b>			

WILL ACCEPT 26-20 AWG WIRE



**MATERIAL:**

SHELL: STEEL, NICKEL PLATED  
 INSULATOR: PA6T, UL94 V-0  
 PROCESS TEMP.: 260°C  
 CONTACT: BRASS

**ELECTRICAL:**

CURRENT RATING: 5 AMPS  
 CONTACT RESISTANCE: 15 mOhms Max.  
 INSULATION RESISTANCE: 1,000 MOhms Min.  
 VOLTAGE: 500VAC FOR 1 MINUTE  
 TEMPERATURE: -50° C TO 100° C

No. OF PINS	UNITS	DIMENSIONS						
		A	B	C	D	E	F	G
9	inch	1.213	0.984	0.669	0.331	0.760	0.496	0.423
	mm	30.80	24.99	17.00	8.40	19.30	12.60	10.75
15	inch	1.541	1.312	0.996	0.331	1.083	0.496	0.423
	mm	39.15	33.32	25.30	8.40	27.51	12.60	10.75
25	inch	2.088	1.852	1.535	0.331	1.630	0.496	0.423
	mm	53.04	47.04	39.00	8.40	41.40	12.60	10.75
37	inch	2.729	2.500	2.181	0.331	2.276	0.496	0.423
	mm	69.32	63.50	55.40	8.40	57.81	12.60	10.75
50	inch	2.635	2.406	2.079	0.437	2.182	0.598	0.524
	mm	66.93	61.11	52.80	11.10	55.42	15.20	13.30

172-YYY-103RYY1

SERIES \_\_\_\_\_  
 POSITIONS \_\_\_\_\_  
 009  
 015  
 025  
 037  
 050  
 GENDER \_\_\_\_\_  
 1 = MALE  
 TERMINATION \_\_\_\_\_  
 0 = SOLDER CUP  
 SHELL PLATING \_\_\_\_\_  
 3 = NICKEL (GROUND INDENTS)  
 HARDWARE OPTIONS \_\_\_\_\_  
 00 = NO HARDWARE  
 01 = .098" CLINCH NUT (SOLDER SIDE)  
 02 = .236" CLINCH NUT (SOLDER SIDE)  
 03 = .236" CLINCH NUT (MATING SIDE)  
 05 = .237" 4-40 BOARD LOCK  
 91 = .237" 4-40 SPACER/ BOARD LOCK  
 PLATING OPTIONS \_\_\_\_\_  
 1 = GOLD FLASH  
 2 = 30MICRO-INCH GOLD

RoHS COMPLIANT

UNITS = inch

DO NOT SCALE FROM DRAWING



THESE DRAWINGS AND SPECIFICATIONS ARE THE PROPERTY OF NorComp AND SHALL NOT BE REPRODUCED, COPIED OR USED AS THE BASIS FOR THE MANUFACTURE OR SALE OF APPARATUS WITHOUT WRITTEN PERMISSION.

DRAWN:  
P. JENKINS

DATE:  
08/24/1998

NorComp

SCALE:  
NTS

SHEET OF  
1 2

REV  
15

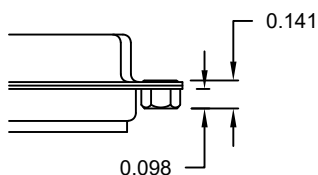
DWG NO.

172-YYY-103RYY1

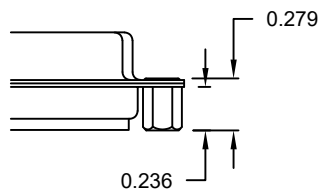
**TOLERANCE:**  
 ALL DIMENSIONS ARE  $\pm 0.010$   
 UNLESS OTHERWISE  
 SPECIFIED

ALL CLINCH-NUTS ARE 4-40 INTERNAL THREADS

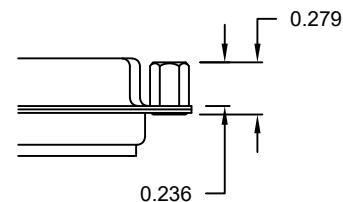
"01" // SOLDER SIDE



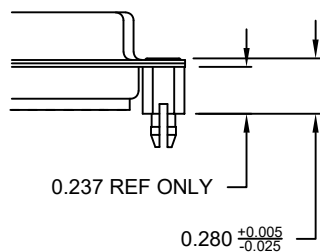
"02" // SOLDER SIDE



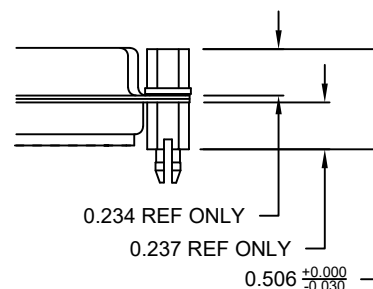
"03" // MATING SIDE



"05" // PCB SIDE



"91" // PCB SIDE



NOTE: 4-40 FEMALE SCREW LOCK IS REMOVABLE

RoHS COMPLIANT

UNITS = inch

DO NOT SCALE FROM DRAWING



THESE DRAWINGS AND SPECIFICATIONS ARE THE PROPERTY OF NorComp AND SHALL NOT BE REPRODUCED, COPIED OR USED AS THE BASIS FOR THE MANUFACTURE OR SALE OF APPARATUS WITHOUT WRITTEN PERMISSION.

DRAWN:  
 P. JENKINS

DATE:  
 08/24/1998

**NorComp**

SCALE:  
 NTS

SHEET OF  
 2 2

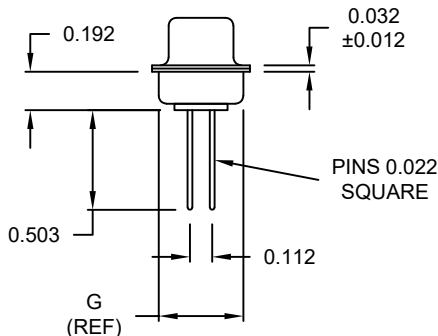
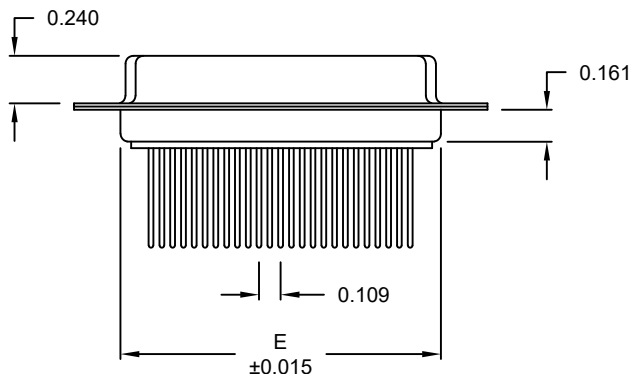
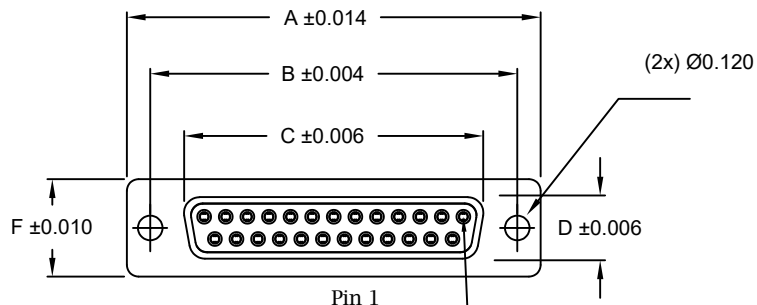
REV  
 15

DWG NO.

172-YYY-103RYY1

DIMENSIONS

No. OF PINS	UNITS	A	B	C	D	E	F	G
9	inch	1.213	0.984	0.642	0.315	0.760	0.496	0.423
	mm	30.80	24.99	16.30	8.00	19.30	12.60	10.75
15	inch	1.541	1.312	0.969	0.315	1.083	0.496	0.423
	mm	39.15	33.32	24.60	8.00	27.51	12.60	10.75
25	inch	2.088	1.852	1.512	0.315	1.630	0.496	0.423
	mm	53.04	47.04	38.40	8.00	41.40	12.60	10.75
37	inch	2.729	2.500	2.157	0.315	2.276	0.496	0.423
	mm	69.32	63.50	54.80	8.00	57.81	12.60	10.75
50	inch	2.635	2.406	2.059	0.425	2.182	0.598	0.524
	mm	66.93	61.11	52.30	10.80	55.42	15.20	13.30



172-YYY-243RYY1

SERIES \_\_\_\_\_  
 POSITIONS \_\_\_\_\_  
 009 \_\_\_\_\_  
 015 \_\_\_\_\_  
 025 \_\_\_\_\_  
 037 \_\_\_\_\_  
 050 \_\_\_\_\_  
 GENDER \_\_\_\_\_  
 2 = FEMALE  
 TERMINATION \_\_\_\_\_  
 4 = WIRE WRAP  
 SHELL PLATING \_\_\_\_\_  
 3 = NICKEL  
 HARDWARE OPTIONS \_\_\_\_\_  
 00 = NO HARDWARE  
 01 = .098" CLINCH NUT (PCB SIDE)  
 02 = .236" CLINCH NUT (PCB SIDE)  
 03 = .236" CLINCH NUT (MATING SIDE)  
 05 = .237" 4-40 BOARD LOCK  
 91 = .237" 4-40 SPACER/ BOARD LOCK  
 PLATING OPTIONS \_\_\_\_\_  
 1 = GOLD FLASH  
 2 = 30MICRO-INCH GOLD

MATERIAL:

SHELL: STEEL, NICKEL PLATED  
 INSULATOR: PA6T, UL94 V-0  
 PROCESS TEMP.: 260°C  
 CONTACT: BRASS

ELECTRICAL:

CURRENT RATING: 5 AMPS  
 CONTACT RESISTANCE: 15 mOhms Max.  
 INSULATION RESISTANCE: 1,000 MOhms Min.  
 VOLTAGE: 500VAC FOR 1 MINUTE  
 TEMPERATURE: -50° C TO 100° C

UNITS = inch

DO NOT SCALE FROM DRAWING



THESE DRAWINGS AND SPECIFICATIONS ARE THE PROPERTY OF NorComp AND SHALL NOT BE REPRODUCED, COPIED OR USED AS THE BASIS FOR THE MANUFACTURE OR SALE OF APPARATUS WITHOUT WRITTEN PERMISSION.

DRAWN:  
P. JENKINS

DATE:  
09/12/2005

NorComp

SCALE:  
NTS

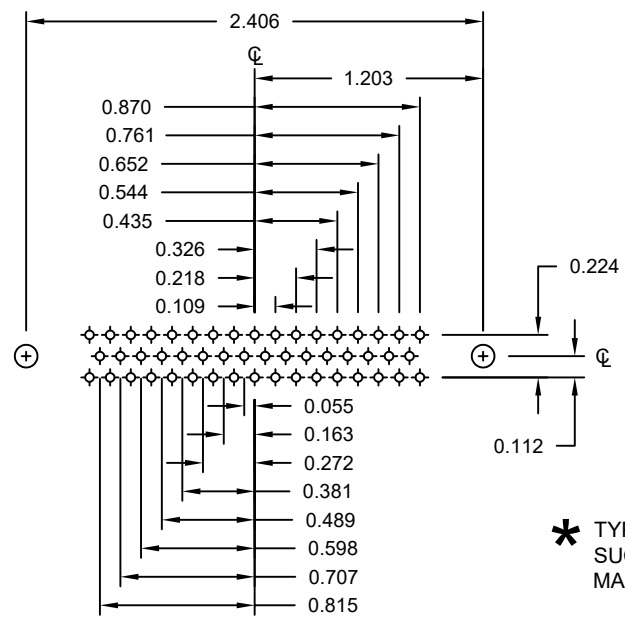
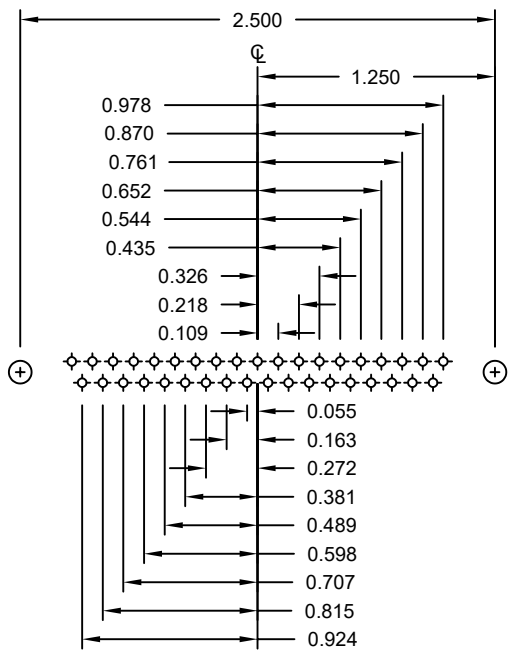
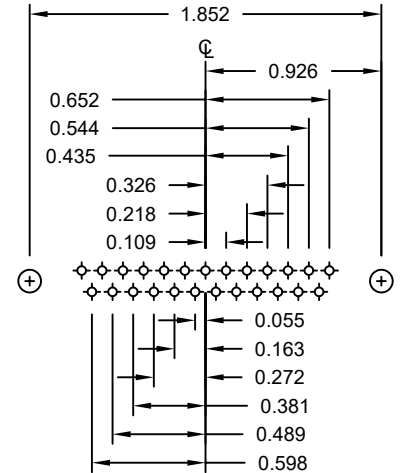
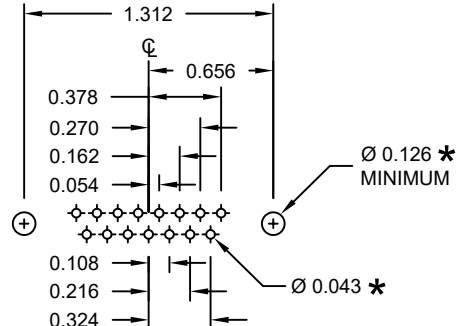
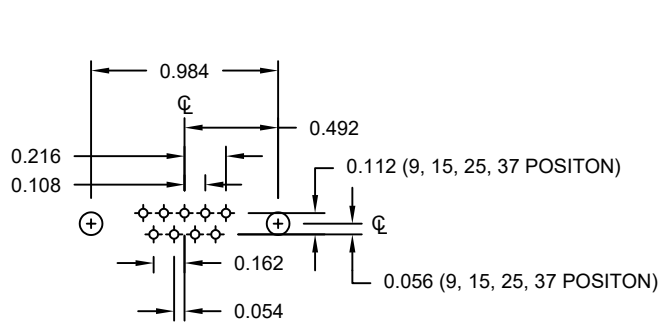
SHEET OF  
1 3

REV  
15

DWG NO.

172-YYY-243RYY1

RoHS COMPLIANT



\* TYP. SUGGESTED SIZE MAY NOT BE SUITABLE FOR ALL APPLICATIONS

RoHS COMPLIANT

UNITS = inch

DO NOT SCALE FROM DRAWING



THESE DRAWINGS AND SPECIFICATIONS ARE THE PROPERTY OF NorComp AND SHALL NOT BE REPRODUCED, COPIED OR USED AS THE BASIS FOR THE MANUFACTURE OR SALE OF APPARATUS WITHOUT WRITTEN PERMISSION.

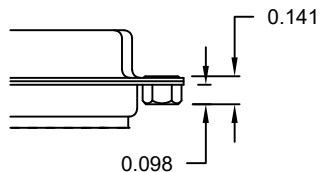
DRAWN: P. JENKINS  
DATE: 09/12/2005

NorComp

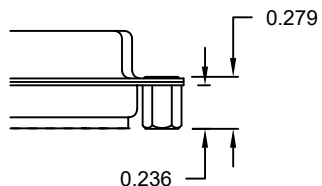
SCALE: NTS	SHEET 2 OF 3	REV 15
DWG NO. 172-YYY-243RYY1		

ALL CLINCH-NUTS ARE 4-40 INTERNAL THREADS

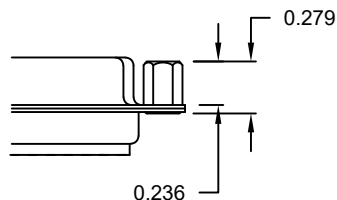
01X ..... 0.098" (PCB SIDE)



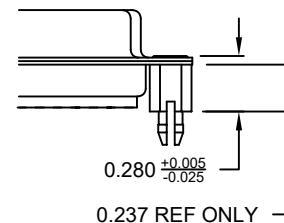
02X ..... 0.236" (PCB SIDE)



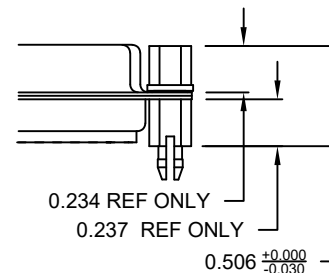
03X..... 0.236" (MATING SIDE)



05X ..... 0.237" (BOARD SIDE)



91X ..... 0.237" (BOARD SIDE)



**TOLERANCE:**  
ALL DIMENSIONS ARE  $\pm 0.010$   
UNLESS OTHERWISE  
SPECIFIED

NOTE: 4-40 FEMALE SCREW LOCK IS REMOVABLE

RoHS COMPLIANT

UNITS = inch

DO NOT SCALE FROM DRAWING



THESE DRAWINGS AND SPECIFICATIONS ARE THE PROPERTY OF NorComp AND SHALL NOT BE REPRODUCED, COPIED OR USED AS THE BASIS FOR THE MANUFACTURE OR SALE OF APPARATUS WITHOUT WRITTEN PERMISSION.

DRAWN:  
P. JENKINS

DATE:  
09/12/2005

NorComp

SCALE:  
NTS

SHEET 3 OF 3

REV 15

DWG NO.

172-YYY-243RYY1