



Product Change Notification / SYST-22CUWH413

SYST-22CUWH413

Microchip has released a new Datasheet for the DSC60xxB - Ultra-Small, Ultra-Low Power MEMS Oscillator of devices. If you are using one of these devices please read the document located at [DSC60xxB - Ultra-Small, Ultra-Low Power MEMS Oscillator](#).

Notification Status: Final

Description of Change:

1. Added the 7.0 mm x 5.0 mm VDFN, 5.0 mm x 3.2 mm VDFN, and 3.2 mm x 2.5 mm VDFN package options throughout the document.
2. Updated the previously existing package outline drawings to their most current versions.

Impacts to Data Sheet: None

Reason for Change: To Improve Productivity

Change Implementation Status: Complete

Date Document Changes Effective: 24 Nov 2022

NOTE: Please be advised that this is a change to the document only the product has not been changed.

Markings to Distinguish Revised from Unrevised Devices: N/A

Date

24-Nov-2022

PCN Type

Document Change

PCN

SYST-22CUWH413

Title

Data Sheet - DSC60xxB - Ultra-Small, Ultra-Low Power MEMS Oscillator

Product Category

Clock and Timing - Oscillators

Affected CPNs

[SYST-22CUWH413 Affected CPN 11242022.pdf](#)

[SYST-22CUWH413 Affected CPN 11242022.csv](#)

Attachments

[DSC60xxB - Ultra-Small, Ultra-Low Power MEMS Oscillator](#)

Please contact your local [Microchip sales office](#) with questions or concerns regarding this notification.

Terms and Conditions:

If you wish to [receive Microchip PCNs via email](#) please register for our PCN email service at our [PCN home page](#) select register then fill in the required fields. You will find instructions about registering for Microchips PCN email service in the [PCN FAQ](#) section.

If you wish to [change your PCN profile, including opt out](#), please go to the [PCN home page](#) select login and sign into your myMicrochip account. Select a profile option from the left navigation bar and make the applicable selections.



Affected Catalog Part Numbers (CPN)

DSC6003HA3B-016.0000
DSC6011HA2B-029.4912
DSC6001HA3B-PROG
DSC6003HA3B-PROG
DSC6003HA1B-020.0000
DSC6001HA2B-029.4912
DSC6021HA3B-01D0
DSC6003HA3B-032K768
DSC6011HA1B-032K768
DSC6011HA2B-032K768
DSC6011HA2B-025.0000
DSC6011HA2B-008.0000
DSC6013HA2B-048.0000
DSC6001MA2B-020.0000
DSC6003MA3B-032K768
DSC6001MA3B-PROG
DSC6003MA3B-PROG
DSC6023MA1B-015S
DSC6011MA3B-006K000
DSC6011MA3B-022K000
DSC6011MA3B-002K000
DSC6011MA3B-020.0000
DSC6011MA1B-032K768
DSC6011MA3B-025.0000
DSC6001JA3B-020.0000
DSC6001JA3B-PROG
DSC6003JA3B-PROG
DSC6001JA3B-580K000
DSC6021JA2B-01AR
DSC6011JA3B-016K384
DSC6001JA2B-016.0000
DSC6011JA1B-040.0000
DSC6001HI2B-012.0000
DSC6001HI2B-024.0000
DSC6003HI2B-012.0000
DSC6001HI3B-032K768
DSC6003HI3B-010.0000
DSC6003HI2B-025.0000
DSC6003HI2B-024.0000
DSC6011HI2B-002K000
DSC6011HI2B-032K768
DSC6011HI2B-250K000
DSC6011HI2B-432K000
DSC6011HI2B-720K000
DSC6013HI2B-001.0000
DSC6013HI2B-002K000

DSC6013HI2B-032K768
DSC6013HI2B-250K000
DSC6013HI2B-432K000
DSC6013HI2B-720K000
DSC6001HI2B-048.0000
DSC6003HI3B-027.0000
DSC6013HI2B-003.6864
DSC6021HI3B-016R
DSC6001HI2B-006.0000
DSC6001HI2B-008.0000
DSC6011HI1B-016.0000
DSC6011HI1B-024.0000
DSC6011HI1B-025.0000
DSC6011HI1B-009.6000
DSC6021HI2B-018E
DSC6011HI3B-064.0128
DSC6013HI3B-064.0128
DSC6003HI2B-019.2000
DSC6001HI1B-020.0000
DSC6001HI1B-032.7680
DSC6013HI3B-409K600
DSC6011HI3B-048.0000
DSC6011HI3B-032K000
DSC6001HI2B-018.4320
DSC6041HI2B-025.0000
DSC6041HI2B-027.0000
DSC6011HI2B-025.0000
DSC6011HI2B-027.0000
DSC6001HI2B-025.0000
DSC6001HI1B-025.0000
DSC6011HI1B-012.0000
DSC6003HI2B-745K000
DSC6001HI2B-004.0960
DSC6001HI2B-032.0000
DSC6001HI2B-003.5900
DSC6003HI2B-048.0000
DSC6013HI2B-048.0000
DSC6051HI2B-012.0000
DSC6003HI3B-032K768
DSC6011HI2B-012.0000
DSC6061HI1B-01MC
DSC6003HI1B-720K000
DSC6001MI2B-012.2880
DSC6003MI2B-014.0000
DSC6003MI2B-026.0000
DSC6001MI3B-004.0960
DSC6011MI2B-025.0000
DSC6011MI2B-056.0000
DSC6003MI3B-032K768

DSC6003MI3B-012.0000
DSC6003MI2B-027.0000
DSC6011MI1B-007.3728
DSC6001MI3B-032K768
DSC6003MI2B-080.0000
DSC6003MI2B-032K768
DSC6003MI2B-050.0000
DSC6001MI2B-007.3728
DSC6001MI1B-007.3728
DSC6011MI2B-007.3728
DSC6021MI1B-01B1
DSC6001MI1B-032K768
DSC6001MI2B-032K768
DSC6001MI2B-027.0000
DSC6001MI2B-032.7680
DSC6011MI3B-048.0000
DSC6011MI2B-004.0960
DSC6011MI3B-032.0000
DSC6001MI1B-080.0000
DSC6011MI2B-024.0000
DSC6011MI2B-006K144
DSC6011MI3B-025.0000
DSC6021MI2B-01K2
DSC6001MI1B-008.0000
DSC6003JI2B-001.0000
DSC6003JI2B-003.5700
DSC6001JI3B-008.0000
DSC6001JI3B-024.5760
DSC6003JI2B-012.0000
DSC6011JI2B-002K000
DSC6011JI2B-032K768
DSC6011JI2B-250K000
DSC6011JI2B-432K000
DSC6011JI2B-720K000
DSC6013JI2B-001.0000
DSC6013JI2B-032K768
DSC6013JI2B-250K000
DSC6013JI2B-432K000
DSC6013JI2B-720K000
DSC6011JI1B-012.0000
DSC6011JI3B-025.0000
DSC6013JI1B-032.7680
DSC6013JI1B-008.0000
DSC6001JI3B-439K000
DSC6011JI1B-025.0000
DSC6013JI1B-025.0000
DSC6011JI2B-025.0000
DSC6001JI2B-025.0000
DSC6001JI2B-027.0000

DSC6001JI1B-025.0000
DSC6011JI1B-008.0000
DSC6011JI3B-001.0640
DSC6001JI3B-004K000
DSC6011JI3B-032K768
DSC6013JI1B-768K000
DSC6001JI1B-460K800
DSC6001JI2B-001.8432
DSC6011JI2B-012.0000
DSC6003JI2B-025.0000
DSC6011JI1B-050.0000
DSC6001JI2B-116K000
DSC6001JI2B-068.1818
DSC6013JI1B-012.0000
DSC6001JI1B-012.0000
DSC6001JI2B-032K000
DSC6001JI3B-024.0000
DSC6003JI2B-032K768
DSC6023JI3B-019H
DSC6011JI1B-014.7456
DSC6003JI2B-004.5160
DSC6003JI2B-008.0000
DSC6003JI2B-027.0950
DSC6003JI2B-063.2220
DSC6011JI2B-016.0000
DSC6013JI1B-032K768
DSC6001JI3B-014.1875
DSC6013JI3B-032.0000
DSC6001JI2B-024.0000
DSC6003JI2B-024.0000
DSC6013JI1B-300K000
DSC6001JI1B-032K768
DSC6003JI2B-307K000
DSC6001JI2B-032K768
DSC6001JI2B-012.2880
DSC6011JI3B-048K500
DSC6001JI1B-010.0000
DSC6011JI1B-001.0000
DSC6001JI3B-025.0000
DSC6001JI2B-022.5792
DSC6011JI2B-024.0000
DSC6003JI2B-050.0000
DSC6011JI2B-018.0000
DSC6013JI2B-050.0000
DSC6001JI1B-027.0000
DSC6021JI2B-01G3
DSC6001JI1B-020.0000
DSC6051JI2B-014.3180
DSC6011JI1B-006.5536

DSC6011JI3B-012.0000
DSC6051JI3B-032K768
DSC6001JI3B-032K768
DSC6001JI2B-012.0000
DSC6011JI2B-008.0000
DSC6001JI2B-007.3730
DSC6021JI1B-01H4
DSC6001JI3B-005K280
DSC6001JI3B-004K280
DSC6021JI1B-01HA
DSC6003JI1B-100K000
DSC6011JI1B-003.6864
DSC6021JI2B-01HM
DSC6001JI1B-024.0000
DSC6001JI1B-040.0000
DSC6001JI2B-042.5000
DSC6021JI2B-01J5
DSC6013JI2B-004.0960
DSC6001JI1B-008K000
DSC6011JI1B-024.0000
DSC6021JI2B-01KQ
DSC6003JI2B-019.2000
DSC6001JI1B-008.0000
DSC6001JI2B-008.0000
DSC6011JI3B-020.0000
DSC6001JI1B-006.5536
DSC6001JI2B-016.0000
DSC6013JI2B-012.0000
DSC6003JI2B-120K000
DSC6011JI2B-050.0000
DSC6011JI2B-010.0000
DSC6003JI2B-016.0000
DSC6001JI2B-006.1440
DSC6013JI1B-033.3300
DSC6011JI2B-048.0000
DSC6011JI2B-026.0000
DSC6011JI2B-004.0000
DSC6011JI2B-080.0000
DSC6003JI2B-048.0000
DSC6011JI2B-019.2000
DSC6011JI2B-027.0000
DSC6011JI2B-012.2880
DSC6011JI2B-032.0000
DSC6011JI2B-040.0000
DSC6003JI1B-020.0000
DSC6001HL2B-026.0000
DSC6003HL2B-024.0000
DSC6003HL3B-014.0000
DSC6003HL3B-032K768

DSC6041HL2B-009.8460
DSC6013HE1B-032K768
DSC6021HE3B-0157
DSC6023HE3B-015C
DSC6023HE3B-015D
DSC6011HE1B-084K000
DSC6013HE2B-084K000
DSC6001HE1B-011.0592
DSC6001HE3B-027.1200
DSC6011HE2B-050.0000
DSC6021HE2B-01AB
DSC6011HL3B-003.0720
DSC6001HL2B-009.8460
DSC6001HL2B-012.0000
DSC6011HE2B-008.7040
DSC6001HE2B-015.0000
DSC6053HE1B-006.2500
DSC6013HE2B-048.0000
DSC6013HL2B-048.0000
DSC6001HE1B-001.0000
DSC6001HE1B-008.0000
DSC6011HE2B-064.0000
DSC6001ML3B-026.0000
DSC6003ML3B-008.1920
DSC6011ME2B-050.0000
DSC6003ML2B-032K768
DSC6021ML3B-015R
DSC6001ML2B-040.0000
DSC6001ML2B-025.0000
DSC6001ME1B-050.0000
DSC6001ME1B-075.0000
DSC6011ML3B-003.0720
DSC6003ME1B-013.1072
DSC6001ME2B-009.0000
DSC6001ME1B-052.4280
DSC6001ME1B-008.0000
DSC6001JL2B-027.0000
DSC6003JL3B-004.0096
DSC6003JL3B-007.3728
DSC6001JE1B-024.0000
DSC6003JE1B-024.0000
DSC6011JE2B-032K768
DSC6003JL2B-032K768
DSC6011JE1B-025.0000
DSC6011JL2B-025.0000
DSC6011JE3B-003K898
DSC6001JE1B-025.0000
DSC6011JE1B-840K000
DSC6001JE3B-040K000

DSC6001JE2B-013.5600
DSC6021JE1B-0193
DSC6001JL3B-032.7680
DSC6011JL2B-032K768
DSC6021JE1B-01B4
DSC6003JE2B-032K768
DSC6001JL3B-025.0000
DSC6001JL2B-006.0053
DSC6001JE2B-024.0000
DSC6001JE3B-024.0000
DSC6001JE2B-025.0000
DSC6023JE1B-01D6
DSC6021JE1B-01D7
DSC6023JE1B-01D8
DSC6021JE1B-01D9
DSC6023JE1B-01DS
DSC6023JE1B-01DV
DSC6021JE1B-01EA
DSC6001JL1B-025K600
DSC6021JE3B-01GB
DSC6021JL1B-01HB
DSC6001JE1B-052.0000
DSC6011JE1B-027.0000
DSC6011JE1B-024.0000
DSC6001JE1B-020.0000
DSC6023JL3B-01SH
DSC6001JL3B-008.0000
DSC6001HL2B-026.0000T
DSC6003HL2B-024.0000T
DSC6003HL3B-014.0000T
DSC6003HL3B-032K768T
DSC6041HL2B-009.8460T
DSC6013HE1B-032K768T
DSC6021HE3B-0157T
DSC6023HE3B-015CT
DSC6023HE3B-015DT
DSC6011HE1B-084K000T
DSC6013HE2B-084K000T
DSC6001HE1B-011.0592T
DSC6001HE3B-027.1200T
DSC6011HE2B-050.0000T
DSC6021HE2B-01ABT
DSC6011HL3B-003.0720T
DSC6001HL2B-009.8460T
DSC6001HL2B-012.0000T
DSC6011HE2B-008.7040T
DSC6001HE2B-015.0000T
DSC6053HE1B-006.2500T
DSC6013HE2B-048.0000T

DSC6013HL2B-048.0000T
DSC6001HE1B-001.0000T
DSC6001HE1B-008.0000T
DSC6011HE2B-064.0000T
DSC6001ML3B-026.0000T
DSC6003ML3B-008.1920T
DSC6011ME2B-050.0000T
DSC6003ML2B-032K768T
DSC6021ML3B-015RT
DSC6001ML2B-040.0000T
DSC6001ML2B-025.0000T
DSC6001ME1B-050.0000T
DSC6001ME1B-075.0000T
DSC6011ML3B-003.0720T
DSC6003ME1B-013.1072T
DSC6001ME2B-009.0000T
DSC6001ME1B-052.4280T
DSC6001ME1B-008.0000T
DSC6001JL2B-027.0000T
DSC6003JL3B-004.0096T
DSC6003JL3B-007.3728T
DSC6001JE1B-024.0000T
DSC6003JE1B-024.0000T
DSC6011JE2B-032K768T
DSC6003JL2B-032K768T
DSC6011JE1B-025.0000T
DSC6011JL2B-025.0000T
DSC6011JE3B-003K898T
DSC6001JE1B-025.0000T
DSC6011JE1B-840K000T
DSC6001JE3B-040K000T
DSC6001JE2B-013.5600T
DSC6021JE1B-0193T
DSC6001JL3B-032.7680T
DSC6011JL2B-032K768T
DSC6021JE1B-01B4T
DSC6003JE2B-032K768T
DSC6001JL3B-025.0000T
DSC6001JL2B-006.0053T
DSC6001JE2B-024.0000T
DSC6001JE3B-024.0000T
DSC6001JE2B-025.0000T
DSC6023JE1B-01D6T
DSC6021JE1B-01D7T
DSC6023JE1B-01D8T
DSC6021JE1B-01D9T
DSC6023JE1B-01DST
DSC6023JE1B-01DVT
DSC6021JE1B-01EAT

DSC6001JL1B-025K600T
DSC6021JE3B-01GBT
DSC6021JL1B-01HBT
DSC6001JE1B-052.0000T
DSC6011JE1B-027.0000T
DSC6011JE1B-024.0000T
DSC6001JE1B-020.0000T
DSC6023JL3B-01SHT
DSC6001JL3B-008.0000T
DSC6001HI2B-012.0000T
DSC6001HI2B-024.0000T
DSC6003HI2B-012.0000T
DSC6001HI3B-032K768T
DSC6003HI3B-010.0000T
DSC6003HI2B-025.0000T
DSC6003HI2B-024.0000T
DSC6011HI2B-002K000T
DSC6011HI2B-032K768T
DSC6011HI2B-250K000T
DSC6011HI2B-432K000T
DSC6011HI2B-720K000T
DSC6013HI2B-001.0000T
DSC6013HI2B-002K000T
DSC6013HI2B-032K768T
DSC6013HI2B-250K000T
DSC6013HI2B-432K000T
DSC6013HI2B-720K000T
DSC6001HI2B-048.0000T
DSC6003HI3B-027.0000T
DSC6013HI2B-003.6864T
DSC6021HI3B-016RT
DSC6001HI2B-006.0000T
DSC6001HI2B-008.0000T
DSC6011HI1B-016.0000T
DSC6011HI1B-024.0000T
DSC6011HI1B-025.0000T
DSC6011HI1B-009.6000T
DSC6021HI2B-018ET
DSC6011HI3B-064.0128T
DSC6013HI3B-064.0128T
DSC6003HI2B-019.2000T
DSC6001HI1B-020.0000T
DSC6001HI1B-032.7680T
DSC6013HI3B-409K600T
DSC6011HI3B-048.0000T
DSC6011HI3B-032K000T
DSC6001HI2B-018.4320T
DSC6041HI2B-025.0000T
DSC6041HI2B-027.0000T

DSC6011HI2B-025.0000T
DSC6011HI2B-027.0000T
DSC6001HI2B-025.0000T
DSC6001HI1B-025.0000T
DSC6011HI1B-012.0000T
DSC6003HI2B-745K000T
DSC6001HI2B-004.0960T
DSC6001HI2B-032.0000T
DSC6001HI2B-003.5900T
DSC6003HI2B-048.0000T
DSC6013HI2B-048.0000T
DSC6051HI2B-012.0000T
DSC6003HI3B-032K768T
DSC6011HI2B-012.0000T
DSC6061HI1B-01MCT
DSC6003HI1B-720K000T
DSC6001MI2B-012.2880T
DSC6003MI2B-014.0000T
DSC6003MI2B-026.0000T
DSC6001MI3B-004.0960T
DSC6011MI2B-025.0000T
DSC6011MI2B-056.0000T
DSC6003MI3B-032K768T
DSC6003MI3B-012.0000T
DSC6003MI2B-027.0000T
DSC6011MI1B-007.3728T
DSC6001MI3B-032K768T
DSC6003MI2B-080.0000T
DSC6003MI2B-032K768T
DSC6003MI2B-050.0000T
DSC6001MI2B-007.3728T
DSC6001MI1B-007.3728T
DSC6011MI2B-007.3728T
DSC6021MI1B-01B1T
DSC6001MI1B-032K768T
DSC6001MI2B-032K768T
DSC6001MI2B-027.0000T
DSC6001MI2B-032.7680T
DSC6011MI3B-048.0000T
DSC6011MI2B-004.0960T
DSC6011MI3B-032.0000T
DSC6001MI1B-080.0000T
DSC6011MI2B-024.0000T
DSC6011MI2B-006K144T
DSC6011MI3B-025.0000T
DSC6021MI2B-01K2T
DSC6001MI1B-008.0000T
DSC6011MI2B-032.0000T
DSC6011MI2B-020.0000T

DSC6011MI2B-026.0000T
DSC6011MI2B-048.0000T
DSC6011MI2B-016.0000T
DSC6011MI2B-010.0000T
DSC6011MI2B-008.0000T
DSC6011MI2B-012.2880T
DSC6011MI2B-019.2000T
DSC6003JI2B-001.0000T
DSC6003JI2B-003.5700T
DSC6001JI3B-008.0000T
DSC6001JI3B-024.5760T
DSC6003JI2B-012.0000T
DSC6011JI2B-002K000T
DSC6011JI2B-032K768T
DSC6011JI2B-250K000T
DSC6011JI2B-432K000T
DSC6011JI2B-720K000T
DSC6013JI2B-001.0000T
DSC6013JI2B-032K768T
DSC6013JI2B-250K000T
DSC6013JI2B-432K000T
DSC6013JI2B-720K000T
DSC6011JI1B-012.0000T
DSC6011JI3B-025.0000T
DSC6013JI1B-032.7680T
DSC6013JI1B-008.0000T
DSC6001JI3B-439K000T
DSC6011JI1B-025.0000T
DSC6013JI1B-025.0000T
DSC6011JI2B-025.0000T
DSC6001JI2B-025.0000T
DSC6001JI2B-027.0000T
DSC6001JI1B-025.0000T
DSC6011JI1B-008.0000T
DSC6011JI3B-001.0640T
DSC6001JI3B-004K000T
DSC6011JI3B-032K768T
DSC6013JI1B-768K000T
DSC6001JI1B-460K800T
DSC6001JI2B-001.8432T
DSC6011JI2B-012.0000T
DSC6003JI2B-025.0000T
DSC6011JI1B-050.0000T
DSC6001JI2B-116K000T
DSC6001JI2B-068.1818T
DSC6013JI1B-012.0000T
DSC6001JI1B-012.0000T
DSC6001JI2B-032K000T
DSC6001JI3B-024.0000T

DSC6003JI2B-032K768T
DSC6023JI3B-019HT
DSC6011JI1B-014.7456T
DSC6003JI2B-004.5160T
DSC6003JI2B-008.0000T
DSC6003JI2B-027.0950T
DSC6003JI2B-063.2220T
DSC6011JI2B-016.0000T
DSC6013JI1B-032K768T
DSC6001JI3B-014.1875T
DSC6013JI3B-032.0000T
DSC6001JI2B-024.0000T
DSC6003JI2B-024.0000T
DSC6013JI1B-300K000T
DSC6001JI1B-032K768T
DSC6003JI2B-307K000T
DSC6001JI2B-032K768T
DSC6001JI2B-012.2880T
DSC6011JI3B-048K500T
DSC6001JI1B-010.0000T
DSC6011JI1B-001.0000T
DSC6001JI3B-025.0000T
DSC6001JI2B-022.5792T
DSC6011JI2B-024.0000T
DSC6003JI2B-050.0000T
DSC6011JI2B-018.0000T
DSC6013JI2B-050.0000T
DSC6001JI1B-027.0000T
DSC6021JI2B-01G3T
DSC6001JI1B-020.0000T
DSC6051JI2B-014.3180T
DSC6011JI1B-006.5536T
DSC6011JI3B-012.0000T
DSC6051JI3B-032K768T
DSC6001JI3B-032K768T
DSC6001JI2B-012.0000T
DSC6011JI2B-008.0000T
DSC6001JI2B-007.3730T
DSC6021JI1B-01H4T
DSC6001JI3B-005K280T
DSC6001JI3B-004K280T
DSC6021JI1B-01HAT
DSC6003JI1B-100K000T
DSC6011JI1B-003.6864T
DSC6021JI2B-01HMT
DSC6001JI1B-024.0000T
DSC6001JI1B-040.0000T
DSC6001JI2B-042.5000T
DSC6021JI2B-01J5T

DSC6013JI2B-004.0960T
DSC6001JI1B-008K000T
DSC6011JI1B-024.0000T
DSC6021JI2B-01KQT
DSC6003JI2B-019.2000T
DSC6001JI1B-008.0000T
DSC6001JI2B-008.0000T
DSC6011JI3B-020.0000T
DSC6001JI1B-006.5536T
DSC6001JI2B-016.0000T
DSC6013JI2B-012.0000T
DSC6003JI2B-120K000T
DSC6011JI2B-050.0000T
DSC6011JI2B-010.0000T
DSC6003JI2B-016.0000T
DSC6001JI2B-006.1440T
DSC6013JI1B-033.3300T
DSC6011JI2B-048.0000T
DSC6011JI2B-026.0000T
DSC6011JI2B-004.0000T
DSC6011JI2B-080.0000T
DSC6003JI2B-048.0000T
DSC6011JI2B-019.2000T
DSC6011JI2B-027.0000T
DSC6011JI2B-012.2880T
DSC6011JI2B-032.0000T
DSC6011JI2B-040.0000T
DSC6003JI1B-020.0000T
DSC6003HA3B-016.0000T
DSC6011HA2B-029.4912T
DSC6001HA3B-PROGT
DSC6003HA3B-PROGT
DSC6003HA1B-020.0000T
DSC6001HA2B-029.4912T
DSC6021HA3B-01D0T
DSC6003HA3B-032K768T
DSC6011HA1B-032K768T
DSC6011HA2B-032K768T
DSC6011HA2B-025.0000T
DSC6011HA2B-008.0000T
DSC6013HA2B-048.0000T
DSC6001MA2B-020.0000T
DSC6003MA3B-032K768T
DSC6001MA3B-PROGT
DSC6003MA3B-PROGT
DSC6023MA1B-015ST
DSC6011MA3B-006K000T
DSC6011MA3B-022K000T
DSC6011MA3B-002K000T

DSC6011MA3B-020.0000T
DSC6011MA1B-032K768T
DSC6011MA3B-025.0000T
DSC6001JA3B-020.0000T
DSC6001JA3B-PROGT
DSC6003JA3B-PROGT
DSC6001JA3B-580K000T
DSC6021JA2B-01ART
DSC6011JA3B-016K384T
DSC6001JA2B-016.0000T
DSC6011JA1B-040.0000T
DSC6011HA1B-016.0000
DSC6001HA3B-029.4912
DSC6003MA3B-032.0000
DSC6003MA3B-080.0000
DSC6003JA3B-016.7772
DSC6011JA2B-008.0000
DSC6001JA1B-009.9000
DSC6041JA3B-001.0240
DSC6001JA2B-025.0000
DSC6011JA2B-075K000
DSC6043JA3B-127K000
DSC6011JA1B-008.0000
DSC6021JA1B-01WY
DSC6021JA1B-01Y0
DSC6003JA3B-020K000
DSC6001JA3B-024.0000
DSC6001CI2B-016.0000
DSC6001CA3B-PROG
DSC6003CA3B-PROG
DSC6003BA1B-080.0000
DSC6001BA3B-PROG
DSC6003BA3B-PROG
DSC6053HI3B-048.0000
DSC6001HI2B-038.4000
DSC6001HI1B-005.0000
DSC6003HI1B-745K000
DSC6011HI1B-004.0000
DSC6001HI1B-006.7800
DSC6053HI3B-064.0128
DSC6001HI2B-012.2880
DSC6011HI2B-024.0000
DSC6011HI2B-012.2880
DSC6011HI2B-048.0000
DSC6011HI2B-032.0000
DSC6001HI2B-032K768
DSC6001HI2B-002.0800
DSC6011HI2B-019.2000
DSC6011HI2B-008.0000

DSC6011HI2B-050.0000
DSC6013HI2B-024.0000
DSC6013HI2B-012.0000
DSC6011HI2B-005.0000
DSC6011HI2B-016.0000
DSC6003HI2B-027.0000
DSC6011HI2B-010.0000
DSC6001HI1B-024.0000
DSC6051HI1B-050.0000
DSC6001HI2B-011.0592
DSC6011HI2B-026.0000
DSC6001HI2B-005.0000
DSC6021HI2B-01UA
DSC6011HI2B-004.0000
DSC6011MI1B-012.2880
DSC6001MI3B-026.0000
DSC6001MI1B-024.5760
DSC6011MI1B-050.0000
DSC6041MI3B-039.3216
DSC6011MI3B-039.3216
DSC6003MI3B-026.0000
DSC6003MI1B-350K000
DSC6011MI2B-032.0000
DSC6011MI2B-020.0000
DSC6011MI2B-026.0000
DSC6011MI2B-048.0000
DSC6011MI2B-016.0000
DSC6011MI2B-010.0000
DSC6011MI2B-008.0000
DSC6011MI2B-012.2880
DSC6011MI2B-019.2000
DSC6011MI2B-050.0000
DSC6011MI2B-004.0000
DSC6011MI2B-012.0000
DSC6011MI2B-027.0000
DSC6011MI2B-033.0000
DSC6011MI2B-040.0000
DSC6011MI2B-080.0000
DSC6023MI2B-01TP
DSC6001MI2B-016.6660
DSC6001MI1B-025.0000
DSC6021MI2B-01UA
DSC6011MI2B-014.7456
DSC6013MI1B-027.0000
DSC6001MI2B-066.5600
DSC6001JI3B-259K200
DSC6001JI2B-001.0000
DSC6003JI2B-250K000
DSC6001JI2B-012.1732

DSC6001JI3B-003K000
DSC6051JI3B-024.0000
DSC6051JI3B-050.0000
DSC6011JI3B-327K680
DSC6011JI2B-024.5760
DSC6003JI1B-350K000
DSC6011JI2B-064.0000
DSC6001JI2B-026.0000
DSC6051JI1B-008.0000
DSC6023JI1B-01SQ
DSC6001JI1B-016.0000
DSC6021JI2B-01ST
DSC6051JI2B-022.0000
DSC6023JI2B-01TP
DSC6003JI1B-012.0000
DSC6001JI2B-016.7772
DSC6011JI2B-020.0000
DSC6013JI1B-063.2200
DSC6021JI1B-01UJ
DSC6001JI1B-033.3333
DSC6021JI2B-01VB
DSC6021JI2B-01VE
DSC6023JI3B-01VH
DSC6043JI3B-127K000
DSC6003JI1B-004.0000
DSC6011JI3B-016.0000
DSC6001JI2B-058.9824
DSC6011JI1B-006.3220
DSC6001JI1B-035.0000
DSC6003JI2B-004.5000
DSC6003JI1B-004.5000
DSC6001JI3B-003K200
DSC6011JI2B-033.0000
DSC6001JI2B-020.0000
DSC6003JI3B-032K768
DSC6001JI1B-050.0000
DSC6011JI2B-512K000
DSC6001CI2B-040.0000
DSC6001HL3B-032K768
DSC6053HE3B-016.0000
DSC6053HE3B-008.0000
DSC6001HE1B-009K091
DSC6001HE1B-005.0000
DSC6001HE1B-016.0000
DSC6011ME2B-012.0000
DSC6011ME2B-016.0000
DSC6011ME1B-032K768
DSC6001ME1B-004.9152
DSC6003JL3B-004.0960T

DSC6001JE2B-016.0000
DSC6001JL1B-008.0000
DSC6003JL1B-008.0000
DSC6001JL1B-024.0000
DSC6001JL1B-025.0000
DSC6001JL3B-024.0000
DSC6001JE1B-048.0000
DSC6011JE1B-026.0000
DSC6001JE2B-001.5360
DSC6051JE2B-001.5360
DSC6001JE2B-012.0000
DSC6001JE3B-050.0000
DSC6051JE2B-001.0240
DSC6043JL3B-127K000
DSC6001JL1B-270K000
DSC6021JE1B-01W2
DSC6011JE1B-003.5800
DSC6001JE1B-066.6667
DSC6001JE2B-020.0000
DSC6001JE1B-116K000
DSC6001HL3B-032K768T
DSC6053HE3B-016.0000T
DSC6053HE3B-008.0000T
DSC6001HE1B-009K091T
DSC6001HE1B-005.0000T
DSC6001HE1B-016.0000T
DSC6011ME2B-012.0000T
DSC6011ME2B-016.0000T
DSC6011ME1B-032K768T
DSC6001ME1B-004.9152T
DSC6003JL3B-004.0960
DSC6001JE2B-016.0000T
DSC6001JL1B-008.0000T
DSC6003JL1B-008.0000T
DSC6001JL1B-024.0000T
DSC6001JL1B-025.0000T
DSC6001JL3B-024.0000T
DSC6001JE1B-048.0000T
DSC6011JE1B-026.0000T
DSC6001JE2B-001.5360T
DSC6051JE2B-001.5360T
DSC6001JE2B-012.0000T
DSC6001JE3B-050.0000T
DSC6051JE2B-001.0240T
DSC6043JL3B-127K000T
DSC6001JL1B-270K000T
DSC6021JE1B-01W2T
DSC6011JE1B-003.5800T
DSC6001JE1B-066.6667T

DSC6001JE2B-020.0000T
DSC6001JE1B-116K000T
DSC6053HI3B-048.0000T
DSC6001HI2B-038.4000T
DSC6001HI1B-005.0000T
DSC6003HI1B-745K000T
DSC6011HI1B-004.0000T
DSC6001HI1B-006.7800T
DSC6053HI3B-064.0128T
DSC6001HI2B-012.2880T
DSC6011HI2B-024.0000T
DSC6011HI2B-012.2880T
DSC6011HI2B-048.0000T
DSC6011HI2B-032.0000T
DSC6001HI2B-032K768T
DSC6001HI2B-002.0800T
DSC6011HI2B-019.2000T
DSC6011HI2B-008.0000T
DSC6011HI2B-050.0000T
DSC6013HI2B-024.0000T
DSC6013HI2B-012.0000T
DSC6011HI2B-005.0000T
DSC6011HI2B-016.0000T
DSC6003HI2B-027.0000T
DSC6011HI2B-010.0000T
DSC6001HI1B-024.0000T
DSC6051HI1B-050.0000T
DSC6001HI2B-011.0592T
DSC6011HI2B-026.0000T
DSC6001HI2B-005.0000T
DSC6021HI2B-01UAT
DSC6011HI2B-004.0000T
DSC6011MI2B-024.0000B
DSC6011MI1B-012.2880T
DSC6001MI3B-026.0000T
DSC6001MI1B-024.5760T
DSC6011MI1B-050.0000T
DSC6041MI3B-039.3216T
DSC6011MI3B-039.3216T
DSC6003MI3B-026.0000T
DSC6003MI1B-350K000T
DSC6011MI2B-050.0000T
DSC6011MI2B-004.0000T
DSC6011MI2B-012.0000T
DSC6011MI2B-027.0000T
DSC6011MI2B-033.0000T
DSC6011MI2B-040.0000T
DSC6011MI2B-080.0000T
DSC6023MI2B-01TPT

DSC6001MI2B-016.6660T
DSC6001MI1B-025.0000T
DSC6021MI2B-01UAT
DSC6011MI2B-014.7456T
DSC6013MI1B-027.0000T
DSC6001MI2B-066.5600T
DSC6011JI2B-012.0000B
DSC6001JI3B-259K200T
DSC6001JI2B-001.0000T
DSC6003JI2B-250K000T
DSC6001JI2B-012.1732T
DSC6001JI3B-003K000T
DSC6051JI3B-024.0000T
DSC6051JI3B-050.0000T
DSC6011JI3B-327K680T
DSC6011JI2B-024.5760T
DSC6003JI1B-350K000T
DSC6011JI2B-064.0000T
DSC6001JI2B-026.0000T
DSC6051JI1B-008.0000T
DSC6023JI1B-01SQT
DSC6001JI1B-016.0000T
DSC6021JI2B-01STT
DSC6051JI2B-022.0000T
DSC6023JI2B-01TPT
DSC6003JI1B-012.0000T
DSC6001JI2B-016.7772T
DSC6011JI2B-020.0000T
DSC6013JI1B-063.2200T
DSC6021JI1B-01UJT
DSC6001JI1B-033.3333T
DSC6021JI2B-01VBT
DSC6021JI2B-01VET
DSC6023JI3B-01VHT
DSC6043JI3B-127K000T
DSC6003JI1B-004.0000T
DSC6011JI3B-016.0000T
DSC6001JI2B-058.9824T
DSC6011JI1B-006.3220T
DSC6001JI1B-035.0000T
DSC6003JI2B-004.5000T
DSC6003JI1B-004.5000T
DSC6001JI3B-003K200T
DSC6011JI2B-033.0000T
DSC6001JI2B-020.0000T
DSC6003JI3B-032K768T
DSC6001JI1B-050.0000T
DSC6011JI2B-512K000T
DSC6001CI2B-040.0000T

DSC6011HA1B-016.0000T
DSC6001HA3B-029.4912T
DSC6003MA3B-032.0000T
DSC6003MA3B-080.0000T
DSC6003JA3B-016.7772T
DSC6011JA2B-008.0000T
DSC6001JA1B-009.9000T
DSC6041JA3B-001.0240T
DSC6001JA2B-025.0000T
DSC6011JA2B-075K000T
DSC6043JA3B-127K000T
DSC6011JA1B-008.0000T
DSC6021JA1B-01WYT
DSC6021JA1B-01Y0T
DSC6003JA3B-020K000T
DSC6001JA3B-024.0000T
DSC6001CI2B-016.0000T
DSC6001CI1B-008.0000T
DSC6001CA3B-PROGT
DSC6003CA3B-PROGT
DSC6003BA1B-080.0000T
DSC6003BA3B-PROGT
DSC6001BA3B-PROGT

Ultra-Small, Ultra-Low Power MEMS Oscillator

Features

- Wide Frequency Range: 2 kHz to 80 MHz
- Ultra-Low Power Consumption: 1.3 mA/1 μ A (Active/Standby)
- Ultra-Small Footprints
 - 1.6 mm x 1.2 mm VFLGA
 - 2.0 mm x 1.6 mm VFLGA
 - 2.5 mm x 2.0 mm VLGA
 - 3.2 mm x 2.5 mm VDFN
 - 5.0 mm x 3.2 mm VDFN
 - 7.0 mm x 5.0 mm VDFN
- Frequency Select Input Supports Two Pre-Defined Frequencies
- High Stability: ± 20 ppm, ± 25 ppm, ± 50 ppm
- Wide Temperature Range
 - Automotive: -40°C to $+125^{\circ}\text{C}$
 - Ext. Industrial: -40°C to $+105^{\circ}\text{C}$
 - Industrial: -40°C to $+85^{\circ}\text{C}$
 - Ext. Commercial: -20° to $+70^{\circ}\text{C}$
- Excellent Shock and Vibration Immunity
 - Qualified to MIL-STD-883
- High Reliability
 - 20x Better MTF Than Quartz Oscillators
- Supply Range of 1.71V to 3.63V
- Short Sample Lead Time: <2 weeks
- Lead Free & RoHS Compliant

Applications

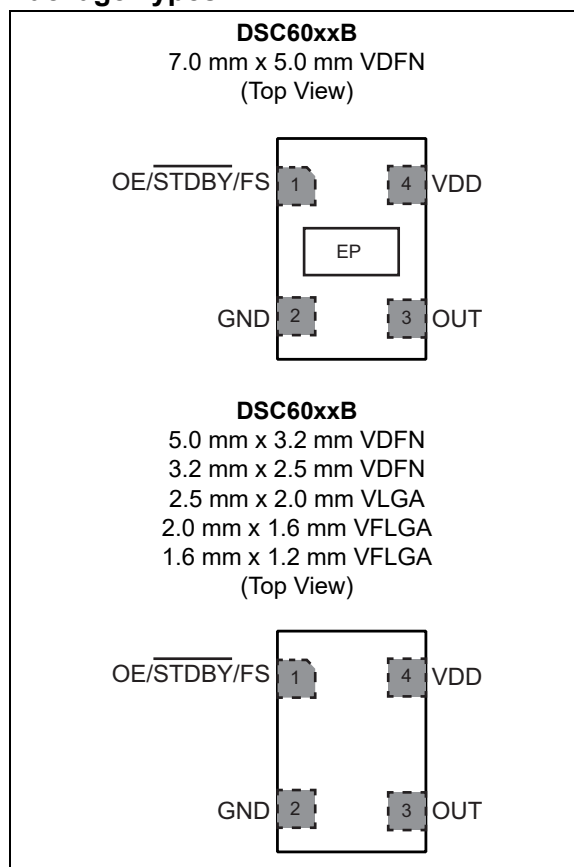
- Low Power/Portable Applications: IoT, Embedded/Smart Devices
- Consumer: Home Healthcare, Fitness Devices, Home Automation
- Automotive: Rear View/Surround View Cameras, Infotainment System (Please refer to DSA60xx Family)
- Industrial: Building/Factory Automation, Surveillance Camera

General Description

The DSC60xxB family of MEMS oscillators combines industry-leading low-power consumption, ultra-small packages with exceptional frequency stability, and jitter performance over temperature. The single-output DSC60xxB MEMS oscillators are excellent choices for use as clock references in small, battery-powered devices such as wearable and Internet of Things (IoT) devices in which small size, low power consumption, and long-term reliability are paramount. The Automotive Grade AEC-Q100 qualified option is available for this device.

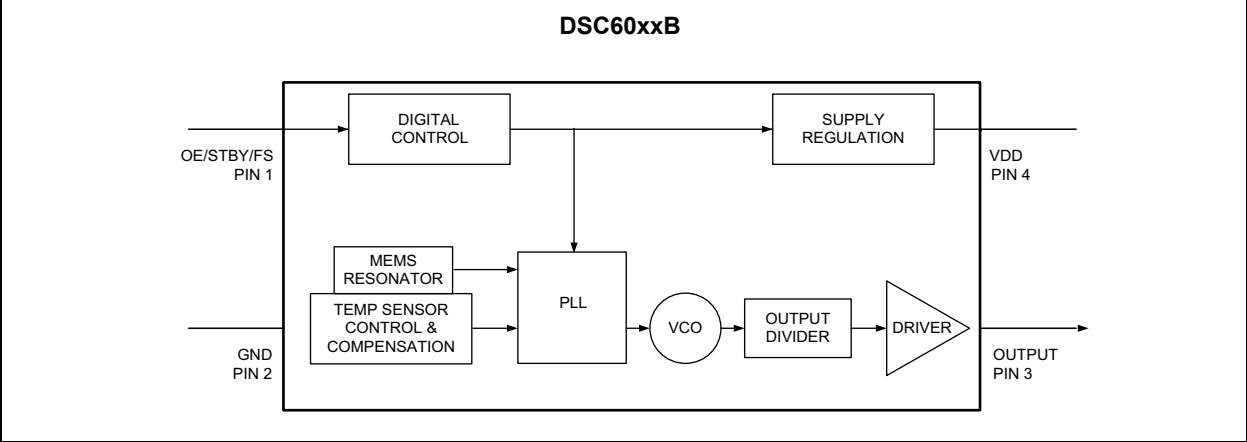
The DSC60xxB family is available in 1.6 mm x 1.2 mm & 2.0 mm x 1.6 mm VFLGA, 7.0 mm x 5.0 mm, 5.0 mm x 3.2 mm, & 3.2 mm x 2.5 mm VDFN, and 2.5 mm x 2.0 mm VLGA packages. These packages are “drop-in” replacements for standard 4-pin CMOS quartz crystal oscillators.

Package Types



DSC60XXB

Block Diagram



1.0 ELECTRICAL CHARACTERISTICS

Absolute Maximum Ratings

Supply Voltage	-0.3V to +4.0V
Input Voltage (V_{IN})	-0.3V to $V_{DD}+0.3V$
ESD Protection	4 kV HBM, 400V MM, 2 kV CDM

ELECTRICAL CHARACTERISTICS

Electrical Characteristics: Unless otherwise indicated, $V_{DD} = 1.8V -5\%$ to $3.3V +10\%$, $T_A = -40^{\circ}C$ to $+125^{\circ}C$.						
Parameters	Sym.	Min.	Typ.	Max.	Units	Conditions
Supply Voltage Note 1	V_{DD}	1.71	—	3.63	V	—
Active Supply Current	I_{DD}	—	1.3	—	mA	$F_{OUT} = 24$ MHz, $V_{DD} = 1.8V$, No Load
Power Supply Ramp	t_{PU}	0.1	—	100	ms	Note 9
Standby Supply Current Note 2	I_{STBY}	—	1.0	—	μA	$V_{DD} = 1.8/2.5V$
		—	1.5	—		$V_{DD} = 3.3V$
Frequency	f_0	0.002	—	80	MHz	—
Frequency Stability Note 3	Δf	—	—	± 20 ± 25 ± 50	ppm	All temp ranges
Aging	Δf	—	—	± 5	ppm	1st year @25°C
		—	—	± 1		Per year after first year
Startup Time	t_{SU}	—	—	1.5	ms	From 90% V_{DD} to valid clock output, $T = 25^{\circ}C$
Input Logic Levels Note 4	V_{IH}	$0.7 \times V_{DD}$	—	—	V	Input Logic High
	V_{IL}	—	—	$0.3 \times V_{DD}$	V	Input Logic Low
Output Disable Time Note 5	t_{DA}	—	—	200 + 2 Periods	ns	—
Output Enable Time Note 6	t_{EN}	—	—	1	μs	—
Enable Pull-Up Resistor Note 7	—	—	300	—	k Ω	If configured
Output Logic Levels, Low Drive	V_{OH}	$0.8 \times V_{DD}$	—	—	V	Output Logic High, $I = 1$ mA
	V_{OL}	—	—	$0.2 \times V_{DD}$	V	Output Logic Low, $I = -1$ mA

- Note 1:** Pin 4 V_{DD} should be filtered with 0.1 μF capacitor.
- 2:** Not including current through pull-up resistor on EN pin (if configured).
- 3:** Includes frequency variations due to initial tolerance, temp. and power supply voltage.
- 4:** Input waveform must be monotonic with rise/fall time < 10 ms
- 5:** Output Disable time takes up to two periods of the output waveform + 200 ns.
- 6:** For parts configured with OE, not Standby.
- 7:** Output is enabled if pad is floated or not connected.
- 8:** Output Duty Cycle will be 40% to 60% when output frequency is between 40 MHz to 60 MHz.
- 9:** Time to reach 90% of target V_{DD} . Power ramp rise must be monotonic.
- 10:** Peak-to-peak period jitter is measured over 10,000 cycles.

DSC60XXB

ELECTRICAL CHARACTERISTICS (CONTINUED)

Electrical Characteristics: Unless otherwise indicated, $V_{DD} = 1.8V -5\%$ to $3.3V +10\%$, $T_A = -40^{\circ}C$ to $+125^{\circ}C$.							
Parameters	Sym.	Min.	Typ.	Max.	Units	Conditions	
Output Transition Time Rise Time/Fall Time	t_{RX}/t_{FX}	—	2.5	3.5	ns	DSC60x3B Low Drive, 20% to 80% $C_L = 5$ pF	$V_{DD} = 1.8V$
		—	1.5	2.2			$V_{DD} = 2.5V/3.3V$
	t_{RY}/t_{FY}	—	1.2	2.0	ns	DSC60x1B Std. Drive, 20% to 80% $C_L = 10$ pF	$V_{DD} = 1.8V$
		—	0.6	1.2			$V_{DD} = 2.5V/3.3V$
Output Duty Cycle Note 8	SYM	45	—	55	%	—	
Period Jitter, RMS	J_{PER}	—	28	—	ps	DSC60x3B Low Drive, $F_{OUT} = 27$ MHz $C_L = 5$ pF	$V_{DD} = 1.8V$
		—	23	—			$V_{DD} = 2.5V/3.3V$
		—	20	—		DSC60x1B Std. Drive, $F_{OUT} = 27$ MHz $C_L = 10$ pF	$V_{DD} = 1.8V$
		—	18	—			$V_{DD} = 2.5V/3.3V$
Cycle-to-Cycle Jitter, Peak	J_{Cy-Cy}	—	120	—	ps	DSC60x3B Low Drive, $F_{OUT} = 27$ MHz $C_L = 5$ pF	$V_{DD} = 1.8V$
		—	90	—			$V_{DD} = 2.5V/3.3V$
		—	115	—		DSC60x1B Std. Drive, $F_{OUT} = 27$ MHz $C_L = 10$ pF	$V_{DD} = 1.8V$
		—	90	—			$V_{DD} = 2.5V/3.3V$

- Note 1:** Pin 4 V_{DD} should be filtered with 0.1 μF capacitor.
- Note 2:** Not including current through pull-up resistor on EN pin (if configured).
- Note 3:** Includes frequency variations due to initial tolerance, temp. and power supply voltage.
- Note 4:** Input waveform must be monotonic with rise/fall time < 10 ms
- Note 5:** Output Disable time takes up to two periods of the output waveform + 200 ns.
- Note 6:** For parts configured with OE, not Standby.
- Note 7:** Output is enabled if pad is floated or not connected.
- Note 8:** Output Duty Cycle will be 40% to 60% when output frequency is between 40 MHz to 60 MHz.
- Note 9:** Time to reach 90% of target V_{DD} . Power ramp rise must be monotonic.
- Note 10:** Peak-to-peak period jitter is measured over 10,000 cycles.

ELECTRICAL CHARACTERISTICS (CONTINUED)

Electrical Characteristics: Unless otherwise indicated, $V_{DD} = 1.8V -5\%$ to $3.3V +10\%$, $T_A = -40^{\circ}C$ to $+125^{\circ}C$.						
Parameters	Sym.	Min.	Typ.	Max.	Units	Conditions
Period Jitter, Peak-to-Peak, Note 10	$J_{PERPK-PK}$	—	210	—	ps	DSC60x3B Low Drive, $F_{OUT} =$ 27 MHz $C_L = 5$ pF $V_{DD} = 1.8V$
		—	190	—		$V_{DD} =$ 2.5V/3.3V
		—	160	—		DSC60x1B Std. Drive, $F_{OUT} =$ 27 MHz $C_L = 10$ pF $V_{DD} = 1.8V$
		—	144	—		$V_{DD} =$ 2.5V/3.3V

- Note 1:** Pin 4 V_{DD} should be filtered with 0.1 μF capacitor.
- 2:** Not including current through pull-up resistor on EN pin (if configured).
- 3:** Includes frequency variations due to initial tolerance, temp. and power supply voltage.
- 4:** Input waveform must be monotonic with rise/fall time < 10 ms
- 5:** Output Disable time takes up to two periods of the output waveform + 200 ns.
- 6:** For parts configured with OE, not Standby.
- 7:** Output is enabled if pad is floated or not connected.
- 8:** Output Duty Cycle will be 40% to 60% when output frequency is between 40 MHz to 60 MHz.
- 9:** Time to reach 90% of target V_{DD} . Power ramp rise must be monotonic.
- 10:** Peak-to-peak period jitter is measured over 10,000 cycles.

DSC60XXB

TEMPERATURE SPECIFICATIONS (Note 1)

Parameters	Sym.	Min.	Typ.	Max.	Units	Conditions
Temperature Ranges						
Maximum Junction Temperature	T_J	—	—	+150	°C	—
Storage Ambient Temperature Range	T_S	-55	—	+150	°C	—
Soldering Temperature	—	—	+260	—	°C	40 sec. max.

Note 1: The maximum allowable power dissipation is a function of ambient temperature, the maximum allowable junction temperature and the thermal resistance from junction to air (i.e., T_A , T_J , θ_{JA}). Exceeding the maximum allowable power dissipation will cause the device operating junction temperature to exceed the maximum +150°C rating. Sustained junction temperatures above +150°C can impact the device reliability.

2.0 PIN DESCRIPTIONS

The DSC60xxB is a highly configurable device and can be factory programmed in many different ways to meet the customer's needs. Microchip's ClockWorks® Configurator <http://clockworks.microchip.com/Timing/> must be used to choose the necessary options, create the final part number, data sheet, and order samples. The descriptions of the pins are listed in [Table 2-1](#).

TABLE 2-1: DSC60XXB PIN FUNCTION TABLE

Pin Number	Pin Name	Description
1	OE	Output Enable: H = Active, L = Disabled (High Impedance).
	$\overline{\text{STDBY}}$	Standby: H = Device is active, L = Device is in standby (Low Power Mode).
	FS	Frequency Select: H = Output Frequency 1, L = Output Frequency 2.
2	GND	Ground.
3	OUTPUT	Oscillator clock output
4	VDD	Power Supply: 1.71V to 3.63V.

An explanation of the different options listed in [Table 2-1](#) follows.

2.1 Pin 1

This is a control pin and may be configured to fulfill one of six different functions. If not actively driven, a 10 k Ω pull-up resistor is recommended.

2.1.1 OUTPUT ENABLE (OE)

Pin 1 may be configured as OE. Oscillator output may be turned on and off according to the state of this pin.

2.1.2 $\overline{\text{STDBY}}$

Pin 1 may be configured as Standby. When the pin is low, both output buffer and PLL will be off and the device will enter a low power mode.

2.1.3 FREQUENCY SELECT (FS)

Pin 1 may be configured as FS. The output may be set to one of two pre-programmed frequencies. The output clock frequencies can only be set to either kHz or MHz. A combination of kHz and MHz cannot be set.

2.2 Pins 2 through 4

Pins 2 and 4 are the supply terminals, GND and VDD respectively. Pin 3 is the clock output, programmable to Standard and Low Drive strength settings. Visit ClockWorks® Configurator to customize your device.

DSC60XXB

3.0 DIAGRAMS

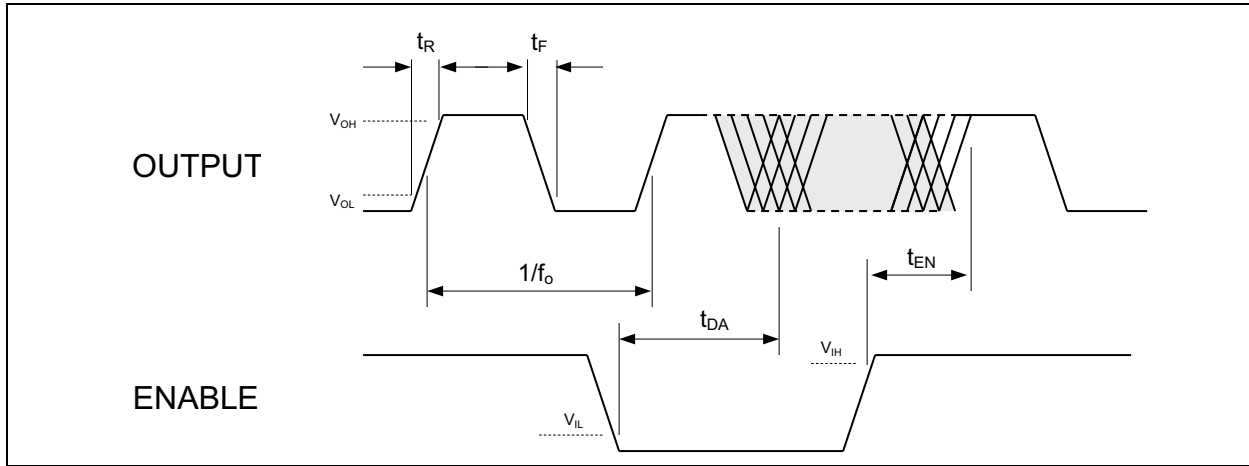


FIGURE 3-1: Output Waveform.

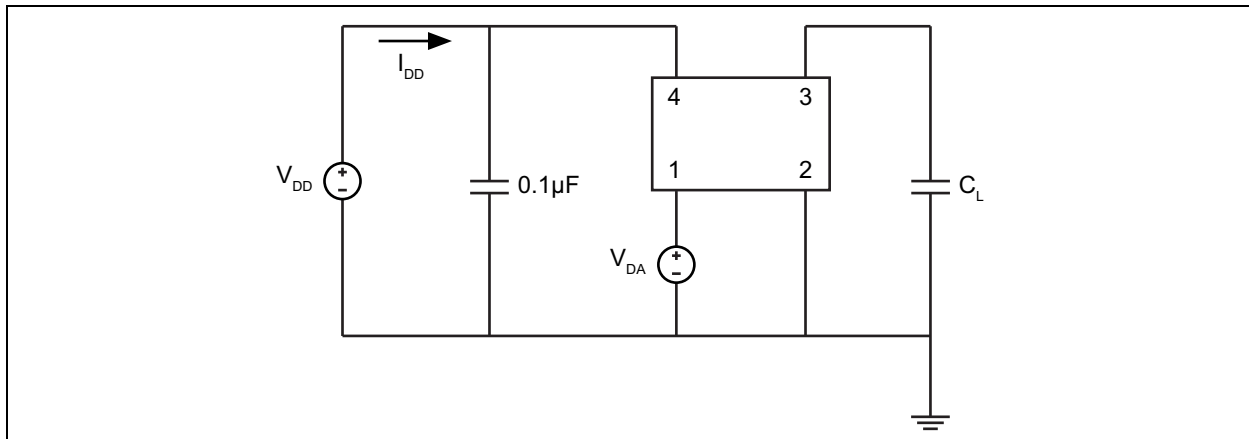


FIGURE 3-2: Test Circuit.

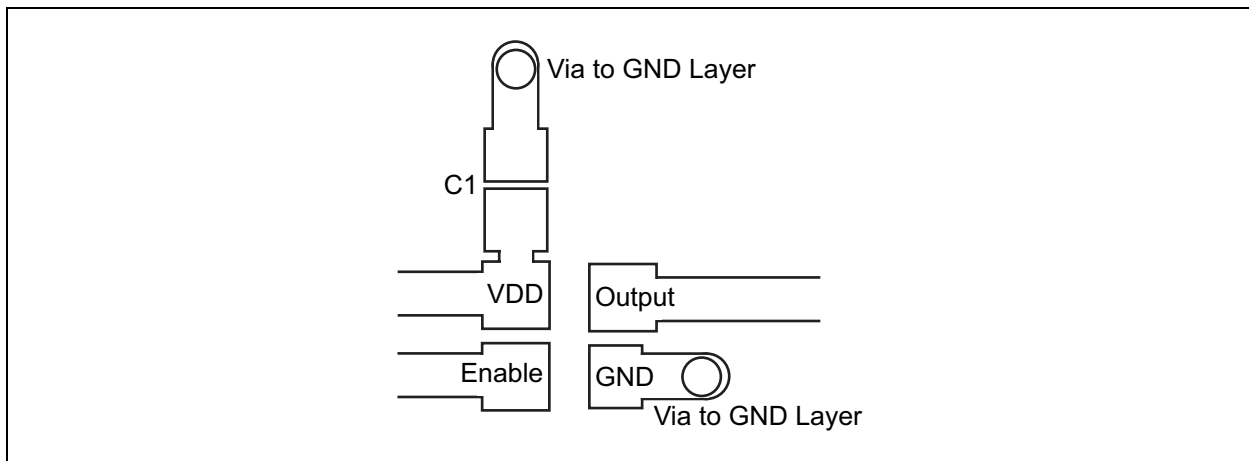


FIGURE 3-3: Recommended Board Layout.

4.0 SOLDER REFLOW PROFILE

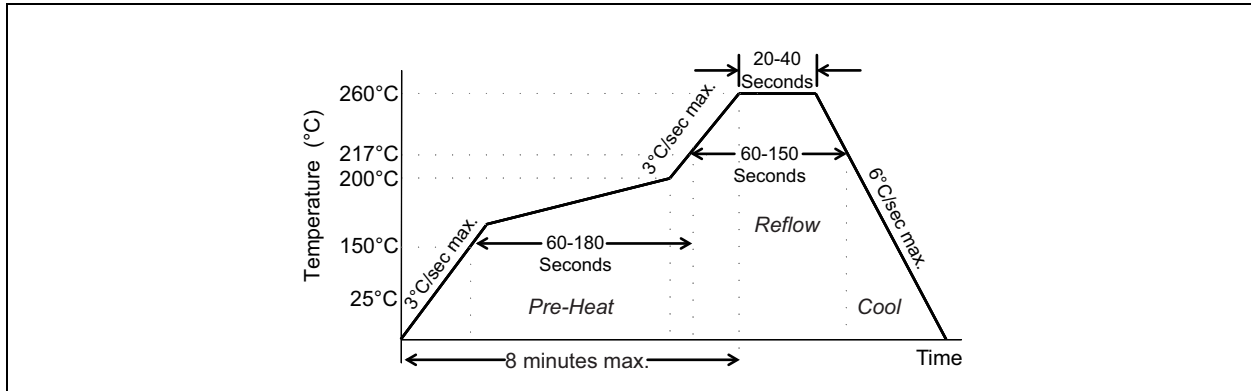


FIGURE 4-1: Solder Reflow Profile.

MSL 1 @ 260°C refer to JSTD-020C	
Ramp-Up Rate (200°C to Peak Temp)	3°C/sec. max.
Preheat Time 150°C to 200°C	60 to 180 sec.
Time maintained above 217°C	60 to 150 sec.
Peak Temperature	255°C to 260°C
Time within 5°C of actual Peak	20 to 40 sec.
Ramp-Down Rate	6°C/sec. max.
Time 25°C to Peak Temperature	8 minutes max.

DSC60XXB

5.0 PACKAGING INFORMATION

5.1 Package Marking Information

4-Lead

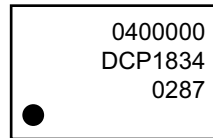
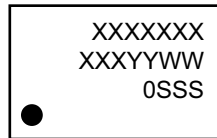
7.0mm x 5.0mm VDFN*

5.0mm x 3.2mm VDFN*

3.2mm x 2.5mm VDFN*

2.5mm x 2.0mm VLGA*

Example

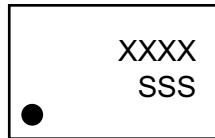


4-Lead VFLGA*

2.0mm x 1.6mm

1.6mm x 1.2mm

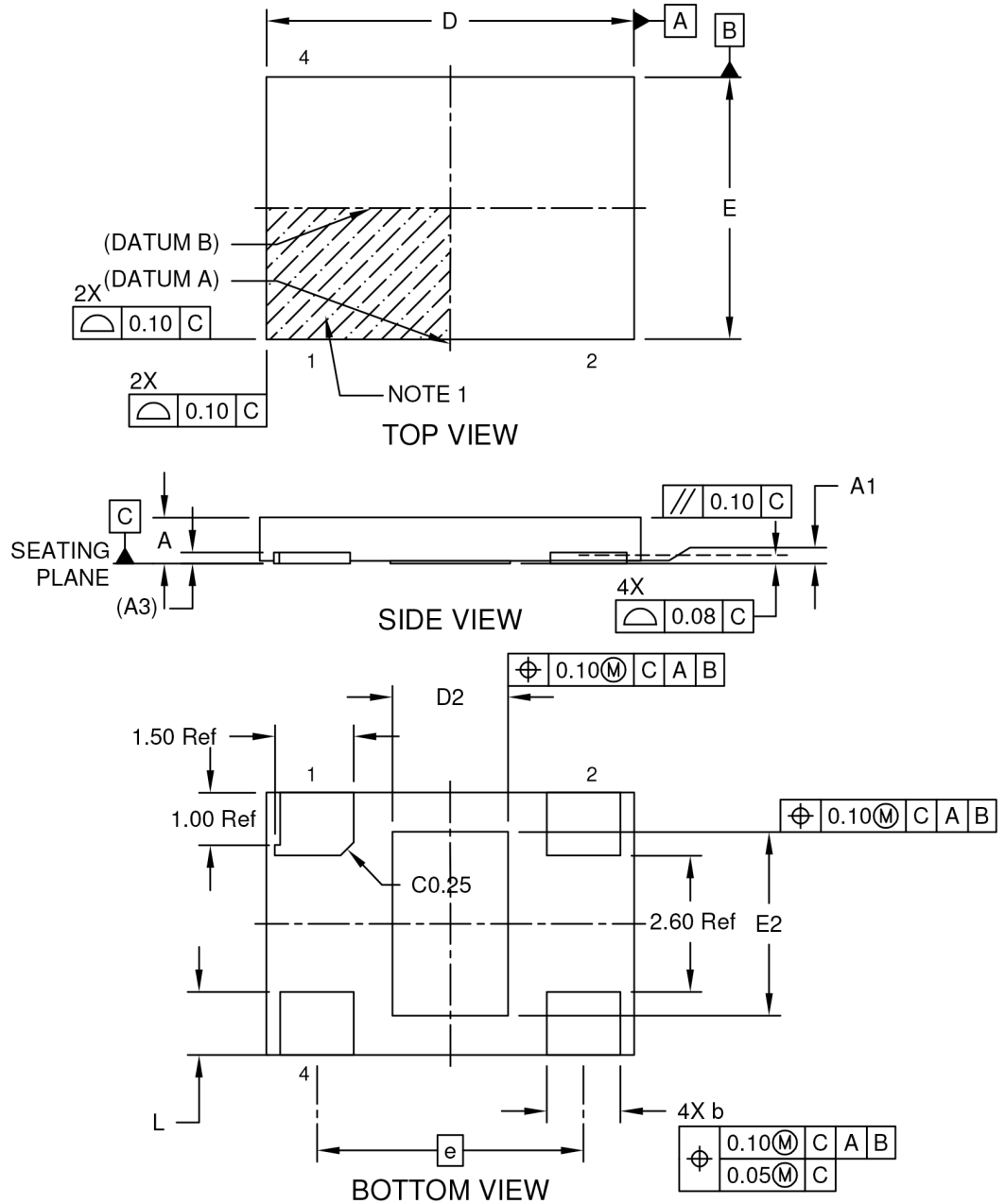
Example



Legend:	XX...X	Product code or customer-specific information
	Y	Year code (last digit of calendar year)
	YY	Year code (last 2 digits of calendar year)
	WW	Week code (week of January 1 is week '01')
	SSS	Alphanumeric traceability code
	(e3)	Pb-free JEDEC® designator for Matte Tin (Sn)
	*	This package is Pb-free. The Pb-free JEDEC designator ((e3)) can be found on the outer packaging for this package.
	•, ▲, ▼	Pin one index is identified by a dot, delta up, or delta down (triangle mark).
Note:	In the event the full Microchip part number cannot be marked on one line, it will be carried over to the next line, thus limiting the number of available characters for customer-specific information. Package may or may not include the corporate logo.	
	Underbar () and/or Overbar () symbol may not be to scale.	

4-Lead Very Thin Dual Flatpack, No Lead Package (JZA) - 7x5x0.9 mm Body [VDFN] With 2.2x3.5 mm Exposed Pad

Note: For the most current package drawings, please see the Microchip Packaging Specification located at <http://www.microchip.com/packaging>

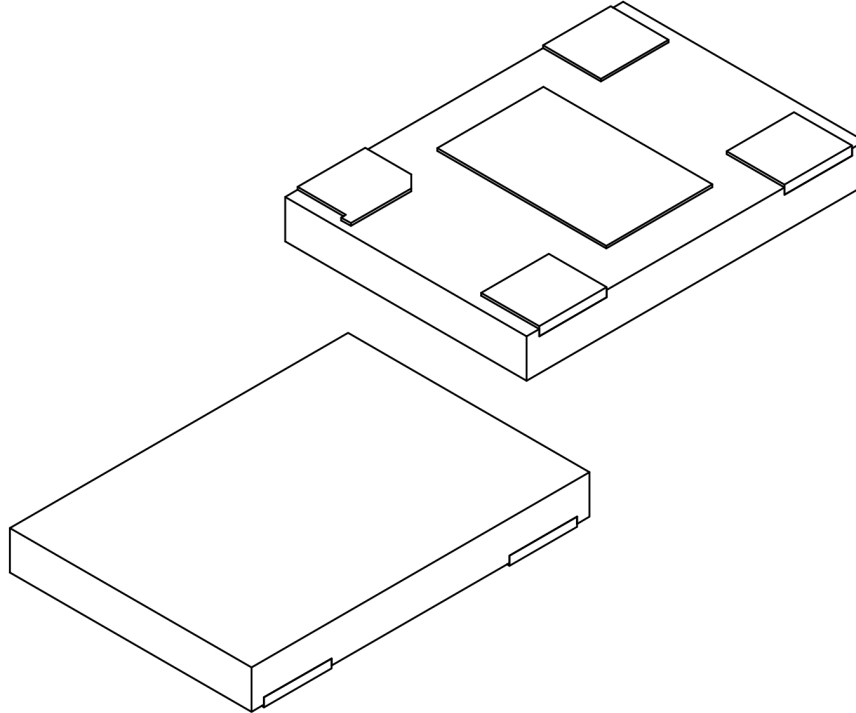


Microchip Technology Drawing C04-1025 Rev A Sheet 1 of 2

DSC60XXB

4-Lead Very Thin Dual Flatpack, No Lead Package (JZA) - 7x5x0.9 mm Body [VDFN] With 2.2x3.5 mm Exposed Pad

Note: For the most current package drawings, please see the Microchip Packaging Specification located at <http://www.microchip.com/packaging>



Dimension Limits	Units	MILLIMETERS		
		MIN	NOM	MAX
Number of Terminals	N	004		
Pitch	e	5.08 Ref		
Overall Height	A	0.80	0.85	0.90
Standoff	A1	0.00	-	0.05
Terminal Thickness	A3	0.203 Ref		
Overall Length	D	6.90	7.00	7.10
Exposed Pad Length	D2	2.10	2.20	2.30
Overall Width	E	4.90	5.00	5.10
Exposed Pad Width	E2	3.40	3.50	3.60
Terminal Width	b	1.35	1.40	1.45
Terminal Length	L	1.10	1.20	1.30

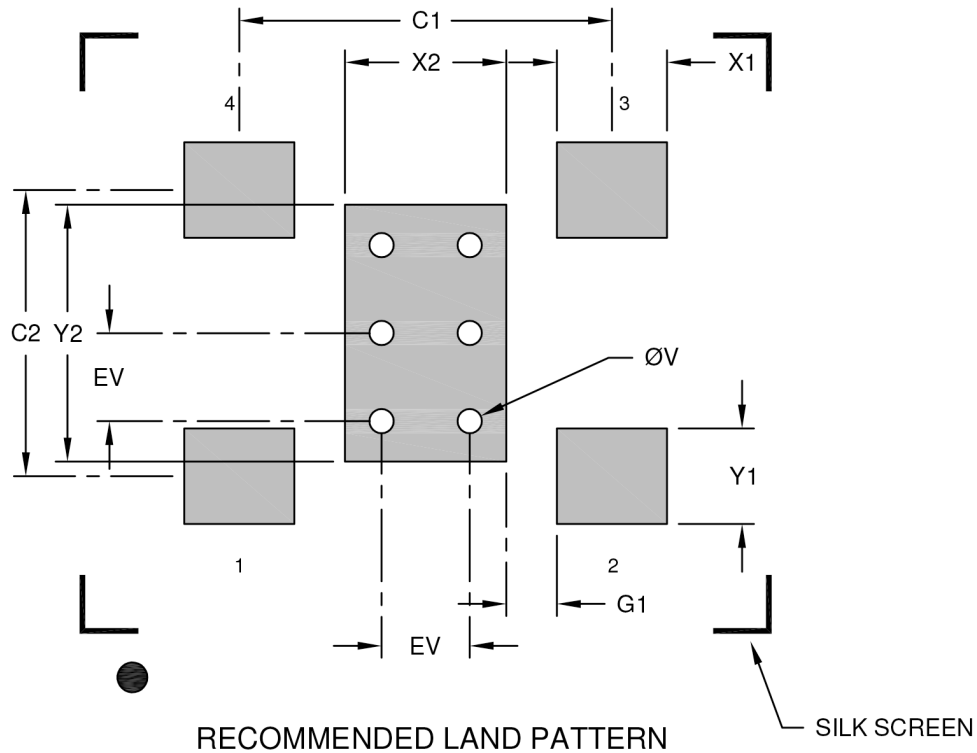
Notes:

1. Pin 1 visual index feature may vary, but must be located within the pin 1 area.
2. Package is saw singulated
3. Dimensioning and tolerancing per ASME Y14.5M
BSC: Basic Dimension. Theoretically exact value shown without tolerances.
REF: Reference Dimension, usually without tolerance, for information purposes only.

Microchip Technology Drawing C04-1025 Rev A Sheet 2 of 2

4-Lead Very Thin Dual Flatpack, No Lead Package [JZA] - 7x5x0.9 mm Body [VDFN] With 2.2x3.5 mm Exposed Pad

Note: For the most current package drawings, please see the Microchip Packaging Specification located at <http://www.microchip.com/packaging>



Dimension Limits	Units	MILLIMETERS		
		MIN	NOM	MAX
Optional Center Pad Width	X2			2.30
Optional Center Pad Length	Y2			3.60
Contact Pad Spacing	C1		5.08	
Contact Pad Spacing	C2		3.90	
Contact Pad Width (Xnn)	X1			1.50
Contact Pad Length (Xnn)	Y1			1.30
Contact Pad to Center Pad (Xnn)	G1	0.69		
Thermal Via Diameter	V		0.33	
Thermal Via Pitch	EV		1.20	

Notes:

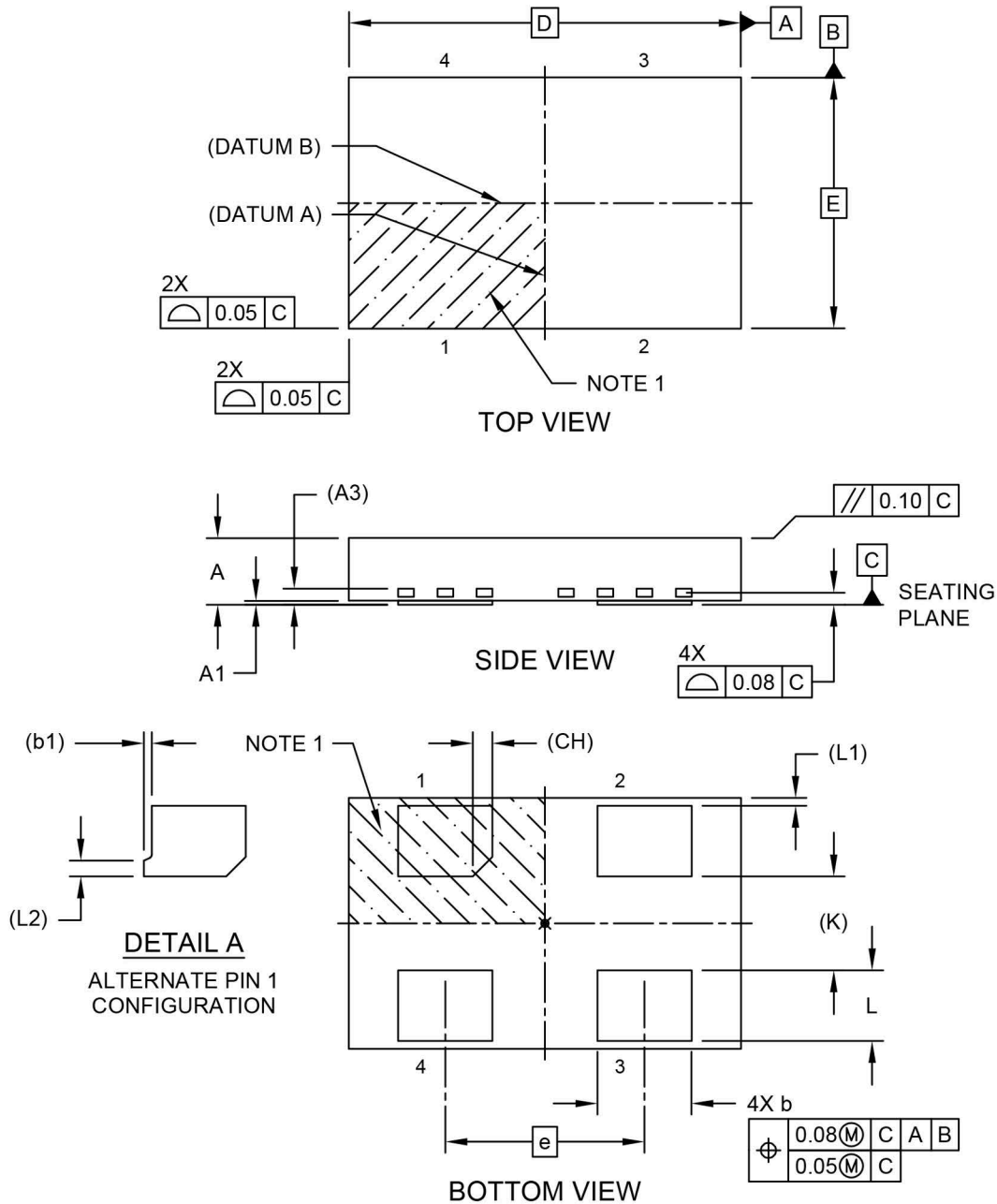
- Dimensioning and tolerancing per ASME Y14.5M
BSC: Basic Dimension. Theoretically exact value shown without tolerances.
- For best soldering results, thermal vias, if used, should be filled or tented to avoid solder loss during reflow process

Microchip Technology Drawing C04-3025 Rev A

DSC60XXB

4-Lead Very Thin Plastic Dual Flat, No Lead Package (H6A) - 5x3.2 mm Body [VDFN]

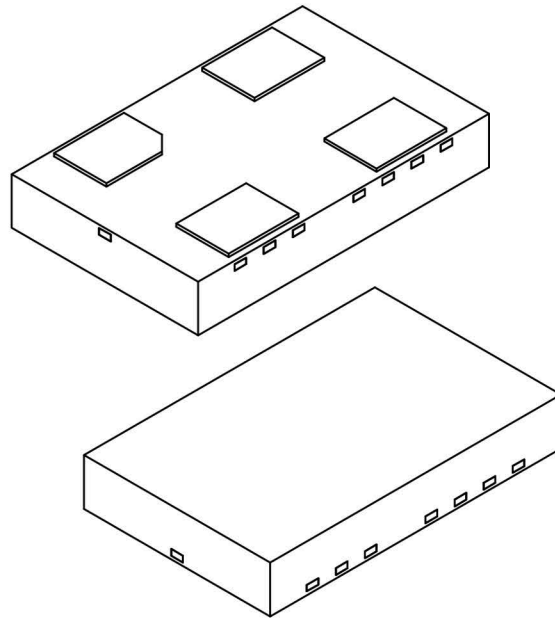
Note: For the most current package drawings, please see the Microchip Packaging Specification located at <http://www.microchip.com/packaging>



Microchip Technology Drawing C04-1008 Rev A Sheet 1 of 2

4-Lead Very Thin Plastic Dual Flat, No Lead Package (H6A) - 5x3.2 mm Body [VDFN]

Note: For the most current package drawings, please see the Microchip Packaging Specification located at <http://www.microchip.com/packaging>



Dimension Limits	Units	MILLIMETERS		
		MIN	NOM	MAX
Number of Terminals	N	4		
Pitch	e	2.54 BSC		
Overall Height	A	0.80	0.85	0.90
Standoff	A1	0.00	0.02	0.05
Terminal Thickness	A3	0.20 REF		
Overall Length	D	5.00 BSC		
Overall Width	E	3.20 BSC		
Terminal Width	b	1.15	1.20	1.25
Terminal 1 Tab	b1	0.10 REF		
Terminal Length	L	0.80	0.90	1.00
Terminal Pull Back	L1	0.10 REF		
Terminal 1 Tab	L2	0.20 REF		
Terminal 1 Chamfer	CH	0.25 REF		
Terminal Spacing	K	1.20 REF		

Notes:

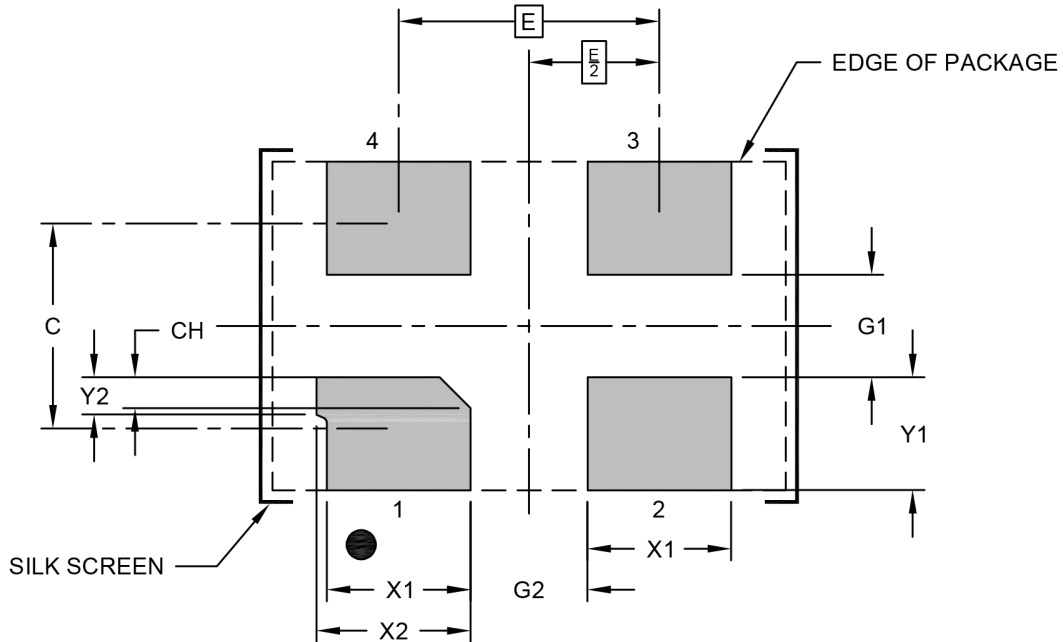
1. Pin 1 visual index feature may vary, but must be located within the hatched area.
2. Package is saw singulated
3. Dimensioning and tolerancing per ASME Y14.5M
 BSC: Basic Dimension. Theoretically exact value shown without tolerances.
 REF: Reference Dimension, usually without tolerance, for information purposes only.

Microchip Technology Drawing C04-1008 Rev A Sheet 2 of 2

DSC60XXB

4-Lead Very Thin Plastic Dual Flat, No Lead Package (H6A) - 5x3.2 mm Body [VDFN]

Note: For the most current package drawings, please see the Microchip Packaging Specification located at <http://www.microchip.com/packaging>



RECOMMENDED LAND PATTERN

Dimension Limits	Units	MILLIMETERS		
		MIN	NOM	MAX
Contact Pitch	E			
Contact Pad Spacing	C		2.00	
Contact Pad Width (X4)	X1			1.40
Contact Pad Width	X2			1.50
Contact Pad Length (X4)	Y1			1.10
Contact Pad Tab Length	Y2			0.36
Contact Pad to Center Pad (X2)	G1	1.00		
Contact Pad to Contact Pad (X2)	G2	1.14		
Terminal 1 Contact Pad Chamfer	CH		0.30	

Notes:

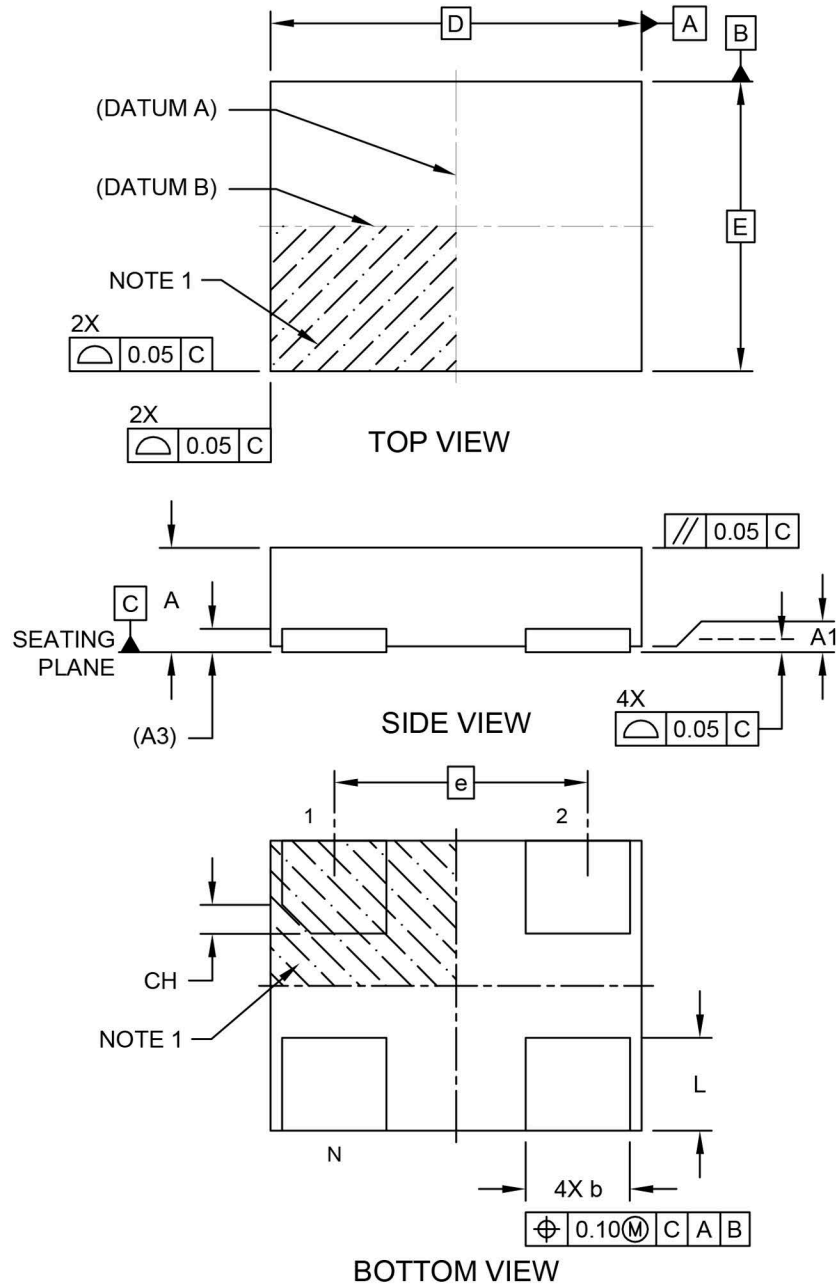
1. Dimensioning and tolerancing per ASME Y14.5M

BSC: Basic Dimension. Theoretically exact value shown without tolerances.

Microchip Technology Drawing C04-3008 Rev A

4-Lead Very Thin Plastic Dual Flatpack No-Lead (H4A) - 3.2x2.5 mm Body [VDFN]

Note: For the most current package drawings, please see the Microchip Packaging Specification located at <http://www.microchip.com/packaging>

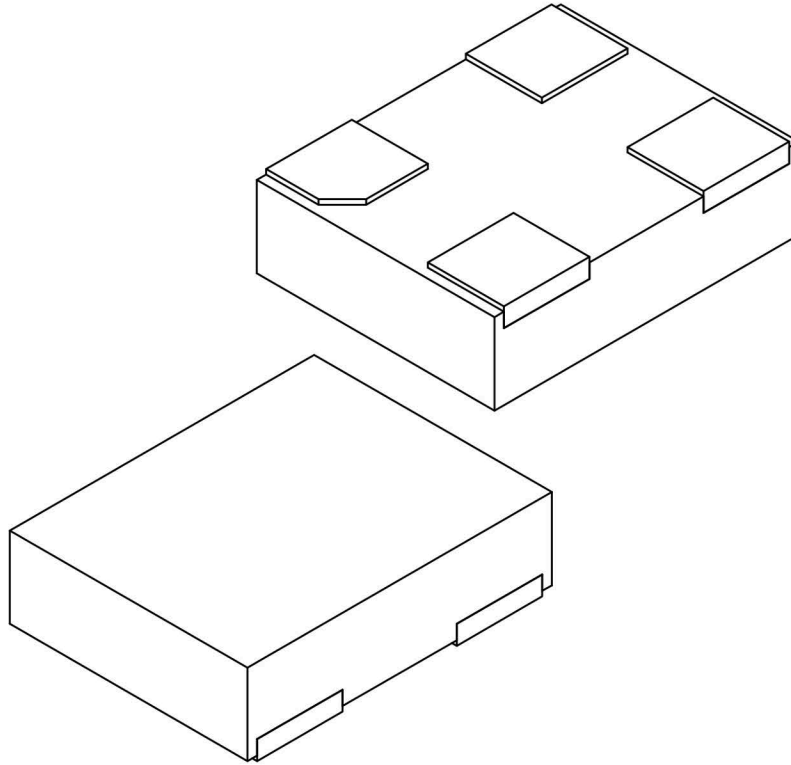


Microchip Technology Drawing C04-1006 Rev B Sheet 1 of 2

DSC60XXB

4-Lead Very Thin Plastic Dual Flatpack No-Lead (H4A) - 3.2x2.5 mm Body [VDFN]

Note: For the most current package drawings, please see the Microchip Packaging Specification located at <http://www.microchip.com/packaging>



Units		MILLIMETERS		
		MIN	NOM	MAX
Number of Terminals	N	4		
Pitch	e	2.10 BSC		
Overall Height	A	0.80	0.85	0.90
Standoff	A1	0.00	0.02	0.05
Overall Length	D	3.20 BSC		
Overall Width	E	2.50 BSC		
Terminal Width	b	0.85	0.90	0.95
Terminal Length	L	0.70	0.80	0.90
Terminal 1 Index Chamfer	CH	0.25 REF		

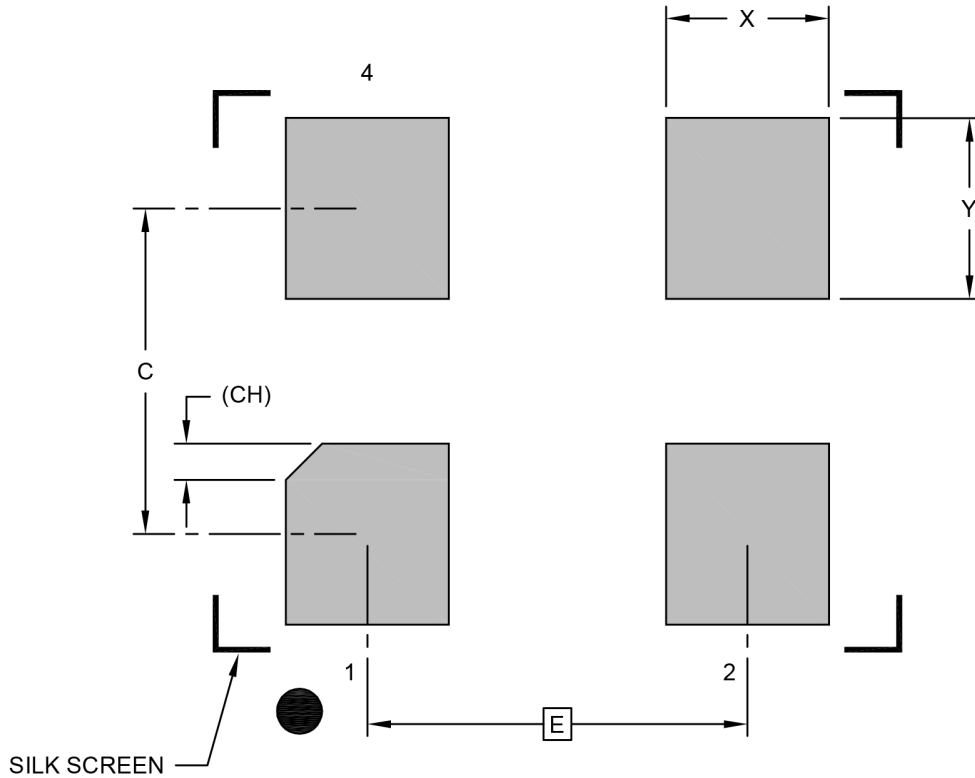
Notes:

1. Pin 1 visual index feature may vary, but must be located within the hatched area.
2. Package is saw singulated
3. Dimensioning and tolerancing per ASME Y14.5M
BSC: Basic Dimension. Theoretically exact value shown without tolerances.
REF: Reference Dimension, usually without tolerance, for information purposes only.

Microchip Technology Drawing C04-1006 Rev B Sheet 2 of 2

4-Lead Very Thin Plastic Dual Flatpack No-Lead (H4A) - 3.2x2.5 mm Body [VDFN]

Note: For the most current package drawings, please see the Microchip Packaging Specification located at <http://www.microchip.com/packaging>



RECOMMENDED LAND PATTERN

Dimension Limits	Units	MILLIMETERS		
		MIN	NOM	MAX
Contact Pitch	E	2.10 BSC		
Contact Pad Spacing	C		1.80	
Contact Pad Width (Xnn)	X			0.90
Contact Pad Length (Xnn)	Y			1.00
Contact Pad Length (Xnn)	CH	0.20 REF		

Notes:

1. Dimensioning and tolerancing per ASME Y14.5M

BSC: Basic Dimension. Theoretically exact value shown without tolerances.

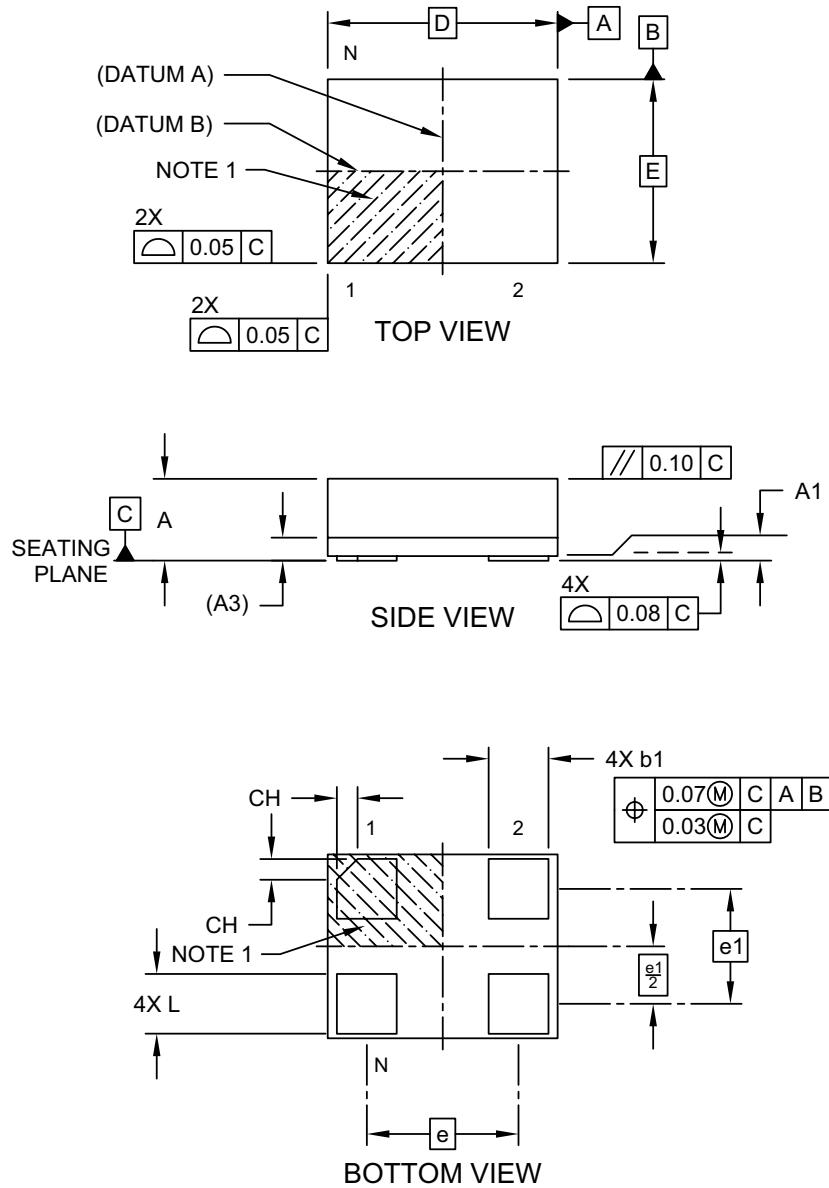
REF: Reference Dimension, usually without tolerance, for information purposes only.

Microchip Technology Drawing C04-3006 Rev B

DSC60XXB

4-Lead Very Thin Land Grid Array (AUA) - 2.5x2.0 mm Body [VLGA]

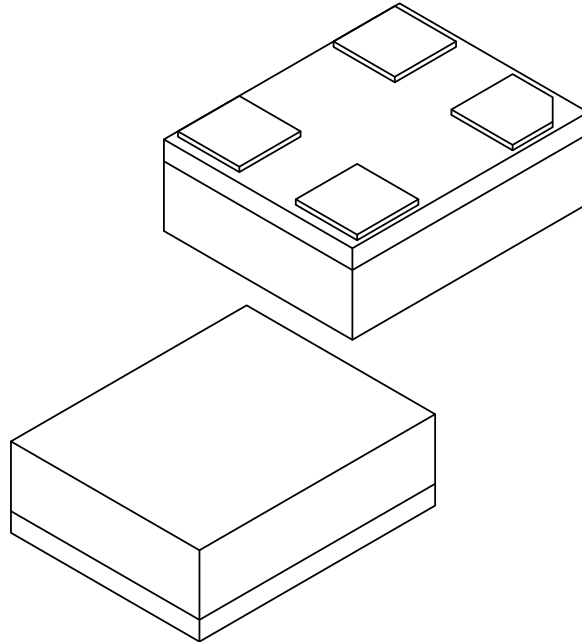
Note: For the most current package drawings, please see the Microchip Packaging Specification located at <http://www.microchip.com/packaging>



Microchip Technology Drawing C04-1202B Sheet 1 of 2

4-Lead Very Thin Land Grid Array (AUA) - 2.5x2.0 mm Body [VLGA]

Note: For the most current package drawings, please see the Microchip Packaging Specification located at <http://www.microchip.com/packaging>



Dimension Limits	Units	MILLIMETERS		
		MIN	NOM	MAX
Number of Terminals	N	4		
Terminal Pitch	e	1.65 BSC		
Terminal Pitch	e1	1.25 BSC		
Overall Height	A	0.79	0.84	0.89
Standoff	A1	0.00	0.02	0.05
Substrate Thickness (with Terminals)	A3	0.20 REF		
Overall Length	D	2.50 BSC		
Overall Width	E	2.00 BSC		
Terminal Width	b1	0.60	0.65	0.70
Terminal Length	L	0.60	0.65	0.70
Terminal 1 Index Chamfer	CH	-	0.225	-

Notes:

1. Pin 1 visual index feature may vary, but must be located within the hatched area.
2. Package is saw singulated
3. Dimensioning and tolerancing per ASME Y14.5M

BSC: Basic Dimension. Theoretically exact value shown without tolerances.

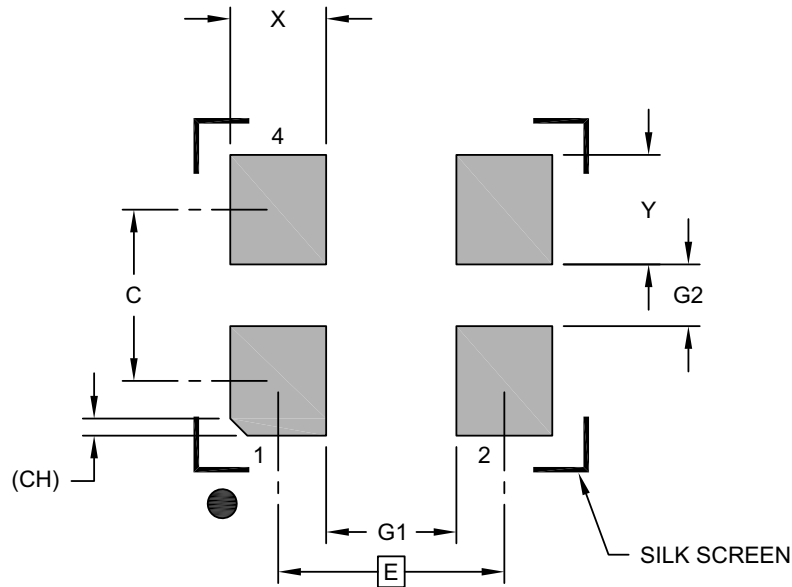
REF: Reference Dimension, usually without tolerance, for information purposes only.

Microchip Technology Drawing C04-1202B Sheet 2 of 2

DSC60XXB

4-Lead Very Thin Land Grid Array (AUA) - 2.5x2.0 mm Body [VLGA]

Note: For the most current package drawings, please see the Microchip Packaging Specification located at <http://www.microchip.com/packaging>



RECOMMENDED LAND PATTERN

Dimension Limits	Units	MILLIMETERS		
		MIN	NOM	MAX
Contact Pitch	E	1.65 BSC		
Contact Spacing	C		1.25	
Contact Width (X4)	X			0.70
Contact Pad Length (X4)	Y			0.80
Space Between Contacts (X2)	G1	0.95		
Space Between Contacts (X2)	G2	0.45		
Contact 1 Index Chamfer	CH	0.13 X 45° REF		

Notes:

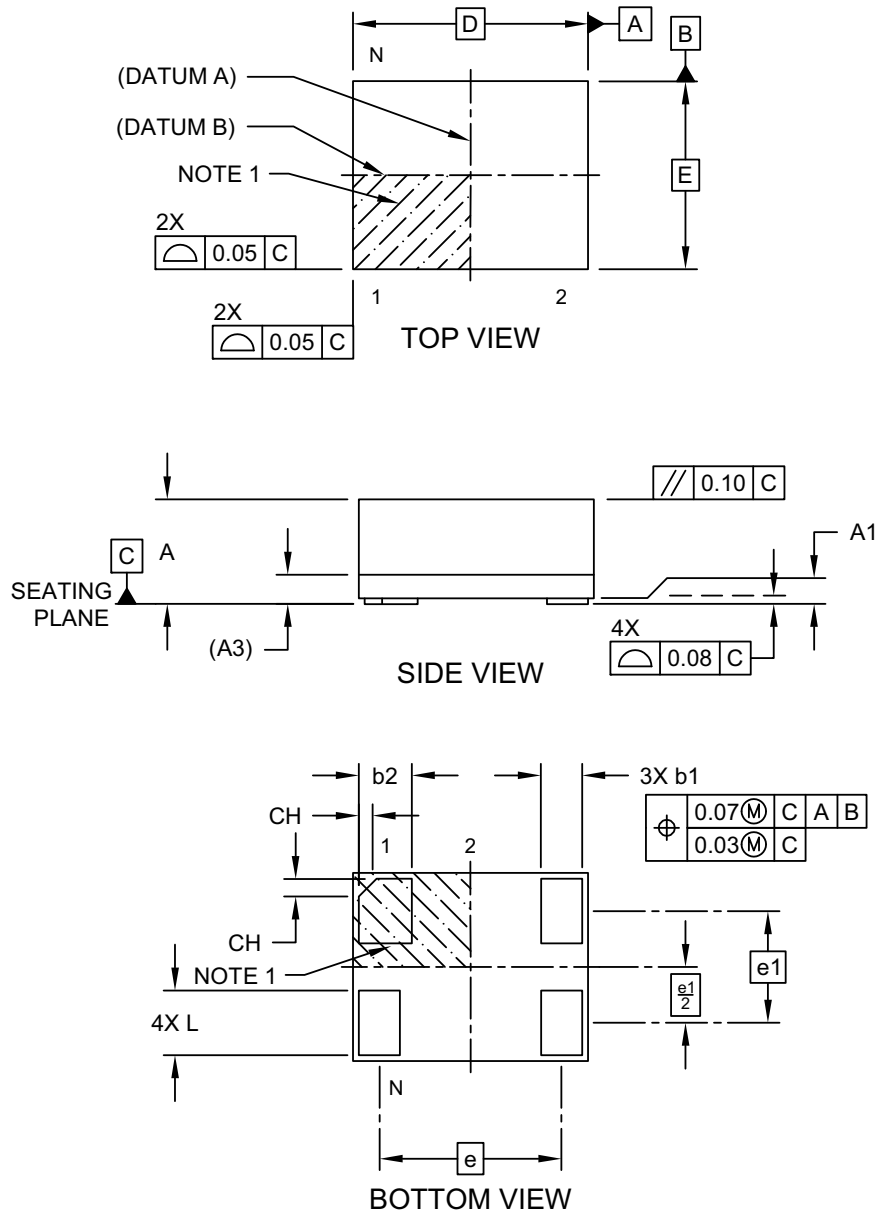
1. Dimensioning and tolerancing per ASME Y14.5M

BSC: Basic Dimension. Theoretically exact value shown without tolerances.

Microchip Technology Drawing C04-3202B

4-Lead Very Thin Fine Pitch Land Grid Array (ASA) - 2.0x1.6 mm Body [VFLGA]

Note: For the most current package drawings, please see the Microchip Packaging Specification located at <http://www.microchip.com/packaging>

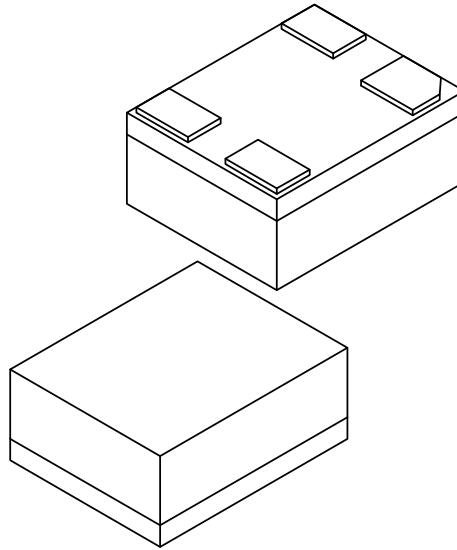


Microchip Technology Drawing C04-1200 Rev D Sheet 1 of 2

DSC60XXB

4-Lead Very Thin Fine Pitch Land Grid Array (ASA) - 2.0x1.6 mm Body [VFLGA]

Note: For the most current package drawings, please see the Microchip Packaging Specification located at <http://www.microchip.com/packaging>



Dimension Limits	Units	MILLIMETERS		
		MIN	NOM	MAX
Number of Terminals	N	4		
Terminal Pitch	e	1.55 BSC		
Terminal Pitch	e1	0.95 BSC		
Overall Height	A	0.79	0.84	0.89
Standoff	A1	0.00	0.02	0.05
Substrate Thickness (with Terminals)	A3	0.20 REF		
Overall Length	D	2.00 BSC		
Overall Width	E	1.60 BSC		
Terminal Width	b1	0.30	0.35	0.40
Terminal Width	b2	0.40	0.45	0.50
Terminal Length	L	0.50	0.55	0.60
Terminal 1 Index Chamfer	CH	-	0.15	-

Notes:

1. Pin 1 visual index feature may vary, but must be located within the hatched area.
2. Package is saw singulated
3. Dimensioning and tolerancing per ASME Y14.5M

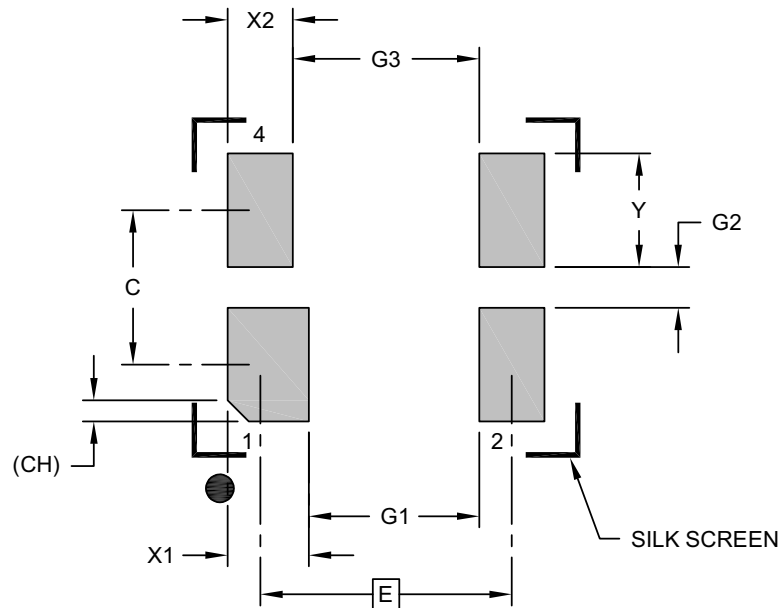
BSC: Basic Dimension. Theoretically exact value shown without tolerances.

REF: Reference Dimension, usually without tolerance, for information purposes only.

Microchip Technology Drawing C04-1200 Rev D Sheet 2 of 2

4-Lead Very Thin Fine Pitch Land Grid Array (ASA) - 2.0x1.6 mm Body [VFLGA]

Note: For the most current package drawings, please see the Microchip Packaging Specification located at <http://www.microchip.com/packaging>



RECOMMENDED LAND PATTERN

Dimension Limits	Units	MILLIMETERS		
		MIN	NOM	MAX
Contact Pitch	E	1.55 BSC		
Contact Spacing	C		0.95	
Contact Width	X1			0.50
Contact Width (X3)	X2			0.40
Contact Pad Length (X4)	Y			0.70
Space Between Contacts	G1	1.05		
Space Between Contacts (X2)	G2	0.25		
Space Between Contacts	G3	1.15		
Contact 1 Index Chamfer	CH	0.13 X 45° REF		

Notes:

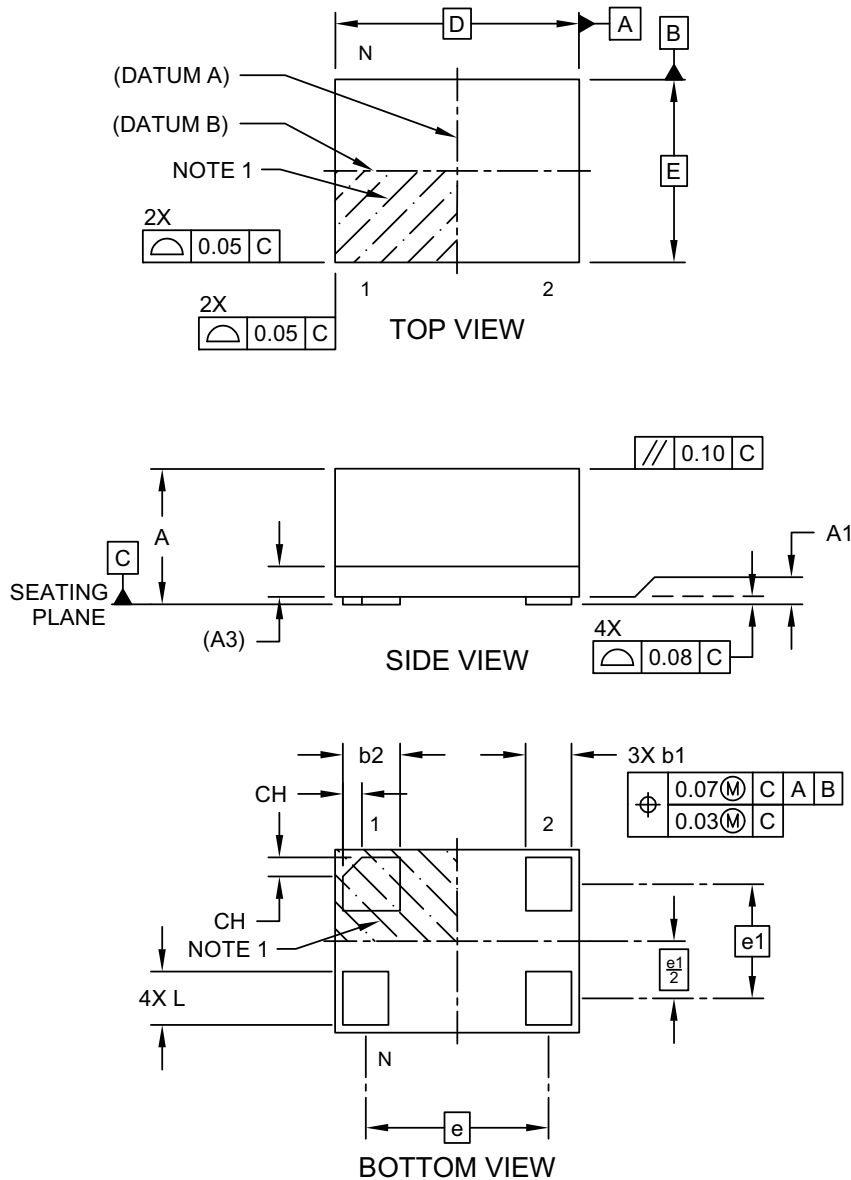
- Dimensioning and tolerancing per ASME Y14.5M
BSC: Basic Dimension. Theoretically exact value shown without tolerances.
- The value in parenthesis, next to the item description is a unit multiplier.

Microchip Technology Drawing C04-3200 Rev D

DSC60XXB

4-Lead Very Thin Fine Pitch Land Grid Array (ARA) - 1.6x1.2 mm Body [VFLGA]

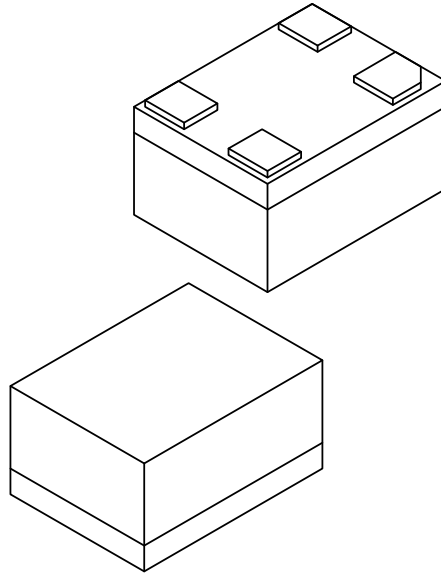
Note: For the most current package drawings, please see the Microchip Packaging Specification located at <http://www.microchip.com/packaging>



Microchip Technology Drawing C04-1199B Sheet 1 of 2

4-Lead Very Thin Fine Pitch Land Grid Array (ARA) - 1.6x1.2 mm Body [VFLGA]

Note: For the most current package drawings, please see the Microchip Packaging Specification located at <http://www.microchip.com/packaging>



Dimension Limits	Units	MILLIMETERS		
		MIN	NOM	MAX
Number of Terminals	N	4		
Terminal Pitch	e	1.20 BSC		
Terminal Pitch	e1	0.75 BSC		
Overall Height	A	0.79	0.84	0.89
Standoff	A1	0.00	0.02	0.05
Substrate Thickness (with Terminals)	A3	0.20 REF		
Overall Length	D	1.60 BSC		
Overall Width	E	1.20 BSC		
Terminal Width	b1	0.25	0.30	0.35
Terminal Width	b2	0.325	0.375	0.425
Terminal Length	L	0.30	0.35	0.40
Terminal 1 Index Chamfer	CH	-	0.125	-

Notes:

1. Pin 1 visual index feature may vary, but must be located within the hatched area.
2. Package is saw singulated
3. Dimensioning and tolerancing per ASME Y14.5M

BSC: Basic Dimension. Theoretically exact value shown without tolerances.

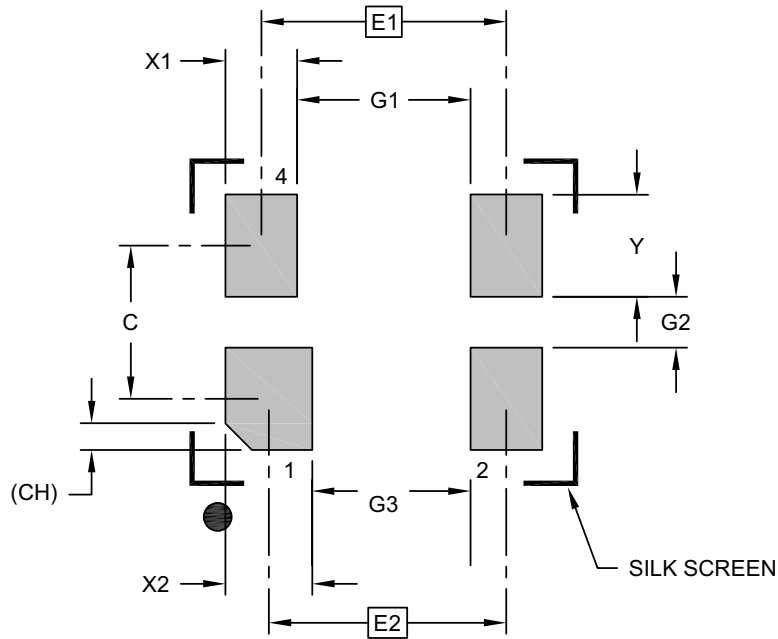
REF: Reference Dimension, usually without tolerance, for information purposes only.

Microchip Technology Drawing C04-1199B Sheet 2 of 2

DSC60XXB

4-Lead Very Thin Fine Pitch Land Grid Array (ARA) - 1.6x1.2 mm Body [VFLGA]

Note: For the most current package drawings, please see the Microchip Packaging Specification located at <http://www.microchip.com/packaging>



RECOMMENDED LAND PATTERN

Dimension Limits	Units	MILLIMETERS		
		MIN	NOM	MAX
Contact Pitch	E1	1.20 BSC		
Contact Pitch	E2	1.16 BSC		
Contact Spacing	C	0.75		
Contact Width (X3)	X1			0.35
Contact Width	X2			0.43
Contact Pad Length (X4)	Y			0.50
Space Between Contacts	G1	0.85		
Space Between Contacts (X2)	G2	0.25		
Space Between Contacts	G3	0.77		
Contact 1 Index Chamfer	CH	0.13 X 45° REF		

Notes:

1. Dimensioning and tolerancing per ASME Y14.5M
BSC: Basic Dimension. Theoretically exact value shown without tolerances.
2. The value in parenthesis, next to the item description is a unit multiplier.

Microchip Technology Drawing C04-3199B

APPENDIX A: REVISION HISTORY

Revision A (January 2019)

- Initial creation of DSC60xxB Microchip data sheet DS20006133A.

Revision B (November 2022)

- Added the 7.0 mm x 5.0 mm VDFN, 5.0 mm x 3.2 mm VDFN, and 3.2 mm x 2.5 mm VDFN package options throughout the document.
- Updated the previously existing package outline drawings to their most current versions.

DSC60XXB

NOTES:

PRODUCT IDENTIFICATION SYSTEM

To order or obtain information, e.g., on pricing or delivery, contact your local Microchip representative or sales office.

PART NO.	X	X	X	X	X	X	X - XXX.XXXX	X
Device	Pin 1 Definition	Output Drive Strength	Package	Temperature Range	Frequency Stability	Revision	Frequency	Tape and Reel
Device:	DSC60:	Ultra-Low Power MEMS Oscillator						
Pin 1 Definition:	Selection	Pin 1	Internal Pull-Up Register					
	0	OE	Pull-up					
	1	STDBY	Pull-up					
	2	FS	Pull-up					
	4	OE	None					
	5	STDBY	None					
	6	FS	None					
Output Drive Strength:	1	Standard						
	3	Low						
Package:	A	=	4-Lead 7.0 mm x 5.0 mm VDFN					
	B	=	4-Lead 5.0 mm x 3.2 mm VDFN					
	C	=	4-Lead 3.2 mm x 2.5 mm VDFN					
	J	=	4-Lead 2.5 mm x 2.0 mm VLGA					
	M	=	4-Lead 2.0 mm x 1.6 mm VFLGA					
	H	=	4-Lead 1.6 mm x 1.2 mm VFLGA					
Temperature Range:	A	=	-40°C to +125°C (Automotive)					
	L	=	-40°C to +105°C (Extended Industrial)					
	I	=	-40°C to +85°C (Industrial)					
	E	=	-20°C to +70°C (Extended Commercial)					
Frequency Stability:	1	=	± 50 ppm					
	2	=	± 25 ppm					
	3	=	± 20 ppm					
Revision:	B	=	Revision B					
Frequency:	xxx.xxxx	=	User-Defined Frequency between 001.0000 MHz and 80.0000 MHz					
	xxxkxxx	=	User-Defined Frequency between 002.000 kHz and 999.999 kHz					
	xxxx	=	Frequency configuration code when pin 1 = FS. Configure the part online through ClockWorks® configurator.					
Tape and Reel:	<blank>	=	50/Tube, 100 pce. min. (A Package Option)					
	<blank>	=	72/Tube, 144 pce. min. (B Package Option)					
	<blank>	=	110/Tube (C Package Option)					
	<blank>	=	140/Tube (J Package Option)					
	<blank>	=	100/Bag (M & H Package Options)					
	T	=	1,000/Reel					
	B	=	3,000/Reel					

Examples:

- a) DSC6013JI3B-80.0000:
Ultra-Low Power MEMS Oscillator, Pin1 = STDBY with Internal Pull-Up, Low Drive Strength, 4-Lead 2.5 mm x 2.0 mm VLGA, Industrial Temperature, ±20 ppm Stability, Revision B, 80 MHz Frequency, 140/Tube
- b) DSC6001HE1B-016.0000T:
Ultra-Low Power MEMS Oscillator, Pin1 = OE with Internal Pull-Up, Standard Drive Strength, 4-Lead 1.6 mm x 1.2 mm VFLGA, Extended Commercial Temp., ±50 ppm Stability, Revision B, 16 MHz Frequency, 1,000/Reel
- c) DSC6021MI2B-005Q:
Ultra-Low Power MEMS Oscillator, Pin1 = Freq. Select with Internal Pull-Up, Standard Drive Strength, 4-Lead 2.0 mm x 1.6 mm VFLGA, Industrial Temperature, ±25 ppm Stability, Revision B, Two Frequencies Configured through ClockWorks, 100/Bag

Note 1: Tape and Reel identifier only appears in the catalog part number description. This identifier is used for ordering purposes and is not printed on the device package. Check with your Microchip Sales Office for package availability with the Tape and Reel option.

Note 1: Please visit Microchip ClockWorks® Configurator Website to configure the part number for customized frequency. <http://clockworks.microchip.com/timing/>.

DSC60XXB

NOTES:

Note the following details of the code protection feature on Microchip products:

- Microchip products meet the specifications contained in their particular Microchip Data Sheet.
- Microchip believes that its family of products is secure when used in the intended manner, within operating specifications, and under normal conditions.
- Microchip values and aggressively protects its intellectual property rights. Attempts to breach the code protection features of Microchip product is strictly prohibited and may violate the Digital Millennium Copyright Act.
- Neither Microchip nor any other semiconductor manufacturer can guarantee the security of its code. Code protection does not mean that we are guaranteeing the product is "unbreakable" Code protection is constantly evolving. Microchip is committed to continuously improving the code protection features of our products.

This publication and the information herein may be used only with Microchip products, including to design, test, and integrate Microchip products with your application. Use of this information in any other manner violates these terms. Information regarding device applications is provided only for your convenience and may be superseded by updates. It is your responsibility to ensure that your application meets with your specifications. Contact your local Microchip sales office for additional support or, obtain additional support at <https://www.microchip.com/en-us/support/design-help/client-support-services>.

THIS INFORMATION IS PROVIDED BY MICROCHIP "AS IS". MICROCHIP MAKES NO REPRESENTATIONS OR WARRANTIES OF ANY KIND WHETHER EXPRESS OR IMPLIED, WRITTEN OR ORAL, STATUTORY OR OTHERWISE, RELATED TO THE INFORMATION INCLUDING BUT NOT LIMITED TO ANY IMPLIED WARRANTIES OF NON-INFRINGEMENT, MERCHANTABILITY, AND FITNESS FOR A PARTICULAR PURPOSE, OR WARRANTIES RELATED TO ITS CONDITION, QUALITY, OR PERFORMANCE.

IN NO EVENT WILL MICROCHIP BE LIABLE FOR ANY INDIRECT, SPECIAL, PUNITIVE, INCIDENTAL, OR CONSEQUENTIAL LOSS, DAMAGE, COST, OR EXPENSE OF ANY KIND WHATSOEVER RELATED TO THE INFORMATION OR ITS USE, HOWEVER CAUSED, EVEN IF MICROCHIP HAS BEEN ADVISED OF THE POSSIBILITY OR THE DAMAGES ARE FORESEEABLE. TO THE FULLEST EXTENT ALLOWED BY LAW, MICROCHIP'S TOTAL LIABILITY ON ALL CLAIMS IN ANY WAY RELATED TO THE INFORMATION OR ITS USE WILL NOT EXCEED THE AMOUNT OF FEES, IF ANY, THAT YOU HAVE PAID DIRECTLY TO MICROCHIP FOR THE INFORMATION.

Use of Microchip devices in life support and/or safety applications is entirely at the buyer's risk, and the buyer agrees to defend, indemnify and hold harmless Microchip from any and all damages, claims, suits, or expenses resulting from such use. No licenses are conveyed, implicitly or otherwise, under any Microchip intellectual property rights unless otherwise stated.

For information regarding Microchip's Quality Management Systems, please visit www.microchip.com/quality.

Trademarks

The Microchip name and logo, the Microchip logo, Adaptec, AVR, AVR logo, AVR Freaks, BesTime, BitCloud, CryptoMemory, CryptoRF, dsPIC, flexPWR, HELDO, IGL00, JukeBlox, KeeLoq, Klear, LANCheck, LinkMD, maXStylus, maXTouch, MediaLB, megaAVR, Microsemi, Microsemi logo, MOST, MOST logo, MPLAB, OptoLyzer, PIC, picoPower, PICSTART, PIC32 logo, PolarFire, Prochip Designer, QTouch, SAM-BA, SenGenuity, SpyNIC, SST, SST Logo, SuperFlash, Symmetricom, SyncServer, Tachyon, TimeSource, tinyAVR, UNI/O, Vectron, and XMEGA are registered trademarks of Microchip Technology Incorporated in the U.S.A. and other countries.

AgileSwitch, APT, ClockWorks, The Embedded Control Solutions Company, EtherSynch, Flashtec, Hyper Speed Control, HyperLight Load, Libero, motorBench, mTouch, Powermite 3, Precision Edge, ProASIC, ProASIC Plus, ProASIC Plus logo, Quiet-Wire, SmartFusion, SyncWorld, Temux, TimeCesium, TimeHub, TimePictra, TimeProvider, TrueTime, and ZL are registered trademarks of Microchip Technology Incorporated in the U.S.A.

Adjacent Key Suppression, AKS, Analog-for-the-Digital Age, Any Capacitor, AnyIn, AnyOut, Augmented Switching, BlueSky, BodyCom, Clockstudio, CodeGuard, CryptoAuthentication, CryptoAutomotive, CryptoCompanion, CryptoController, dsPICDEM, dsPICDEM.net, Dynamic Average Matching, DAM, ECAN, Espresso T1S, EtherGREEN, GridTime, IdealBridge, In-Circuit Serial Programming, ICSP, INICnet, Intelligent Paralleling, IntelliMOS, Inter-Chip Connectivity, JitterBlocker, Knob-on-Display, KoD, maxCrypto, maxView, memBrain, Mindi, MiWi, MPASM, MPF, MPLAB Certified logo, MPLIB, MPLINK, MultiTRAK, NetDetach, Omniscient Code Generation, PICDEM, PICDEM.net, PICkit, PICtail, PowerSmart, PureSilicon, QMatrix, REAL ICE, Ripple Blocker, RTAX, RTG4, SAM-ICE, Serial Quad I/O, simpleMAP, SimpliPHY, SmartBuffer, SmartHLS, SMART-I.S., storClad, SQI, SuperSwitcher, SuperSwitcher II, Switchtec, SynchroPHY, Total Endurance, Trusted Time, TSHARC, USBCheck, VariSense, VectorBlox, VeriPHY, ViewSpan, WiperLock, XpressConnect, and ZENA are trademarks of Microchip Technology Incorporated in the U.S.A. and other countries.

SQTP is a service mark of Microchip Technology Incorporated in the U.S.A.

The Adaptec logo, Frequency on Demand, Silicon Storage Technology, and Symmcom are registered trademarks of Microchip Technology Inc. in other countries.

GestIC is a registered trademark of Microchip Technology Germany II GmbH & Co. KG, a subsidiary of Microchip Technology Inc., in other countries.

All other trademarks mentioned herein are property of their respective companies.

© 2019 - 2022, Microchip Technology Incorporated and its subsidiaries.

All Rights Reserved.

ISBN: 978-1-6683-1593-4



MICROCHIP

Worldwide Sales and Service

AMERICAS

Corporate Office

2355 West Chandler Blvd.

Chandler, AZ 85224-6199

Tel: 480-792-7200

Fax: 480-792-7277

Technical Support:

<http://www.microchip.com/support>

Web Address:

www.microchip.com

Atlanta

Duluth, GA

Tel: 678-957-9614

Fax: 678-957-1455

Austin, TX

Tel: 512-257-3370

Boston

Westborough, MA

Tel: 774-760-0087

Fax: 774-760-0088

Chicago

Itasca, IL

Tel: 630-285-0071

Fax: 630-285-0075

Dallas

Addison, TX

Tel: 972-818-7423

Fax: 972-818-2924

Detroit

Novi, MI

Tel: 248-848-4000

Houston, TX

Tel: 281-894-5983

Indianapolis

Noblesville, IN

Tel: 317-773-8323

Fax: 317-773-5453

Tel: 317-536-2380

Los Angeles

Mission Viejo, CA

Tel: 949-462-9523

Fax: 949-462-9608

Tel: 951-273-7800

Raleigh, NC

Tel: 919-844-7510

New York, NY

Tel: 631-435-6000

San Jose, CA

Tel: 408-735-9110

Tel: 408-436-4270

Canada - Toronto

Tel: 905-695-1980

Fax: 905-695-2078

ASIA/PACIFIC

Australia - Sydney

Tel: 61-2-9868-6733

China - Beijing

Tel: 86-10-8569-7000

China - Chengdu

Tel: 86-28-8665-5511

China - Chongqing

Tel: 86-23-8980-9588

China - Dongguan

Tel: 86-769-8702-9880

China - Guangzhou

Tel: 86-20-8755-8029

China - Hangzhou

Tel: 86-571-8792-8115

China - Hong Kong SAR

Tel: 852-2943-5100

China - Nanjing

Tel: 86-25-8473-2460

China - Qingdao

Tel: 86-532-8502-7355

China - Shanghai

Tel: 86-21-3326-8000

China - Shenyang

Tel: 86-24-2334-2829

China - Shenzhen

Tel: 86-755-8864-2200

China - Suzhou

Tel: 86-186-6233-1526

China - Wuhan

Tel: 86-27-5980-5300

China - Xian

Tel: 86-29-8833-7252

China - Xiamen

Tel: 86-592-2388138

China - Zhuhai

Tel: 86-756-3210040

ASIA/PACIFIC

India - Bangalore

Tel: 91-80-3090-4444

India - New Delhi

Tel: 91-11-4160-8631

India - Pune

Tel: 91-20-4121-0141

Japan - Osaka

Tel: 81-6-6152-7160

Japan - Tokyo

Tel: 81-3-6880-3770

Korea - Daegu

Tel: 82-53-744-4301

Korea - Seoul

Tel: 82-2-554-7200

Malaysia - Kuala Lumpur

Tel: 60-3-7651-7906

Malaysia - Penang

Tel: 60-4-227-8870

Philippines - Manila

Tel: 63-2-634-9065

Singapore

Tel: 65-6334-8870

Taiwan - Hsin Chu

Tel: 886-3-577-8366

Taiwan - Kaohsiung

Tel: 886-7-213-7830

Taiwan - Taipei

Tel: 886-2-2508-8600

Thailand - Bangkok

Tel: 66-2-694-1351

Vietnam - Ho Chi Minh

Tel: 84-28-5448-2100

EUROPE

Austria - Wels

Tel: 43-7242-2244-39

Fax: 43-7242-2244-393

Denmark - Copenhagen

Tel: 45-4485-5910

Fax: 45-4485-2829

Finland - Espoo

Tel: 358-9-4520-820

France - Paris

Tel: 33-1-69-53-63-20

Fax: 33-1-69-30-90-79

Germany - Garching

Tel: 49-8931-9700

Germany - Haan

Tel: 49-2129-3766400

Germany - Heilbronn

Tel: 49-7131-72400

Germany - Karlsruhe

Tel: 49-721-625370

Germany - Munich

Tel: 49-89-627-144-0

Fax: 49-89-627-144-44

Germany - Rosenheim

Tel: 49-8031-354-560

Israel - Ra'anana

Tel: 972-9-744-7705

Italy - Milan

Tel: 39-0331-742611

Fax: 39-0331-466781

Italy - Padova

Tel: 39-049-7625286

Netherlands - Drunen

Tel: 31-416-690399

Fax: 31-416-690340

Norway - Trondheim

Tel: 47-7288-4388

Poland - Warsaw

Tel: 48-22-3325737

Romania - Bucharest

Tel: 40-21-407-87-50

Spain - Madrid

Tel: 34-91-708-08-90

Fax: 34-91-708-08-91

Sweden - Gothenberg

Tel: 46-31-704-60-40

Sweden - Stockholm

Tel: 46-8-5090-4654

UK - Wokingham

Tel: 44-118-921-5800

Fax: 44-118-921-5820