



Product Change Notification / SYST-03SWVP236

Date:

06-Dec-2021

Product Category:

Clock and Timing - Oscillators, Microprocessors

PCN Type:

Document Change

Notification Subject:

Data Sheet - DSC61xxB Data Sheet Revision

Affected CPNs:

[SYST-03SWVP236_Affected_CPN_12062021.pdf](#)
[SYST-03SWVP236_Affected_CPN_12062021.csv](#)

Notification Text:

SYST-03SWVP236

Microchip has released a new Product Documents for the DSC61xxB Data Sheet of devices. If you are using one of these devices please read the document located at [DSC61xxB Data Sheet](#).

Notification Status: Final

Description of Change: Replaced all three package drawings with the most current versions.

Impacts to Data Sheet: See above details.

Reason for Change: To Improve Productivity

Change Implementation Status: Complete

Date Document Changes Effective: 06 December 2021

NOTE: Please be advised that this is a change to the document only the product has not been changed.

Markings to Distinguish Revised from Unrevised Devices: N/A

Attachments:

[DSC61xxB Data Sheet](#)

Please contact your local [Microchip sales office](#) with questions or concerns regarding this notification.

Terms and Conditions:

If you wish to receive Microchip PCNs via email please register for our PCN email service at our [PCN home page](#) select register then fill in the required fields. You will find instructions about registering for Microchips PCN email service in the [PCN FAQ](#) section.

If you wish to change your PCN profile, including opt out, please go to the [PCN home page](#) select login and sign into your myMicrochip account. Select a profile option from the left navigation bar and make the applicable selections.

Affected Catalog Part Numbers (CPN)

DSC6101HA2B-072.0000
DSC6101HA3B-PROG
DSC6101HA2B-072.5000
DSC6101HA3B-024.0000
DSC6111HA3B-024.0000
DSC6111HA2B-024.0000
DSC6101MA3B-019.2000
DSC6101MA3B-027.0000
DSC6101MA3B-PROG
DSC6111MA3B-050.0000
DSC6101MA2B-020.0000
DSC6111MA1B-033.0000
DSC6101MA3B-016.6666
DSC6111MA1B-033.3300
DSC6101MA3B-026.0000
DSC6101MA1B-008.0000
DSC6101JA2B-025.0000
DSC6101JA2B-027.0000
DSC6101JA3B-PROG
DSC6102JA1B-125K000
DSC6102JA1B-010K000
DSC6101JA2B-050.0000
DSC6101JA3B-024.0000
DSC6101HI3B-019.2000
DSC6112HI2B-001.0000
DSC6111HI2B-032K768
DSC6111HI2B-250K000
DSC6111HI2B-432K000
DSC6111HI2B-720K000
DSC6112HI2B-032K768
DSC6112HI2B-250K000
DSC6112HI2B-432K000
DSC6112HI2B-720K000
DSC6111HI2B-004K000
DSC6112HI2B-004K000
DSC6111HI3B-010.0000
DSC6111HI1B-032K768
DSC6101HI2B-080.0000
DSC6102HI2B-025.0000
DSC6111HI2B-012.0000
DSC6101HI2B-010.0000
DSC6111HI1B-013.5600
DSC6111HI1B-080.0000
DSC6101HI1B-007K085
DSC6101HI3B-100.0000
DSC6101HI1B-012.0000

DSC6112HI2B-025.0000
DSC6151HI2B-025.0000
DSC6151HI2B-027.0000
DSC6102HI2B-024.0000
DSC6111HI3B-027.0000
DSC6111HI3B-074.2500
DSC6111HI2B-100.0000
DSC6101MI2B-048.0000
DSC6111MI2B-027.0000
DSC6111MI2B-024.5454
DSC6101MI2B-006.1679
DSC6111MI2B-006.1679
DSC6102MI2B-125K000
DSC6101MI2B-008.0000
DSC6111MI2B-025.0000
DSC6102MI3B-038.4000
DSC6111MI3B-033.3333
DSC6101MI2B-024.0000
DSC6101MI1B-050.0000
DSC6101MI1B-024.0000
DSC6102MI1B-500K000
DSC6101MI1B-019.2000
DSC6111MI3B-025.0000
DSC6102MI3B-080.0000
DSC6102MI2B-027.0000
DSC6101MI2B-025.0000
DSC6112MI2B-025.0000
DSC6112MI2B-014.7456
DSC6101MI1B-027.0000
DSC6102JI2B-100.0000
DSC6101JI3B-075.0000
DSC6101JI1B-024.0000
DSC6111JI1B-024.0000
DSC6111JI2B-032K768
DSC6111JI2B-250K000
DSC6111JI2B-432K000
DSC6111JI2B-720K000
DSC6112JI2B-001.0000
DSC6112JI2B-032K768
DSC6112JI2B-250K000
DSC6112JI2B-432K000
DSC6112JI2B-720K000
DSC6111JI2B-004K000
DSC6112JI2B-004K000
DSC6101JI2B-025.0000
DSC6102JI2B-025.0000
DSC6102JI2B-027.0000
DSC6111JI1B-025.0000
DSC6111JI2B-024.0000

DSC6101JI3B-439K000
DSC6112JI1B-050.0000
DSC6101JI2B-027.0000
DSC6111JI1B-098.3040
DSC6111JI2B-100K000
DSC6111JI3B-100.0000
DSC6101JI2B-100.0000
DSC6101JI2B-024.0000
DSC6101JI2B-050.0000
DSC6101JI3B-100.0000
DSC6101JI3B-485K000
DSC6101JI2B-020.0000
DSC6111JI3B-012.0000
DSC6101JI1B-007K085
DSC6121JI2B-01BB
DSC6102JI3B-001.6800
DSC6101JI2B-040K000
DSC6101JI2B-012.2880
DSC6111JI1B-200K000
DSC6102JI1B-060.0000
DSC6101JI2B-019.2000
DSC6101JI1B-048.0000
DSC6111JI1B-028.1250
DSC6112JI2B-028.1250
DSC6111JI1B-008.0000
DSC6121JI3B-01GP
DSC6111JI3B-019.2000
DSC6102JI1B-500K000
DSC6101JI1B-019.2000
DSC6112JI2B-024.0000
DSC6101JI3B-038.4000
DSC6101JI2B-012.0000
DSC6101JI1B-080.0000
DSC6121JI2B-01MH
DSC6101HL3B-025.0000
DSC6101HL3B-027.0000
DSC6102HL2B-072.5000
DSC6101HL2B-072.5000
DSC6101HL2B-072.0000
DSC6111HL1B-032K768
DSC6101HL3B-024.0000
DSC6111HL1B-010.0000
DSC6111HL1B-014.7456
DSC6111HL1B-024.0000
DSC6111HE1B-050.0000
DSC6101HE2B-012.0000
DSC6101ML2B-066.6666
DSC6101ML3B-025.0000
DSC6101ML3B-027.0000

DSC6101ML3B-016.6666
DSC6101ML3B-014.7456
DSC6101ML2B-072.0000
DSC6111ME1B-012.0000
DSC6101ML3B-032.0000
DSC6101JL2B-033.3333
DSC6101JL3B-038.4000
DSC6101JL3B-050.0000
DSC6101JL2B-026.0000
DSC6111JE1B-033.3333
DSC6121JL2B-015G
DSC6111JL2B-008.0000
DSC6121JL2B-0170
DSC6101JL3B-025.0000
DSC6121JE1B-0198
DSC6111JE1B-033.0000
DSC6101JL2B-033.0000
DSC6101JE3B-024.0000
DSC6101JE1B-024.0000
DSC6101JE1B-050.0000
DSC6111JE2B-100.0000
DSC6101JL3B-027.0000
DSC6102JL1B-088.0000
DSC6102JL1B-033.0000
DSC6112JE1B-100.0000
DSC6121JE1B-01HD
DSC6121JE1B-01HE
DSC6121JE1B-01HG
DSC6101JE1B-030.0000
DSC6101JE1B-033.0000
DSC6101JE1B-022.4000
DSC6101JE3B-032K768
DSC6101HL3B-025.0000T
DSC6101HL3B-027.0000T
DSC6102HL2B-072.5000T
DSC6101HL2B-072.5000T
DSC6101HL2B-072.0000T
DSC6111HL1B-032K768T
DSC6101HL3B-024.0000T
DSC6111HL1B-010.0000T
DSC6111HL1B-014.7456T
DSC6111HL1B-024.0000T
DSC6111HE1B-050.0000T
DSC6101HE2B-012.0000T
DSC6101ML2B-066.6666T
DSC6101ML3B-025.0000T
DSC6101ML3B-027.0000T
DSC6101ML3B-016.6666T
DSC6101ML3B-014.7456T

DSC6101ML2B-072.0000T
DSC6111ME1B-012.0000T
DSC6101ML3B-032.0000T
DSC6101JL2B-033.3333T
DSC6101JL3B-038.4000T
DSC6101JL3B-050.0000T
DSC6101JL2B-026.0000T
DSC6111JE1B-033.3333T
DSC6121JL2B-015GT
DSC6111JL2B-008.0000T
DSC6121JL2B-0170T
DSC6101JL3B-025.0000T
DSC6121JE1B-0198T
DSC6111JE1B-033.0000T
DSC6101JL2B-033.0000T
DSC6101JE3B-024.0000T
DSC6101JE1B-024.0000T
DSC6101JE1B-050.0000T
DSC6111JE2B-100.0000T
DSC6101JL3B-027.0000T
DSC6102JL1B-088.0000T
DSC6102JL1B-033.0000T
DSC6112JE1B-100.0000T
DSC6121JE1B-01HDT
DSC6121JE1B-01HET
DSC6121JE1B-01HGT
DSC6101JE1B-030.0000T
DSC6101JE1B-033.0000T
DSC6101JE1B-022.4000T
DSC6101JE3B-032K768T
DSC6101HI3B-019.2000T
DSC6112HI2B-001.0000T
DSC6111HI2B-032K768T
DSC6111HI2B-250K000T
DSC6111HI2B-432K000T
DSC6111HI2B-720K000T
DSC6112HI2B-032K768T
DSC6112HI2B-250K000T
DSC6112HI2B-432K000T
DSC6112HI2B-720K000T
DSC6111HI2B-004K000T
DSC6112HI2B-004K000T
DSC6111HI3B-010.0000T
DSC6111HI1B-032K768T
DSC6101HI2B-080.0000T
DSC6102HI2B-025.0000T
DSC6111HI2B-012.0000T
DSC6101HI2B-010.0000T
DSC6111HI1B-013.5600T

DSC6111HI1B-080.0000T
DSC6101HI1B-007K085T
DSC6101HI3B-100.0000T
DSC6101HI1B-012.0000T
DSC6112HI2B-025.0000T
DSC6151HI2B-025.0000T
DSC6151HI2B-027.0000T
DSC6102HI2B-024.0000T
DSC6111HI3B-027.0000T
DSC6111HI3B-074.2500T
DSC6111HI2B-100.0000T
DSC6101MI2B-048.0000T
DSC6111MI2B-027.0000T
DSC6111MI2B-024.5454T
DSC6101MI2B-006.1679T
DSC6111MI2B-006.1679T
DSC6102MI2B-125K000T
DSC6101MI2B-008.0000T
DSC6111MI2B-025.0000T
DSC6102MI3B-038.4000T
DSC6111MI3B-033.3333T
DSC6101MI2B-024.0000T
DSC6101MI1B-050.0000T
DSC6101MI1B-024.0000T
DSC6102MI1B-500K000T
DSC6101MI1B-019.2000T
DSC6111MI3B-025.0000T
DSC6102MI3B-080.0000T
DSC6102MI2B-027.0000T
DSC6101MI2B-025.0000T
DSC6112MI2B-025.0000T
DSC6112MI2B-014.7456T
DSC6101MI1B-027.0000T
DSC6111MI2B-100.0000T
DSC6102JI2B-100.0000T
DSC6101JI3B-075.0000T
DSC6101JI1B-024.0000T
DSC6111JI1B-024.0000T
DSC6111JI2B-032K768T
DSC6111JI2B-250K000T
DSC6111JI2B-432K000T
DSC6111JI2B-720K000T
DSC6112JI2B-001.0000T
DSC6112JI2B-032K768T
DSC6112JI2B-250K000T
DSC6112JI2B-432K000T
DSC6112JI2B-720K000T
DSC6111JI2B-004K000T
DSC6112JI2B-004K000T

DSC6101JI2B-025.0000T
DSC6102JI2B-025.0000T
DSC6102JI2B-027.0000T
DSC6111JI1B-025.0000T
DSC6111JI2B-024.0000T
DSC6101JI3B-439K000T
DSC6112JI1B-050.0000T
DSC6101JI2B-027.0000T
DSC6111JI1B-098.3040T
DSC6111JI2B-100K000T
DSC6111JI3B-100.0000T
DSC6101JI2B-100.0000T
DSC6101JI2B-024.0000T
DSC6101JI2B-050.0000T
DSC6101JI3B-100.0000T
DSC6101JI3B-485K000T
DSC6101JI2B-020.0000T
DSC6111JI3B-012.0000T
DSC6101JI1B-007K085T
DSC6121JI2B-01BBT
DSC6102JI3B-001.6800T
DSC6101JI2B-040K000T
DSC6101JI2B-012.2880T
DSC6111JI1B-200K000T
DSC6102JI1B-060.0000T
DSC6101JI2B-019.2000T
DSC6101JI1B-048.0000T
DSC6111JI1B-028.1250T
DSC6112JI2B-028.1250T
DSC6111JI1B-008.0000T
DSC6121JI3B-01GPT
DSC6111JI3B-019.2000T
DSC6102JI1B-500K000T
DSC6101JI1B-019.2000T
DSC6112JI2B-024.0000T
DSC6101JI3B-038.4000T
DSC6101JI2B-012.0000T
DSC6101JI1B-080.0000T
DSC6121JI2B-01MHT
DSC6101HA2B-072.0000T
DSC6101HA3B-PROGT
DSC6101HA2B-072.5000T
DSC6101HA3B-024.0000T
DSC6111HA3B-024.0000T
DSC6111HA2B-024.0000T
DSC6101MA3B-019.2000T
DSC6101MA3B-027.0000T
DSC6101MA3B-PROGT
DSC6111MA3B-050.0000T

DSC6101MA2B-020.0000T
DSC6111MA1B-033.0000T
DSC6101MA3B-016.6666T
DSC6111MA1B-033.3300T
DSC6101MA3B-026.0000T
DSC6101MA1B-008.0000T
DSC6101JA2B-025.0000T
DSC6101JA2B-027.0000T
DSC6101JA3B-PROGT
DSC6102JA1B-125K000T
DSC6102JA1B-010K000T
DSC6101JA2B-050.0000T
DSC6101JA3B-024.0000T
DSC6101HA2B-072.0000
DSC6101HA3B-PROG
DSC6101HA2B-072.5000
DSC6101HA3B-024.0000
DSC6111HA3B-024.0000
DSC6111HA2B-024.0000
DSC6121HA3B-01QJ
DSC6101HA3B-025.0000
DSC6101HA3B-050.0000
DSC6101HA1B-025.0000
DSC6101MA3B-019.2000
DSC6101MA3B-027.0000
DSC6101MA3B-PROG
DSC6111MA3B-050.0000
DSC6101MA2B-020.0000
DSC6111MA1B-033.0000
DSC6101MA3B-016.6666
DSC6111MA1B-033.3300
DSC6101MA3B-026.0000
DSC6101MA1B-008.0000
DSC6121MA3B-01QJ
DSC6102MA2B-008.0000
DSC6101MA3B-032.0000
DSC6101JA2B-025.0000
DSC6101JA3B-PROG
DSC6102JA1B-125K000
DSC6102JA1B-010K000
DSC6101JA2B-050.0000
DSC6101JA3B-024.0000
DSC6101JA2B-027.0000
DSC6101JA1B-020.0000
DSC6101HI3B-019.2000
DSC6112HI2B-001.0000
DSC6111HI2B-032K768
DSC6111HI2B-250K000
DSC6111HI2B-432K000

DSC6111HI2B-720K000
DSC6112HI2B-032K768
DSC6112HI2B-250K000
DSC6112HI2B-432K000
DSC6112HI2B-720K000
DSC6111HI2B-004K000
DSC6112HI2B-004K000
DSC6111HI3B-010.0000
DSC6111HI1B-032K768
DSC6101HI2B-080.0000
DSC6102HI2B-025.0000
DSC6111HI2B-012.0000
DSC6101HI2B-010.0000
DSC6111HI1B-013.5600
DSC6111HI1B-080.0000
DSC6101HI1B-007K085
DSC6101HI3B-100.0000
DSC6101HI1B-012.0000
DSC6112HI2B-025.0000
DSC6111HI3B-027.0000
DSC6111HI3B-074.2500
DSC6151HI2B-025.0000
DSC6151HI2B-027.0000
DSC6102HI2B-024.0000
DSC6111HI3B-025.0000
DSC6101HI1B-005.0000
DSC6111HI2B-100.0000
DSC6112HI2B-100.0000
DSC6101MI2B-048.0000
DSC6111MI2B-027.0000
DSC6111MI2B-024.5454
DSC6101MI2B-006.1679
DSC6111MI2B-006.1679
DSC6102MI2B-125K000
DSC6101MI2B-008.0000
DSC6111MI2B-025.0000
DSC6102MI3B-038.4000
DSC6111MI3B-033.3333
DSC6101MI2B-024.0000
DSC6101MI1B-050.0000
DSC6101MI1B-024.0000
DSC6102MI1B-500K000
DSC6101MI1B-019.2000
DSC6111MI3B-025.0000
DSC6102MI3B-080.0000
DSC6101MI1B-027.0000
DSC6102MI2B-027.0000
DSC6101MI2B-025.0000
DSC6112MI2B-025.0000

DSC6112MI2B-014.7456
DSC6112MI3B-060.0000
DSC6121MI2B-01MP
DSC6122MI2B-01MQ
DSC6101MI1B-020.0000
DSC6112MI1B-074.2500
DSC6101MI3B-025.0000
DSC6101MI2B-013.5600
DSC6101MI1B-033.3300
DSC6101MI1B-100.0000
DSC6102MI2B-074.2500
DSC6111MI2B-100.0000
DSC6102MI2B-008.0000
DSC6102MI3B-030.0000
DSC6102MI2B-030.0000
DSC6102JI2B-100.0000
DSC6101JI3B-075.0000
DSC6101JI1B-024.0000
DSC6111JI1B-024.0000
DSC6111JI2B-032K768
DSC6111JI2B-250K000
DSC6111JI2B-432K000
DSC6111JI2B-720K000
DSC6112JI2B-001.0000
DSC6112JI2B-032K768
DSC6112JI2B-250K000
DSC6112JI2B-432K000
DSC6112JI2B-720K000
DSC6111JI2B-004K000
DSC6112JI2B-004K000
DSC6101JI2B-025.0000
DSC6102JI2B-025.0000
DSC6102JI2B-027.0000
DSC6111JI1B-025.0000
DSC6111JI2B-024.0000
DSC6101JI3B-439K000
DSC6112JI1B-050.0000
DSC6101JI2B-027.0000
DSC6111JI1B-098.3040
DSC6111JI2B-100K000
DSC6111JI3B-100.0000
DSC6101JI2B-100.0000
DSC6101JI2B-024.0000
DSC6101JI2B-050.0000
DSC6101JI3B-100.0000
DSC6101JI3B-485K000
DSC6101JI2B-020.0000
DSC6111JI3B-012.0000
DSC6101JI1B-007K085

DSC6121JI2B-01BB
DSC6102JI3B-001.6800
DSC6101JI2B-040K000
DSC6101JI2B-012.2880
DSC6111JI1B-200K000
DSC6102JI1B-060.0000
DSC6101JI2B-019.2000
DSC6101JI1B-048.0000
DSC6111JI1B-028.1250
DSC6112JI2B-028.1250
DSC6111JI1B-008.0000
DSC6121JI3B-01GP
DSC6111JI3B-019.2000
DSC6102JI1B-500K000
DSC6101JI1B-019.2000
DSC6112JI2B-024.0000
DSC6101JI3B-038.4000
DSC6101JI2B-012.0000
DSC6101JI1B-080.0000
DSC6121JI2B-01MH
DSC6111JI2B-100.0000
DSC6111JI2B-074.2500
DSC6111JI2B-027.0000
DSC6102JI1B-080.0000
DSC6101JI2B-037.1250
DSC6111JI2B-025.0000
DSC6112JI1B-060.0000
DSC6101JI2B-026.0000
DSC6101JI1B-020.0000
DSC6111JI2B-024.8060
DSC6102JI1B-024.0000
DSC6102JI2B-072.0000
DSC6111JI3B-024.8060
DSC6101JI2B-016.7772
DSC6101JI3B-048.0000
DSC6101JI2B-032K768
DSC6101JI2B-049.1520
DSC6101JI2B-045.1584
DSC6101JI2B-048.0000
DSC6101HL3B-025.0000
DSC6101HL3B-027.0000
DSC6102HL2B-072.5000
DSC6101HL2B-072.5000
DSC6101HL2B-072.0000
DSC6111HL1B-032K768
DSC6101HL3B-024.0000
DSC6111HL1B-010.0000
DSC6111HL1B-014.7456
DSC6111HL1B-024.0000

DSC6111HE1B-050.0000
DSC6111HL3B-027.0000
DSC6111HL3B-074.2500
DSC6122HE3B-01QK
DSC6111HL3B-060.0000
DSC6101HE2B-012.0000
DSC6101ML2B-066.6666
DSC6101ML3B-025.0000
DSC6101ML3B-027.0000
DSC6101ML3B-016.6666
DSC6101ML3B-014.7456
DSC6101ML2B-072.0000
DSC6111ME1B-012.0000
DSC6101ML3B-032.0000
DSC6161ME2B-01Q6
DSC6121ML3B-01QH
DSC6111ML3B-060.0000
DSC6101ME2B-002.5000
DSC6101ME3B-485K000
DSC6101ME1B-026.0000
DSC6102ML2B-008.0000
DSC6101JL2B-033.3333
DSC6101JL3B-038.4000
DSC6101JL3B-050.0000
DSC6101JL2B-026.0000
DSC6111JE1B-033.3333
DSC6121JL2B-015G
DSC6111JL2B-008.0000
DSC6121JL2B-0170
DSC6101JL3B-025.0000
DSC6121JE1B-0198
DSC6111JE1B-033.0000
DSC6101JL2B-033.0000
DSC6101JE3B-024.0000
DSC6101JE1B-024.0000
DSC6101JE1B-050.0000
DSC6111JE2B-100.0000
DSC6101JL3B-027.0000
DSC6102JL1B-088.0000
DSC6102JL1B-033.0000
DSC6112JE1B-100.0000
DSC6121JE1B-01HD
DSC6121JE1B-01HE
DSC6121JE1B-01HG
DSC6101JE1B-030.0000
DSC6101JE1B-033.0000
DSC6101JE3B-032K768
DSC6101JE1B-022.4000
DSC6121JE2B-01P0

DSC6152JL3B-027.0000
DSC6101JE3B-002.0972
DSC6111JE2B-025.0000
DSC6111JE1B-025.0000
DSC6121JE2B-01QU
DSC6111JL3B-014.6400
DSC6111JL3B-013.9122
DSC6101JE3B-485K000
DSC6101HL3B-025.0000T
DSC6101HL3B-027.0000T
DSC6102HL2B-072.5000T
DSC6101HL2B-072.5000T
DSC6101HL2B-072.0000T
DSC6111HL1B-032K768T
DSC6101HL3B-024.0000T
DSC6111HL1B-010.0000T
DSC6111HL1B-014.7456T
DSC6111HL1B-024.0000T
DSC6111HE1B-050.0000T
DSC6111HL3B-027.0000T
DSC6111HL3B-074.2500T
DSC6122HE3B-01QKT
DSC6111HL3B-060.0000T
DSC6101HE2B-012.0000T
DSC6101ML2B-066.6666T
DSC6101ML3B-025.0000T
DSC6101ML3B-027.0000T
DSC6101ML3B-016.6666T
DSC6101ML3B-014.7456T
DSC6101ML2B-072.0000T
DSC6111ME1B-012.0000T
DSC6101ML3B-032.0000T
DSC6161ME2B-01Q6T
DSC6121ML3B-01QHT
DSC6111ML3B-060.0000T
DSC6101ME2B-002.5000T
DSC6101ME3B-485K000T
DSC6101ME1B-026.0000T
DSC6102ML2B-008.0000T
DSC6101JL2B-033.3333T
DSC6101JL3B-038.4000T
DSC6101JL3B-050.0000T
DSC6101JL2B-026.0000T
DSC6111JE1B-033.3333T
DSC6121JL2B-015GT
DSC6111JL2B-008.0000T
DSC6121JL2B-0170T
DSC6101JL3B-025.0000T
DSC6121JE1B-0198T

DSC6111JE1B-033.0000T
DSC6101JL2B-033.0000T
DSC6101JE3B-024.0000T
DSC6101JE1B-024.0000T
DSC6101JE1B-050.0000T
DSC6111JE2B-100.0000T
DSC6101JL3B-027.0000T
DSC6102JL1B-088.0000T
DSC6102JL1B-033.0000T
DSC6112JE1B-100.0000T
DSC6121JE1B-01HDT
DSC6121JE1B-01HET
DSC6121JE1B-01HGT
DSC6101JE1B-030.0000T
DSC6101JE1B-033.0000T
DSC6101JE3B-032K768T
DSC6101JE1B-022.4000T
DSC6121JE2B-01POT
DSC6152JL3B-027.0000T
DSC6101JE3B-002.0972T
DSC6111JE2B-025.0000T
DSC6111JE1B-025.0000T
DSC6121JE2B-01QUT
DSC6111JL3B-014.6400T
DSC6111JL3B-013.9122T
DSC6101JE3B-485K000T
DSC6101HI3B-019.2000T
DSC6112HI2B-001.0000T
DSC6111HI2B-032K768T
DSC6111HI2B-250K000T
DSC6111HI2B-432K000T
DSC6111HI2B-720K000T
DSC6112HI2B-032K768T
DSC6112HI2B-250K000T
DSC6112HI2B-432K000T
DSC6112HI2B-720K000T
DSC6111HI2B-004K000T
DSC6112HI2B-004K000T
DSC6111HI3B-010.0000T
DSC6111HI1B-032K768T
DSC6101HI2B-080.0000T
DSC6102HI2B-025.0000T
DSC6111HI2B-012.0000T
DSC6101HI2B-010.0000T
DSC6111HI1B-013.5600T
DSC6111HI1B-080.0000T
DSC6101HI1B-007K085T
DSC6101HI3B-100.0000T
DSC6101HI1B-012.0000T

DSC6112HI2B-025.0000T
DSC6111HI3B-027.0000T
DSC6111HI3B-074.2500T
DSC6151HI2B-025.0000T
DSC6151HI2B-027.0000T
DSC6102HI2B-024.0000T
DSC6111HI3B-025.0000T
DSC6101HI1B-005.0000T
DSC6111HI2B-100.0000T
DSC6112HI2B-100.0000T
DSC6101MI2B-048.0000T
DSC6111MI2B-027.0000T
DSC6111MI2B-024.5454T
DSC6101MI2B-006.1679T
DSC6111MI2B-006.1679T
DSC6102MI2B-125K000T
DSC6101MI2B-008.0000T
DSC6111MI2B-025.0000T
DSC6102MI3B-038.4000T
DSC6111MI3B-033.3333T
DSC6101MI2B-024.0000T
DSC6101MI1B-050.0000T
DSC6101MI1B-024.0000T
DSC6102MI1B-500K000T
DSC6101MI1B-019.2000T
DSC6111MI3B-025.0000T
DSC6102MI3B-080.0000T
DSC6101MI1B-027.0000T
DSC6102MI2B-027.0000T
DSC6101MI2B-025.0000T
DSC6112MI2B-025.0000T
DSC6112MI2B-014.7456T
DSC6112MI3B-060.0000T
DSC6121MI2B-01MPT
DSC6122MI2B-01MQT
DSC6101MI1B-020.0000T
DSC6112MI1B-074.2500T
DSC6101MI3B-025.0000T
DSC6101MI2B-013.5600T
DSC6101MI1B-033.3300T
DSC6101MI1B-100.0000T
DSC6102MI2B-074.2500T
DSC6111MI2B-100.0000T
DSC6102MI2B-008.0000T
DSC6102MI3B-030.0000T
DSC6102MI2B-030.0000T
DSC6102JI2B-100.0000T
DSC6101JI3B-075.0000T
DSC6101JI1B-024.0000T

DSC6111JI1B-024.0000T
DSC6111JI2B-032K768T
DSC6111JI2B-250K000T
DSC6111JI2B-432K000T
DSC6111JI2B-720K000T
DSC6112JI2B-001.0000T
DSC6112JI2B-032K768T
DSC6112JI2B-250K000T
DSC6112JI2B-432K000T
DSC6112JI2B-720K000T
DSC6111JI2B-004K000T
DSC6112JI2B-004K000T
DSC6101JI2B-025.0000T
DSC6102JI2B-025.0000T
DSC6102JI2B-027.0000T
DSC6111JI1B-025.0000T
DSC6111JI2B-024.0000T
DSC6101JI3B-439K000T
DSC6112JI1B-050.0000T
DSC6101JI2B-027.0000T
DSC6111JI1B-098.3040T
DSC6111JI2B-100K000T
DSC6111JI3B-100.0000T
DSC6101JI2B-100.0000T
DSC6101JI2B-024.0000T
DSC6101JI2B-050.0000T
DSC6101JI3B-100.0000T
DSC6101JI3B-485K000T
DSC6101JI2B-020.0000T
DSC6111JI3B-012.0000T
DSC6101JI1B-007K085T
DSC6121JI2B-01BBT
DSC6102JI3B-001.6800T
DSC6101JI2B-040K000T
DSC6101JI2B-012.2880T
DSC6111JI1B-200K000T
DSC6102JI1B-060.0000T
DSC6101JI2B-019.2000T
DSC6101JI1B-048.0000T
DSC6111JI1B-028.1250T
DSC6112JI2B-028.1250T
DSC6111JI1B-008.0000T
DSC6121JI3B-01GPT
DSC6111JI3B-019.2000T
DSC6102JI1B-500K000T
DSC6101JI1B-019.2000T
DSC6101JI3B-038.4000T
DSC6101JI2B-012.0000T
DSC6112JI2B-024.0000T

DSC6101JI1B-080.0000T
DSC6121JI2B-01MHT
DSC6111JI2B-100.0000T
DSC6111JI2B-074.2500T
DSC6111JI2B-027.0000T
DSC6102JI1B-080.0000T
DSC6101JI2B-037.1250T
DSC6111JI2B-025.0000T
DSC6112JI1B-060.0000T
DSC6101JI2B-026.0000T
DSC6101JI1B-020.0000T
DSC6111JI2B-024.8060T
DSC6102JI1B-024.0000T
DSC6102JI2B-072.0000T
DSC6111JI3B-024.8060T
DSC6101JI2B-016.7772T
DSC6101JI3B-048.0000T
DSC6101JI2B-032K768T
DSC6101JI2B-049.1520T
DSC6101JI2B-045.1584T
DSC6101JI2B-048.0000T
DSC6101HA2B-072.0000T
DSC6101HA3B-PROGT
DSC6101HA2B-072.5000T
DSC6101HA3B-024.0000T
DSC6111HA3B-024.0000T
DSC6111HA2B-024.0000T
DSC6121HA3B-01QJT
DSC6101HA3B-025.0000T
DSC6101HA3B-050.0000T
DSC6101HA1B-025.0000T
DSC6101MA3B-019.2000T
DSC6101MA3B-027.0000T
DSC6101MA3B-PROGT
DSC6111MA3B-050.0000T
DSC6101MA2B-020.0000T
DSC6111MA1B-033.0000T
DSC6101MA3B-016.6666T
DSC6111MA1B-033.3300T
DSC6101MA3B-026.0000T
DSC6101MA1B-008.0000T
DSC6121MA3B-01QJT
DSC6102MA2B-008.0000T
DSC6101MA3B-032.0000T
DSC6101JA2B-025.0000T
DSC6101JA3B-PROGT
DSC6102JA1B-125K000T
DSC6102JA1B-010K000T
DSC6101JA2B-050.0000T

DSC6101JA3B-024.0000T

DSC6101JA2B-027.0000T

DSC6101JA1B-020.0000T

Ultra-Small, Ultra-Low Power MEMS Oscillator

Features

- Wide Frequency Range: 3.5 kHz to 100 MHz
- Ultra-Low Power Consumption: 3 mA/1 μ A (Active/Standby)
- Ultra-Small Footprints
 - 1.6 mm \times 1.2 mm
 - 2.0 mm \times 1.6 mm
 - 2.5 mm \times 2.0 mm
- Frequency Select Input Supports Two Pre-Defined Frequencies
- High Stability: ± 20 ppm, ± 25 ppm, ± 50 ppm
- Wide Temperature Range
 - Automotive: -40°C to $+125^{\circ}\text{C}$
 - Ext. Industrial: -40°C to $+105^{\circ}\text{C}$
 - Industrial: -40°C to $+85^{\circ}\text{C}$
 - Ext. Commercial: -20° to $+70^{\circ}\text{C}$
- Excellent Shock and Vibration Immunity
 - Qualified to MIL-STD-883
- High Reliability
 - 20x Better MTF Than Quartz Oscillators
- Supply Range of 1.71V to 3.63V
- Short Sample Lead Time: <2 weeks
- Lead Free & RoHS Compliant
- Automotive Version Available: DSA61xxB

Applications

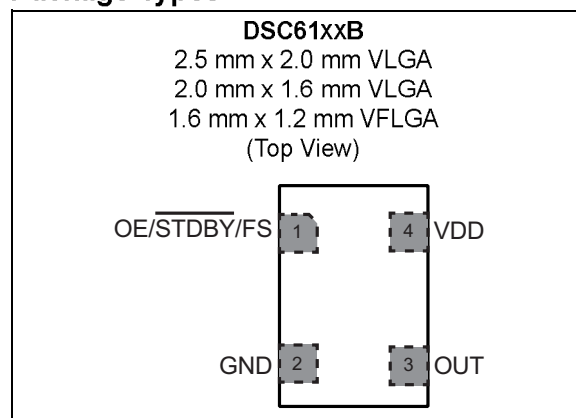
- Low Power/Portable Applications: IoT, Embedded/Smart Devices
- Consumer: Home Healthcare, Fitness Devices, Home Automation
- Industrial: Building/Factory Automation, Surveillance Camera
- Automotive (Please Refer to the DSA61xx Family)

General Description

The DSC61xxB family of MEMS oscillators combines the industry leading low power consumption and ultra-small packages with exceptional frequency stability and jitter performance over temperature. The single-output DSC61xxB MEMS oscillators are excellent choices for use as clock references in small, battery-powered devices such as wearable and Internet of Things (IoT) devices in which small size, low power consumption, and long-term reliability are paramount.

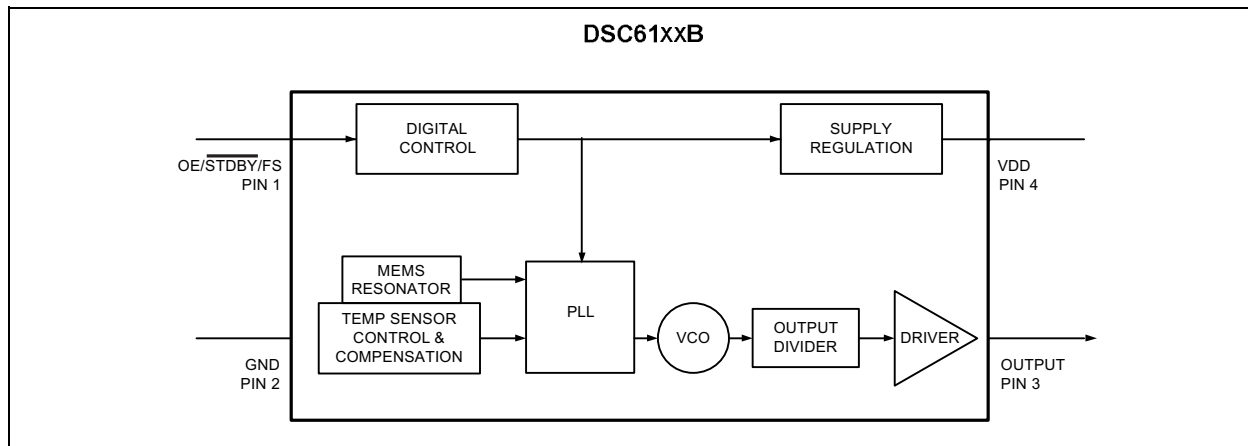
The DSC61xxB family is available in ultra-small 1.6 mm \times 1.2 mm, 2.0 mm \times 1.6 mm, and 2.5 mm \times 2.0 mm packages. These packages are “drop-in” replacements for standard 4-pin CMOS quartz crystal oscillators. The Automotive Grade AEC-Q100 qualified option is also available for this device.

Package Types



DSC61XXB

Block Diagram



1.0 ELECTRICAL CHARACTERISTICS

Absolute Maximum Ratings

Supply Voltage	-0.3V to +4.0V
Input Voltage (V_{IN})	-0.3V to $V_{DD}+0.3V$
ESD Protection	4 kV HBM, 400V MM, 2 kV CDM

ELECTRICAL CHARACTERISTICS

Electrical Characteristics: Unless otherwise indicated, $V_{DD} = 1.8V -5\%$ to $3.3V +10\%$, $T_A = -40^{\circ}C$ to $+125^{\circ}C$.						
Parameters	Sym.	Min.	Typ.	Max.	Units	Conditions
Supply Voltage	V_{DD}	1.71	—	3.63	V	Note 1
Power Supply Ramp	t_{PU}	0.1	—	100	ms	Note 8
Active Supply Current	I_{DD}	—	3.0	—	mA	$f_{OUT} = 27$ MHz, $V_{DD} = 1.8V$, No Load
Standby Supply Current	I_{STBY}	—	1	—	μA	$V_{DD} = 1.8/2.5V$, Note 2
		—	1.5	—		$V_{DD} = 3.3V$, Note 2
Output Duty Cycle	SYM	45	—	55	%	—
Frequency	f_0	0.0035	—	100	MHz	—
Frequency Stability	Δf	—	—	± 20 ± 25 ± 50	ppm	All temp ranges, Note 3
Aging	Δf	—	—	± 5	ppm	1st year @ 25°C
		—	—	± 1		Per year after first year
Startup Time	t_{SU}	—	—	1.5	ms	From 90% V_{DD} to valid clock output, $T = 25^{\circ}C$
Input Logic Levels	V_{IH}	$0.7 \times V_{DD}$	—	—	V	Input Logic High, Note 4
	V_{IL}	—	—	$0.3 \times V_{DD}$	V	Input Logic Low, Note 4
Output Disable Time	t_{DA}	—	—	200 + 2 Periods	ns	Note 5
Output Enable Time	t_{EN}	—	—	1	μs	Note 6
Enable Pull-up Resistor	—	—	300	—	k Ω	If configured, Note 7

Note 1: Pin 4 V_{DD} should be filtered with 0.1 μF capacitor.

2: Not including current through pull-up resistor on EN pin (if configured). Higher standby current seen at $>3.3V V_{DD}$.

3: Includes frequency variations due to initial tolerance, temp. and power supply voltage.

4: Input waveform must be monotonic with rise/fall time < 10 ms

5: Output Disable time takes up to two periods of the output waveform + 200 ns.

6: For parts configured with OE, not Standby.

7: Output is enabled if pad is floated or not connected.

8: Time to reach 90% of target V_{DD} . Power ramp rise must be monotonic.

DSC61XXB

ELECTRICAL CHARACTERISTICS (CONTINUED)

Electrical Characteristics: Unless otherwise indicated, $V_{DD} = 1.8V -5\%$ to $3.3V +10\%$, $T_A = -40^{\circ}C$ to $+125^{\circ}C$.

Parameters	Sym.	Min.	Typ.	Max.	Units	Conditions	
Output Logic Levels	V_{OH}	$0.8 \times V_{DD}$	—	—	V	Output Logic High, $I = 3$ mA, Std. Drive	
						Output Logic High, $I = 6$ mA, High Drive	
	V_{OL}	—	—	$0.2 \times V_{DD}$	V	Output Logic Low, $I = -3$ mA, Std. Drive	
						Output Logic Low, $I = -6$ mA, High Drive	
Output Transition Time Rise Time/Fall Time	t_{RX}/t_{FX}	—	1	1.5	ns	DSC61x2 High Drive, 20% to 80% $C_L = 15$ pF	$V_{DD} = 1.8V$
			0.5	1.0	ns		$V_{DD} = 2.5V/3.3V$
	t_{RY}/t_{FY}	—	1.2	2.0	ns	DSC61x1 Std Drive, 20% to 80% $C_L = 10$ pF	$V_{DD} = 1.8V$
			0.6	1.2	ns		$V_{DD} = 2.5V/3.3V$
Period Jitter, RMS	J_{PER}	—	8.5	—	pS_{RMS}	$f_{OUT} = 27$ MHz	$V_{DD} = 1.8V$
			7	—			$V_{DD} = 2.5V/3.3V$
Cycle-to-Cycle Jitter (Peak)	J_{Cy-Cy}	—	50	70	ps	$f_{OUT} = 27$ MHz	$V_{DD} = 1.8V$
			35	60			$V_{DD} = 2.5V/3.3V$
Period Jitter (Peak-to-Peak)	J_{PP}	—	70	—	ps	$f_{OUT} = 27$ MHz	$V_{DD} = 1.8V$
			60	—			$V_{DD} = 2.5V/3.3V$

- Note 1:** Pin 4 V_{DD} should be filtered with 0.1 μF capacitor.
- 2:** Not including current through pull-up resistor on EN pin (if configured). Higher standby current seen at $>3.3V V_{DD}$.
- 3:** Includes frequency variations due to initial tolerance, temp. and power supply voltage.
- 4:** Input waveform must be monotonic with rise/fall time < 10 ms
- 5:** Output Disable time takes up to two periods of the output waveform + 200 ns.
- 6:** For parts configured with OE, not Standby.
- 7:** Output is enabled if pad is floated or not connected.
- 8:** Time to reach 90% of target V_{DD} . Power ramp rise must be monotonic.

TEMPERATURE SPECIFICATIONS (Note 1)

Parameters	Sym.	Min.	Typ.	Max.	Units	Conditions
Temperature Ranges						
Junction Operating Temperature	T_J	-40	—	+150	°C	—
Storage Ambient Temperature Range	T_A	-55	—	+150	°C	—
Soldering Temperature	T_S	—	+260	—	°C	40 sec. max.

Note 1: The maximum allowable power dissipation is a function of ambient temperature, the maximum allowable junction temperature and the thermal resistance from junction to air (i.e., T_A , T_J , θ_{JA}). Exceeding the maximum allowable power dissipation will cause the device operating junction temperature to exceed the maximum +150°C rating. Sustained junction temperatures above +150°C can impact the device reliability.

DSC61XXB

2.0 PIN DESCRIPTIONS

The DSC61xxB is a highly configurable device and can be factory programmed in many different ways to meet the customer's needs. Microchip's ClockWorks® Configurator <http://clockworks.microchip.com/Timing/> must be used to choose the necessary options, create the final part number, data sheet, and order samples. The descriptions of the pins are listed in [Table 2-1](#).

TABLE 2-1: DSC61XXB PIN FUNCTION TABLE

Pin Number	Pin Name	Description
1 (Note 1)	OE	Output Enable: H = Active, L = Disabled (High Impedance).
	$\overline{\text{STDBY}}$	Standby: H = Device is active, L = Device is in standby (Low Power Mode).
	FS	Frequency Select: H = Output Frequency 1, L = Output Frequency 2.
2	GND	Ground.
3	Output	Oscillator clock output.
4	VDD	Power supply: 1.71V to 3.63V.

Note 1: DSC610xB/1xB/3xB has a 300 k Ω internal pull-up resistor on pin 1. DSC614xB/5xB/7xB has no internal pull-up resistor on pin 1 and needs an external pull-up or to be driven by another chip.

An explanation of the different options listed in [Table 2-1](#) follows.

2.1 Pin 1

This is a control pin and may be configured to fulfill one of three different functions. If not actively driven, a 10 k Ω pull-up resistor is recommended.

2.1.1 OUTPUT ENABLE (OE)

Pin 1 may be configured as OE. Oscillator output may be turned on and off according to the state of this pin.

2.1.2 $\overline{\text{STDBY}}$

Pin 1 may be configured as Standby. When the pin is low, both output buffer and PLL will be off and the device will enter a low power mode.

2.1.3 FREQUENCY SELECT (FS)

Pin 1 may be configured as FS. The output may be set to one of two pre-programmed frequencies. The output clock frequencies can only be set to either kHz or MHz. A combination of kHz and MHz cannot be set.

2.2 Pins 2 through 4

Pins 2 and 4 are the supply terminals, GND and VDD respectively. Pin 3 is the clock output, programmable to Standard and High Drive strength settings. Visit [ClockWorks® Configurator](#) to customize your device.

2.3 Output Buffer Options

The DSC61xx family is available in multiple output driver configurations.

The standard-drive (61x1) and high-drive (61x2) deliver respective output currents of greater than 3 mA and 6 mA at 20%/80% of the supply voltage. For heavy loads of 15 pF or higher, the high-drive option is recommended.

3.0 DIAGRAMS

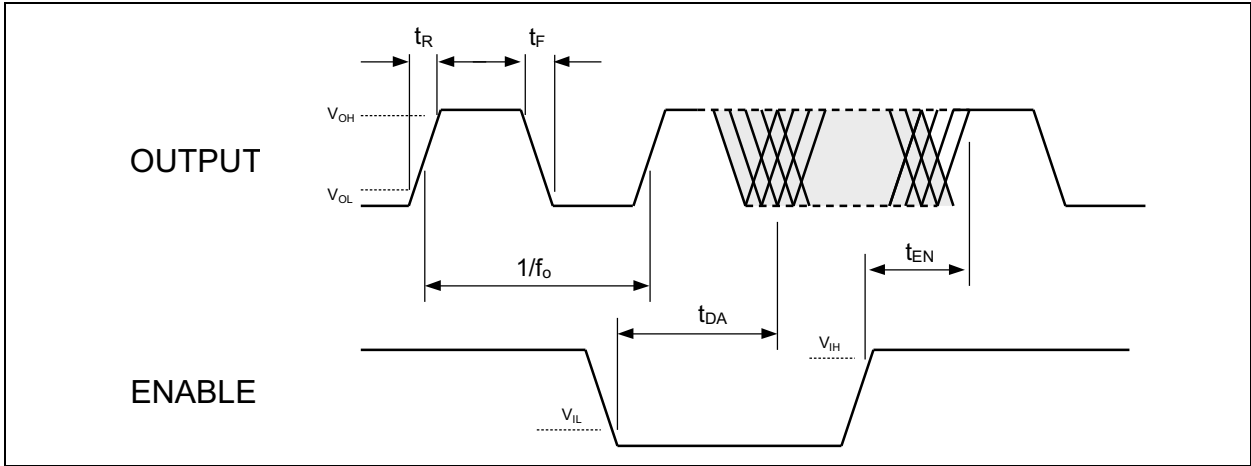


FIGURE 3-1: Output Waveform.

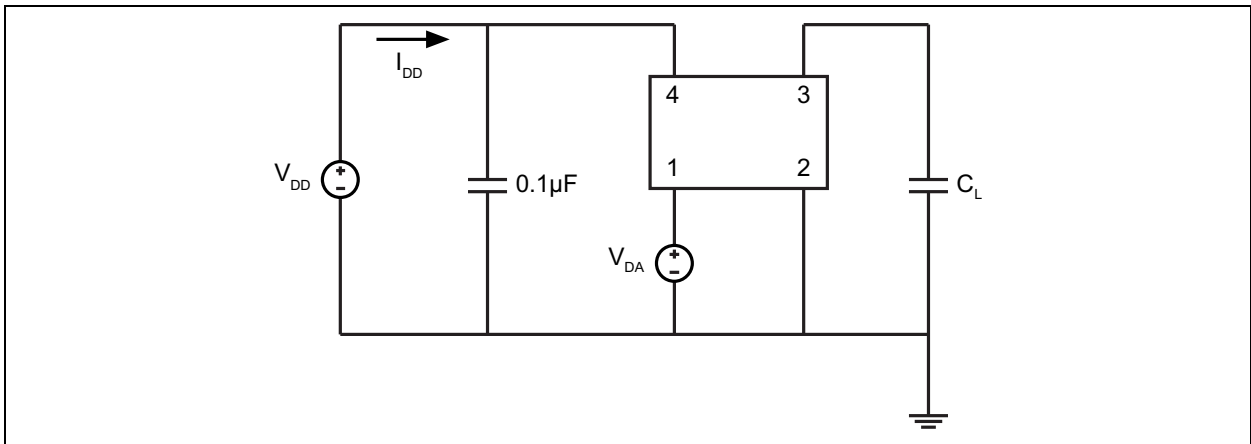


FIGURE 3-2: Test Circuit.

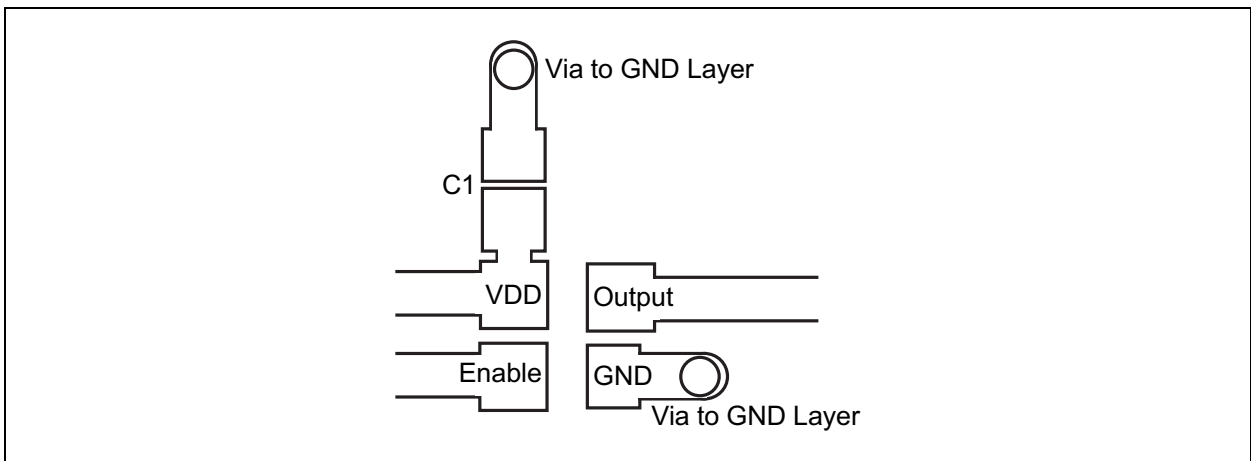


FIGURE 3-3: Recommended Board Layout.

DSC61XXB

4.0 SOLDER REFLOW PROFILE

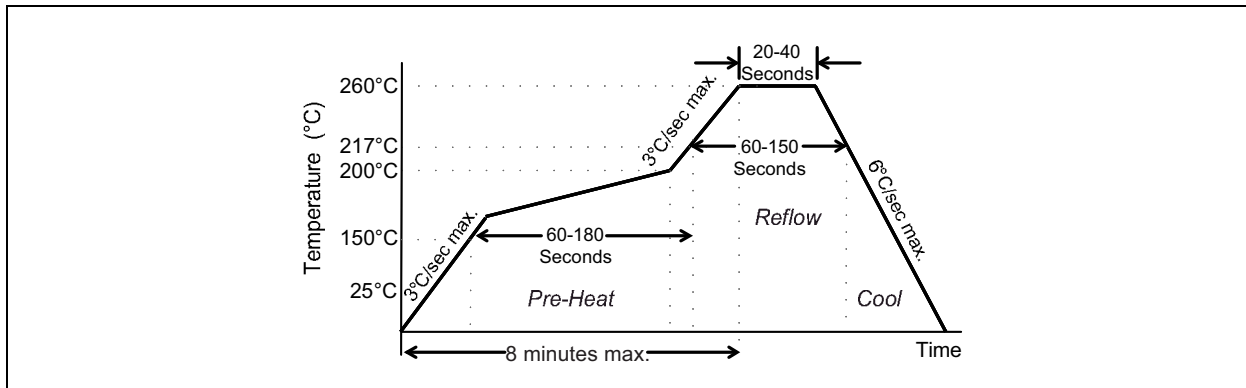


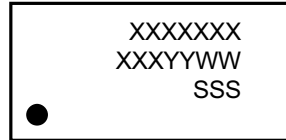
FIGURE 4-1: Solder Reflow Profile.

MSL 1 @ 260°C refer to JSTD-020C	
Ramp-Up Rate (200°C to Peak Temp)	3°C/sec. max.
Preheat Time 150°C to 200°C	60 to 180 sec.
Time maintained above 217°C	60 to 150 sec.
Peak Temperature	255°C to 260°C
Time within 5°C of actual Peak	20 to 40 sec.
Ramp-Down Rate	6°C/sec. max.
Time 25°C to Peak Temperature	8 minutes max.

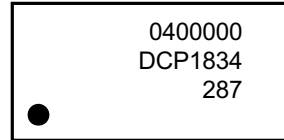
5.0 PACKAGING INFORMATION

5.1 Package Marking Information

4-Lead VLGA* 2.5 x 2.0



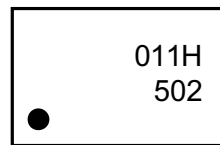
Example



4-Lead VFLGA* 2.0 x 1.6/1.6 x 1.2



Example

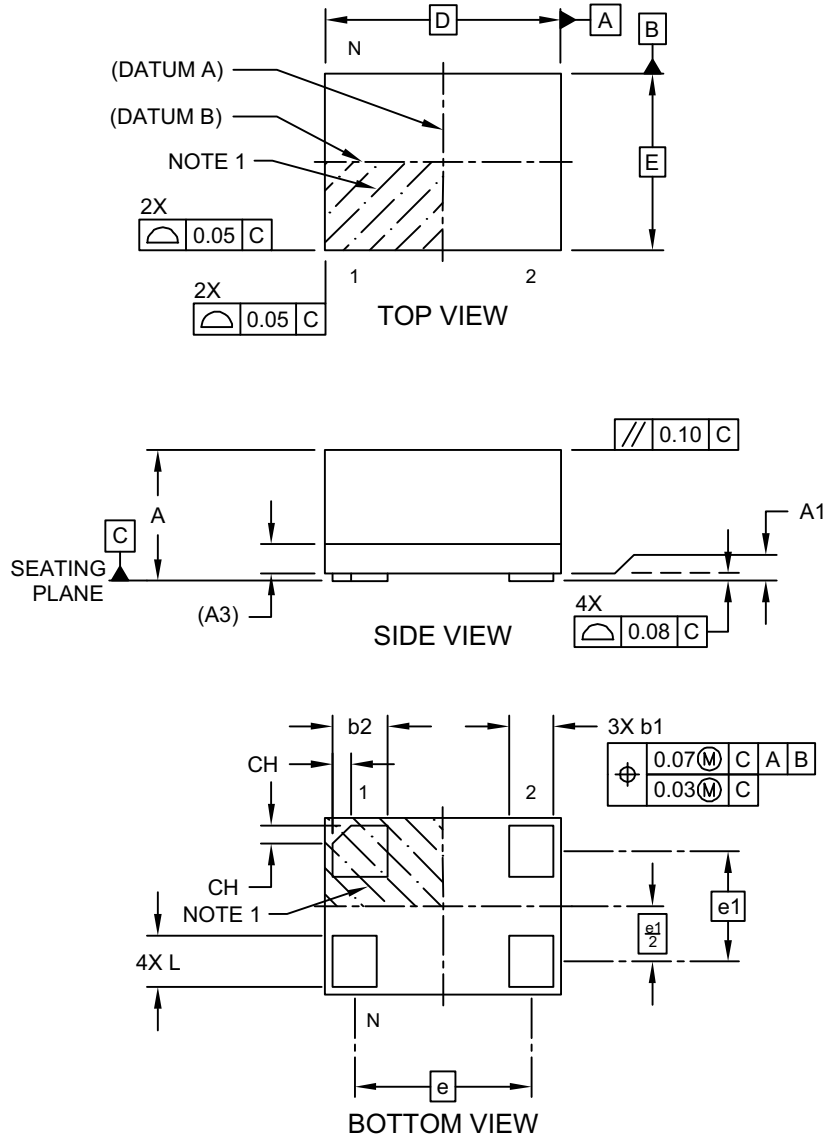


Legend:	XX...X	Product code or customer-specific information
	Y	Year code (last digit of calendar year)
	YY	Year code (last 2 digits of calendar year)
	WW	Week code (week of January 1 is week '01')
	SSS	Alphanumeric traceability code
	(e3)	Pb-free JEDEC® designator for Matte Tin (Sn)
	*	This package is Pb-free. The Pb-free JEDEC designator ((e3)) can be found on the outer packaging for this package.
	•, ▲, ▼	Pin one index is identified by a dot, delta up, or delta down (triangle mark).
Note:	In the event the full Microchip part number cannot be marked on one line, it will be carried over to the next line, thus limiting the number of available characters for customer-specific information. Package may or may not include the corporate logo.	
	Underbar (̄) and/or Overbar (¯) symbol may not be to scale.	

DSC61XXB

4-Lead Very Thin Fine Pitch Land Grid Array (ARA) - 1.6x1.2 mm Body [VFLGA]

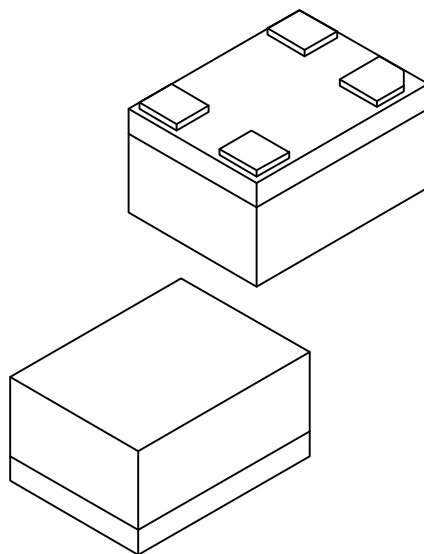
Note: For the most current package drawings, please see the Microchip Packaging Specification located at <http://www.microchip.com/packaging>



Microchip Technology Drawing C04-1199B Sheet 1 of 2

4-Lead Very Thin Fine Pitch Land Grid Array (ARA) - 1.6x1.2 mm Body [VFLGA]

Note: For the most current package drawings, please see the Microchip Packaging Specification located at <http://www.microchip.com/packaging>



Units		MILLIMETERS		
		MIN	NOM	MAX
Dimension Limits				
Number of Terminals	N	4		
Terminal Pitch	e	1.20 BSC		
Terminal Pitch	e1	0.75 BSC		
Overall Height	A	0.79	0.84	0.89
Standoff	A1	0.00	0.02	0.05
Substrate Thickness (with Terminals)	A3	0.20 REF		
Overall Length	D	1.60 BSC		
Overall Width	E	1.20 BSC		
Terminal Width	b1	0.25	0.30	0.35
Terminal Width	b2	0.325	0.375	0.425
Terminal Length	L	0.30	0.35	0.40
Terminal 1 Index Chamfer	CH	-	0.125	-

Notes:

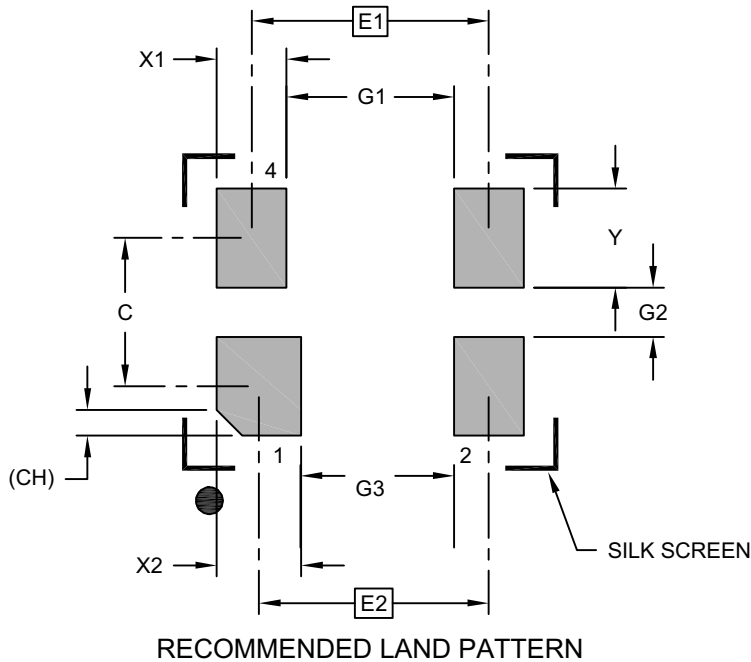
1. Pin 1 visual index feature may vary, but must be located within the hatched area.
2. Package is saw singulated
3. Dimensioning and tolerancing per ASME Y14.5M
 - BSC: Basic Dimension. Theoretically exact value shown without tolerances.
 - REF: Reference Dimension, usually without tolerance, for information purposes only.

Microchip Technology Drawing C04-1199B Sheet 2 of 2

DSC61XXB

4-Lead Very Thin Fine Pitch Land Grid Array (ARA) - 1.6x1.2 mm Body [VFLGA]

Note: For the most current package drawings, please see the Microchip Packaging Specification located at <http://www.microchip.com/packaging>



Dimension Limits	Units	MILLIMETERS		
		MIN	NOM	MAX
Contact Pitch	E1		1.20 BSC	
Contact Pitch	E2		1.16 BSC	
Contact Spacing	C		0.75	
Contact Width (X3)	X1			0.35
Contact Width	X2			0.43
Contact Pad Length (X4)	Y			0.50
Space Between Contacts	G1	0.85		
Space Between Contacts (X2)	G2	0.25		
Space Between Contacts	G3	0.77		
Contact 1 Index Chamfer	CH	0.13 X 45° REF		

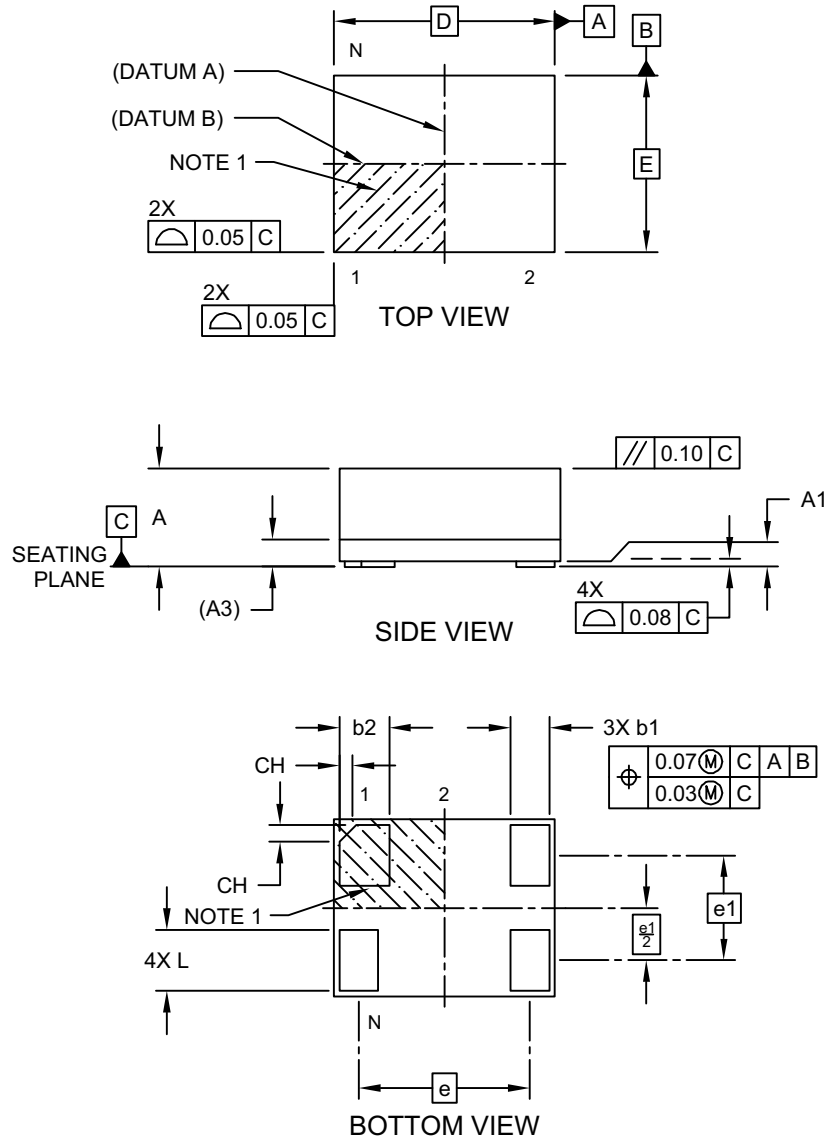
Notes:

1. Dimensioning and tolerancing per ASME Y14.5M
BSC: Basic Dimension. Theoretically exact value shown without tolerances.
2. The value in parenthesis, next to the item description is a unit multiplier.

Microchip Technology Drawing C04-3199B

4-Lead Very Thin Fine Pitch Land Grid Array (ASA) - 2.0x1.6 mm Body [VFLGA]

Note: For the most current package drawings, please see the Microchip Packaging Specification located at <http://www.microchip.com/packaging>

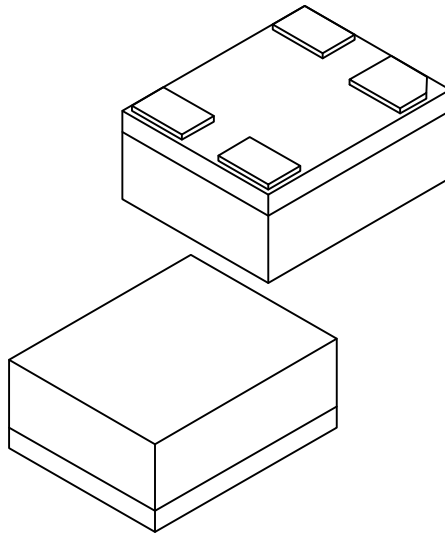


Microchip Technology Drawing C04-1200 Rev D Sheet 1 of 2

DSC61XXB

4-Lead Very Thin Fine Pitch Land Grid Array (ASA) - 2.0x1.6 mm Body [VFLGA]

Note: For the most current package drawings, please see the Microchip Packaging Specification located at <http://www.microchip.com/packaging>



Dimension Limits	Units	MILLIMETERS		
		MIN	NOM	MAX
Number of Terminals	N	4		
Terminal Pitch	e	1.55 BSC		
Terminal Pitch	e1	0.95 BSC		
Overall Height	A	0.79	0.84	0.89
Standoff	A1	0.00	0.02	0.05
Substrate Thickness (with Terminals)	A3	0.20 REF		
Overall Length	D	2.00 BSC		
Overall Width	E	1.60 BSC		
Terminal Width	b1	0.30	0.35	0.40
Terminal Width	b2	0.40	0.45	0.50
Terminal Length	L	0.50	0.55	0.60
Terminal 1 Index Chamfer	CH	-	0.15	-

Notes:

1. Pin 1 visual index feature may vary, but must be located within the hatched area.
2. Package is saw singulated
3. Dimensioning and tolerancing per ASME Y14.5M

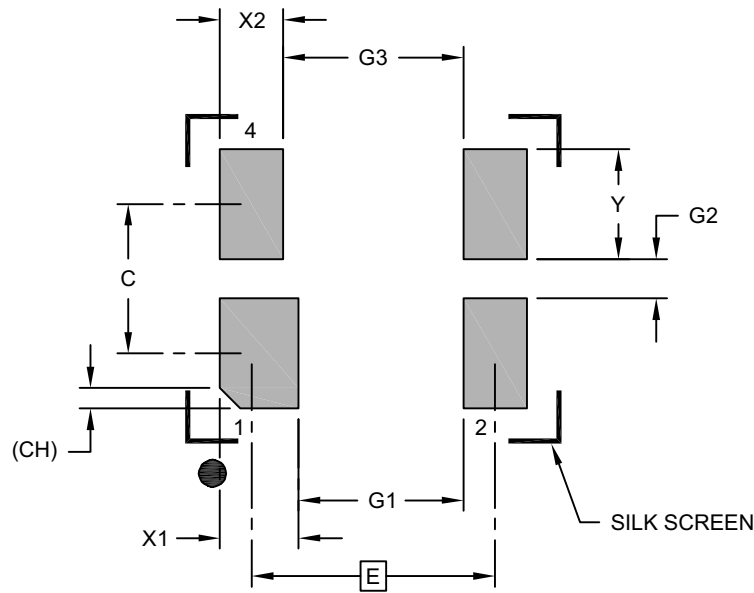
BSC: Basic Dimension. Theoretically exact value shown without tolerances.

REF: Reference Dimension, usually without tolerance, for information purposes only.

Microchip Technology Drawing C04-1200 Rev D Sheet 2 of 2

4-Lead Very Thin Fine Pitch Land Grid Array (ASA) - 2.0x1.6 mm Body [VFLGA]

Note: For the most current package drawings, please see the Microchip Packaging Specification located at <http://www.microchip.com/packaging>



RECOMMENDED LAND PATTERN

Dimension Limits	Units	MILLIMETERS		
		MIN	NOM	MAX
Contact Pitch	E	1.55 BSC		
Contact Spacing	C	0.95		
Contact Width	X1			0.50
Contact Width (X3)	X2			0.40
Contact Pad Length (X4)	Y			0.70
Space Between Contacts	G1	1.05		
Space Between Contacts (X2)	G2	0.25		
Space Between Contacts	G3	1.15		
Contact 1 Index Chamfer	CH	0.13 X 45° REF		

Notes:

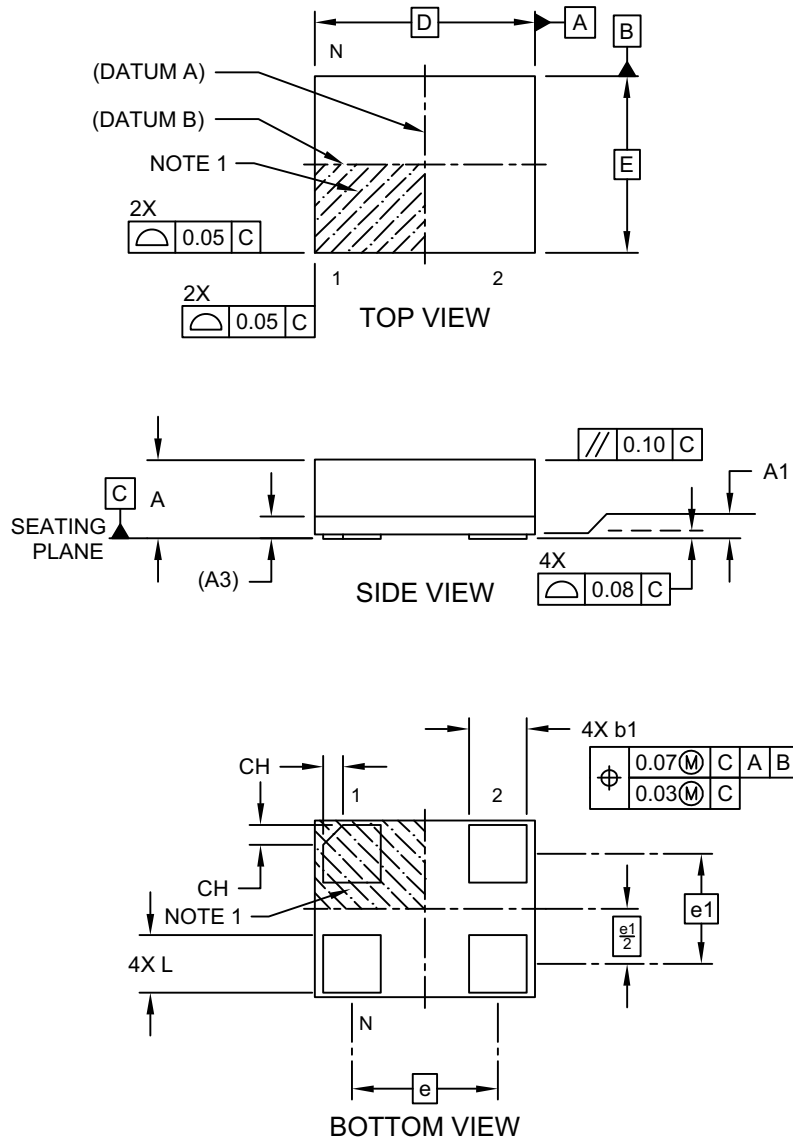
1. Dimensioning and tolerancing per ASME Y14.5M
BSC: Basic Dimension. Theoretically exact value shown without tolerances.
2. The value in parenthesis, next to the item description is a unit multiplier.

Microchip Technology Drawing C04-3200 Rev D

DSC61XXB

4-Lead Very Thin Land Grid Array (AUA) - 2.5x2.0 mm Body [VLGA]

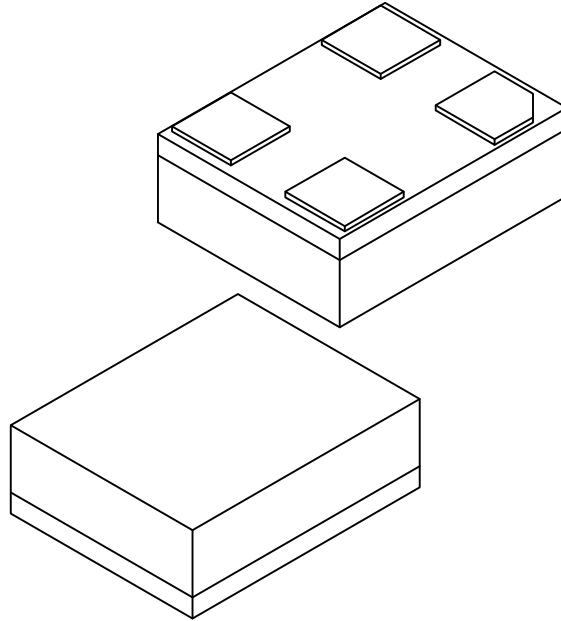
Note: For the most current package drawings, please see the Microchip Packaging Specification located at <http://www.microchip.com/packaging>



Microchip Technology Drawing C04-1202B Sheet 1 of 2

4-Lead Very Thin Land Grid Array (AUA) - 2.5x2.0 mm Body [VLGA]

Note: For the most current package drawings, please see the Microchip Packaging Specification located at <http://www.microchip.com/packaging>



Dimension Limits	Units	MILLIMETERS		
		MIN	NOM	MAX
Number of Terminals	N	4		
Terminal Pitch	e	1.65 BSC		
Terminal Pitch	e1	1.25 BSC		
Overall Height	A	0.79	0.84	0.89
Standoff	A1	0.00	0.02	0.05
Substrate Thickness (with Terminals)	A3	0.20 REF		
Overall Length	D	2.50 BSC		
Overall Width	E	2.00 BSC		
Terminal Width	b1	0.60	0.65	0.70
Terminal Length	L	0.60	0.65	0.70
Terminal 1 Index Chamfer	CH	-	0.225	-

Notes:

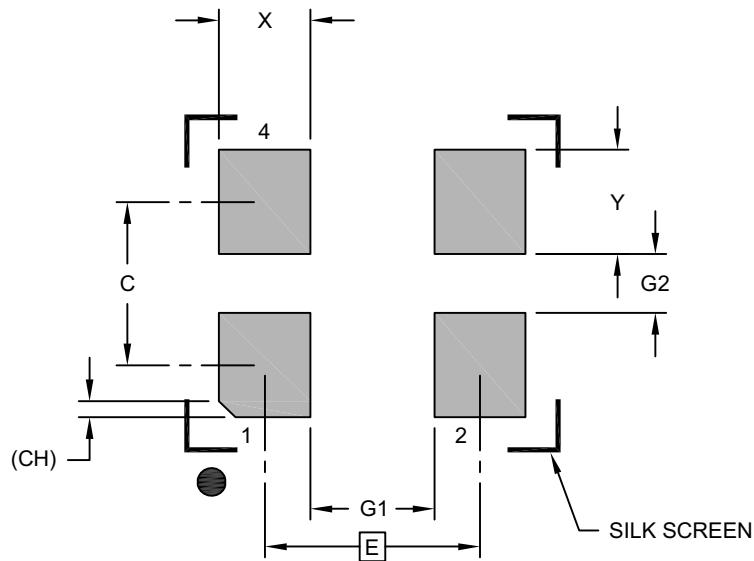
1. Pin 1 visual index feature may vary, but must be located within the hatched area.
2. Package is saw singulated
3. Dimensioning and tolerancing per ASME Y14.5M
 - BSC: Basic Dimension. Theoretically exact value shown without tolerances.
 - REF: Reference Dimension, usually without tolerance, for information purposes only.

Microchip Technology Drawing C04-1202B Sheet 2 of 2

DSC61XXB

4-Lead Very Thin Land Grid Array (AUA) - 2.5x2.0 mm Body [VLGA]

Note: For the most current package drawings, please see the Microchip Packaging Specification located at <http://www.microchip.com/packaging>



RECOMMENDED LAND PATTERN

Dimension Limits	Units	MILLIMETERS		
		MIN	NOM	MAX
Contact Pitch	E	1.65 BSC		
Contact Spacing	C		1.25	
Contact Width (X4)	X			0.70
Contact Pad Length (X4)	Y			0.80
Space Between Contacts (X2)	G1	0.95		
Space Between Contacts (X2)	G2	0.45		
Contact 1 Index Chamfer	CH	0.13 X 45° REF		

Notes:

- Dimensioning and tolerancing per ASME Y14.5M
BSC: Basic Dimension. Theoretically exact value shown without tolerances.

Microchip Technology Drawing C04-3202B

APPENDIX A: REVISION HISTORY

Revision A (January 2019)

- Initial creation of DSC61xxB Microchip data sheet DS20006155A.

Revision B (December 2021)

- Replaced all three package drawings with the most current versions.

DSC61XXB

NOTES:

PRODUCT IDENTIFICATION SYSTEM

To order or obtain information, e.g., on pricing or delivery, contact your local Microchip representative or sales office.

PART NO.		X	X	X	X	X	X - XXX.XXXX	X
Device	Pin 1 Definition	Output Drive Strength	Package	Temperature Range	Frequency Stability	Revision	Frequency	Media Type
Device:	DSC61:	Ultra-Small, Ultra-Low Power MEMS Oscillator						
Pin Definition:	Selection	Pin 1	Internal Pull-Up Register					
	0	OE	Pull-up					
	1	STDBY	Pull-up					
	2	FS	Pull-up					
	4	OE	None					
	5	STDBY	None					
	6	FS	None					
Output Drive Strength:	1	Standard						
	2	High						
Packages:	J	=	4-Lead 2.5 mm x 2.0 mm VLGA					
	M	=	4-Lead 2.0 mm x 1.6 mm VLGA					
	H	=	4-Lead 1.6 mm x 1.2 mm VFLGA					
Temperature Range:	A	=	-40°C to +125°C (Automotive)					
	L	=	-40°C to +105°C (Extended Industrial)					
	I	=	-40°C to +85°C (Industrial)					
	E	=	-20°C to +70°C (Extended Commercial)					
Frequency Stability:	1	=	± 50 ppm					
	2	=	± 25 ppm					
	3	=	± 20 ppm					
Revision:	B	=	Revision B					
Frequency:	xxx.xxxx	=	User-Defined Frequency between 001.0000 MHz and 100.0000 MHz					
	xxxkxxx	=	User-Defined Frequency between 003.500 kHz and 999.999 kHz					
	xxxx	=	Frequency configuration code when pin 1 = FS. Configure the part online through ClockWorks					
Media Type:	<blank>	=	140/Tube (J Package Option)					
	<blank>	=	100/Bag (M & H Package Option)					
	T	=	1,000/Reel					
	B	=	3,000/Reel					

Examples:

a) DSC6112JI2B-100.0000:
Ultra-Small, Ultra-Low Power MEMS Oscillator, Pin 1 = STDBY with Internal Pull-Up, High Drive Strength, 4-Lead 2.5 mm x 2.0 mm VLGA, Industrial Temperature, ±25 ppm Stability, Revision B, 100 MHz Frequency, 140/Tube

b) DSC6101HE1B-016.0000T:
Ultra-Small, Ultra-Low Power MEMS Oscillator, Pin 1 = OE with Internal Pull-Up, Standard Drive Strength, 4-Lead 1.6 mm x 1.2 mm VFLGA, Extended Commercial Temperature, ±50 ppm Stability, Revision B, 16 MHz Frequency, 1,000/Reel

c) DSC6121MI2B-005QB:
Ultra-Small, Ultra-Low Power MEMS Oscillator, Pin 1 = Freq. Select with Internal Pull-Up, Standard Drive Strength, 4-Lead 2.0 mm x 1.6 mm VLGA, Industrial Temperature, ±25 ppm Stability, Revision B, Two Frequencies Configured through ClockWorks, 3,000/Reel

Note 1: Media Type identifier only appears in the catalog part number description. This identifier is used for ordering purposes and is not printed on the device package. Check with your Microchip Sales Office for package availability with different media options.

Note 1: Please visit Microchip ClockWorks® Configurator Website to configure the part number for customized frequency. <http://clockworks.microchip.com/timing/>.

DSC61XXB

NOTES:

Note the following details of the code protection feature on Microchip products:

- Microchip products meet the specifications contained in their particular Microchip Data Sheet.
- Microchip believes that its family of products is secure when used in the intended manner, within operating specifications, and under normal conditions.
- Microchip values and aggressively protects its intellectual property rights. Attempts to breach the code protection features of Microchip product is strictly prohibited and may violate the Digital Millennium Copyright Act.
- Neither Microchip nor any other semiconductor manufacturer can guarantee the security of its code. Code protection does not mean that we are guaranteeing the product is “unbreakable”. Code protection is constantly evolving. Microchip is committed to continuously improving the code protection features of our products.

This publication and the information herein may be used only with Microchip products, including to design, test, and integrate Microchip products with your application. Use of this information in any other manner violates these terms. Information regarding device applications is provided only for your convenience and may be superseded by updates. It is your responsibility to ensure that your application meets with your specifications. Contact your local Microchip sales office for additional support or, obtain additional support at <https://www.microchip.com/en-us/support/design-help/client-support-services>.

THIS INFORMATION IS PROVIDED BY MICROCHIP "AS IS". MICROCHIP MAKES NO REPRESENTATIONS OR WARRANTIES OF ANY KIND WHETHER EXPRESS OR IMPLIED, WRITTEN OR ORAL, STATUTORY OR OTHERWISE, RELATED TO THE INFORMATION INCLUDING BUT NOT LIMITED TO ANY IMPLIED WARRANTIES OF NON-INFRINGEMENT, MERCHANTABILITY, AND FITNESS FOR A PARTICULAR PURPOSE, OR WARRANTIES RELATED TO ITS CONDITION, QUALITY, OR PERFORMANCE.

IN NO EVENT WILL MICROCHIP BE LIABLE FOR ANY INDIRECT, SPECIAL, PUNITIVE, INCIDENTAL, OR CONSEQUENTIAL LOSS, DAMAGE, COST, OR EXPENSE OF ANY KIND WHATSOEVER RELATED TO THE INFORMATION OR ITS USE, HOWEVER CAUSED, EVEN IF MICROCHIP HAS BEEN ADVISED OF THE POSSIBILITY OR THE DAMAGES ARE FORESEEABLE. TO THE FULLEST EXTENT ALLOWED BY LAW, MICROCHIP'S TOTAL LIABILITY ON ALL CLAIMS IN ANY WAY RELATED TO THE INFORMATION OR ITS USE WILL NOT EXCEED THE AMOUNT OF FEES, IF ANY, THAT YOU HAVE PAID DIRECTLY TO MICROCHIP FOR THE INFORMATION.

Use of Microchip devices in life support and/or safety applications is entirely at the buyer's risk, and the buyer agrees to defend, indemnify and hold harmless Microchip from any and all damages, claims, suits, or expenses resulting from such use. No licenses are conveyed, implicitly or otherwise, under any Microchip intellectual property rights unless otherwise stated.

For information regarding Microchip's Quality Management Systems, please visit www.microchip.com/quality.

Trademarks

The Microchip name and logo, the Microchip logo, Adaptec, AnyRate, AVR, AVR logo, AVR Freaks, BesTime, BitCloud, CryptoMemory, CryptoRF, dsPIC, flexPWR, HELDO, IGLOO, JukeBlox, KeeLoq, Klear, LANCheck, LinkMD, maXStylus, maXTouch, MediaLB, megaAVR, Microsemi, Microsemi logo, MOST, MOST logo, MPLAB, OptoLyzer, PIC, picoPower, PICSTART, PIC32 logo, PolarFire, Prochip Designer, QTouch, SAM-BA, SenGenuity, SpyNIC, SST, SST Logo, SuperFlash, Symmetricom, SyncServer, Tachyon, TimeSource, tinyAVR, UNI/O, Vectron, and XMEGA are registered trademarks of Microchip Technology Incorporated in the U.S.A. and other countries.

AgileSwitch, APT, ClockWorks, The Embedded Control Solutions Company, EtherSynch, Flashtec, Hyper Speed Control, HyperLight Load, IntelliMOS, Libero, motorBench, mTouch, Powermite 3, Precision Edge, ProASIC, ProASIC Plus, ProASIC Plus logo, QuietWire, SmartFusion, SyncWorld, Temux, TimeCesium, TimeHub, TimePictra, TimeProvider, TrueTime, WinPath, and ZL are registered trademarks of Microchip Technology Incorporated in the U.S.A.

Adjacent Key Suppression, AKS, Analog-for-the-Digital Age, Any Capacitor, AnyIn, AnyOut, Augmented Switching, BlueSky, BodyCom, CodeGuard, CryptoAuthentication, CryptoAutomotive, CryptoCompanion, CryptoController, dsPICDEM, dsPICDEM.net, Dynamic Average Matching, DAM, ECAN, Espresso T1S, EtherGREEN, GridTime, IdealBridge, In-Circuit Serial Programming, ICSP, INICnet, Intelligent Paralleling, Inter-Chip Connectivity, JitterBlocker, Knob-on-Display, maxCrypto, maxView, memBrain, Mindi, MiWi, MPASM, MPF, MPLAB Certified logo, MPLIB, MPLINK, MultiTRAK, NetDetach, NVM Express, NVMe, Omniscient Code Generation, PICDEM, PICDEM.net, PICKit, PICtail, PowerSmart, PureSilicon, QMatrix, REAL ICE, Ripple Blocker, RTAX, RTG4, SAM-ICE, Serial Quad I/O, simpleMAP, SimpliPHY, SmartBuffer, SmartHLS, SMART-I.S., storClad, SQI, SuperSwitcher, SuperSwitcher II, Switchtec, SynchroPHY, Total Endurance, TSHARC, USBCheck, VariSense, VectorBlox, VeriPHY, ViewSpan, WiperLock, XpressConnect, and ZENA are trademarks of Microchip Technology Incorporated in the U.S.A. and other countries.

SQTP is a service mark of Microchip Technology Incorporated in the U.S.A.

The Adaptec logo, Frequency on Demand, Silicon Storage Technology, Symmcom, and Trusted Time are registered trademarks of Microchip Technology Inc. in other countries.

GestIC is a registered trademark of Microchip Technology Germany II GmbH & Co. KG, a subsidiary of Microchip Technology Inc., in other countries.

All other trademarks mentioned herein are property of their respective companies.

© 2019 - 2021, Microchip Technology Incorporated and its subsidiaries.

All Rights Reserved.

ISBN: 978-1-5224-9423-2



MICROCHIP

Worldwide Sales and Service

AMERICAS

Corporate Office
2355 West Chandler Blvd.
Chandler, AZ 85224-6199
Tel: 480-792-7200
Fax: 480-792-7277
Technical Support:
<http://www.microchip.com/support>
Web Address:
www.microchip.com

Atlanta
Duluth, GA
Tel: 678-957-9614
Fax: 678-957-1455

Austin, TX
Tel: 512-257-3370

Boston
Westborough, MA
Tel: 774-760-0087
Fax: 774-760-0088

Chicago
Itasca, IL
Tel: 630-285-0071
Fax: 630-285-0075

Dallas
Addison, TX
Tel: 972-818-7423
Fax: 972-818-2924

Detroit
Novi, MI
Tel: 248-848-4000

Houston, TX
Tel: 281-894-5983

Indianapolis
Noblesville, IN
Tel: 317-773-8323
Fax: 317-773-5453
Tel: 317-536-2380

Los Angeles
Mission Viejo, CA
Tel: 949-462-9523
Fax: 949-462-9608
Tel: 951-273-7800

Raleigh, NC
Tel: 919-844-7510

New York, NY
Tel: 631-435-6000

San Jose, CA
Tel: 408-735-9110
Tel: 408-436-4270

Canada - Toronto
Tel: 905-695-1980
Fax: 905-695-2078

ASIA/PACIFIC

Australia - Sydney
Tel: 61-2-9868-6733

China - Beijing
Tel: 86-10-8569-7000

China - Chengdu
Tel: 86-28-8665-5511

China - Chongqing
Tel: 86-23-8980-9588

China - Dongguan
Tel: 86-769-8702-9880

China - Guangzhou
Tel: 86-20-8755-8029

China - Hangzhou
Tel: 86-571-8792-8115

China - Hong Kong SAR
Tel: 852-2943-5100

China - Nanjing
Tel: 86-25-8473-2460

China - Qingdao
Tel: 86-532-8502-7355

China - Shanghai
Tel: 86-21-3326-8000

China - Shenyang
Tel: 86-24-2334-2829

China - Shenzhen
Tel: 86-755-8864-2200

China - Suzhou
Tel: 86-186-6233-1526

China - Wuhan
Tel: 86-27-5980-5300

China - Xian
Tel: 86-29-8833-7252

China - Xiamen
Tel: 86-592-2388138

China - Zhuhai
Tel: 86-756-3210040

ASIA/PACIFIC

India - Bangalore
Tel: 91-80-3090-4444

India - New Delhi
Tel: 91-11-4160-8631

India - Pune
Tel: 91-20-4121-0141

Japan - Osaka
Tel: 81-6-6152-7160

Japan - Tokyo
Tel: 81-3-6880-3770

Korea - Daegu
Tel: 82-53-744-4301

Korea - Seoul
Tel: 82-2-554-7200

Malaysia - Kuala Lumpur
Tel: 60-3-7651-7906

Malaysia - Penang
Tel: 60-4-227-8870

Philippines - Manila
Tel: 63-2-634-9065

Singapore
Tel: 65-6334-8870

Taiwan - Hsin Chu
Tel: 886-3-577-8366

Taiwan - Kaohsiung
Tel: 886-7-213-7830

Taiwan - Taipei
Tel: 886-2-2508-8600

Thailand - Bangkok
Tel: 66-2-694-1351

Vietnam - Ho Chi Minh
Tel: 84-28-5448-2100

EUROPE

Austria - Wels
Tel: 43-7242-2244-39
Fax: 43-7242-2244-393

Denmark - Copenhagen
Tel: 45-4485-5910
Fax: 45-4485-2829

Finland - Espoo
Tel: 358-9-4520-820

France - Paris
Tel: 33-1-69-53-63-20
Fax: 33-1-69-30-90-79

Germany - Garching
Tel: 49-8931-9700

Germany - Haan
Tel: 49-2129-3766400

Germany - Heilbronn
Tel: 49-7131-72400

Germany - Karlsruhe
Tel: 49-721-625370

Germany - Munich
Tel: 49-89-627-144-0
Fax: 49-89-627-144-44

Germany - Rosenheim
Tel: 49-8031-354-560

Israel - Ra'anana
Tel: 972-9-744-7705

Italy - Milan
Tel: 39-0331-742611
Fax: 39-0331-466781

Italy - Padova
Tel: 39-049-7625286

Netherlands - Drunen
Tel: 31-416-690399
Fax: 31-416-690340

Norway - Trondheim
Tel: 47-7288-4388

Poland - Warsaw
Tel: 48-22-3325737

Romania - Bucharest
Tel: 40-21-407-87-50

Spain - Madrid
Tel: 34-91-708-08-90
Fax: 34-91-708-08-91

Sweden - Gothenberg
Tel: 46-31-704-60-40

Sweden - Stockholm
Tel: 46-8-5090-4654

UK - Wokingham
Tel: 44-118-921-5800
Fax: 44-118-921-5820