



Cypress Semiconductor Corporation, 198 Champion Court, San Jose, CA 95134. Tel: (408) 943-2600

PRODUCT INFORMATION NOTIFICATION

PIN: PIN194402

Date: November 05, 2019

Subject: Qualification of New Carrier Tape for Select QFN Packages at Cypress Philippines

To: PCN Coordinator
PCN Coordinator
FUTURE
PCN.System@Future.ca

Change Type: Minor

Description of Change:

Cypress has qualified an EIA standard carrier tape for select QFN packages at Cypress Philippines (CML, Gateway Business Park, SEPZA, Brgy., Javalera, General Trias, Cavite, Philippines). The new carrier tape meets the Cypress specification and demonstrates the same quality as the current carrier tape being used.

The new cover tape has the following details:

Site	Material	Supplier	Qual Report	Application
CML	Carrier Tape	KOSTAT	192907	QFN4x4, QFN5x5, QFN6x6 Packages

Package	Critical Dimension	Current: ADVANTEK / CPAK		Proposed: KOSTAT		Remarks
		Dim (mm)	Tol (mm)	Dim (mm)	Tol (mm)	
QFN 6X6mm	Tape Width (W)	16.00	0.3	16.00	0.3	Matched
	Pocket Width (Ao)	6.30	0.1	6.30	0.1	
	Pocket Length (Bo)	6.30	0.1	6.30	0.1	
	Pocket Depth (Ko)	0.80	0.1	0.80	0.1	
	Pocket Pitch	12.00	0.1	12.00	0.1	
	Sprocket hole Pitch	2.00	0.1	2.00	0.1	
	Sprocket hole Diameter	1.50	0.1	1.50	0.1	
	Center Hole Diameter	1.5min	NA	1.5min	NA	
Color	Black		Black			

Package	Critical Dimension	Current: ADVANTEK / CPAK		Proposed: KOSTAT		Remarks
QFN 5X5mm	Tape Width (W)	12.00	0.3	12.00	0.3	Matched
	Pocket Width (Ao)	5.25	0.1	5.25	0.1	
	Pocket Length (Bo)	5.25	0.1	5.25	0.1	
	Pocket Depth (Ko)	1.10	0.1	1.10	0.1	
	Pocket Pitch	8.00	0.1	8.00	0.1	
	Sprocket hole Pitch	4.00	0.1	4.00	0.1	
	Sprocket hole Diameter	1.50	0.1	1.50	0.1	
	Center Hole Diameter	1.5min	NA	1.5min	NA	
	Color	Black		Black		
QFN 4X4mm	Tape Width (W)	12.00	0.3	12.00	0.3	Matched
	Pocket Width (Ao)	4.30	0.1	4.30	0.1	
	Pocket Length (Bo)	4.30	0.1	4.30	0.1	
	Pocket Depth (Ko)	1.10	0.1	1.10	0.1	
	Pocket Pitch	8.00	0.1	8.00	0.1	
	Sprocket hole Pitch	4.00	0.1	4.00	0.1	
	Sprocket hole Diameter	1.50	0.1	1.50	0.1	
	Center Hole Diameter	1.5min	NA	1.5min	NA	
	Color	Black		Black		

No changes made to the following attributes:

- Storage: Environment 20°C - 25°C and relative humidity 50% - 75%
- Unit orientation on carrier pocket
- Carrier tape material
- Color of carrier tape
- Length and width

Benefit of Change:

This change is part of Cypress' continuous quality improvement to standardize tape and reel materials at Cypress Philippines.

Affected Parts: 514

See the attached 'Affected Parts List' file for the part number affected by this change. Note that any new parts that are introduced after the publication of this PIN will include all changes outlined in this PIN.

Qualification Status:

The new carrier tape is qualified through a series of tests detailed in the Qualification Test Plan QTP#192907. The QTP report can be found as an attachment to this notification.

Approximate Implementation Date:

This change will be effective with the date of this notification.

Response Required:

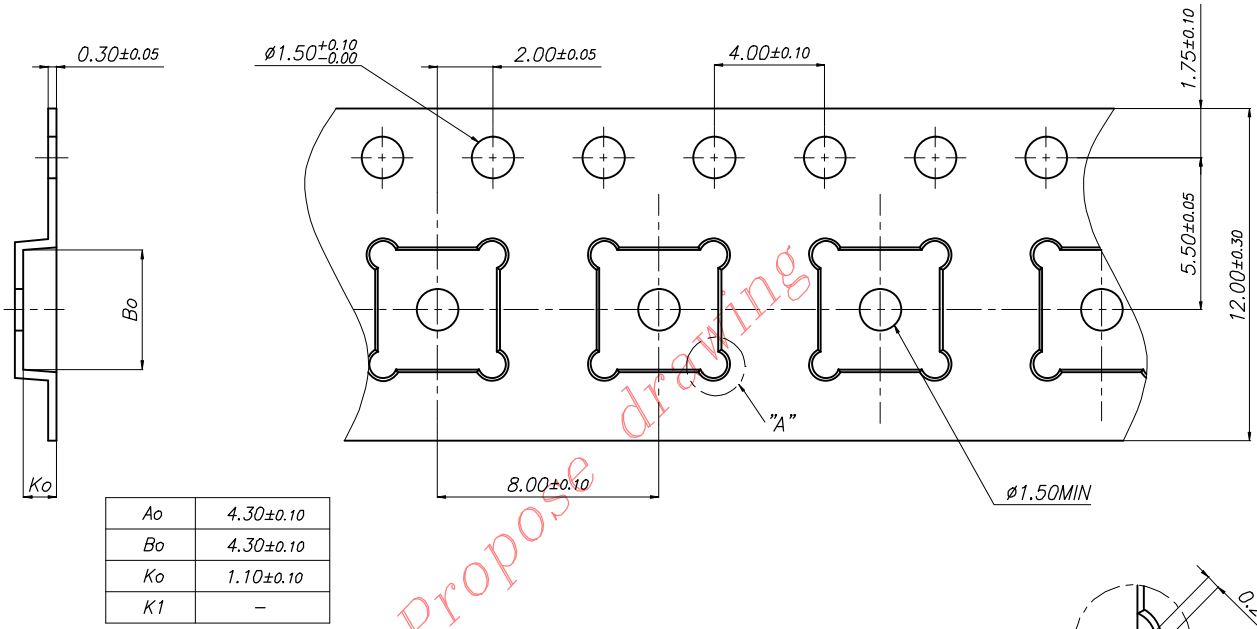
This is an information only announcement. No response is required.

For additional information regarding this change, contact your local sales representative or contact the PCN Administrator at pcn_adm@cypress.com.

Sincerely,

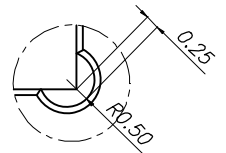
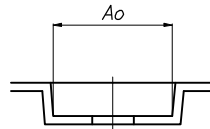
Cypress PCN Administration

REV.	ITEM	DESCRIPTION	BEFORE REV.	AFTER REV.	DATE	APPR.
00	-	-	-	-	MAR.26.2004	S.J.HA



NOTES:

- 10 sprocket hole pitch cumulative tolerance 0.2/-0.2
- Camber not to exceed 1mm in 250mm
- Material: Black conductive Polystyrene
- Ao and Bo measured on a plane 0.3mm above the bottom of the pocket
- Ko measured from a plane on the inside bottom of the pocket to the top surface of the carrier.
- Pocket center position relative to sprocket hole center measured as true position center of pocket, not pocket hole center.
- Pocket center and pocket hole center must be same position.

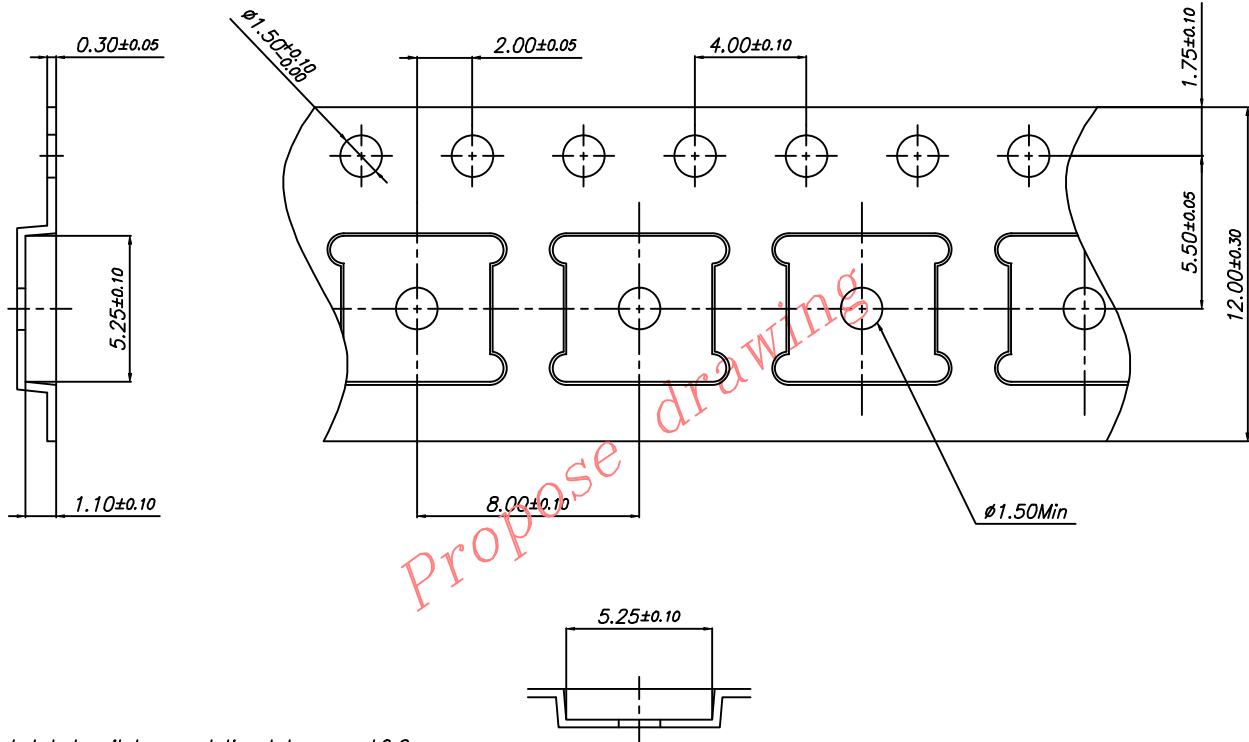


A SCALE
(2/1)

UNLESS OTHERWISE SPECIFIED: DIMENSIONS ARE IN MILLIMETERS	THIRD ANGLE PROJECTION		Kostat, Inc. TITLE CARRIER TAPE QFN 4x4		
	TOLERANCE DECIMALS ANGULAR X.X ±0.13 ± 1° X.XX ±0.10 DO NOT SCALE DRAWING	DESIGN M.H.KANG CHECK C.S.AN APPROVED S.J.HA			

KOSTAT®

REV.	ITEM	DESCRIPTION	BEFORE REV.	AFTER REV.	DATE	APPR.
00	-	-	-	-	JUL.23.2019	D.H.LEE

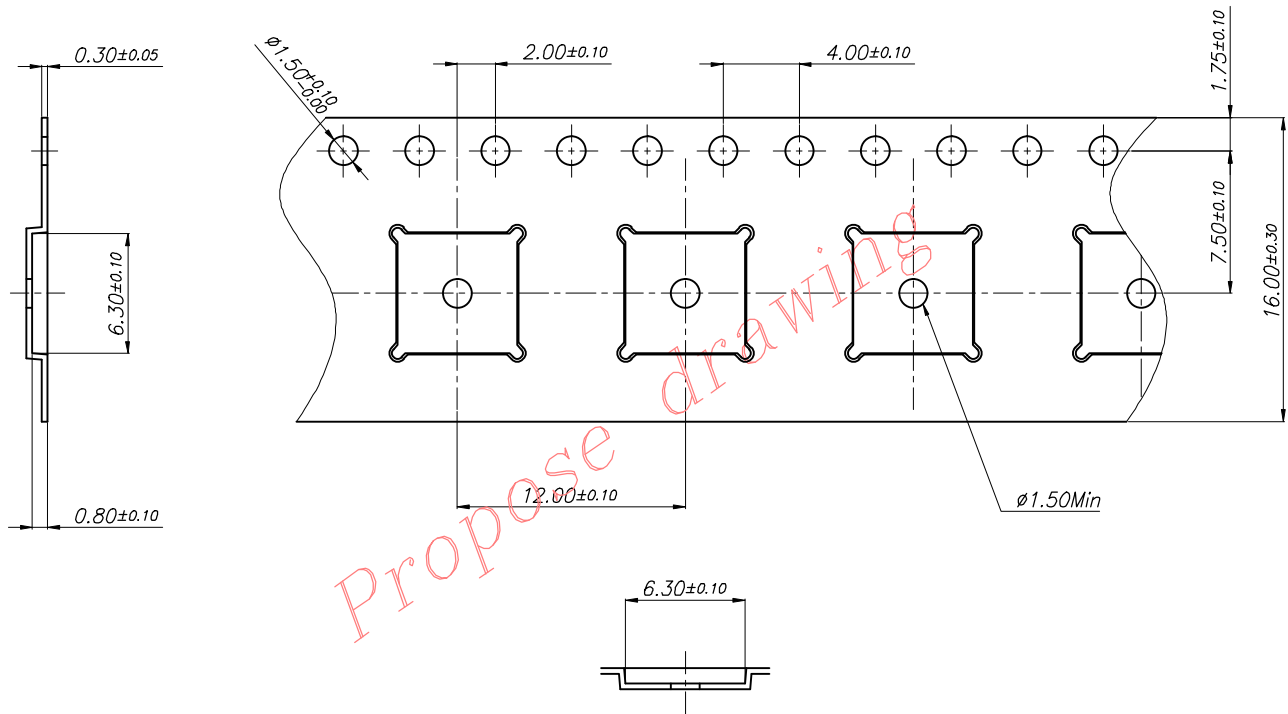


NOTES:

- 10 sprocket hole pitch cumulative tolerance ± 0.2
- Camber not to exceed 1mm in 250mm
- Material: Black conductive Polystyrene
- Ao and Bo measured on a plane 0.3mm above the bottom of the pocket
- Ko measured from a plane on the inside bottom of the pocket to the top surface of the carrier.
- Pocket position relative to sprocket hole measured as true position of pocket, not pocket hole.

UNLESS OTHERWISE SPECIFIED: DIMENSIONS ARE IN MILLIMETERS		THIRD ANGLE PROJECTION		Kostat, Inc.		
TOLERANCE		DESIGN		TITLE		
DECIMALS	ANGULAR	D.H.LEE		CARRIER TAPE		
X.XX ± 0.13	\pm	CHECK		SIZE	DWG NO.	REV NO.
X.XX ± 0.10		D.H.LEE		A4	KS-1208-1385	00
DO NOT SCALE DRAWING		APPROVED		SCALE	RELEASE DATE	SHEET
UNIT mm		D.H.LEE		5/1	JUL.23.2019	1 of 1

REV.	ITEM	DESCRIPTION	BEFOR REV.	AFTER REV.	DATE	APPR.
00	-	-	-	-	JUL.11.2019	D.H.LEE

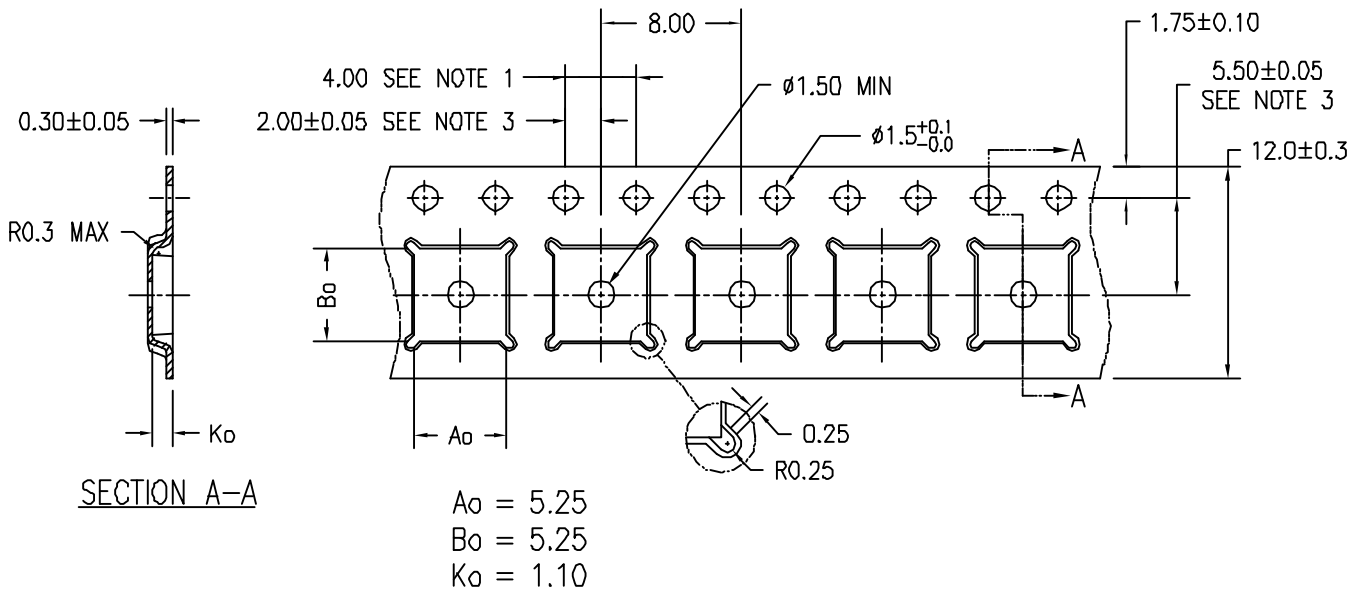


NOTES:

1. 10 sprocket hole pitch cumulative tolerance ± 0.2
2. Camber not to exceed 1mm in 250mm
3. Material: Black conductive Polystyrene
4. A_o and B_o measured on a plane 0.3mm above the bottom of the pocket
5. K_o measured from a plane on the inside bottom of the pocket to the top surface of the carrier.
6. Pocket position relative to sprocket hole measured as true position of pocket, not pocket hole.

<small>UNLESS OTHERWISE SPECIFIED: DIMENSIONS ARE MILLIMETERS</small> <small>TOLERANCE</small> <small>DECIMALS</small> <small>X.X ±0.13</small> <small>X.XX ±0.10</small> <small>DO NOT SCALE DRAWING</small> <small>UNIT</small> <small>mm</small>	<small>THIRD ANGLE PROJECTION</small> 		Kostat, Inc. <small>TITLE</small> CARRIER TAPE QFN 6x6			
	<small>DESIGN</small> D.H.LEE	<small>CHECK</small> D.H.LEE	<small>APPROVED</small> D.H.LEE	<small>SIZE</small> A4	<small>DWG NO.</small> KS-1612-686	<small>REV NO.</small> 00
	<small>SCALE</small> 4/1		<small>RELEASE DATE</small> JUL.11.2019		<small>SHEET</small> 1 of 1	

REVISIONS						
PAGE	ZONE	REV	ECN	DESCRIPTION	DATE	APPROVED
1	-	"1"	0-02546	NEW RELEASE	05/07/08	
1	-	"A"	2290541	UPDATED MATHS BASED ON SUPPLIER'S LATEST DRAWING REVISION CHANGE DRAWING TEMPLATE	05/14/11	
1	-	"B"	3812538	REMOVE LAYER COLORS ON PDF FILE	05/10/12	QAO/JYO/ANC
1	-	"C"	3881724	STANDY REVIEW, NO CHANGE	05/08/13	QAO/JYO/ANC




SECTION A-A

Ao = 5.25
Bo = 5.25
Ko = 1.10

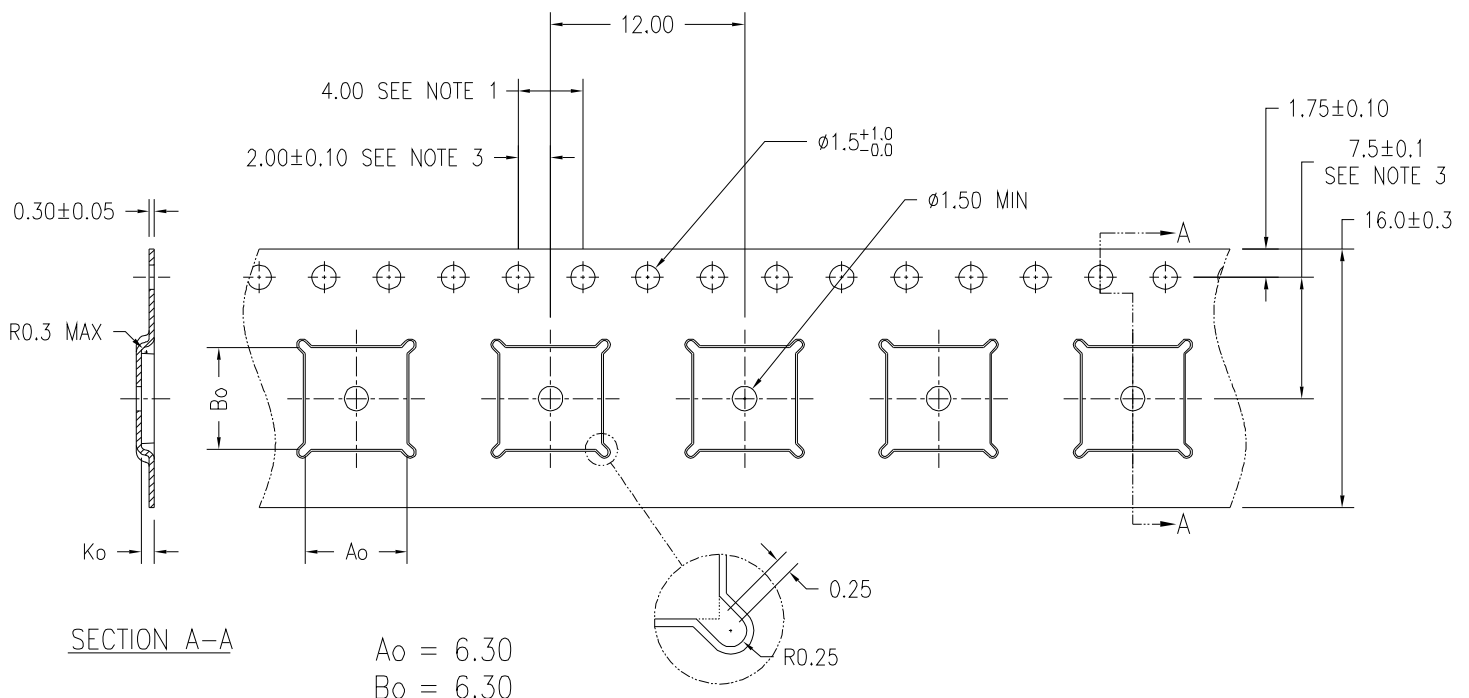
NOTES:

1. 10 SPROCKET HOLE PITCH CUMULATIVE TOLERANCE ± 0.2
2. CAMBER IN COMPLIANCE WITH EIA 481
3. POCKET POSITION RELATIVE TO SPROCKET HOLE MEASURED AS TRUE POSITION OF POCKET, NOT POCKET HOLE

THIS DRAWING CONTAINS INFORMATION WHICH IS THE PROPRIETARY PROPERTY OF CYPRESS SEMICONDUCTOR CORPORATION. THIS DRAWING IS RECEIVED IN CONFIDENCE AND ITS CONTENTS MAY NOT BE DISCLOSED WITHOUT WRITTEN CONSENT OF CYPRESS SEMICONDUCTOR CORPORATION.

UNLESS OTHERWISE SPECIFIED: ALL DIMENSIONS ARE IN MILLIMETERS SPROCKET TOLERANCES ON		DESIGNED BY	DATE	 CYPRESS Company Confidential
DECIMALS	ANGLES	DRAWN BY	DATE	
.X ± 0.2	\pm	ADD	05/10/12	TITLE CARRIER TAPE, QFN 5X5 (ADVANTEK)
.XX ± 0.10		CHECKED BY	DATE	
.XXX \pm		TBJ	05/29/13	
		APPROVED BY	DATE	SIZE PART NO. DWG NO. REV A LFSXSCT-* 001-46139 *C
		QAO	05/08/13	
MATERIAL	SEE NOTES	APPROVED BY	DATE	SCALED TO FIT ENG'G REV SHEET 1 of 1
FINISH		LYD	05/09/13	
		APPROVED BY	DATE	

REVISIONS						
PAGE	ZONE	REV	ECN	DESCRIPTION	DATE	APPROVED
1	-	**	2957466	NEW RELEASE	06/22/10	AMP
1	-	*A	3250541	UPDATED DRAWING BASED ON SUPPLIER'S LATEST DRAWING REVISION CHANGE DRAWING TEMPLATE	05/18/11	QAD/WGL
1	-	*B	4431977	SUNSET REVEN NO CHANGE	07/07/14	QAD



SECTION A-A

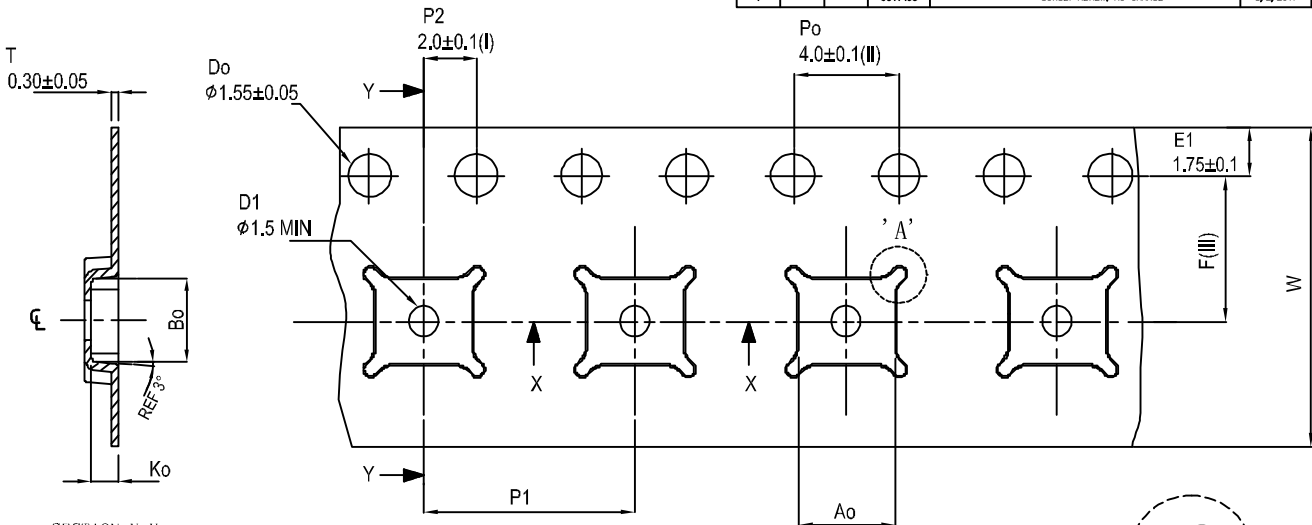
$A_o = 6.30$
 $B_o = 6.30$
 $K_o = 0.80$

- NOTES:
- 10 SPROCKET HOLE PITCH CUMULATIVE TOLERANCE ± 0.2
 - CAMBER IN COMPLIANCE WITH EIA 481
 - POCKET POSITION RELATIVE TO SPROCKET HOLE MEASURED AS TRUE POSITION OF POCKET, NOT POCKET HOLE

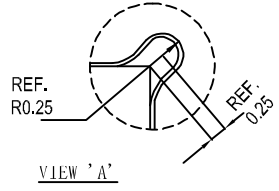
THIS DRAWING CONTAINS INFORMATION WHICH IS THE PROPRIETARY PROPERTY OF CYPRESS SEMICONDUCTOR CORPORATION. THIS DRAWING IS RECEIVED IN CONFIDENCE AND ITS CONTENTS MAY NOT BE DISCLOSED WITHOUT WRITTEN CONSENT OF CYPRESS SEMICONDUCTOR CORPORATION.

UNLESS OTHERWISE SPECIFIED ALL DIMENSIONS ARE IN MILLIMETERS STANDARD TOLERANCES ARE: DECIMALS ± 0.2 .XX ± 0.10 .XXX ± 0.10 ANGLES ±	DESIGNED BY	DATE		
	DRAWN BY	DATE		
	CHECKED BY	DATE		
	APPROVED BY	DATE		
MATERIAL	SEE NOTES	APPROVED BY	DATE	TITLE CARRIER TAPE, 48 QFN 6X6X0.6 MM LQ6XGCT (ADVANTEK)
FINISH		APPROVED BY	DATE	SIZE A PART NO. LQ6XGCT DWG NO. 001-62431 REV *B
SCALED TO FIT			ENG'G REV	SHEET OF

REVISIONS						
PAGE	ZONE	REV	ECN	DESCRIPTION	DATE	APPROVED
1	-	"	4400190	NEW RELEASE	8/4/2014	
1	-	"A	6541498	SUNSET REVIEW, NO CHANGE	8/2/2017	



SECTION Y-Y



VIEW 'A'

NOTES:

- (I) Measured from centreline of sprocket hole to centreline of pocket.
- (II) Cumulative tolerance of 10 sprocket holes is ± 0.20
- (III) Measured from centreline of sprocket hole to centreline of pocket.
- (IV) Other material available.

Ao	4.30 +/- 0.1
Bo	4.30 +/- 0.1
Ko	1.10 +/- 0.1
F	5.50 +/- 0.1
P1	8.00 +/- 0.1
W	12.00 +/- 0.3

ALL DIMENSION IN MILLIMETRES UNLESS OTHERWISE STATED.

THIS DRAWING CONTAINS INFORMATION WHICH IS THE PROPRIETARY PROPERTY OF CYPRESS SEMICONDUCTOR CORPORATION. THIS DRAWING IS RECEIVED IN CONFIDENCE AND ITS CONTENTS MAY NOT BE DISCLOSED WITHOUT WRITTEN CONSENT OF CYPRESS SEMICONDUCTOR CORPORATION.

UNLESS OTHERWISE SPECIFIED ALL DIMENSIONS ARE IN MILLIMETERS DIMENSIONS UNLESS OTHERWISE STATED		DESIGNED BY	DATE	 CYPRESS Company Confidential
DECIMALS .XX ± 0.05 .XXX ± .XXXX +	ANGLES ± 1°	DRAWN BY ELOR	DATE 8/2/2017	
MATERIAL	SEE NOTES	CHECKED BY ZWP	DATE 8/2/2017	TITLE CARRIER TAPE, 24L QFN 4X4X0.60MM (CPAK)
FINISH		APPROVED BY EDH	DATE 8/2/2017	SIZE A
		APPROVED BY OGH	DATE 8/2/2017	PART NO. LQ24UTLCT
		APPROVED BY	DATE	DWG NO. 001-93571
				REV *A
				SCALED TO FIT
				ENG'G REV ENG-00
				SHEET 1 of 1

Cypress Semiconductor Indirect Material Qualification Report

**QTP# 192907 VERSION **
September 2019**

**Qualification of Kostat Carrier Tape
QFN 4x4 / QFN 5x5 / QFN 6x6 Package
CML-Philippines (RA/R)**

**FOR ANY QUESTIONS ON THIS REPORT, PLEASE CONTACT
reliability@cypress.com**

Prepared By:
Honesto Sintos
Reliability Engineer

Reviewed By:
Lorena Zapanta
Reliability Manager

Approved By:
David Hoffman
Reliability Director

INDIRECT MATERIAL QUALIFICATION HISTORY

QTP Number	Description of Qualification Purpose	Date
192907	Qualification of Kostat Carrier Tape for QFN 4x4 / QFN 5x5 and QFN 6x6mm Package at CML-Philippines (RA/R)	Sep 2019

MAJOR MATERIAL INFORMATION USED IN THIS QUALIFICATION	
MATERIAL IDENTIFICATION	
Material Designation:	CARRIER TAPE
Supplier/Vendor:	Kostat
Tape and Reel Part No:	PS+C TYPE "C, W, X, V & T"
Surface Resistivity:	$<10^8 \geq 10^5 \Omega/\text{sq meter}$
Material Name:	TRI-LAMINATE PS+C TYPE C, W, X, V & T CARRIER TAPE
Chemical Name:	Carbon Black
Content:	4~6%
Formula:	N/A
CAS no.:	1333-86-4
Impurities contributing to Hazards:	None
PHYSICAL DATA	
Appearance:	Black Odorless solid sheet
Melting Temperature:	140 - 220 °C
Solubility:	Insoluble in water
Specific Gravity:	1.04~1.06 [25°C]
STABILITY AND REACTIVITY	
Reactivity:	Not reactive
Stability:	Stable at normal temperatures and pressure
Conditions to Avoid:	Heat, flame and other sources of ignition
Materials to Avoid:	Oxidizing agents
Hazardous decomposition Products	Burning may produce carbon dioxide and carbon monoxide.
TOXICOLOGICAL INFORMATION	
Irritation irritant to:	No information is available concerning the toxicity of this product.
Acute oral toxicity (LD50):	
Mutagenicity	
ECOLOGICAL INFORMATION	
Ecotoxicity	Not determined
Persistence and	No degradation

degradability:	
HAZARD IDENTIFICATION	
Most Important Hazards:	Not classified as dangerous substance
Adverse Human Health Effects	
Environmental Effects	
FIRST AID MEASURES	
Physical and Chemical Hazards	Not classified as dangerous substance None
Inhalation	Remove to fresh air. Drink water to clear throat, and blow nose to remove dust.
Skin Contact	Wash off in flowing water or shower
Eye Contact	Flush eyes with large amounts of water for 5 ~ 15 minutes. If irritation persists, contact a physician
Ingestion	Rinse mouth with water to remove dust, and drink plenty of water to help reduce the irritation
FIRE-FIGHTING MEASURES	
Extinguishing Media	Water, water spray, dry chemical, carbon dioxide, foam
Special Fire-Fighting Procedure	Wear self-contained breathing apparatus and protective clothing.
Fire and Explosion Hazards	Flash point : 350°C Flame classification: Not determined Flame propagation: Not determined Lower Explosive Limit (LEL): Not determined Upper Explosive Limit (UEL): Not determined Auto-ignition temperature : 455°C
ACCIDENTAL RELEASE MEASURES	
Methods for Cleaning up	Not Applicable
Personal Precautions	Not Applicable
Environmental precautions	Not Applicable
HANDLING AND STORAGE	
Handling	Avoid heat. Protection against fire and explosion
Storage	Store in a dry, cool place, away from excessive heat

EXPOSURE CONTROLS / PERSONAL PROTECTION	
Ventilation	Local ventilation should be used when processing at high temperature.
Personal Protection	<p>Summary: Protective equipment should be provided as necessary to prevent irritation to the respiratory tract, eyes and skin.</p> <p>Eyes : Safety goggles, Dust-goggles or full-face dust-mask</p> <p>Skin and body : Protective working clothing</p> <p>Hands : Protective gloves</p> <p>Respiratory: A respirator should be used if ventilation is unavailable.</p>
DISPOSAL CONSIDERATIONS	
Waste Disposal	Bury in landfill or burn in adequate incinerator, in accordance with national and local regulations

PROCESS ENGINEERING QUALIFICATION PERFORMED PER SPECIFICATION REQUIREMENTS

Test	Test Condition (Reference Specifications)	Result P/F
CADFIT Analysis	Pass POD & End flash Criteria	P
Dimensional Measurement	POD Drawing-JESD22-B100B	P
Substance Check	European Union RoHS 2002/95/E REACH XVII	P
Surface Resistivity Measurement	Conductive Packing/shipping material: $10^5 \Omega/\text{sq}$ Static dissipative Packing/shipping material: $10^5\text{-}10^{12} \Omega/\text{sq}$	P
Functionality Test	Pass Manufacturability	P
Drop Test	Non-Dry Packed Material: No tears & punctures Boxes: No Complete structural damage, No progressive crumpling/deformed, no tears & punctures.	P

Reliability Test Data

QTP #: 192907

<i>Device</i>	<i>Material</i>	<i>Part #</i>	<i>Package</i>	<i>Finish Site</i>	<i>Duration</i>	<i>Samp</i>	<i>Rej</i>	<i>Failure Mechanism</i>
STRESS: CADFIT ANALYSIS								
N/A	CARRIER TAPE	KS-1208-176	QFN 4x4	CML-RA/R	COMP	1	0	
N/A	CARRIER TAPE	KS-1208-180	QFN 5x5	CML-RA/R	COMP	1	0	
N/A	CARRIER TAPE	KS-1612-686	QFN 6x6	CML-RA/R	COMP	1	0	
STRESS: SUBSTANCE CHECK								
N/A	CARRIER TAPE	KS-1208-176	QFN 4x4	CML-RA/R	COMP	1	0	
N/A	CARRIER TAPE	KS-1208-180	QFN 5x5	CML-RA/R	COMP	1	0	
N/A	CARRIER TAPE	KS-1612-686	QFN 6x6	CML-RA/R	COMP	1	0	
STRESS: FIT & FORM VISUAL INSPECTION								
N/A	CARRIER TAPE	KS-1208-176	QFN 4x4	CML-RA/R	COMP	30	0	
N/A	CARRIER TAPE	KS-1208-180	QFN 5x5	CML-RA/R	COMP	30	0	
N/A	CARRIER TAPE	KS-1612-686	QFN 6x6	CML-RA/R	COMP	30	0	
STRESS: DIMENSIONAL MESAUREMENT								
N/A	CARRIER TAPE	KS-1208-176	QFN 4x4	CML-RA/R	COMP	10	0	
N/A	CARRIER TAPE	KS-1208-180	QFN 5x5	CML-RA/R	COMP	10	0	
N/A	CARRIER TAPE	KS-1612-686	QFN 6x6	CML-RA/R	COMP	10	0	
STRESS: SURFACE RESISTIVITY MEASUREMENT								
N/A	CARRIER TAPE	KS-1208-176	QFN 4x4	CML-RA/R	COMP	10	0	
N/A	CARRIER TAPE	KS-1208-180	QFN 5x5	CML-RA/R	COMP	10	0	
N/A	CARRIER TAPE	KS-1612-686	QFN 6x6	CML-RA/R	COMP	10	0	
STRESS: FUNCTION TEST								
N/A	CARRIER TAPE	KS-1208-176	QFN 4x4	CML-RA/R	COMP	30	0	
N/A	CARRIER TAPE	KS-1208-180	QFN 5x5	CML-RA/R	COMP	30	0	
N/A	CARRIER TAPE	KS-1612-686	QFN 6x6	CML-RA/R	COMP	30	0	
STRESS: DROP TEST								
N/A	CARRIER TAPE	KS-1208-176	QFN 4x4	CML-RA/R	COMP	30	0	
N/A	CARRIER TAPE	KS-1208-180	QFN 5x5	CML-RA/R	COMP	30	0	
N/A	CARRIER TAPE	KS-1612-686	QFN 6x6	CML-RA/R	COMP	30	0	



Reliability Test Data

QTP #: 192907

<i>Device</i>	<i>Material</i>	<i>Part #</i>	<i>Package</i>	<i>Finish Site</i>	<i>Duration</i>	<i>Samp</i>	<i>Rej</i>	<i>Failure Mechanism</i>
STRESS: PEEL BACK FORCE TEST								
N/A	CARRIER TAPE	KS-1208-176	QFN 4x4	CML-RA/R	COMP	30	0	
N/A	CARRIER TAPE	KS-1208-180	QFN 5x5	CML-RA/R	COMP	30	0	
N/A	CARRIER TAPE	KS-1612-686	QFN 6x6	CML-RA/R	COMP	30	0	
STRESS: SPLIT PEEL BACK FORCE TEST								
N/A	CARRIER TAPE	KS-1208-176	QFN 4x4	CML-RA/R	COMP	10	0	
N/A	CARRIER TAPE	KS-1208-180	QFN 5x5	CML-RA/R	COMP	10	0	
N/A	CARRIER TAPE	KS-1612-686	QFN 6x6	CML-RA/R	COMP	10	0	
STRESS: BEND TEST								
N/A	CARRIER TAPE	KS-1208-176	QFN 4x4	CML-RA/R	COMP	1	0	
N/A	CARRIER TAPE	KS-1208-180	QFN 5x5	CML-RA/R	COMP	1	0	
N/A	CARRIER TAPE	KS-1612-686	QFN 6x6	CML-RA/R	COMP	1	0	
STRESS: DETAPING								
N/A	CARRIER TAPE	KS-1208-176	QFN 4x4	CML-RA/R	COMP	30	0	
N/A	CARRIER TAPE	KS-1208-180	QFN 5x5	CML-RA/R	COMP	30	0	
N/A	CARRIER TAPE	KS-1612-686	QFN 6x6	CML-RA/R	COMP	30	0	



Document History Page

Document Title: QTP#192907: QUALIFICATION OF KOSTAT CARRIER TAPE QFN 4x4 / QFN 5x5 / QFN 6x6
PACKAGE CML-PHILIPPINES (RA/R)
Document Number: 002-28512

Rev.	ECN No.	Orig. of Change	Description of Change
**	6676833	HSTO	Initial Spec Release

MPN's Affected
CY22391LTXC-06T
CY24292LFXCT
CY24292LFXIT
CY2542QC002T
CY2542QFCT
CY2544QC011T
CY2544QC013T
CY2544QC014T
CY2544QC016T
CY2544QC023T
CY2544QFCT
CY2544QFIT
CY2545QC009T
CY2545QC010T
CY2545QC020T
CY2545QC021T
CY2545QC022T
CY2545QIT
CY2547QIT
CY2548QC003T
CY2548QC004T
CY2548QIT
CY7C60323-LTXCT
CY7C60445-32LQXCT
CY7C63833-LTXCT
CY7C64343-32LQXCT
CY7C64345-32LQXCT
CY7C64346-32LQXCT
CY7C65210-24LTXIT
CY7C65210A-24LTXIT
CY7C65211-24LTXIT
CY7C65211A-24LTXIT
CY7C65213-32LTXIT
CY7C65213A-32LTXIT
CY7C65215-32LTXIT
CY7C65215A-32LTXIT
CY7C65217-24LTXIT
CY7C65217A-24LTXIT
CY7C65219-40LQXIT
CY7C65221-24LTXIT
CY7C68003-24LQXIT
CY8C20324-12LQXIT
CY8C20334-12LQXIT
CY8C20336A-24LQXIT
CY8C20337-24LQXIT
CY8C20346A-24LQXIT
CY8C20347-24LQXIT
CY8C20347S-24LQXIT
CY8C20396A-24LQXIT
CY8C20424-12LQXIT

CY8C20434-12LQXIT
CY8C20436A-24LQXIT
CY8C20436AN-24LQXIT
CY8C20437-24LQXIT
CY8C20446A-24LQXIT
CY8C20447-24LQXIT
CY8C20447S-24LQXIT
CY8C20466A-24LQXIT
CY8C20467-24LQXIT
CY8C20467S-24LQXIT
CY8C20496A-24LQXIT
CY8C20636A-24LQXIT
CY8C20637-24LQXIT
CY8C20646A-24LQXIT
CY8C20646AS-24LQXIT
CY8C20647-24LQXIT
CY8C20647S-24LQXIT
CY8C20666A-24LQXIT
CY8C20666AS-24LQXIT
CY8C20667-24LQXIT
CY8C20667S-24LQXIT
CY8C21323-24LQXIT
CY8C21434-24LQXIT
CY8C21434-24LTXIT
CY8C21634-24LTXIT
CY8C23533-24LQXIT
CY8C4014LQI-412T
CY8C4014LQI-422T
CY8C4024LQI-S401T
CY8C4024LQI-S402T
CY8C4024LQI-S403T
CY8C4024LQI-S411T
CY8C4024LQI-S412T
CY8C4024LQI-S413T
CY8C4025LQI-S401T
CY8C4025LQI-S402T
CY8C4025LQI-S411T
CY8C4025LQI-S412T
CY8C4045LQI-S411T
CY8C4045LQI-S412T
CY8C4124LQI-443T
CY8C4124LQI-S412T
CY8C4124LQI-S413T
CY8C4124LQI-S432T
CY8C4124LQI-S433T
CY8C4125LQI-483T
CY8C4125LQI-S412T
CY8C4125LQI-S413T
CY8C4125LQI-S422T
CY8C4125LQI-S423T
CY8C4125LQI-S432T

CY8C4125LQI-S433T
CY8C4146LQI-S422T
CY8C4146LQI-S423T
CY8C4146LQI-S432T
CY8C4146LQI-S433T
CY8C4245LQI-483T
CY8CMBR2010-24LQXIT
CY8CMBR2016-24LQXIT
CY8CMBR2110-24LQXIT
CY8CMBR3106S-LQXIT
CY8CTMA440-48LQIT
CY8CTMA445-44LQIT
CY8CTMA445-48LQIT
CY8CTMA461-48LQIT
CY8CTMA463-44LQIT
CY8CTMA463-48LQIT
CY8CTMA463-56LQIT
CYPD1120-40LQXIT
CYPD1121-40LQXIT
CYPD1122-40LQXIT
CYPD1134-40LQXIT
CYPD2119-24LQXIT
CYPD2120-24LQXIT
CYPD2121-24LQXIT
CYPD2122-24LQXIT
CYPD2125-24LQXIT
CYPD2134-24LQXIT
CYPD2134-24LQXQT
CYPD3120-40LQXIT
CYPD3121-40LQXIT
CYPD3122-40LQXIT
CYPD3123-40LQXIT
CYPD3125-40LQXIT
CYPD3135-32LQXQT
CYPD3135-40LQXIT
CYPD3135-40LQXQT
CYPD4125-40LQXIT
CYPD4126-40LQXIT
CYPD4225-40LQXIT
CYPD4226-40LQXIT
CYPD4236-40LQXIT
CYPD5125-40LQXIT
CYTMA445-44LQI28AAAT
CYTMA445-44LQI33AAAT
CYTMA445-44LQI33ABAT
CYTMA445-44LQI33ABT
CYTMA445-44LQI33ACAT
CYTMA445-44LQI33AEAT
CYTMA445-44LQI33ZZAT
CYTMA445-44LQI33ZZT
CYTMA445-48LQI36AAAT

CYTMA445-48LQI36ABAT
CYTMA445-48LQI36ACAT
CYTMA445-48LQI36AEAT
CYTMA445-48LQI36AET
CYTMA445-48LQI36ZZAT
CYTMA445A-44LQI28AAT
CYTMA445A-44LQI28ABT
CYTMA445A-44LQI33AAT
CYTMA445A-44LQI33ABT
CYTMA445A-44LQI35AAT
CYTMA445A-44LQI35ABT
CYTMA445A-44LQI35ACT
CYTMA445A-44LQI35AET
CYTMA445A-44LQI35ZZT
CYTMA445A-48LQI36AAT
CYTMA445A-48LQI36ABT
CYTMA445A-48LQI36ACT
CYTMA445A-48LQI36AET
CYTMA445A-48LQI36BAT
CYTMA445A-48LQI36ZZT
CYTMA448-56LQI44AAT
CYTMA448-56LQI44ABT
CYTMA448-56LQI44AET
CYTMA448-56LQI44AWT
CYTMA448-56LQI44ZXT
CYTMA545-44LQI33AAAT
CYTMA545-44LQI33ABAT
CYTMA545-48LQI36AAAT
CYTMA545-48LQI36ABAT
CYTMA545-48LQI36BBAT
CYTMA545-48LQI36ZZAT
CYTMA545-48LQI36ZZT
CYTMA568-56LQI44AAT
CYTMA568-56LQI44ABT
CYTMA568-56LQI44ADT
CYTMA568-56LQI44APT
CYTMA568-56LQI44AWT
CYTMA568-56LQI44BBT
CYTMA568-56LQI44CBT
CYTMA568-56LQI44ZXT
CYTR21100-44LQI28T
CYTR-31001A-44LQI28T
CYTT21100-44LQI28T
CYTT21100-44LQI33T
CYTT21100-44LQI35T
CYTT21100-48LQI36T
CYTT21100-56LQI40T
CYTT21100-56LQI44T
CYTT21100-56LQI48T
CYTT21401-44LQI28T
CYTT21401-44LQI33T

CYTT21401-44LQI35T
CYTT21401-48LQI36T
CYTT21401-56LQI40T
CYTT21401-56LQI44T
CYTT21401-56LQI48T
CYTT21402-44LQI28T
CYTT21402-44LQI33T
CYTT21402-44LQI35T
CYTT21402-48LQI36T
CYTT21402-56LQI40T
CYTT21402-56LQI44T
CYTT21402-56LQI48T
CYTT21403-44LQI35T
CYTT21403-48LQI36T
CYTT21403-56LQI40T
CYTT21403-56LQI44T
CYTT21403-56LQI48T
CYTT31401-56LQI48T
CYTT31702-56LQI48T
CYTT31802-56LQI48T
CYTT32302-56LQI48T
CYW20719B1KUMLGT
CYW20721B1KUMLGT
CYW20730A1KML2GT
CYW20730A2KML2GT
CYW20732A0KML2GT
CYW20736A1KML2GT
CYW20737A1KML2GT
CYW20930A0KML2GT
CYW20930A2KML2GT
CG7272AAT
CG7297AMT
CG7392AMT
CG7459AMT
CG7470AMT
CG7476AFT
CG7479AMT
CG7496AAT
CG7497AAT
CG7527AMT
CG7531AMT
CG7539AMT
CG7541AMT
CG7554AAT
CG7558AAT
CG7560AAT
CG7561AAT
CG7566AFT
CG7578AAT
CG7605AMT
CG7608AAT

CG7610AMT
CG7625AAT
CG7662AAT
CG7663AAT
CG7718AMT
CG7720AMT
CG7776AMT
CG7787AAT
CG7788AAT
CG7884AAT
CG7890AAT
CG7891AAT
CG7911AMT
CG8081AMT
CG8090AAT
CG8136AMT
CG8152AAT
CG8178AAT
CG8190AMT
CG8328AMT
CG8333AMT
CG8349ATT
CG8360AMT
CG8364AMT
CG8371AAT
CG8372AMT
CG8374AFT
CG8378AAT
CG8431AAT
CG8454AMT
CG8469AMT
CG8472AAT
CG8475AAT
CG8477AAT
CG8494AAT
CG8496AAT
CG8498AAT
CG8504AAT
CG8506AAT
CG8508AAT
CG8510AAT
CG8513AAT
CG8515AAT
CG8522AAT
CG8524AAT
CG8526AAT
CG8529AAT
CG8548AAT
CG8549AAT
CG8584AAT
CG8586AMT

CG8646AAT
CG8652AFT
CG8682AFT
CG8751AFT
CG8765AFT
CG8851AFT
CG8863AFT
CG8871AFT
CP7349ATT
CP7437ATT
CP7463CTT
CP7464ATT
CP7505BTT
CP7581ATT
CP7583ATT
CP7669ATT
CP7741ATT
CP7769ATT
CP7770BTT
CP7771BTT
CP7862ATT
CP7988ATT
CP7995ATT
CP8007ATT
CP8011BTT
CP8063ATT
CP8064ATT
CP8068ATT
CP8109ATT
CP8112ATT
CP8121ATT
CP8121BTT
CP8125ATT
CP8125BTT
CP8132BTT
CP8132CTT
CP8132DTT
CP8133ATT
CP8133BTT
CP8133CTT
CP8133DTT
CP8151ATT
CP8330ATT
CP8347ATT
CP8358ATT
CP8363ATT
CP8376ETT
CP8376GTT
CP8377ATT
CP8380ATT
CP8387ATT

CP8400ATT
CP8400BTT
CP8400CTT
CP8401ATT
CP8407ATT
CP8412ATT
CP8455ATT
CP8456ATT
CP8461ATT
CP8483ATT
CP8483BTT
CP8483CTT
CP8483DTT
CP8538ATT
CP8562ATT
CP8568ATT
CP8570ATT
CP8585ATT
CP8617ATT
CP8627ATT
CP8627BTT
CP8628ATT
CP8628BTT
CP8628CTT
CP8642ATT
CP8654ATT
CP8654BTT
CP8654CTT
CP8658ATT
CP8659ATT
CP8666ATT
CP8666BTT
CP8685ATT
CP8686CTT
CP8688ATT
CP8688BTT
CP8691ATT
CP8742ATT
CP8754ATT
CP8787ATT
CP8788ATT
CP8814ATT
CP8815ATT
CP8820ATT
CP8849ATT
CP8864ATT
CS445AT
CS7224AAT
CS7453ATT
CS8088AMT
CS8435AAT

CS8590AMT
CS8750AMT
CS8807AMT
TMA140-48LQI-01T
TMA140-LQI-01T
TMA140-LQI-09T
TMA300E-36LQXIT
TMA300E-48LQXIT
TMA340-48LQI-01T
TMA340-48LQI-03T
TMA340-48LQI-09T
TMA340-LQI-01T
TMA440-48LQIT
TMA445-44LQI28AAAT
TMA445-44LQI33AAAT
TMA445-44LQI33ABAT
TMA445-44LQI33ABT
TMA445-44LQI33ACAT
TMA445-44LQI33AEAT
TMA445-44LQI33ZZAT
TMA445-44LQI33ZZT
TMA445-44LQIT
TMA445-48LQI36AAAT
TMA445-48LQI36ABAT
TMA445-48LQI36ACAT
TMA445-48LQI36AEAT
TMA445-48LQI36AET
TMA445-48LQI36ZZAT
TMA445-48LQIT
TMA445A-44LQI28AAT
TMA445A-44LQI28ABT
TMA445A-44LQI33AAT
TMA445A-44LQI33ABT
TMA445A-44LQI35AAT
TMA445A-44LQI35ABT
TMA445A-44LQI35ACT
TMA445A-44LQI35AET
TMA445A-44LQI35ZZT
TMA445A-48LQI36AAT
TMA445A-48LQI36ABT
TMA445A-48LQI36ACT
TMA445A-48LQI36AET
TMA445A-48LQI36BAT
TMA445A-48LQI36ZZT
TMA448-56LQI44AAT
TMA448-56LQI44ABT
TMA448-56LQI44AET
TMA448-56LQI44AWT
TMA448-56LQI44ZXT
TMA461-48LQIT
TMA463-44LQIT

TMA463-48LQIT
TMA463-56LQIT
TMA545-44LQI33AAAT
TMA545-44LQI33ABAT
TMA545-48LQI36AAAT
TMA545-48LQI36ABAT
TMA545-48LQI36BBAT
TMA545-48LQI36ZZAT
TMA545-48LQI36ZZT
TMA562-56LQI44T
TMA562-56LQI48T
TMA568-56LQI44AAT
TMA568-56LQI44ABT
TMA568-56LQI44ADT
TMA568-56LQI44APT
TMA568-56LQI44AWT
TMA568-56LQI44BBT
TMA568-56LQI44CBT
TMA568-56LQI44ZXT
TMG200A-32LQXIT
TMG201A-32LQXIT
TMG240-LQI-01T
TST200A-24LQXIT
TST200A-32LQXIT
TST241-LQI-01T
TST242-LQI-01T
TT21100-44LQI28T
TT21100-44LQI33T
TT21100-44LQI35T
TT21100-48LQI36T
TT21100-56LQI40T
TT21100-56LQI44T
TT21100-56LQI48T
TT21401-44LQI28T
TT21401-44LQI33T
TT21401-44LQI35T
TT21401-48LQI36T
TT21401-56LQI40T
TT21401-56LQI44T
TT21401-56LQI48T
TT21402-44LQI28T
TT21402-44LQI33T
TT21402-44LQI35T
TT21402-48LQI36T
TT21402-56LQI40T
TT21402-56LQI44T
TT21402-56LQI48T
TT21403-44LQI35T
TT21403-48LQI36T
TT21403-56LQI40T
TT21403-56LQI44T

TT21403-56LQI48T
TT31401-56LQI48T
TT31702-56LQI48T
TT31802-56LQI48T
TT32302-56LQI48T