

**Product information**

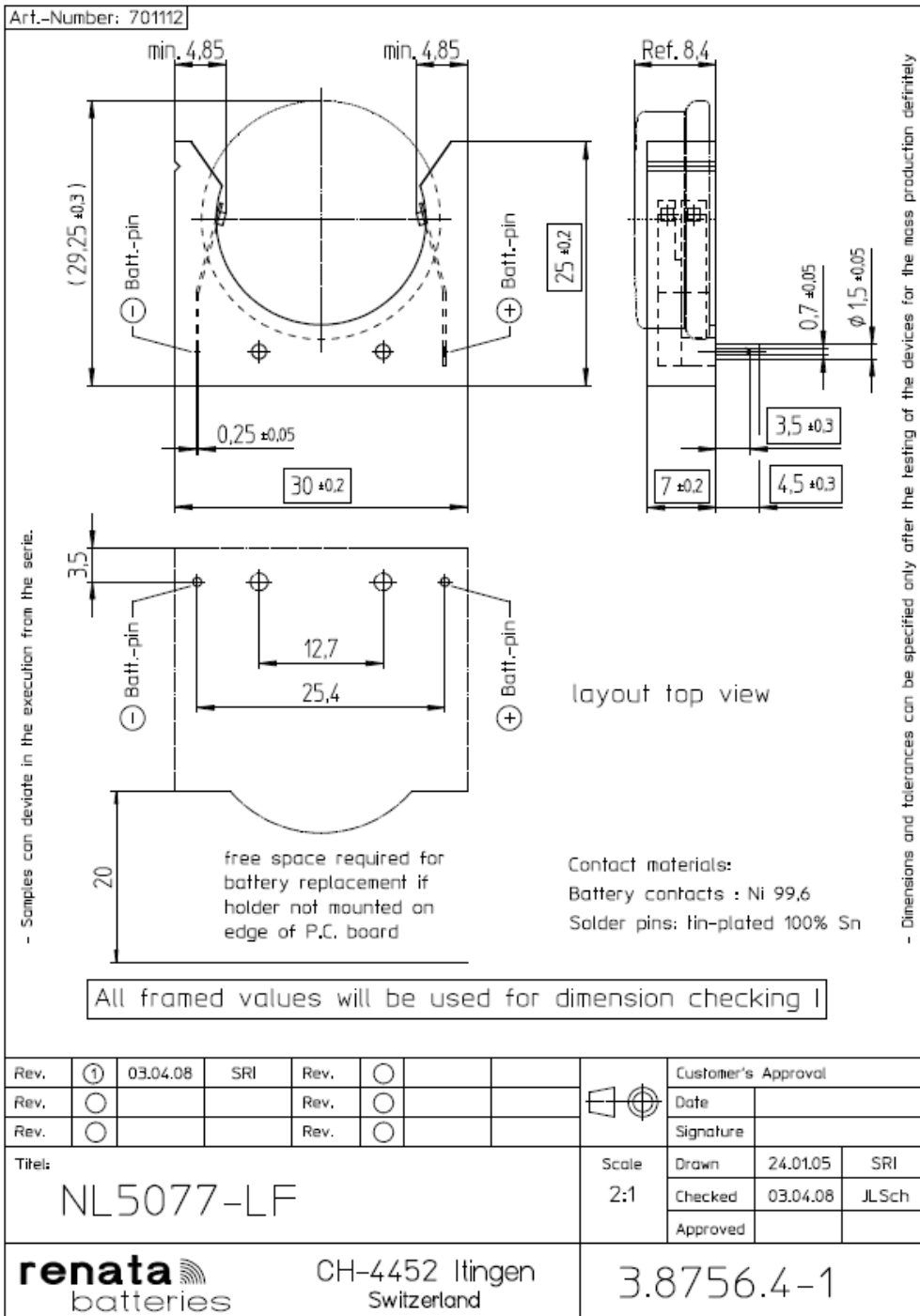
<b>Item affected / Type</b>	<b>Battery Holder NL5077-LF</b>		
<b>Part - Nr. (SAP)</b>	<b>701112</b>	<b>Drawing-Nr.</b>	<b>3.8756.4-1</b>

<b>Product Change Notification</b>	<b>Reason for proposed change</b>	<b>Description of change</b>
	<input type="checkbox"/> Customer requirement <input type="checkbox"/> Quality complaint Nr. .... <input type="checkbox"/> Quality improvement <input type="checkbox"/> Process improvement – <input type="checkbox"/> technical modification <input type="checkbox"/> Normative requirements <input type="checkbox"/> Cost efficiency <input type="checkbox"/> Second source <input checked="" type="checkbox"/> Correction of the documents <input type="checkbox"/> Production location, change <input type="checkbox"/> see attachment	Correction of tolerances and dimensions on drawing

<b>Product Change Notification</b>	<b>Description and reason of change</b>
	<p>Adjustment of tolerances and pin dimension to current product. Renata always produced and released battery holder per new adjusted drawing.</p> <p>Concerned dimensions and tolerances are as below: Marked dimensions &amp; tolerances are adjusted</p> <div style="display: flex; justify-content: space-around; align-items: flex-end;"> <div style="text-align: center;"> <p>actual drawing 3.8756.4-1</p> </div> <div style="text-align: center;"> <p>adjusted drawing 3.8755.4-2 according real production</p> </div> </div> <p>See Annex I and Annex II on following pages for full drawings.</p>

<b>Customer Part Number</b>	<b>MFgr Part Number</b>	<b>MFgr Part Number (new)</b>	<b>DCN Effectivity date</b>	<b>Sample availability date</b>	<b>Last time delivery</b>	<b>Expected supplier qual. date</b>
n/a	701112	701112	immediate	n/a	n/a	n/a

Annex I: actual drawing (→becoming obsolete)



Annex II: adjusted drawing (→immediately effective)

