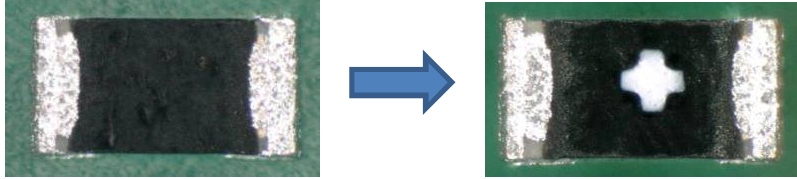


Product Change Notice : ERJ -PA2 Series Anti -Surge Thick Film Chip Resistors

PCN.PG 24.12.7.2018

12.7.2018

About This Notice:	Panasonic is changing the marking on the ERJ -PA2 Series Anti -Surge Thick Film Chip Resistors to help better identify them from the standard 0402 Series.
Effective Date:	December 1, 2018
Change Details:	Panasonic is adding a plus (+) symbol to help identify the ERJ -PA2 Series from other 0402 Series.
Affected Parts:	See attached .
Datasheet(s):	See attached .
Notes:	

Anti-Surge Thick Film Chip Resistors

Type: ERJ PA2, P03, PA3, P06, P08, P14

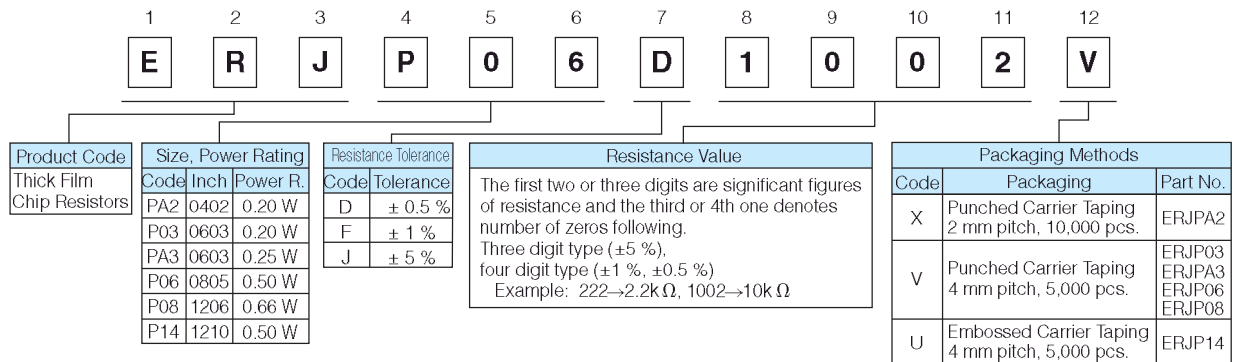


Features

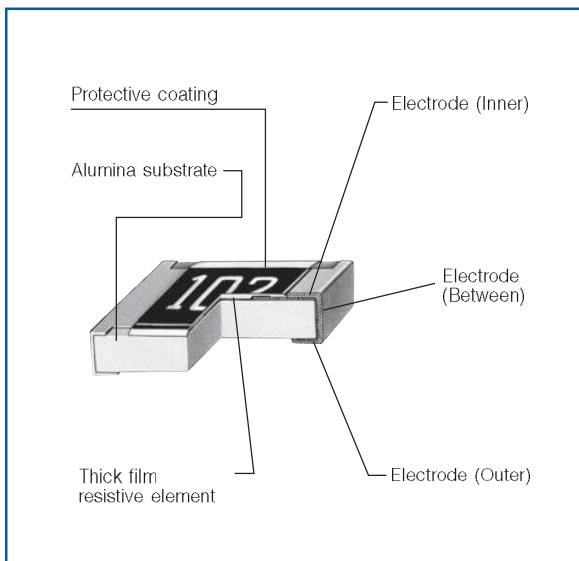
- ESD surge characteristics superior to standard metal film resistors
- High reliability
Metal glaze thick film resistive element and three layers of electrodes
- Suitable for both reflow and flow soldering
- High power ... 0.20 W : 0402 inch / 1005 mm size (ERJPA2), 0603 inch / 1608 mm size (ERJP03)
0.25 W : 0603 inch / 1608 mm size (ERJPA3)
0.50 W : 0805 inch / 2012 mm size (ERJP06), 1210 inch / 3225 mm size (ERJP14)
0.66 W : 1206 inch / 3216 mm size (ERJP08)
- Reference Standards... IEC 60115-8, JIS C 5201-8, EIAJ RC-2134B
- AEC-Q200 qualified
- RoHS compliant

■ **As for Packaging Methods, Land Pattern, Soldering Conditions and Safety Precautions,**
Please see Data Files

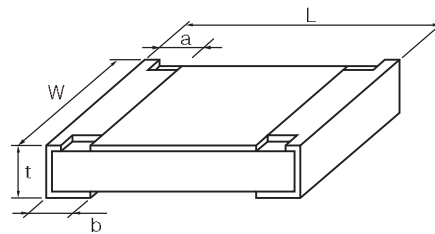
Explanation of Part Numbers



Construction



Dimensions in mm (not to scale)



Part No.	Dimensions (mm)					Mass (Weight) [g/1000 pcs.]
	L	W	a	b	t	
ERJPA2	1.00 ^{+0.05}	0.50 ^{+0.05}	0.20 ^{+0.15}	0.25 ^{+0.05}	0.35 ^{+0.05}	0.8
ERJP03	1.60 ^{+0.15}	0.80 ^{+0.15}	0.15 ^{+0.15}	0.30 ^{+0.15}	0.45 ^{+0.10}	2
ERJPA3	1.60 ^{+0.15}	0.80 ^{+0.15}	0.15 ^{+0.15}	0.25 ^{+0.10}	0.45 ^{+0.10}	2
ERJP06	2.00 ^{+0.20}	1.25 ^{+0.10}	0.25 ^{+0.20}	0.40 ^{+0.20}	0.60 ^{+0.10}	4
ERJP08	3.20 ^{+0.05}	1.60 ^{+0.15}	0.40 ^{+0.20}	0.50 ^{+0.20}	0.60 ^{+0.10}	10
ERJP14	3.20 ^{+0.20}	2.50 ^{+0.20}	0.35 ^{+0.20}	0.50 ^{+0.20}	0.60 ^{+0.10}	16

Ratings

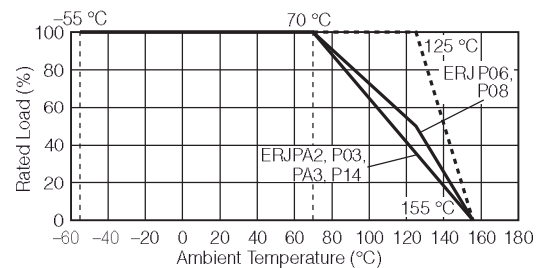
Part No. (inch size)	Power Rating ⁽³⁾ at 70 °C (W)	Limiting Element Voltage ⁽¹⁾ (V)	Maximum Overload Voltage ⁽²⁾ (V)	Resistance Tolerance (%)	Resistance Range (Ω)	T.C.R. ($\times 10^{-6}/^{\circ}\text{C}$)	Category Temperature Range (°C)	AEC-Q200 Grade
ERJPA2 (0402)	0.20	50	100	$\pm 0.5, \pm 1$	10 to 1M (E24, E96)	± 100	-55 to +155	Grade 0
				± 5	10 to 1M (E24)	± 200		
ERJP03 (0603)	0.20	150	200	± 0.5	10 to 1M (E24, E96)	± 150	-55 to +155	Grade 0
				± 1	10 to 1M (E24, E96)	± 200		
				± 5	1 to 1M (E24)	R < 10Ω : -150 to +400 10Ω ≤ R : ±200		
ERJPA3 (0603)	0.25	150	200	$\pm 0.5, \pm 1$	10 to 1M (E24, E96)	± 100	-55 to +155	Grade 0
				± 5	1 to 1.5M (E24)	± 200		
ERJP06 (0805)	0.50	400	600	$\pm 0.5, \pm 1$	10 to 1M (E24, E96)	R < 33Ω : ±300 33Ω ≤ R : ±100	-55 to +155	Grade 0
				± 5	1 to 3.3M (E24)	R < 10Ω : -100 to +600 10Ω ≤ R < 33Ω : ±300 33Ω ≤ R : ±200		
ERJP08 (1206)	0.66	500	1000	$\pm 0.5, \pm 1$	10 to 1M (E24, E96)	± 100	-55 to +155	Grade 0
				± 5	1 to 10M (E24)	R < 10Ω : -100 to +600 10Ω ≤ R : ±200		
ERJP14 (1210)	0.50	200	400	$\pm 0.5, \pm 1$	10 to 1M (E24, E96)	± 100	-55 to +155	Grade 0
				± 5	1 to 1M (E24)	R < 10Ω : -100 to +600 10Ω ≤ R : ±200		

- (1) Rated Continuous Working Voltage (RCWV) shall be determined from $\text{RCWV} = \sqrt{\text{Power Rating} \times \text{Resistance Values}}$, or Limiting Element Voltage listed above, whichever less.
 (2) Overload Test Voltage (OTV) shall be determined from $\text{OTV} = \text{Specified Magnification (refer to performance)} \times \text{RCWV}$ or Maximum Overload Voltage listed above, whichever less.
 (3) Use it on the condition that the case temperature is below the upper category temperature.

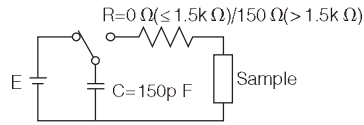
Power Derating Curve

For resistors operated in ambient temperatures above 70 °C, power rating shall be derated in accordance with the figure on the right.

* When the temperature of ERJP14 is 155 °C or less, the derating start temperature can be changed to 125 °C. (See the dotted line)

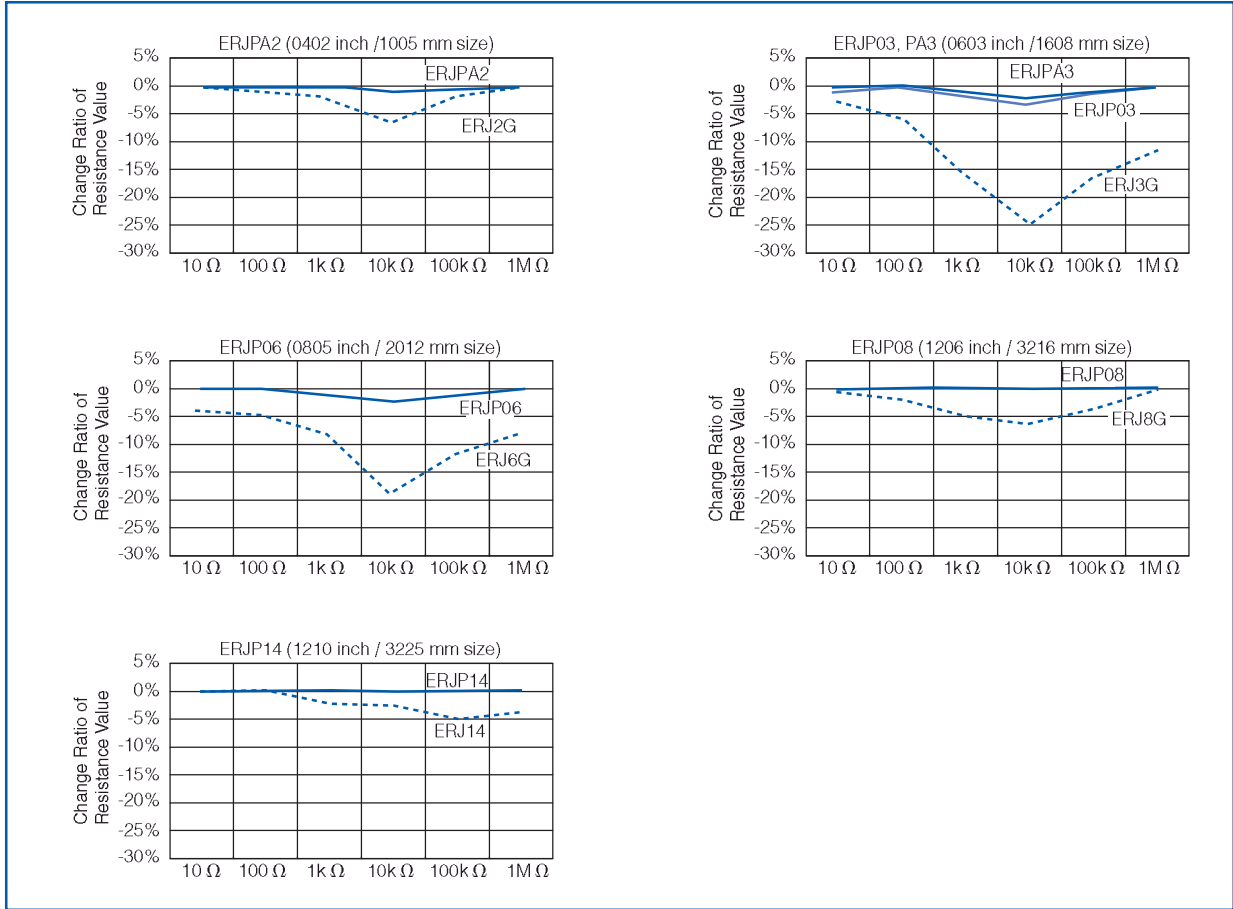


ESD Characteristic



0402 inch size : E=±1k V
 0603, 0805, 1206, 1210 inch size : E=±3k V

— Anti-Surge Thick Film Chip Resistors(ERJP Type)
 - - - Thick Film Chip Resistors(ERJ Type)



Performance

Test Item	Performance Requirements	Test Conditions
Resistance	Within Specified Tolerance	20 °C
T. C. R.	Within Specified T. C. R.	+25 °C/+155 °C (ERJPA2 : +125 °C)
Overload	±2% Only when it is ERJP03 (D), P14 (D) : ±0.5%	ERJP06 : Rated Voltag×1.77, 5 s ERJPA2, ERJPA3, ERJP08 : Rated Voltag×2.0, 5 s ERJP03, ERJP14 : Rated Voltag×2.5, 5 s
Resistance to Soldering Heat	D : ±0.5%, F, J : ±1%	270 °C, 10 s
Rapid Change of Temperature	±1%	-55 °C (30 min.) / +155 °C (30 min.) , 100 cycles
High Temperature Exposure	±1%	+155 °C, 1000 h
Damp Heat, Steady State	±1%	60 °C, 90% to 95%RH, 1000 h
Load Life in Humidity	±3% Only when it is ERJP03 (D), P14 (D) : ±1%	60 °C, 90% to 95%RH, Rated Voltage, 1.5 h ON / 0.5 h OFF cycle, 1000 h
Endurance at 70 °C	±3% Only when it is ERJP03 (D), P14 (D) : ±1%	70 °C, Rated Voltage, 1.5 h ON / 0.5 h OFF cycle, 1000 h

⚠ Safety Precautions (Common precautions for Surface Mount Resistors)

The following are precautions for individual products. Please also refer to the common precautions for Fixed Resistors in this catalog.

1. Take measures against mechanical stress during and after mounting of Surface Mount Resistors (hereafter called the resistors) so as not to damage their electrodes and protective coatings.
Be careful not to misplace the resistors on the land patterns. Otherwise, solder bridging may occur.
2. Keep the rated power and ambient temperature within the specified derating curve.
Some circuit boards, wiring patterns, temperatures of heat generated by adjacent components, or ambient temperatures can become factors in the rise of the temperature of the resistors, regardless of the level of power applied. Therefore, check the conditions before use and optimize them so as not to damage the boards and peripheral components.
Make sure to contact us before using the resistors under special conditions.
3. If a transient load (heavy load in a short time) like a pulse is expected to be applied, check and evaluate the operations of the resistors when installed in your products before use.
Never exceed the rated power. Otherwise, the performance and/or reliability of the resistors may be impaired.
4. Before using halogen-based or other high-activity flux, check the possible effects of the flux residues on the performance and reliability of the resistors.
5. When soldering with a soldering iron, never touch the resistors' bodies with the tip of the soldering iron. When using a soldering iron with a high temperature tip, finish soldering as quickly as possible (within three seconds at 350 °C max.).
6. As the amount of applied solder becomes larger, the mechanical stress applied to the resistors increases, causing problems such as cracks and faulty characteristics. Avoid applying an excessive amounts of solder.
7. When the resistors' protective coatings are chipped, flawed, or removed, the characteristics of the resistors may be impaired. Take special care not to apply mechanical shock during automatic mounting or cause damage during handling of the boards with the resistors mounted.
8. Do not apply shock to the resistors or pinch them with a hard tool (e.g. pliers and tweezers). Otherwise, the resistors' protective coatings and bodies may be chipped, affecting their performance.
9. Avoid excessive bending of printed circuit boards in order to protect the resistors from abnormal stress.
10. Do not immerse the resistors in solvent for a long time. Before using solvent, carefully check the effects of immersion.
11. Transient voltage
If there is a possibility that the transient phenomenon (significantly high voltage applied in a short time) may occur or that a high voltage pulse may be applied, make sure to evaluate and check the characteristics of Fixed Metal (Oxide) Film Resistors mounted on your product rather than only depending on the calculated power limit or steady-state conditions to complete the design or decide to use the resistors.
12. Do not apply excessive tension to the terminals.

⚠ Safety Precautions (Common precautions for Fixed Resistors)

- When using our products, no matter what sort of equipment they might be used for, be sure to make a written agreement on the specifications with us in advance. The design and specifications in this catalog are subject to change without prior notice.
- Do not use the products beyond the specifications described in this catalog.
- This catalog explains the quality and performance of the products as individual components. Before use, check and evaluate their operations when installed in your products.
- Install the following systems for a failsafe design to ensure safety if these products are to be used in equipment where a defect in these products may cause the loss of human life or other significant damage, such as damage to vehicles (automobile, train, vessel), traffic lights, medical equipment, aerospace equipment, electric heating appliances, combustion/gas equipment, rotating equipment, and disaster/crime prevention equipment.
 - * Systems equipped with a protection circuit and a protection device
 - * Systems equipped with a redundant circuit or other system to prevent an unsafe status in the event of a single fault

(1) Precautions for use

- These products are designed and manufactured for general and standard use in general electronic equipment (e.g. AV equipment, home electric appliances, office equipment, information and communication equipment)
- These products are not intended for use in the following special conditions. Before using the products, carefully check the effects on their quality and performance, and determine whether or not they can be used.
 1. In liquid, such as water, oil, chemicals, or organic solvent
 2. In direct sunlight, outdoors, or in dust
 3. In salty air or air with a high concentration of corrosive gas, such as Cl₂, H₂S, NH₃, SO₂, or NO₂
 4. Electric Static Discharge (ESD) Environment
These components are sensitive to static electricity and can be damaged under static shock (ESD). Please take measures to avoid any of these environments.
Smaller components are more sensitive to ESD environment.
 5. Electromagnetic Environment
Avoid any environment where strong electromagnetic waves exist.
 6. In an environment where these products cause dew condensation
 7. Sealing or coating of these products or a printed circuit board on which these products are mounted, with resin or other materials
- These products generate Joule heat when energized. Carefully position these products so that their heat will not affect the other components.
- Carefully position these products so that their temperatures will not exceed the category temperature range due to the effects of neighboring heat-generating components. Do not mount or place heat-generating components or inflammables, such as vinyl-coated wires, near these products.
- Note that non-cleaning solder, halogen-based highly active flux, or water-soluble flux may deteriorate the performance or reliability of the products.
- Carefully select a flux cleaning agent for use after soldering. An unsuitable agent may deteriorate the performance or reliability. In particular, when using water or a water-soluble cleaning agent, be careful not to leave water residues. Otherwise, the insulation performance may be deteriorated.

(2) Precautions for storage

The performance of these products, including the solderability, is guaranteed for a year from the date of arrival at your company, provided that they remain packed as they were when delivered and stored at a temperature of 5 °C to 35 °C and a relative humidity of 45 % to 85 %.

Even within the above guarantee periods, do not store these products in the following conditions. Otherwise, their electrical performance and/or solderability may be deteriorated, and the packaging materials (e.g. taping materials) may be deformed or deteriorated, resulting in mounting failures.

1. In salty air or in air with a high concentration of corrosive gas, such as Cl₂, H₂S, NH₃, SO₂, or NO₂
2. In direct sunlight

<Package markings>

Package markings include the product number, quantity, and country of origin. In principle, the country of origin should be indicated in English.

Panasonic PCN.PG24.12.7.2018 ERJ-PA2
Series Chip Resistors Affected Parts

Part Number

ERJ-PA2D1000X
ERJ-PA2D1001X
ERJ-PA2D1002X
ERJ-PA2D1003X
ERJ-PA2D1004X
ERJ-PA2D1020X
ERJ-PA2D1021X
ERJ-PA2D1022X
ERJ-PA2D1023X
ERJ-PA2D1050X
ERJ-PA2D1051X
ERJ-PA2D1052X
ERJ-PA2D1053X
ERJ-PA2D1070X
ERJ-PA2D1071X
ERJ-PA2D1072X
ERJ-PA2D1073X
ERJ-PA2D10R0X
ERJ-PA2D10R2X
ERJ-PA2D10R5X
ERJ-PA2D10R7X
ERJ-PA2D1100X
ERJ-PA2D1101X
ERJ-PA2D1102X
ERJ-PA2D1103X
ERJ-PA2D1130X
ERJ-PA2D1131X
ERJ-PA2D1132X
ERJ-PA2D1133X
ERJ-PA2D1150X
ERJ-PA2D1151X
ERJ-PA2D1152X
ERJ-PA2D1153X
ERJ-PA2D1180X
ERJ-PA2D1181X
ERJ-PA2D1182X
ERJ-PA2D1183X
ERJ-PA2D11R0X
ERJ-PA2D11R3X
ERJ-PA2D11R5X
ERJ-PA2D11R8X
ERJ-PA2D1200X
ERJ-PA2D1201X
ERJ-PA2D1202X

ERJ-PA2D1203X
ERJ-PA2D1210X
ERJ-PA2D1211X
ERJ-PA2D1212X
ERJ-PA2D1213X
ERJ-PA2D1240X
ERJ-PA2D1241X
ERJ-PA2D1242X
ERJ-PA2D1243X
ERJ-PA2D1270X
ERJ-PA2D1271X
ERJ-PA2D1272X
ERJ-PA2D1273X
ERJ-PA2D12R0X
ERJ-PA2D12R1X
ERJ-PA2D12R4X
ERJ-PA2D12R7X
ERJ-PA2D1300X
ERJ-PA2D1301X
ERJ-PA2D1302X
ERJ-PA2D1303X
ERJ-PA2D1330X
ERJ-PA2D1331X
ERJ-PA2D1332X
ERJ-PA2D1333X
ERJ-PA2D1370X
ERJ-PA2D1371X
ERJ-PA2D1372X
ERJ-PA2D1373X
ERJ-PA2D13R0X
ERJ-PA2D13R3X
ERJ-PA2D13R7X
ERJ-PA2D1400X
ERJ-PA2D1401X
ERJ-PA2D1402X
ERJ-PA2D1403X
ERJ-PA2D1430X
ERJ-PA2D1431X
ERJ-PA2D1432X
ERJ-PA2D1433X
ERJ-PA2D1470X
ERJ-PA2D1471X
ERJ-PA2D1472X
ERJ-PA2D1473X
ERJ-PA2D14R0X
ERJ-PA2D14R3X
ERJ-PA2D14R7X
ERJ-PA2D1500X
ERJ-PA2D1501X

ERJ-PA2D1502X
ERJ-PA2D1503X
ERJ-PA2D1540X
ERJ-PA2D1541X
ERJ-PA2D1542X
ERJ-PA2D1543X
ERJ-PA2D1580X
ERJ-PA2D1581X
ERJ-PA2D1582X
ERJ-PA2D1583X
ERJ-PA2D15R0X
ERJ-PA2D15R4X
ERJ-PA2D15R8X
ERJ-PA2D1600X
ERJ-PA2D1601X
ERJ-PA2D1602X
ERJ-PA2D1603X
ERJ-PA2D1620X
ERJ-PA2D1621X
ERJ-PA2D1622X
ERJ-PA2D1623X
ERJ-PA2D1650X
ERJ-PA2D1651X
ERJ-PA2D1652X
ERJ-PA2D1653X
ERJ-PA2D1690X
ERJ-PA2D1691X
ERJ-PA2D1692X
ERJ-PA2D1693X
ERJ-PA2D16R0X
ERJ-PA2D16R2X
ERJ-PA2D16R5X
ERJ-PA2D16R9X
ERJ-PA2D1740X
ERJ-PA2D1741X
ERJ-PA2D1742X
ERJ-PA2D1743X
ERJ-PA2D1780X
ERJ-PA2D1781X
ERJ-PA2D1782X
ERJ-PA2D1783X
ERJ-PA2D17R4X
ERJ-PA2D17R8X
ERJ-PA2D1800X
ERJ-PA2D1801X
ERJ-PA2D1802X
ERJ-PA2D1803X
ERJ-PA2D1820X
ERJ-PA2D1821X

ERJ-PA2D1822X
ERJ-PA2D1823X
ERJ-PA2D1870X
ERJ-PA2D1871X
ERJ-PA2D1872X
ERJ-PA2D1873X
ERJ-PA2D18R0X
ERJ-PA2D18R2X
ERJ-PA2D18R7X
ERJ-PA2D1910X
ERJ-PA2D1911X
ERJ-PA2D1912X
ERJ-PA2D1913X
ERJ-PA2D1960X
ERJ-PA2D1961X
ERJ-PA2D1962X
ERJ-PA2D1963X
ERJ-PA2D19R1X
ERJ-PA2D19R6X
ERJ-PA2D2000X
ERJ-PA2D2001X
ERJ-PA2D2002X
ERJ-PA2D2003X
ERJ-PA2D2050X
ERJ-PA2D2051X
ERJ-PA2D2052X
ERJ-PA2D2053X
ERJ-PA2D20R0X
ERJ-PA2D20R5X
ERJ-PA2D2100X
ERJ-PA2D2101X
ERJ-PA2D2102X
ERJ-PA2D2103X
ERJ-PA2D2150X
ERJ-PA2D2151X
ERJ-PA2D2152X
ERJ-PA2D2153X
ERJ-PA2D21R0X
ERJ-PA2D21R5X
ERJ-PA2D2200X
ERJ-PA2D2201X
ERJ-PA2D2202X
ERJ-PA2D2203X
ERJ-PA2D2210X
ERJ-PA2D2211X
ERJ-PA2D2212X
ERJ-PA2D2213X
ERJ-PA2D2260X
ERJ-PA2D2261X

ERJ-PA2D2262X
ERJ-PA2D2263X
ERJ-PA2D22R0X
ERJ-PA2D22R1X
ERJ-PA2D22R6X
ERJ-PA2D2320X
ERJ-PA2D2321X
ERJ-PA2D2322X
ERJ-PA2D2323X
ERJ-PA2D2370X
ERJ-PA2D2371X
ERJ-PA2D2372X
ERJ-PA2D2373X
ERJ-PA2D23R2X
ERJ-PA2D23R7X
ERJ-PA2D2400X
ERJ-PA2D2401X
ERJ-PA2D2402X
ERJ-PA2D2403X
ERJ-PA2D2430X
ERJ-PA2D2431X
ERJ-PA2D2432X
ERJ-PA2D2433X
ERJ-PA2D2490X
ERJ-PA2D2491X
ERJ-PA2D2492X
ERJ-PA2D2493X
ERJ-PA2D24R0X
ERJ-PA2D24R3X
ERJ-PA2D24R9X
ERJ-PA2D2550X
ERJ-PA2D2551X
ERJ-PA2D2552X
ERJ-PA2D2553X
ERJ-PA2D25R5X
ERJ-PA2D2610X
ERJ-PA2D2611X
ERJ-PA2D2612X
ERJ-PA2D2613X
ERJ-PA2D2670X
ERJ-PA2D2671X
ERJ-PA2D2672X
ERJ-PA2D2673X
ERJ-PA2D26R1X
ERJ-PA2D26R7X
ERJ-PA2D2700X
ERJ-PA2D2701X
ERJ-PA2D2702X
ERJ-PA2D2703X

ERJ-PA2D2740X
ERJ-PA2D2741X
ERJ-PA2D2742X
ERJ-PA2D2743X
ERJ-PA2D27R0X
ERJ-PA2D27R4X
ERJ-PA2D2800X
ERJ-PA2D2801X
ERJ-PA2D2802X
ERJ-PA2D2803X
ERJ-PA2D2870X
ERJ-PA2D2871X
ERJ-PA2D2872X
ERJ-PA2D2873X
ERJ-PA2D28R0X
ERJ-PA2D28R7X
ERJ-PA2D2940X
ERJ-PA2D2941X
ERJ-PA2D2942X
ERJ-PA2D2943X
ERJ-PA2D29R4X
ERJ-PA2D3000X
ERJ-PA2D3001X
ERJ-PA2D3002X
ERJ-PA2D3003X
ERJ-PA2D3010X
ERJ-PA2D3011X
ERJ-PA2D3012X
ERJ-PA2D3013X
ERJ-PA2D3090X
ERJ-PA2D3091X
ERJ-PA2D3092X
ERJ-PA2D3093X
ERJ-PA2D30R0X
ERJ-PA2D30R1X
ERJ-PA2D30R9X
ERJ-PA2D3160X
ERJ-PA2D3161X
ERJ-PA2D3162X
ERJ-PA2D3163X
ERJ-PA2D31R6X
ERJ-PA2D3240X
ERJ-PA2D3241X
ERJ-PA2D3242X
ERJ-PA2D3243X
ERJ-PA2D32R4X
ERJ-PA2D3300X
ERJ-PA2D3301X
ERJ-PA2D3302X

ERJ-PA2D3303X
ERJ-PA2D3320X
ERJ-PA2D3321X
ERJ-PA2D3322X
ERJ-PA2D3323X
ERJ-PA2D33R0X
ERJ-PA2D33R2X
ERJ-PA2D3400X
ERJ-PA2D3401X
ERJ-PA2D3402X
ERJ-PA2D3403X
ERJ-PA2D3480X
ERJ-PA2D3481X
ERJ-PA2D3482X
ERJ-PA2D3483X
ERJ-PA2D34R0X
ERJ-PA2D34R8X
ERJ-PA2D3570X
ERJ-PA2D3571X
ERJ-PA2D3572X
ERJ-PA2D3573X
ERJ-PA2D35R7X
ERJ-PA2D3600X
ERJ-PA2D3601X
ERJ-PA2D3602X
ERJ-PA2D3603X
ERJ-PA2D3650X
ERJ-PA2D3651X
ERJ-PA2D3652X
ERJ-PA2D3653X
ERJ-PA2D36R0X
ERJ-PA2D36R5X
ERJ-PA2D3740X
ERJ-PA2D3741X
ERJ-PA2D3742X
ERJ-PA2D3743X
ERJ-PA2D37R4X
ERJ-PA2D3830X
ERJ-PA2D3831X
ERJ-PA2D3832X
ERJ-PA2D3833X
ERJ-PA2D38R3X
ERJ-PA2D3900X
ERJ-PA2D3901X
ERJ-PA2D3902X
ERJ-PA2D3903X
ERJ-PA2D3920X
ERJ-PA2D3921X
ERJ-PA2D3922X

ERJ-PA2D3923X
ERJ-PA2D39R0X
ERJ-PA2D39R2X
ERJ-PA2D4020X
ERJ-PA2D4021X
ERJ-PA2D4022X
ERJ-PA2D4023X
ERJ-PA2D40R2X
ERJ-PA2D4120X
ERJ-PA2D4121X
ERJ-PA2D4122X
ERJ-PA2D4123X
ERJ-PA2D41R2X
ERJ-PA2D4220X
ERJ-PA2D4221X
ERJ-PA2D4222X
ERJ-PA2D4223X
ERJ-PA2D42R2X
ERJ-PA2D4300X
ERJ-PA2D4301X
ERJ-PA2D4302X
ERJ-PA2D4303X
ERJ-PA2D4320X
ERJ-PA2D4321X
ERJ-PA2D4322X
ERJ-PA2D4323X
ERJ-PA2D43R0X
ERJ-PA2D43R2X
ERJ-PA2D4420X
ERJ-PA2D4421X
ERJ-PA2D4422X
ERJ-PA2D4423X
ERJ-PA2D44R2X
ERJ-PA2D4530X
ERJ-PA2D4531X
ERJ-PA2D4532X
ERJ-PA2D4533X
ERJ-PA2D45R3X
ERJ-PA2D4640X
ERJ-PA2D4641X
ERJ-PA2D4642X
ERJ-PA2D4643X
ERJ-PA2D46R4X
ERJ-PA2D4700X
ERJ-PA2D4701X
ERJ-PA2D4702X
ERJ-PA2D4703X
ERJ-PA2D4750X
ERJ-PA2D4751X

ERJ-PA2D4752X
ERJ-PA2D4753X
ERJ-PA2D47R0X
ERJ-PA2D47R5X
ERJ-PA2D4870X
ERJ-PA2D4871X
ERJ-PA2D4872X
ERJ-PA2D4873X
ERJ-PA2D48R7X
ERJ-PA2D4990X
ERJ-PA2D4991X
ERJ-PA2D4992X
ERJ-PA2D4993X
ERJ-PA2D49R9X
ERJ-PA2D5100X
ERJ-PA2D5101X
ERJ-PA2D5102X
ERJ-PA2D5103X
ERJ-PA2D5110X
ERJ-PA2D5111X
ERJ-PA2D5112X
ERJ-PA2D5113X
ERJ-PA2D51R0X
ERJ-PA2D51R1X
ERJ-PA2D5230X
ERJ-PA2D5231X
ERJ-PA2D5232X
ERJ-PA2D5233X
ERJ-PA2D52R3X
ERJ-PA2D5360X
ERJ-PA2D5361X
ERJ-PA2D5362X
ERJ-PA2D5363X
ERJ-PA2D53R6X
ERJ-PA2D5490X
ERJ-PA2D5491X
ERJ-PA2D5492X
ERJ-PA2D5493X
ERJ-PA2D54R9X
ERJ-PA2D5600X
ERJ-PA2D5601X
ERJ-PA2D5602X
ERJ-PA2D5603X
ERJ-PA2D5620X
ERJ-PA2D5621X
ERJ-PA2D5622X
ERJ-PA2D5623X
ERJ-PA2D56R0X
ERJ-PA2D56R2X

ERJ-PA2D5760X
ERJ-PA2D5761X
ERJ-PA2D5762X
ERJ-PA2D5763X
ERJ-PA2D57R6X
ERJ-PA2D5900X
ERJ-PA2D5901X
ERJ-PA2D5902X
ERJ-PA2D5903X
ERJ-PA2D59R0X
ERJ-PA2D6040X
ERJ-PA2D6041X
ERJ-PA2D6042X
ERJ-PA2D6043X
ERJ-PA2D60R4X
ERJ-PA2D6190X
ERJ-PA2D6191X
ERJ-PA2D6192X
ERJ-PA2D6193X
ERJ-PA2D61R9X
ERJ-PA2D6200X
ERJ-PA2D6201X
ERJ-PA2D6202X
ERJ-PA2D6203X
ERJ-PA2D62R0X
ERJ-PA2D6340X
ERJ-PA2D6341X
ERJ-PA2D6342X
ERJ-PA2D6343X
ERJ-PA2D63R4X
ERJ-PA2D6490X
ERJ-PA2D6491X
ERJ-PA2D6492X
ERJ-PA2D6493X
ERJ-PA2D64R9X
ERJ-PA2D6650X
ERJ-PA2D6651X
ERJ-PA2D6652X
ERJ-PA2D6653X
ERJ-PA2D66R5X
ERJ-PA2D6800X
ERJ-PA2D6801X
ERJ-PA2D6802X
ERJ-PA2D6803X
ERJ-PA2D6810X
ERJ-PA2D6811X
ERJ-PA2D6812X
ERJ-PA2D6813X
ERJ-PA2D68R0X

ERJ-PA2D68R1X
ERJ-PA2D6980X
ERJ-PA2D6981X
ERJ-PA2D6982X
ERJ-PA2D6983X
ERJ-PA2D69R8X
ERJ-PA2D7150X
ERJ-PA2D7151X
ERJ-PA2D7152X
ERJ-PA2D7153X
ERJ-PA2D71R5X
ERJ-PA2D7320X
ERJ-PA2D7321X
ERJ-PA2D7322X
ERJ-PA2D7323X
ERJ-PA2D73R2X
ERJ-PA2D7500X
ERJ-PA2D7501X
ERJ-PA2D7502X
ERJ-PA2D7503X
ERJ-PA2D75R0X
ERJ-PA2D7680X
ERJ-PA2D7681X
ERJ-PA2D7682X
ERJ-PA2D7683X
ERJ-PA2D76R8X
ERJ-PA2D7870X
ERJ-PA2D7871X
ERJ-PA2D7872X
ERJ-PA2D7873X
ERJ-PA2D78R7X
ERJ-PA2D8060X
ERJ-PA2D8061X
ERJ-PA2D8062X
ERJ-PA2D8063X
ERJ-PA2D80R6X
ERJ-PA2D8200X
ERJ-PA2D8201X
ERJ-PA2D8202X
ERJ-PA2D8203X
ERJ-PA2D8250X
ERJ-PA2D8251X
ERJ-PA2D8252X
ERJ-PA2D8253X
ERJ-PA2D82R0X
ERJ-PA2D82R5X
ERJ-PA2D8450X
ERJ-PA2D8451X
ERJ-PA2D8452X

ERJ-PA2D8453X
ERJ-PA2D84R5X
ERJ-PA2D8660X
ERJ-PA2D8661X
ERJ-PA2D8662X
ERJ-PA2D8663X
ERJ-PA2D86R6X
ERJ-PA2D8870X
ERJ-PA2D8871X
ERJ-PA2D8872X
ERJ-PA2D8873X
ERJ-PA2D88R7X
ERJ-PA2D9090X
ERJ-PA2D9091X
ERJ-PA2D9092X
ERJ-PA2D9093X
ERJ-PA2D90R9X
ERJ-PA2D9100X
ERJ-PA2D9101X
ERJ-PA2D9102X
ERJ-PA2D9103X
ERJ-PA2D91R0X
ERJ-PA2D9310X
ERJ-PA2D9311X
ERJ-PA2D9312X
ERJ-PA2D9313X
ERJ-PA2D93R1X
ERJ-PA2D9530X
ERJ-PA2D9531X
ERJ-PA2D9532X
ERJ-PA2D9533X
ERJ-PA2D95R3X
ERJ-PA2D9760X
ERJ-PA2D9761X
ERJ-PA2D9762X
ERJ-PA2D9763X
ERJ-PA2D97R6X
ERJ-PA2F1000X
ERJ-PA2F1001X
ERJ-PA2F1002X
ERJ-PA2F1003X
ERJ-PA2F1004X
ERJ-PA2F1020X
ERJ-PA2F1021X
ERJ-PA2F1022X
ERJ-PA2F1023X
ERJ-PA2F1050X
ERJ-PA2F1051X
ERJ-PA2F1052X

ERJ-PA2F1053X
ERJ-PA2F1070X
ERJ-PA2F1071X
ERJ-PA2F1072X
ERJ-PA2F1073X
ERJ-PA2F10R0X
ERJ-PA2F10R2X
ERJ-PA2F10R5X
ERJ-PA2F10R7X
ERJ-PA2F1100X
ERJ-PA2F1101X
ERJ-PA2F1102X
ERJ-PA2F1103X
ERJ-PA2F1130X
ERJ-PA2F1131X
ERJ-PA2F1132X
ERJ-PA2F1133X
ERJ-PA2F1150X
ERJ-PA2F1151X
ERJ-PA2F1152X
ERJ-PA2F1153X
ERJ-PA2F1180X
ERJ-PA2F1181X
ERJ-PA2F1182X
ERJ-PA2F1183X
ERJ-PA2F11R0X
ERJ-PA2F11R3X
ERJ-PA2F11R5X
ERJ-PA2F11R8X
ERJ-PA2F1200X
ERJ-PA2F1201X
ERJ-PA2F1202X
ERJ-PA2F1203X
ERJ-PA2F1210X
ERJ-PA2F1211X
ERJ-PA2F1212X
ERJ-PA2F1213X
ERJ-PA2F1240X
ERJ-PA2F1241X
ERJ-PA2F1242X
ERJ-PA2F1243X
ERJ-PA2F1270X
ERJ-PA2F1271X
ERJ-PA2F1272X
ERJ-PA2F1273X
ERJ-PA2F12R0X
ERJ-PA2F12R1X
ERJ-PA2F12R4X
ERJ-PA2F12R7X

ERJ-PA2F1300X
ERJ-PA2F1301X
ERJ-PA2F1302X
ERJ-PA2F1303X
ERJ-PA2F1330X
ERJ-PA2F1331X
ERJ-PA2F1332X
ERJ-PA2F1333X
ERJ-PA2F1370X
ERJ-PA2F1371X
ERJ-PA2F1372X
ERJ-PA2F1373X
ERJ-PA2F13R0X
ERJ-PA2F13R3X
ERJ-PA2F13R7X
ERJ-PA2F1400X
ERJ-PA2F1401X
ERJ-PA2F1402X
ERJ-PA2F1403X
ERJ-PA2F1430X
ERJ-PA2F1431X
ERJ-PA2F1432X
ERJ-PA2F1433X
ERJ-PA2F1470X
ERJ-PA2F1471X
ERJ-PA2F1472X
ERJ-PA2F1473X
ERJ-PA2F14R0X
ERJ-PA2F14R3X
ERJ-PA2F14R7X
ERJ-PA2F1500X
ERJ-PA2F1501X
ERJ-PA2F1502X
ERJ-PA2F1503X
ERJ-PA2F1540X
ERJ-PA2F1541X
ERJ-PA2F1542X
ERJ-PA2F1543X
ERJ-PA2F1580X
ERJ-PA2F1581X
ERJ-PA2F1582X
ERJ-PA2F1583X
ERJ-PA2F15R0X
ERJ-PA2F15R4X
ERJ-PA2F15R8X
ERJ-PA2F1600X
ERJ-PA2F1601X
ERJ-PA2F1602X
ERJ-PA2F1603X

ERJ-PA2F1620X
ERJ-PA2F1621X
ERJ-PA2F1622X
ERJ-PA2F1623X
ERJ-PA2F1650X
ERJ-PA2F1651X
ERJ-PA2F1652X
ERJ-PA2F1653X
ERJ-PA2F1690X
ERJ-PA2F1691X
ERJ-PA2F1692X
ERJ-PA2F1693X
ERJ-PA2F16R0X
ERJ-PA2F16R2X
ERJ-PA2F16R5X
ERJ-PA2F16R9X
ERJ-PA2F1740X
ERJ-PA2F1741X
ERJ-PA2F1742X
ERJ-PA2F1743X
ERJ-PA2F1780X
ERJ-PA2F1781X
ERJ-PA2F1782X
ERJ-PA2F1783X
ERJ-PA2F17R4X
ERJ-PA2F17R8X
ERJ-PA2F1800X
ERJ-PA2F1801X
ERJ-PA2F1802X
ERJ-PA2F1803X
ERJ-PA2F1820X
ERJ-PA2F1821X
ERJ-PA2F1822X
ERJ-PA2F1823X
ERJ-PA2F1870X
ERJ-PA2F1871X
ERJ-PA2F1872X
ERJ-PA2F1873X
ERJ-PA2F18R0X
ERJ-PA2F18R2X
ERJ-PA2F18R7X
ERJ-PA2F1910X
ERJ-PA2F1911X
ERJ-PA2F1912X
ERJ-PA2F1913X
ERJ-PA2F1960X
ERJ-PA2F1961X
ERJ-PA2F1962X
ERJ-PA2F1963X

ERJ-PA2F19R1X
ERJ-PA2F19R6X
ERJ-PA2F2000X
ERJ-PA2F2001X
ERJ-PA2F2002X
ERJ-PA2F2003X
ERJ-PA2F2050X
ERJ-PA2F2051X
ERJ-PA2F2052X
ERJ-PA2F2053X
ERJ-PA2F20R0X
ERJ-PA2F20R5X
ERJ-PA2F2100X
ERJ-PA2F2101X
ERJ-PA2F2102X
ERJ-PA2F2103X
ERJ-PA2F2150X
ERJ-PA2F2151X
ERJ-PA2F2152X
ERJ-PA2F2153X
ERJ-PA2F21R0X
ERJ-PA2F21R5X
ERJ-PA2F2200X
ERJ-PA2F2201X
ERJ-PA2F2202X
ERJ-PA2F2203X
ERJ-PA2F2210X
ERJ-PA2F2211X
ERJ-PA2F2212X
ERJ-PA2F2213X
ERJ-PA2F2260X
ERJ-PA2F2261X
ERJ-PA2F2262X
ERJ-PA2F2263X
ERJ-PA2F22R0X
ERJ-PA2F22R1X
ERJ-PA2F22R6X
ERJ-PA2F2320X
ERJ-PA2F2321X
ERJ-PA2F2322X
ERJ-PA2F2323X
ERJ-PA2F2370X
ERJ-PA2F2371X
ERJ-PA2F2372X
ERJ-PA2F2373X
ERJ-PA2F23R2X
ERJ-PA2F23R7X
ERJ-PA2F2400X
ERJ-PA2F2401X

ERJ-PA2F2402X
ERJ-PA2F2403X
ERJ-PA2F2430X
ERJ-PA2F2431X
ERJ-PA2F2432X
ERJ-PA2F2433X
ERJ-PA2F2490X
ERJ-PA2F2491X
ERJ-PA2F2492X
ERJ-PA2F2493X
ERJ-PA2F24R0X
ERJ-PA2F24R3X
ERJ-PA2F24R9X
ERJ-PA2F2550X
ERJ-PA2F2551X
ERJ-PA2F2552X
ERJ-PA2F2553X
ERJ-PA2F25R5X
ERJ-PA2F2610X
ERJ-PA2F2611X
ERJ-PA2F2612X
ERJ-PA2F2613X
ERJ-PA2F2670X
ERJ-PA2F2671X
ERJ-PA2F2672X
ERJ-PA2F2673X
ERJ-PA2F26R1X
ERJ-PA2F26R7X
ERJ-PA2F2700X
ERJ-PA2F2701X
ERJ-PA2F2702X
ERJ-PA2F2703X
ERJ-PA2F2740X
ERJ-PA2F2741X
ERJ-PA2F2742X
ERJ-PA2F2743X
ERJ-PA2F27R0X
ERJ-PA2F27R4X
ERJ-PA2F2800X
ERJ-PA2F2801X
ERJ-PA2F2802X
ERJ-PA2F2803X
ERJ-PA2F2870X
ERJ-PA2F2871X
ERJ-PA2F2872X
ERJ-PA2F2873X
ERJ-PA2F28R0X
ERJ-PA2F28R7X
ERJ-PA2F2940X

ERJ-PA2F2941X
ERJ-PA2F2942X
ERJ-PA2F2943X
ERJ-PA2F29R4X
ERJ-PA2F3000X
ERJ-PA2F3001X
ERJ-PA2F3002X
ERJ-PA2F3003X
ERJ-PA2F3010X
ERJ-PA2F3011X
ERJ-PA2F3012X
ERJ-PA2F3013X
ERJ-PA2F3090X
ERJ-PA2F3091X
ERJ-PA2F3092X
ERJ-PA2F3093X
ERJ-PA2F30R0X
ERJ-PA2F30R1X
ERJ-PA2F30R9X
ERJ-PA2F3160X
ERJ-PA2F3161X
ERJ-PA2F3162X
ERJ-PA2F3163X
ERJ-PA2F31R6X
ERJ-PA2F3240X
ERJ-PA2F3241X
ERJ-PA2F3242X
ERJ-PA2F3243X
ERJ-PA2F32R4X
ERJ-PA2F3300X
ERJ-PA2F3301X
ERJ-PA2F3302X
ERJ-PA2F3303X
ERJ-PA2F3320X
ERJ-PA2F3321X
ERJ-PA2F3322X
ERJ-PA2F3323X
ERJ-PA2F33R0X
ERJ-PA2F33R2X
ERJ-PA2F3400X
ERJ-PA2F3401X
ERJ-PA2F3402X
ERJ-PA2F3403X
ERJ-PA2F3480X
ERJ-PA2F3481X
ERJ-PA2F3482X
ERJ-PA2F3483X
ERJ-PA2F34R0X
ERJ-PA2F34R8X

ERJ-PA2F3570X
ERJ-PA2F3571X
ERJ-PA2F3572X
ERJ-PA2F3573X
ERJ-PA2F35R7X
ERJ-PA2F3600X
ERJ-PA2F3601X
ERJ-PA2F3602X
ERJ-PA2F3603X
ERJ-PA2F3650X
ERJ-PA2F3651X
ERJ-PA2F3652X
ERJ-PA2F3653X
ERJ-PA2F36R0X
ERJ-PA2F36R5X
ERJ-PA2F3740X
ERJ-PA2F3741X
ERJ-PA2F3742X
ERJ-PA2F3743X
ERJ-PA2F37R4X
ERJ-PA2F3830X
ERJ-PA2F3831X
ERJ-PA2F3832X
ERJ-PA2F3833X
ERJ-PA2F38R3X
ERJ-PA2F3900X
ERJ-PA2F3901X
ERJ-PA2F3902X
ERJ-PA2F3903X
ERJ-PA2F3920X
ERJ-PA2F3921X
ERJ-PA2F3922X
ERJ-PA2F3923X
ERJ-PA2F39R0X
ERJ-PA2F39R2X
ERJ-PA2F4020X
ERJ-PA2F4021X
ERJ-PA2F4022X
ERJ-PA2F4023X
ERJ-PA2F40R2X
ERJ-PA2F4120X
ERJ-PA2F4121X
ERJ-PA2F4122X
ERJ-PA2F4123X
ERJ-PA2F41R2X
ERJ-PA2F4220X
ERJ-PA2F4221X
ERJ-PA2F4222X
ERJ-PA2F4223X

ERJ-PA2F42R2X
ERJ-PA2F4300X
ERJ-PA2F4301X
ERJ-PA2F4302X
ERJ-PA2F4303X
ERJ-PA2F4320X
ERJ-PA2F4321X
ERJ-PA2F4322X
ERJ-PA2F4323X
ERJ-PA2F43R0X
ERJ-PA2F43R2X
ERJ-PA2F4420X
ERJ-PA2F4421X
ERJ-PA2F4422X
ERJ-PA2F4423X
ERJ-PA2F44R2X
ERJ-PA2F4530X
ERJ-PA2F4531X
ERJ-PA2F4532X
ERJ-PA2F4533X
ERJ-PA2F45R3X
ERJ-PA2F4640X
ERJ-PA2F4641X
ERJ-PA2F4642X
ERJ-PA2F4643X
ERJ-PA2F46R4X
ERJ-PA2F4700X
ERJ-PA2F4701X
ERJ-PA2F4702X
ERJ-PA2F4703X
ERJ-PA2F4750X
ERJ-PA2F4751X
ERJ-PA2F4752X
ERJ-PA2F4753X
ERJ-PA2F47R0X
ERJ-PA2F47R5X
ERJ-PA2F4870X
ERJ-PA2F4871X
ERJ-PA2F4872X
ERJ-PA2F4873X
ERJ-PA2F48R7X
ERJ-PA2F4990X
ERJ-PA2F4991X
ERJ-PA2F4992X
ERJ-PA2F4993X
ERJ-PA2F49R9X
ERJ-PA2F5100X
ERJ-PA2F5101X
ERJ-PA2F5102X

ERJ-PA2F5103X
ERJ-PA2F5110X
ERJ-PA2F5111X
ERJ-PA2F5112X
ERJ-PA2F5113X
ERJ-PA2F51R0X
ERJ-PA2F51R1X
ERJ-PA2F5230X
ERJ-PA2F5231X
ERJ-PA2F5232X
ERJ-PA2F5233X
ERJ-PA2F52R3X
ERJ-PA2F5360X
ERJ-PA2F5361X
ERJ-PA2F5362X
ERJ-PA2F5363X
ERJ-PA2F53R6X
ERJ-PA2F5490X
ERJ-PA2F5491X
ERJ-PA2F5492X
ERJ-PA2F5493X
ERJ-PA2F54R9X
ERJ-PA2F5600X
ERJ-PA2F5601X
ERJ-PA2F5602X
ERJ-PA2F5603X
ERJ-PA2F5620X
ERJ-PA2F5621X
ERJ-PA2F5622X
ERJ-PA2F5623X
ERJ-PA2F56R0X
ERJ-PA2F56R2X
ERJ-PA2F5760X
ERJ-PA2F5761X
ERJ-PA2F5762X
ERJ-PA2F5763X
ERJ-PA2F57R6X
ERJ-PA2F5900X
ERJ-PA2F5901X
ERJ-PA2F5902X
ERJ-PA2F5903X
ERJ-PA2F59R0X
ERJ-PA2F6040X
ERJ-PA2F6041X
ERJ-PA2F6042X
ERJ-PA2F6043X
ERJ-PA2F60R4X
ERJ-PA2F6190X
ERJ-PA2F6191X

ERJ-PA2F6192X
ERJ-PA2F6193X
ERJ-PA2F61R9X
ERJ-PA2F6200X
ERJ-PA2F6201X
ERJ-PA2F6202X
ERJ-PA2F6203X
ERJ-PA2F62R0X
ERJ-PA2F6340X
ERJ-PA2F6341X
ERJ-PA2F6342X
ERJ-PA2F6343X
ERJ-PA2F63R4X
ERJ-PA2F6490X
ERJ-PA2F6491X
ERJ-PA2F6492X
ERJ-PA2F6493X
ERJ-PA2F64R9X
ERJ-PA2F6650X
ERJ-PA2F6651X
ERJ-PA2F6652X
ERJ-PA2F6653X
ERJ-PA2F66R5X
ERJ-PA2F6800X
ERJ-PA2F6801X
ERJ-PA2F6802X
ERJ-PA2F6803X
ERJ-PA2F6810X
ERJ-PA2F6811X
ERJ-PA2F6812X
ERJ-PA2F6813X
ERJ-PA2F68R0X
ERJ-PA2F68R1X
ERJ-PA2F6980X
ERJ-PA2F6981X
ERJ-PA2F6982X
ERJ-PA2F6983X
ERJ-PA2F69R8X
ERJ-PA2F7150X
ERJ-PA2F7151X
ERJ-PA2F7152X
ERJ-PA2F7153X
ERJ-PA2F71R5X
ERJ-PA2F7320X
ERJ-PA2F7321X
ERJ-PA2F7322X
ERJ-PA2F7323X
ERJ-PA2F73R2X
ERJ-PA2F7500X

ERJ-PA2F7501X
ERJ-PA2F7502X
ERJ-PA2F7503X
ERJ-PA2F75R0X
ERJ-PA2F7680X
ERJ-PA2F7681X
ERJ-PA2F7682X
ERJ-PA2F7683X
ERJ-PA2F76R8X
ERJ-PA2F7870X
ERJ-PA2F7871X
ERJ-PA2F7872X
ERJ-PA2F7873X
ERJ-PA2F78R7X
ERJ-PA2F8060X
ERJ-PA2F8061X
ERJ-PA2F8062X
ERJ-PA2F8063X
ERJ-PA2F80R6X
ERJ-PA2F8200X
ERJ-PA2F8201X
ERJ-PA2F8202X
ERJ-PA2F8203X
ERJ-PA2F8250X
ERJ-PA2F8251X
ERJ-PA2F8252X
ERJ-PA2F8253X
ERJ-PA2F82R0X
ERJ-PA2F82R5X
ERJ-PA2F8450X
ERJ-PA2F8451X
ERJ-PA2F8452X
ERJ-PA2F8453X
ERJ-PA2F84R5X
ERJ-PA2F8660X
ERJ-PA2F8661X
ERJ-PA2F8662X
ERJ-PA2F8663X
ERJ-PA2F86R6X
ERJ-PA2F8870X
ERJ-PA2F8871X
ERJ-PA2F8872X
ERJ-PA2F8873X
ERJ-PA2F88R7X
ERJ-PA2F9090X
ERJ-PA2F9091X
ERJ-PA2F9092X
ERJ-PA2F9093X
ERJ-PA2F90R9X

ERJ-PA2F9100X
ERJ-PA2F9101X
ERJ-PA2F9102X
ERJ-PA2F9103X
ERJ-PA2F91R0X
ERJ-PA2F9310X
ERJ-PA2F9311X
ERJ-PA2F9312X
ERJ-PA2F9313X
ERJ-PA2F93R1X
ERJ-PA2F9530X
ERJ-PA2F9531X
ERJ-PA2F9532X
ERJ-PA2F9533X
ERJ-PA2F95R3X
ERJ-PA2F9760X
ERJ-PA2F9761X
ERJ-PA2F9762X
ERJ-PA2F9763X
ERJ-PA2F97R6X
ERJ-PA2J100X
ERJ-PA2J101X
ERJ-PA2J102X
ERJ-PA2J103X
ERJ-PA2J104X
ERJ-PA2J105X
ERJ-PA2J110X
ERJ-PA2J111X
ERJ-PA2J112X
ERJ-PA2J113X
ERJ-PA2J114X
ERJ-PA2J120X
ERJ-PA2J121X
ERJ-PA2J122X
ERJ-PA2J123X
ERJ-PA2J124X
ERJ-PA2J130X
ERJ-PA2J131X
ERJ-PA2J132X
ERJ-PA2J133X
ERJ-PA2J134X
ERJ-PA2J150X
ERJ-PA2J151X
ERJ-PA2J152X
ERJ-PA2J153X
ERJ-PA2J154X
ERJ-PA2J160X
ERJ-PA2J161X
ERJ-PA2J162X

ERJ-PA2J163X
ERJ-PA2J164X
ERJ-PA2J180X
ERJ-PA2J181X
ERJ-PA2J182X
ERJ-PA2J183X
ERJ-PA2J184X
ERJ-PA2J200X
ERJ-PA2J201X
ERJ-PA2J202X
ERJ-PA2J203X
ERJ-PA2J204X
ERJ-PA2J220X
ERJ-PA2J221X
ERJ-PA2J222X
ERJ-PA2J223X
ERJ-PA2J224X
ERJ-PA2J240X
ERJ-PA2J241X
ERJ-PA2J242X
ERJ-PA2J243X
ERJ-PA2J244X
ERJ-PA2J270X
ERJ-PA2J271X
ERJ-PA2J272X
ERJ-PA2J273X
ERJ-PA2J274X
ERJ-PA2J300X
ERJ-PA2J301X
ERJ-PA2J302X
ERJ-PA2J303X
ERJ-PA2J304X
ERJ-PA2J330X
ERJ-PA2J331X
ERJ-PA2J332X
ERJ-PA2J333X
ERJ-PA2J334X
ERJ-PA2J360X
ERJ-PA2J361X
ERJ-PA2J362X
ERJ-PA2J363X
ERJ-PA2J364X
ERJ-PA2J390X
ERJ-PA2J391X
ERJ-PA2J392X
ERJ-PA2J393X
ERJ-PA2J394X
ERJ-PA2J430X
ERJ-PA2J431X

ERJ-PA2J432X
ERJ-PA2J433X
ERJ-PA2J434X
ERJ-PA2J470X
ERJ-PA2J471X
ERJ-PA2J472X
ERJ-PA2J473X
ERJ-PA2J474X
ERJ-PA2J510X
ERJ-PA2J511X
ERJ-PA2J512X
ERJ-PA2J513X
ERJ-PA2J514X
ERJ-PA2J560X
ERJ-PA2J561X
ERJ-PA2J562X
ERJ-PA2J563X
ERJ-PA2J564X
ERJ-PA2J620X
ERJ-PA2J621X
ERJ-PA2J622X
ERJ-PA2J623X
ERJ-PA2J624X
ERJ-PA2J680X
ERJ-PA2J681X
ERJ-PA2J682X
ERJ-PA2J683X
ERJ-PA2J684X
ERJ-PA2J750X
ERJ-PA2J751X
ERJ-PA2J752X
ERJ-PA2J753X
ERJ-PA2J754X
ERJ-PA2J820X
ERJ-PA2J821X
ERJ-PA2J822X
ERJ-PA2J823X
ERJ-PA2J824X
ERJ-PA2J910X
ERJ-PA2J911X
ERJ-PA2J912X
ERJ-PA2J913X
ERJ-PA2J914X