

## Product Change Notice

PCN#: EE-PCN18009

03/07/2018

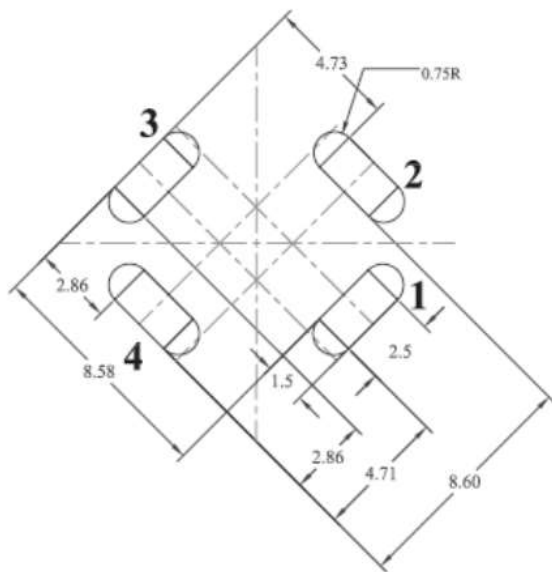
### CLASSIFICATION OF CHANGE:

Documentation

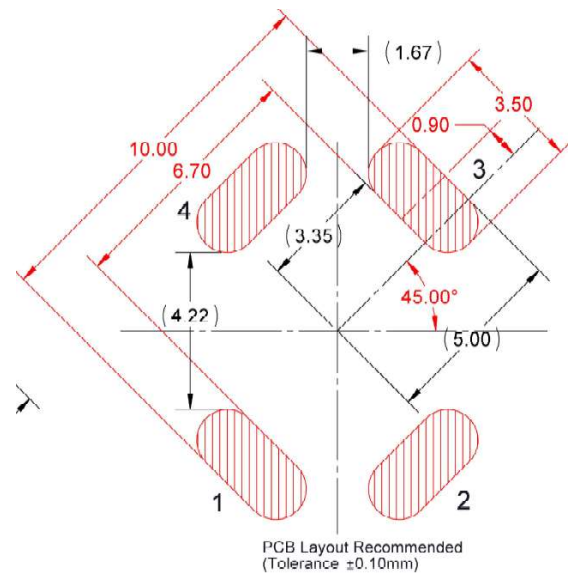
### DESCRIPTION OF CHANGE:

Increase pad dimension size of the recommended pad layout.

Current Pad Layout



New Pad Layout



### REASON FOR CHANGE:

To improve accuracy in placing component on the pad area.

### EXPECTED INFLUENCE ON QUALITY, RELIABILITY, AND PERFORMANCE:

There will be no effect on the quality, reliability, or performance. There are no changes to form, fit, and function of the devices.

### PARTS FAMILIES AFFECTED:

CMS1-1-R	CMS1-5-R	CMS1-9-R	CMS1-13-R
CMS1-2-R	CMS1-6-R	CMS1-10-R	CMS1-14-R
CMS1-3-R	CMS1-7-R	CMS1-11-R	
CMS1-4-R	CMS1-8-R	CMS1-12-R	

### TIME SCHEDULE:

Start Shipment Date: N/A

Last Time Buy Date: N/A

Last Time Shipment Date: N/A

**ISSUED BY:**

Global Product Manager: Subiry Steve

**CONTACT INFORMATION:**

For questions or comments, please contact your local [Eaton sales representative](#).